

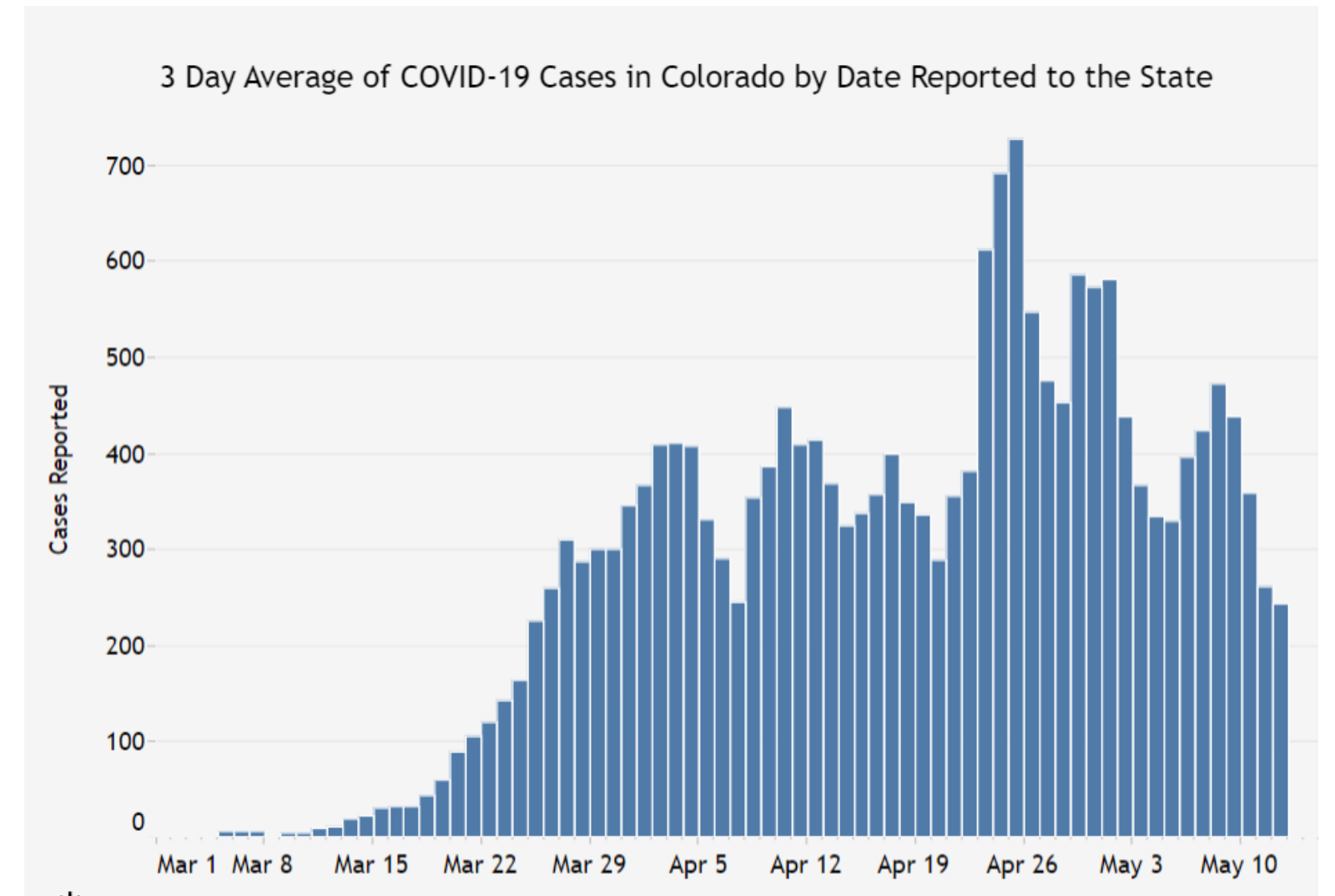
# COVID-19 Updates

## Colorado Department of Health Care Policy & Financing

May 14, 2020

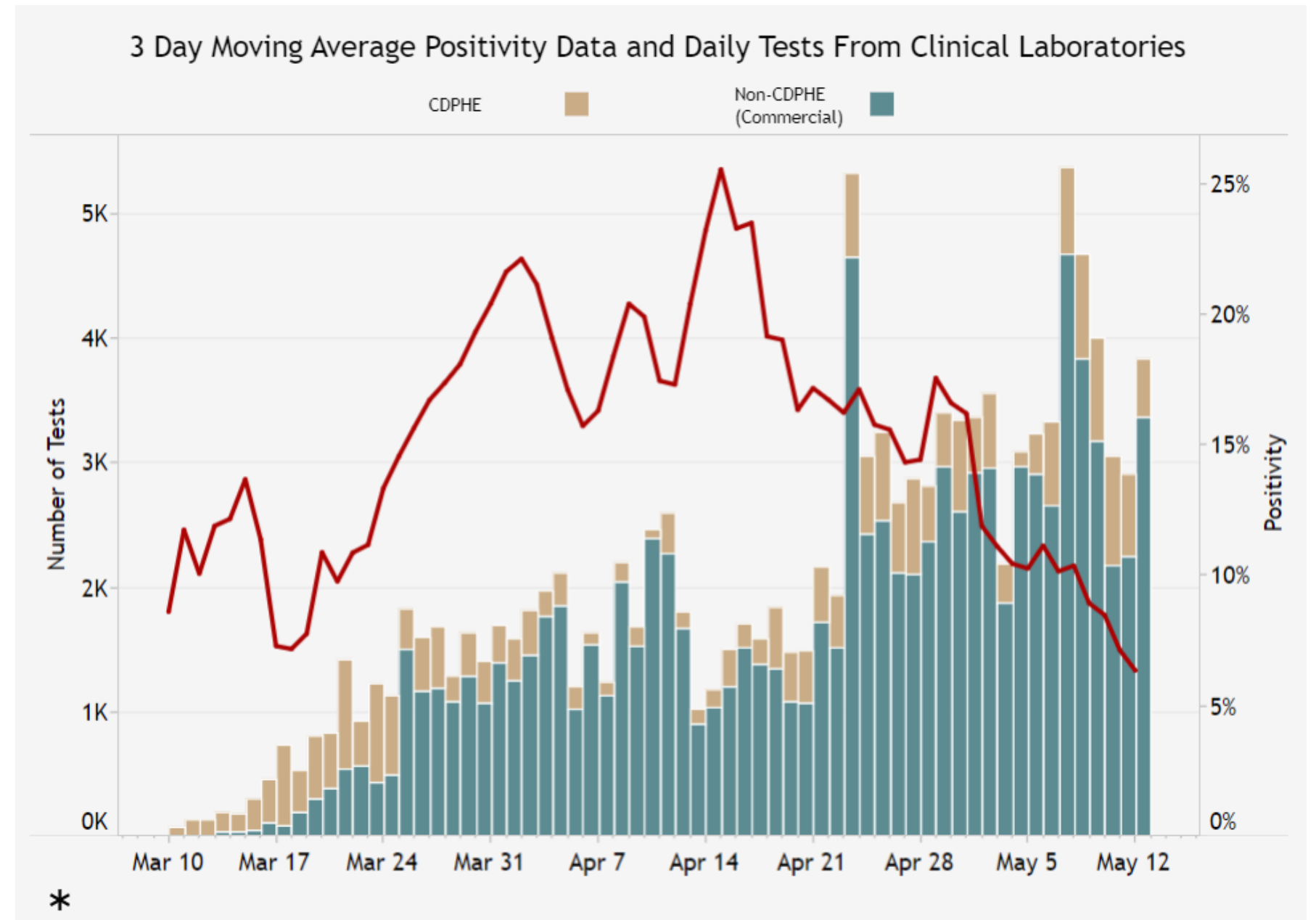
# COVID-19 in Colorado

- 20,475 cases
- 3,735 hospitalized
- 1,062 deaths
- 60 counties
- 206 outbreaks
  
- US: 1.3M
- Worldwide: 4.3M cases



# Testing

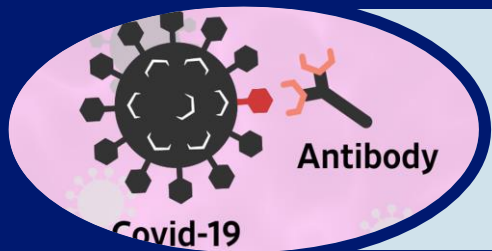
- Increasing availability
- Still mainly limited to those with symptoms
- Next phase - more widespread testing with contact tracing



# Testing Strategies



PCR



Antibody Tests



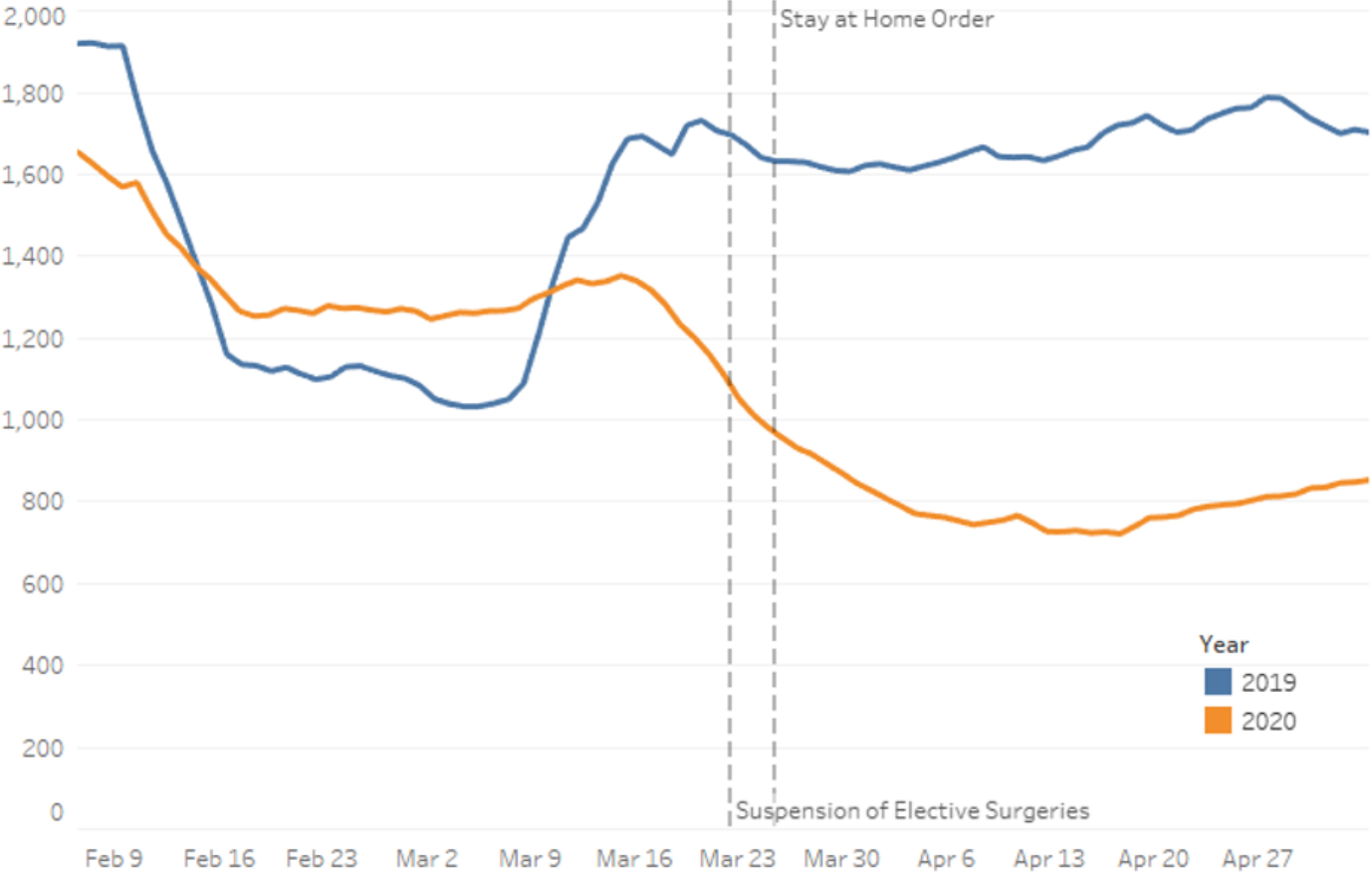
New Rapid Tests - Saliva

# Treatment

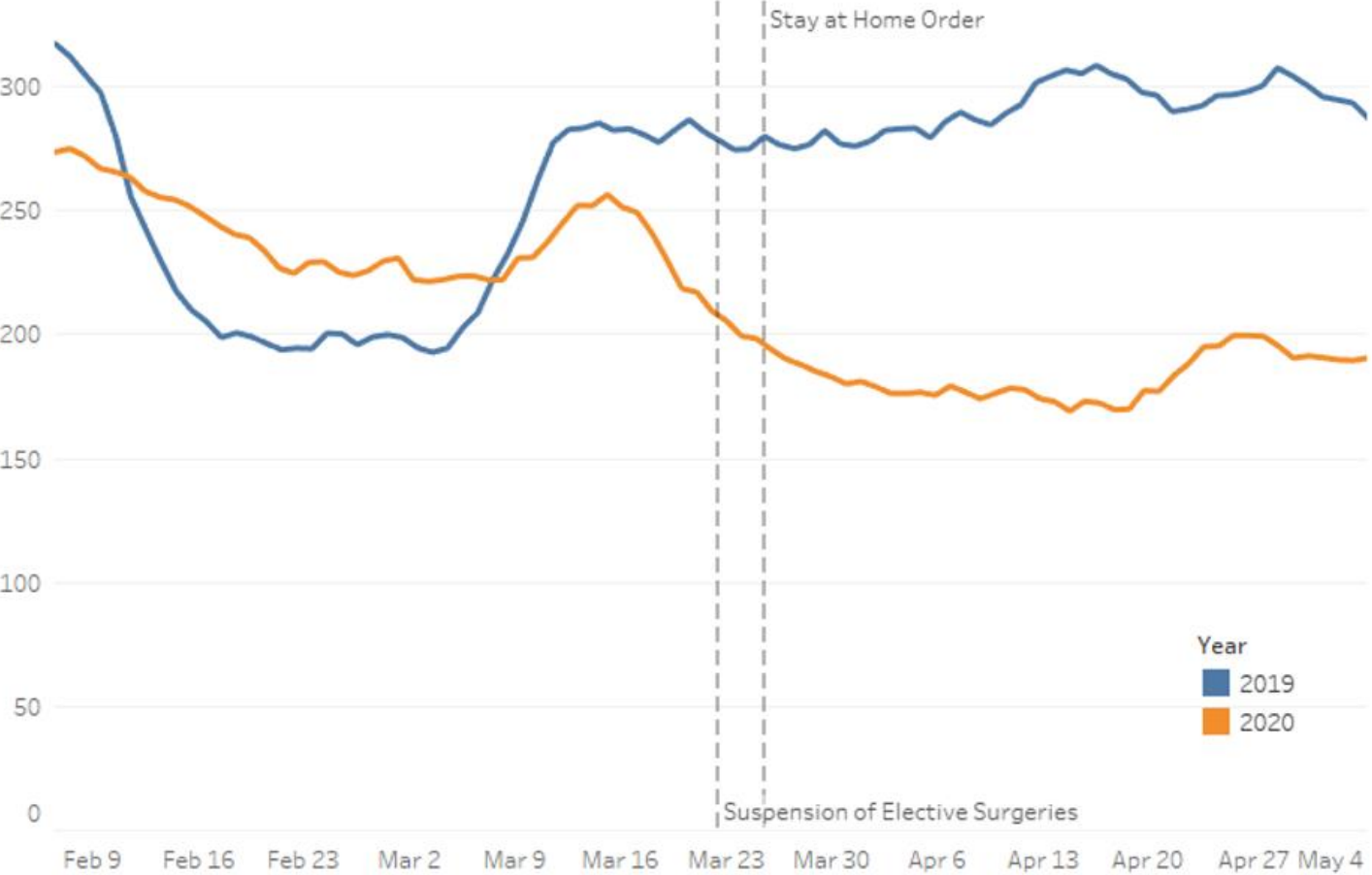
- Hydroxychloroquine- no benefit shown
- Remdesivir - shortened median time to recovery and lower mortality rate than placebo individuals getting drug
- Some promising vaccines in phase II trials

# ADT DATA - ED and Inpt

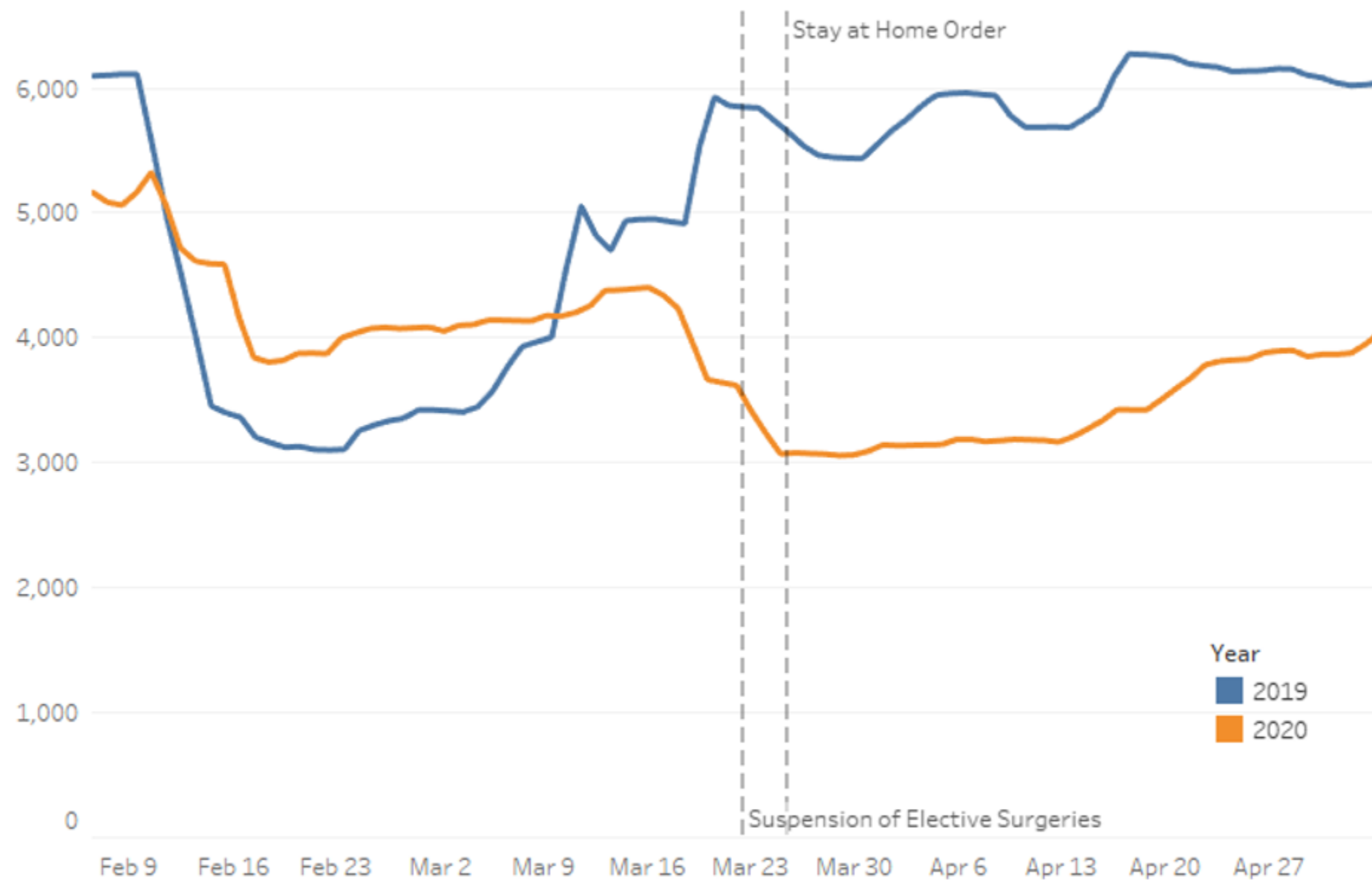
Emergency - # of Visits (7 day moving average)



Inpatient - # of Visits (7 day moving average)



Outpatient - # of Visits (7 day moving average)



# ADT Data Outpatient

# HCPF Activities Over Past Month

- Finalizing waiver plans (1115/1135)
- Telemedicine refinements
- Provider sustainability
- Residential Strike Force
- Member operations and preparations for surge
- BUDGET, BUDGET, BUDGET



# Updated Medicaid, CHP+ Membership Surge Forecast

Membership surge of about **563,000 Coloradans** between April 1 and December 31, reflecting a 44% increase to the 1.3M members covered in **Medicaid and CHP+** as of March 2020. (OSPБ adjusted assumed Emergency period)

- The maintenance of effort ends with the public emergency period (now presumed 12/31/2020). We project an **estimated disenrollment of 332,000** members who do not meet eligibility criteria 12/31/2020.
- **Net surge of 368,000** members, **29% increase, FY 2020-21** compared to March 2020.

