

Key Performance Indicators

Presented by: Matt Lanphier



COLORADO

Department of Health Care
Policy & Financing

Key Performance Indicators

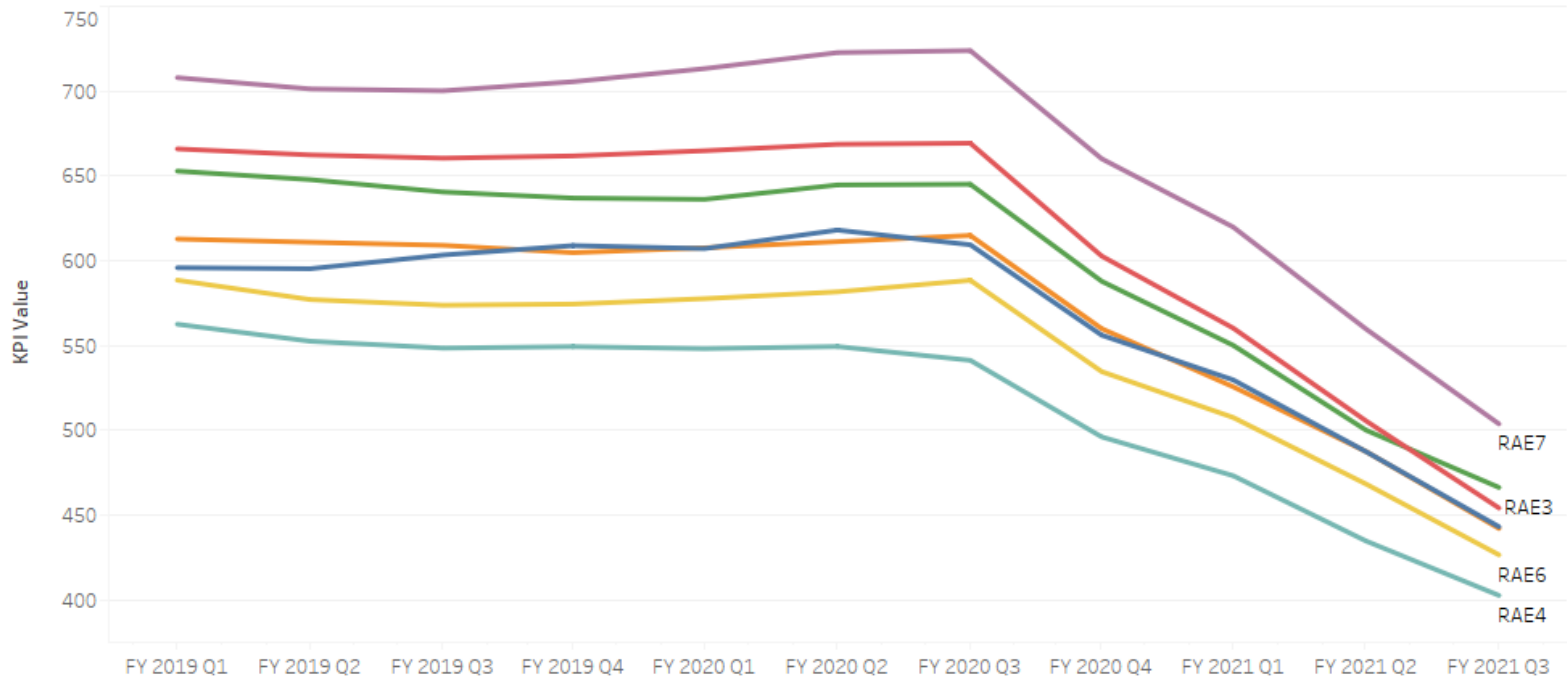
1. Emergency Department Visits PKPY (Risk Adjusted)
2. Behavioral Health Engagement
3. Dental Visits
4. Well Visits
5. Prenatal Engagement
6. Health Neighborhood (Composite Measure)



COLORADO

Department of Health Care
Policy & Financing

Risk Adjusted ED Visits PKPY KPI Time Trend

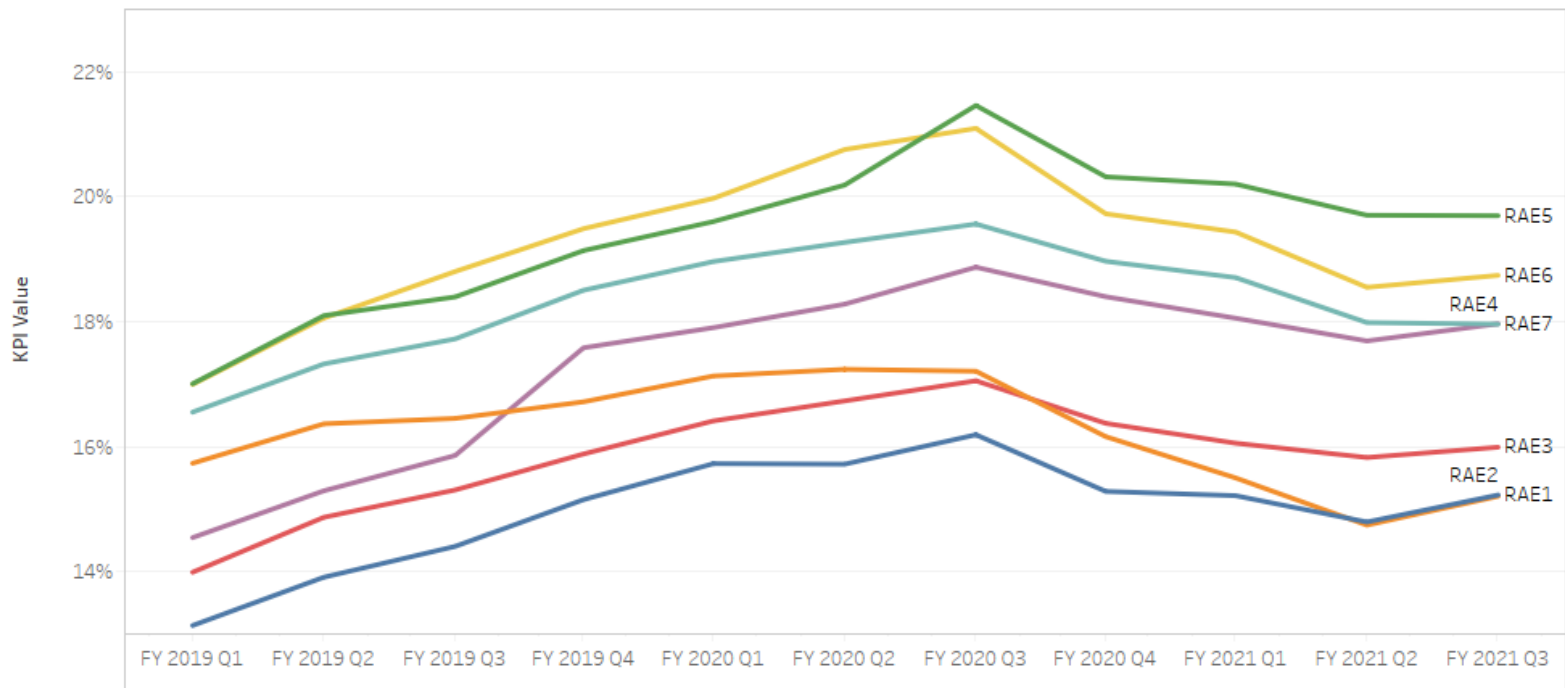


	FY 2019				FY 2020				FY 2021			Risk Adjusted ED PKPY Baseline
	Q1	Q2	Q3	Q4	Q1	Q2	Q3	Q4	Q1	Q2	Q3	
RAE1	595.9	595.3	603.4	608.9	607.2	618.1	609.4	556.1	529.7	487.4	443.1	600.6
RAE2	612.8	610.9	609.1	604.8	607.6	611.6	614.9	559.9	525.7	487.5	442.1	616.2
RAE3	665.9	662.4	660.5	661.8	664.8	668.7	669.3	602.7	560.3	505.5	454.2	661.6
RAE4	562.5	552.5	548.5	549.4	548.2	549.4	541.3	496.1	473.2	434.7	402.6	565.5
RAE5	652.8	647.8	640.5	636.9	636.2	644.7	645.1	587.9	550.1	500.1	466.3	644.6
RAE6	588.5	577.1	573.8	574.4	577.6	581.6	588.5	534.6	507.6	468.3	426.6	582.6
RAE7	708.0	701.3	700.2	705.6	713.3	722.7	723.9	660.1	619.8	559.7	503.8	701.8

Target Met
 Met Target Tier 1
 Met Target Tier 2
 No Target Met



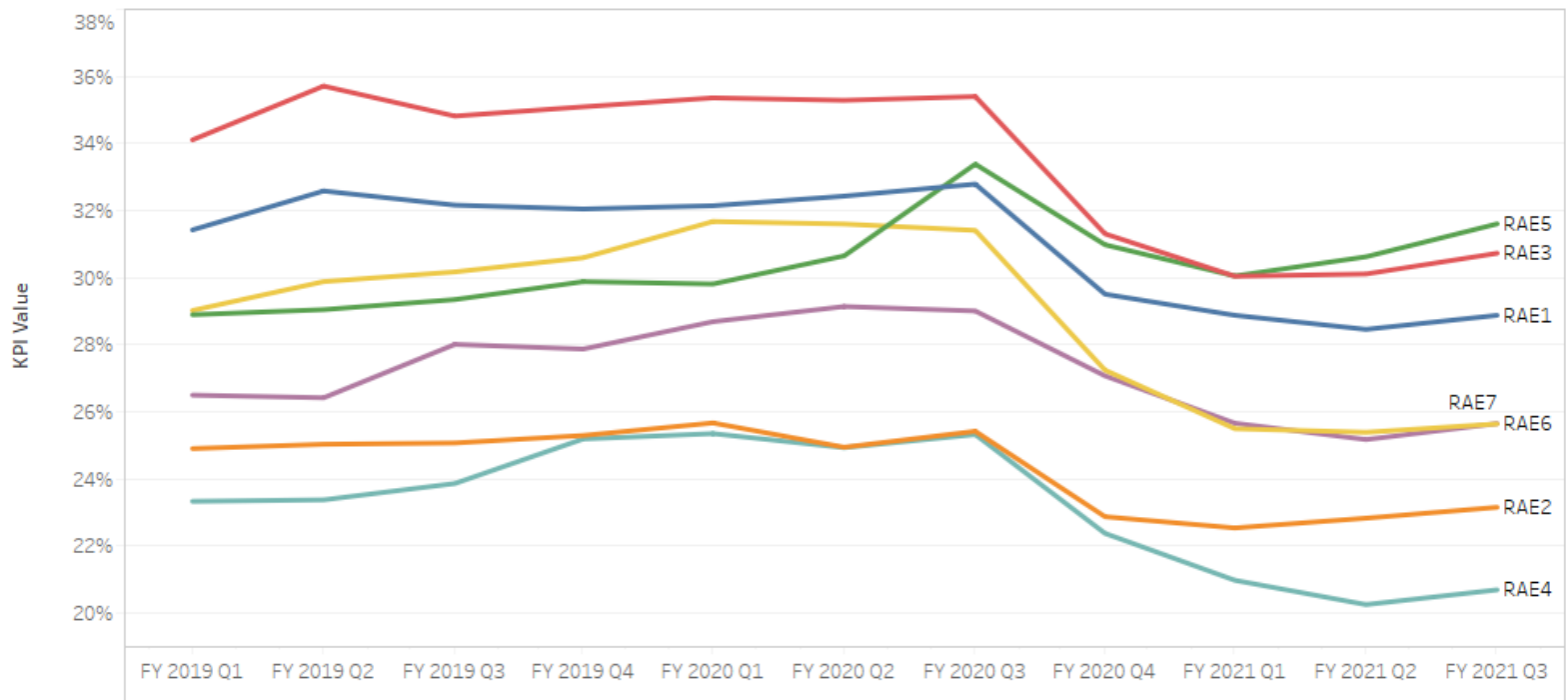
BH Engagement KPI Time Trend



	FY 2019				FY 2020				FY 2021			BH Baseline	Target Met ■ Met Target Tier 1 ■ Met Target Tier 2 ■ No Target Met
	Q1	Q2	Q3	Q4	Q1	Q2	Q3	Q4	Q1	Q2	Q3		
RAE1	13.14%	13.91%	14.40%	15.15%	15.73%	15.72%	16.19%	15.28%	15.21%	14.79%	15.23%	12.82%	
RAE2	15.73%	16.37%	16.45%	16.72%	17.13%	17.24%	17.21%	16.16%	15.50%	14.74%	15.20%	15.23%	
RAE3	13.99%	14.87%	15.31%	15.88%	16.41%	16.73%	17.05%	16.37%	16.05%	15.83%	15.99%	13.69%	
RAE4	16.55%	17.32%	17.72%	18.50%	18.96%	19.27%	19.56%	18.97%	18.71%	17.99%	17.96%	16.47%	
RAE5	17.01%	18.10%	18.40%	19.14%	19.60%	20.19%	21.46%	20.32%	20.20%	19.70%	19.70%	16.74%	
RAE6	17.00%	18.06%	18.80%	19.49%	19.97%	20.76%	21.09%	19.73%	19.43%	18.55%	18.74%	16.55%	
RAE7	14.54%	15.29%	15.86%	17.58%	17.90%	18.28%	18.87%	18.40%	18.06%	17.69%	17.97%	14.26%	



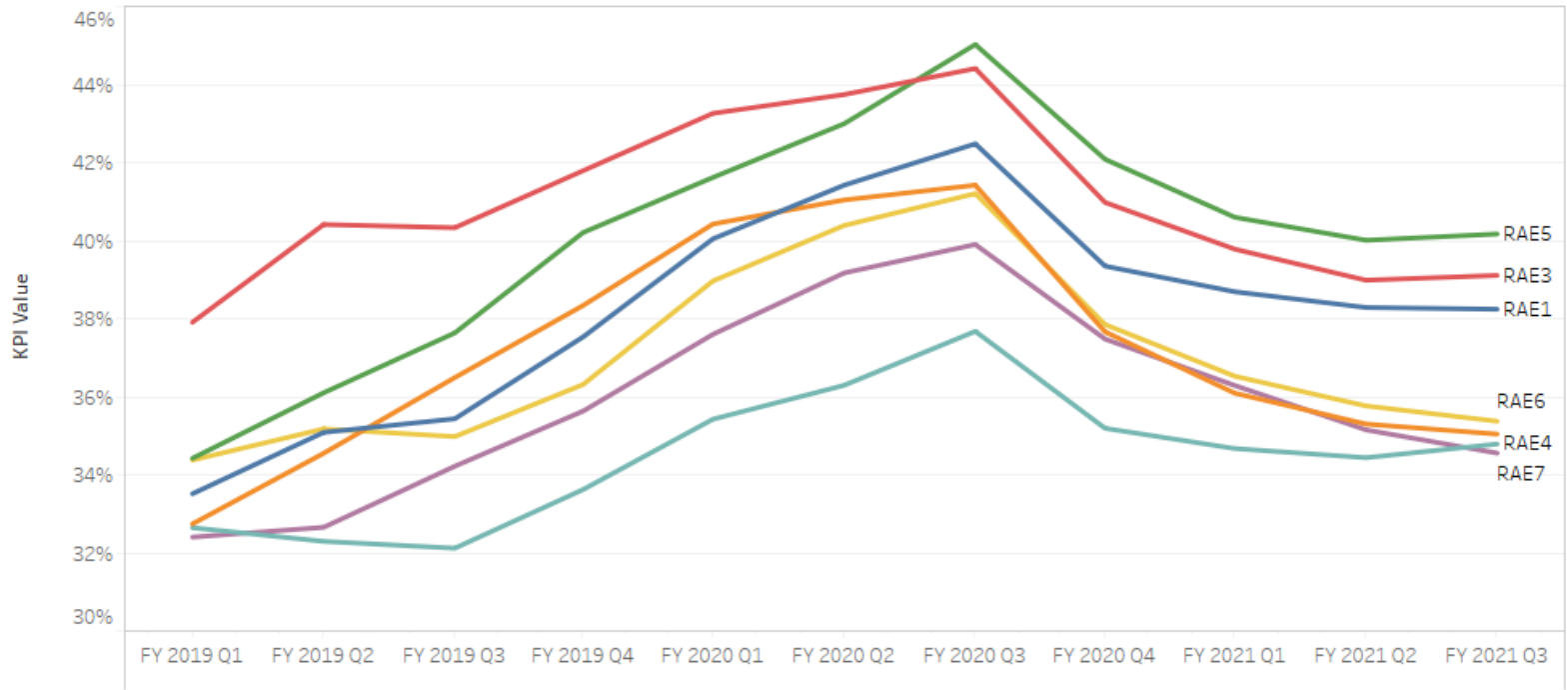
Well Visits KPI Time Trend



RAE	FY 2019				FY 2020				FY 2021			Well Visits Baseline	Target Met
	Q1	Q2	Q3	Q4	Q1	Q2	Q3	Q4	Q1	Q2	Q3		
RAE1	31.43%	32.59%	32.17%	32.05%	32.15%	32.43%	32.79%	29.51%	28.88%	28.46%	28.88%	31.53%	Met Target Tier 2
RAE2	24.91%	25.04%	25.08%	25.30%	25.67%	24.95%	25.43%	22.88%	22.55%	22.84%	23.16%	25.36%	Met Target Tier 1
RAE3	34.11%	35.71%	34.82%	35.10%	35.36%	35.29%	35.40%	31.31%	30.05%	30.11%	30.73%	34.56%	No Target Met
RAE4	23.34%	23.38%	23.87%	25.20%	25.36%	24.94%	25.33%	22.38%	20.99%	20.26%	20.70%	23.66%	No Target Met
RAE5	28.90%	29.05%	29.35%	29.88%	29.81%	30.65%	33.39%	30.98%	30.05%	30.63%	31.61%	29.85%	Met Target Tier 2
RAE6	29.03%	29.89%	30.18%	30.60%	31.68%	31.60%	31.41%	27.25%	25.50%	25.40%	25.65%	29.60%	Met Target Tier 1
RAE7	26.50%	26.42%	28.02%	27.88%	28.69%	29.14%	29.01%	27.08%	25.67%	25.18%	25.66%	27.38%	Met Target Tier 1



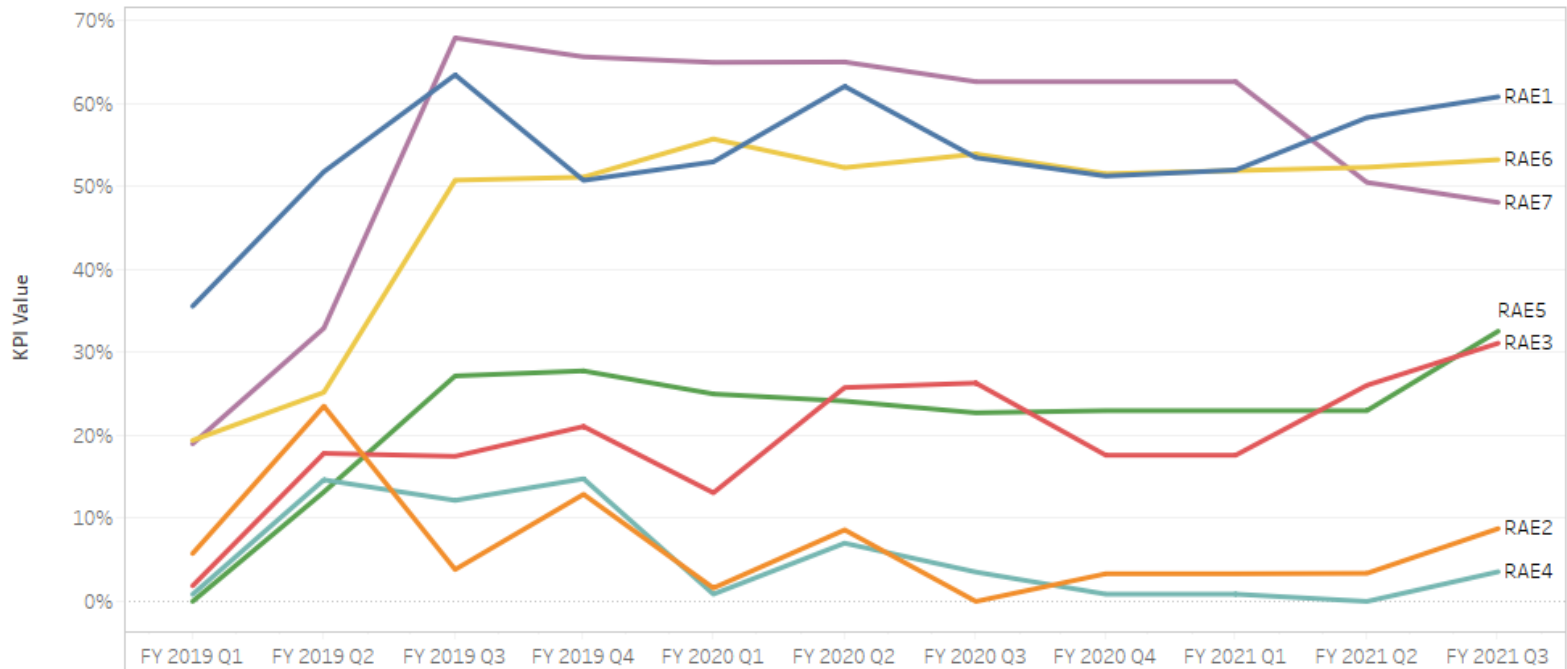
Dental Visits KPI Time Trend



	FY 2019				FY 2020				FY 2021			Dental Visits Baseline	Target Met
	Q1	Q2	Q3	Q4	Q1	Q2	Q3	Q4	Q1	Q2	Q3		
RAE1	33.52%	35.09%	35.44%	37.53%	40.05%	41.42%	42.48%	39.35%	38.69%	38.29%	38.24%	34.52%	Met Target Tier 1
RAE2	32.74%	34.55%	36.49%	38.34%	40.42%	41.04%	41.42%	37.66%	36.09%	35.30%	35.04%	34.07%	Met Target Tier 1
RAE3	37.91%	40.41%	40.33%	41.79%	43.26%	43.74%	44.41%	40.98%	39.78%	38.99%	39.11%	38.75%	Met Target Tier 1
RAE4	32.65%	32.30%	32.12%	33.62%	35.43%	36.29%	37.68%	35.19%	34.67%	34.44%	34.79%	32.63%	Met Target Tier 1
RAE5	34.42%	36.10%	37.64%	40.21%	41.62%	42.99%	45.02%	42.08%	40.60%	40.01%	40.17%	35.42%	Met Target Tier 2
RAE6	34.38%	35.18%	34.98%	36.32%	38.97%	40.39%	41.20%	37.85%	36.53%	35.77%	35.37%	35.04%	Met Target Tier 1
RAE7	32.41%	32.66%	34.22%	35.63%	37.60%	39.17%	39.90%	37.48%	36.29%	35.15%	34.56%	33.67%	No Target Met



Health Neighborhood pt. 1 KPI Time Trend

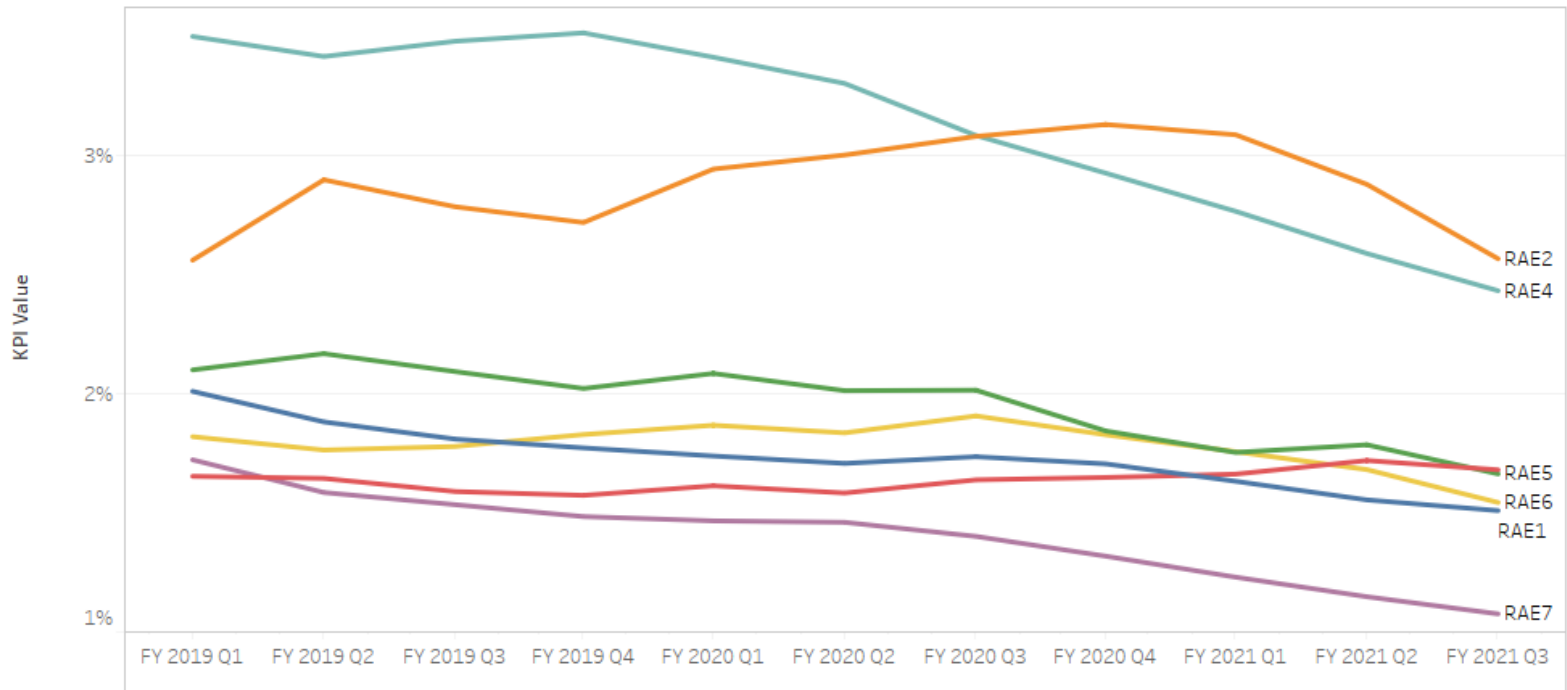


	FY 2019				FY 2020				FY 2021		
	Q1	Q2	Q3	Q4	Q1	Q2	Q3	Q4	Q1	Q2	Q3
RAE1	35.57%	51.78%	63.45%	50.74%	52.97%	62.07%	53.47%	51.26%	51.98%	58.29%	60.80%
RAE2	5.77%	23.53%	3.85%	12.90%	1.61%	8.62%	0.00%	3.33%	3.33%	3.39%	8.77%
RAE3	1.88%	17.84%	17.49%	21.08%	13.09%	25.77%	26.32%	17.62%	17.62%	26.04%	31.11%
RAE4	0.85%	14.66%	12.17%	14.78%	0.88%	7.02%	3.54%	0.88%	0.88%	0.00%	3.57%
RAE5	0.00%	13.19%	27.17%	27.78%	25.00%	24.14%	22.73%	22.99%	22.99%	22.99%	32.56%
RAE6	19.40%	25.19%	50.76%	51.13%	55.73%	52.27%	53.91%	51.54%	51.91%	52.31%	53.23%
RAE7	18.99%	32.93%	67.90%	65.63%	64.95%	65.00%	62.63%	62.63%	62.63%	50.50%	48.08%

Target Met
■ Met Target
■ No Target Met



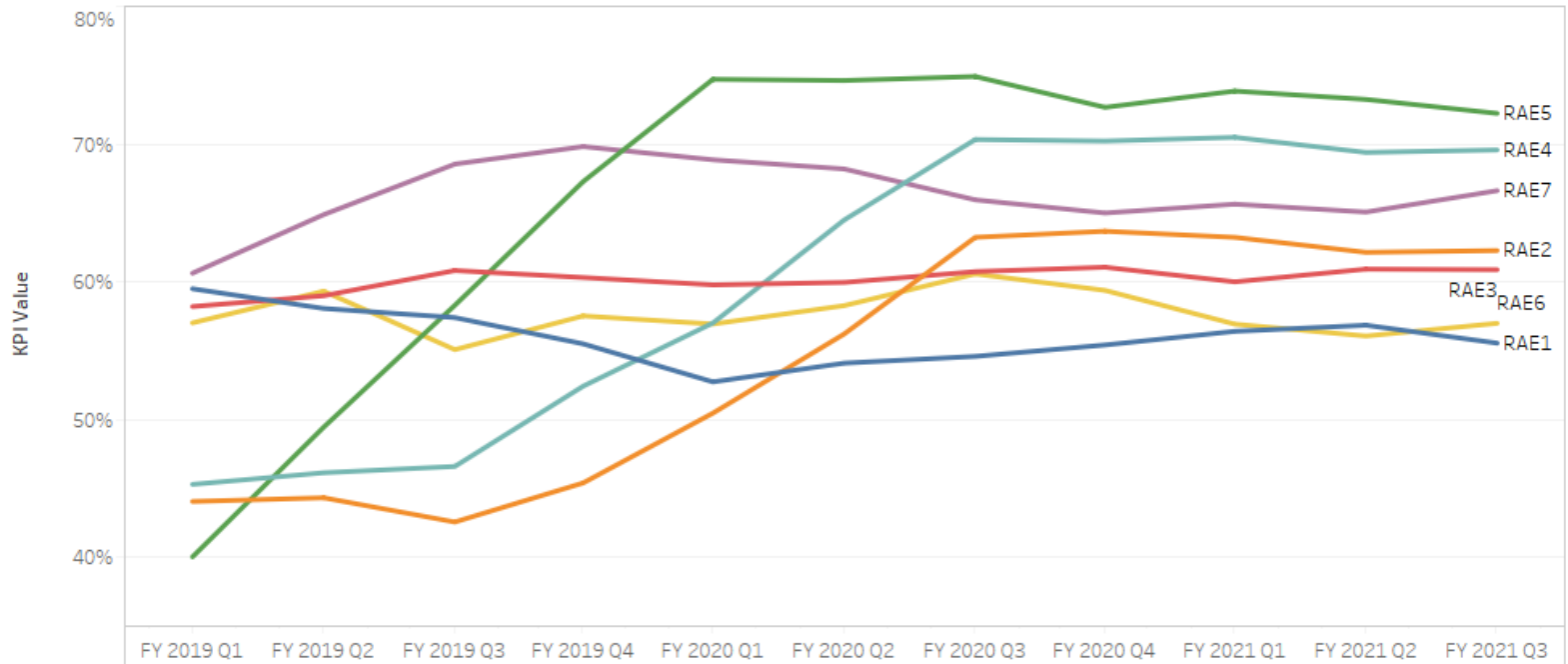
Health Neighborhood Pt. 2 KPI Time Trend



	FY 2019				FY 2020				FY 2021			HN pt. 2 Baseline	Target Met	
	Q1	Q2	Q3	Q4	Q1	Q2	Q3	Q4	Q1	Q2	Q3		Met Target Tier 2	No Target Met
RAE1	2.01%	1.88%	1.81%	1.77%	1.74%	1.71%	1.74%	1.71%	1.63%	1.55%	1.51%	2.01%		
RAE2	2.56%	2.90%	2.78%	2.72%	2.94%	3.00%	3.08%	3.13%	3.09%	2.88%	2.57%	2.59%		
RAE3	1.65%	1.64%	1.59%	1.57%	1.61%	1.58%	1.64%	1.65%	1.66%	1.72%	1.68%	1.68%		
RAE4	3.50%	3.41%	3.48%	3.51%	3.41%	3.30%	3.08%	2.92%	2.76%	2.59%	2.43%	3.52%		
RAE5	2.10%	2.17%	2.09%	2.02%	2.08%	2.01%	2.01%	1.84%	1.75%	1.79%	1.66%	2.22%		
RAE6	1.82%	1.76%	1.78%	1.83%	1.87%	1.84%	1.91%	1.83%	1.76%	1.68%	1.54%	1.91%		
RAE7	1.72%	1.59%	1.53%	1.48%	1.47%	1.46%	1.40%	1.32%	1.23%	1.15%	1.08%	1.76%		



Prenatal KPI Time Trend



	FY 2019				FY 2020				FY 2021			Prenatal Visits Baseline	Target Met ■ Met Target Tier 2 ■ Met Target Tier 1 ■ No Target Met
	Q1	Q2	Q3	Q4	Q1	Q2	Q3	Q4	Q1	Q2	Q3		
RAE1	59.50%	58.07%	57.40%	55.50%	52.74%	54.10%	54.59%	55.42%	56.41%	56.85%	55.55%	58.91%	
RAE2	44.05%	44.32%	42.56%	45.40%	50.47%	56.21%	63.23%	63.67%	63.23%	62.14%	62.27%	43.63%	
RAE3	58.21%	58.99%	60.82%	60.31%	59.78%	59.96%	60.74%	61.06%	60.00%	60.92%	60.88%	58.32%	
RAE4	45.30%	46.14%	46.60%	52.42%	57.01%	64.49%	70.33%	70.22%	70.49%	69.39%	69.57%	44.71%	
RAE5	40.03%	49.45%	58.30%	67.28%	74.70%	74.62%	74.91%	72.67%	73.85%	73.24%	72.23%	46.09%	
RAE6	57.02%	59.32%	55.08%	57.52%	56.94%	58.27%	60.58%	59.38%	56.93%	56.07%	56.99%	56.15%	
RAE7	60.63%	64.88%	68.55%	69.82%	68.86%	68.20%	65.95%	65.00%	65.64%	65.07%	66.62%	58.50%	





Questions?

