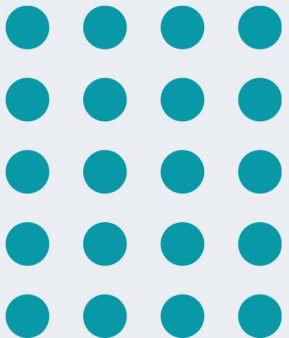


Provider Forum – Wraparound Colorado

Summer 2025





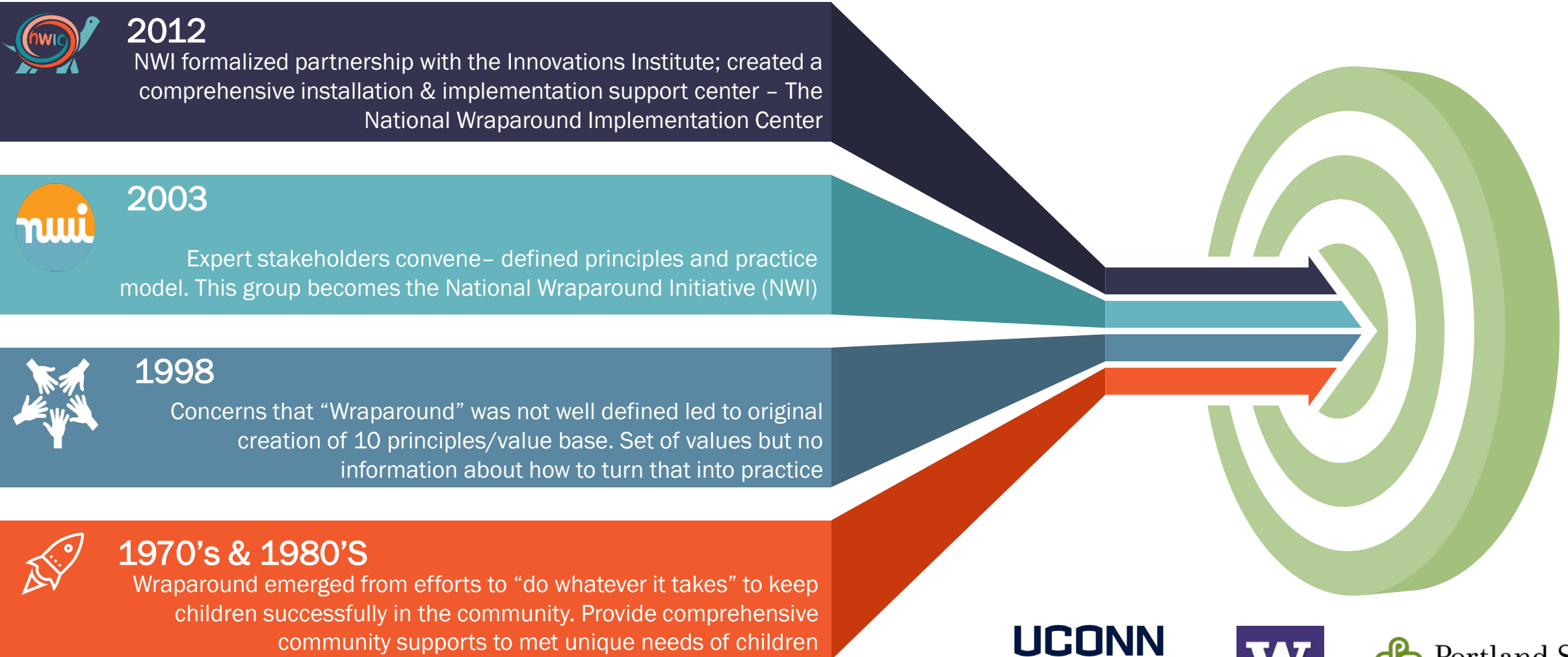
Change often feels confusing



Information
can help clear
a path



National Wraparound Implementation Center



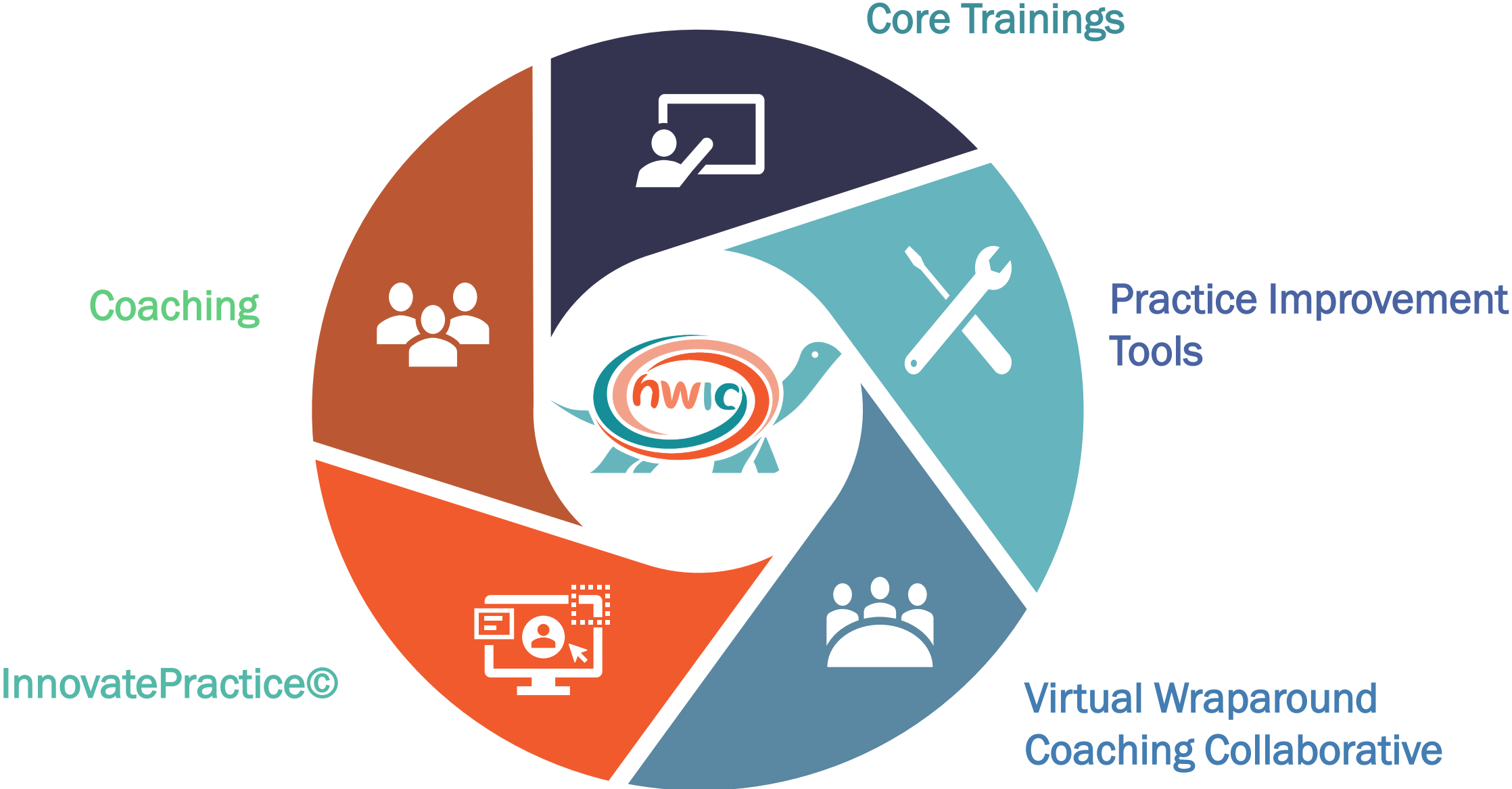
The National Wraparound Implementation Center (NWIC) advances high-quality Wraparound for children and youth with complex needs and their families by building sustainable system and workforce capacity through evidence-informed training, coaching, implementation support, and accountability tools.



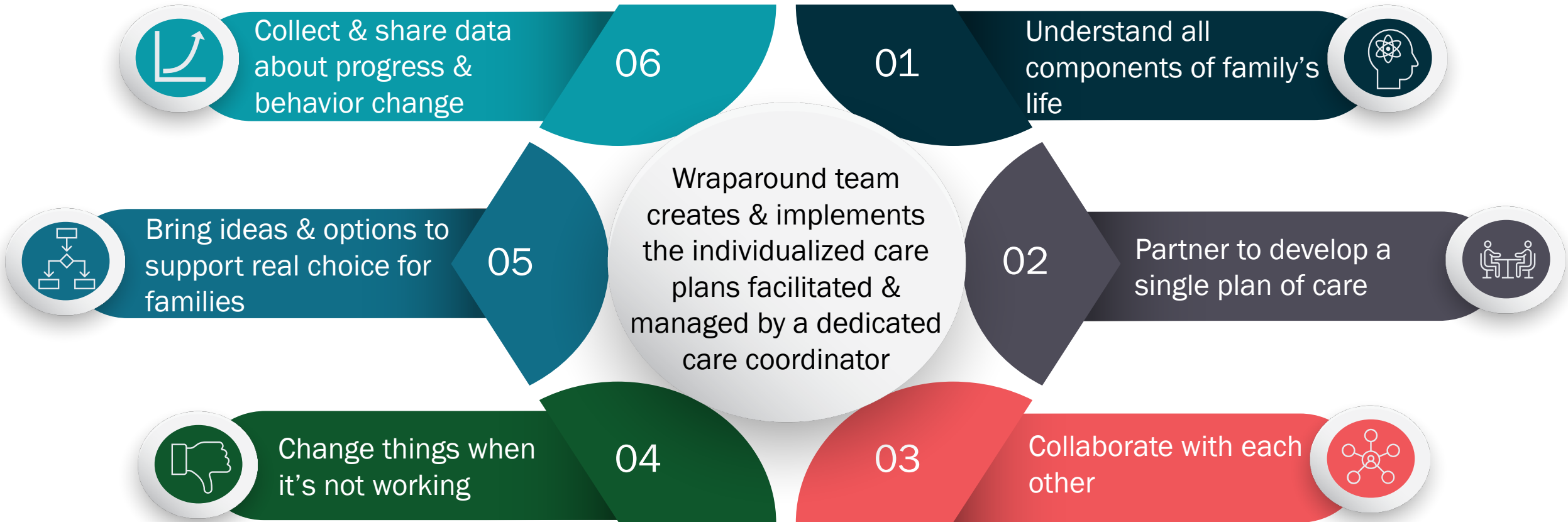
**National
Wraparound
Implementation
Center**

Advancing Systems ○ Enhancing the Workforce ○ Improving Outcomes

Implementation Support



Wraparound Team Role



- ✓ Integrate mandates & information from child-serving agencies & other support organizations

- ✓ Builds on existing relationships and supports in the family's life



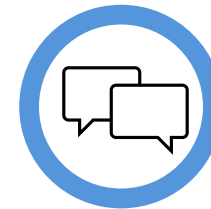
Foundation Trainings



Introduction to System of
Care & Team Roles in
Wraparound (Online)



Introduction to
Wraparound (3 days)



Engagement in the
Wraparound Process
(1 day)



Advanced Trainings



Intermediate
Wraparound:
Improving Wraparound
Practice (2 days)

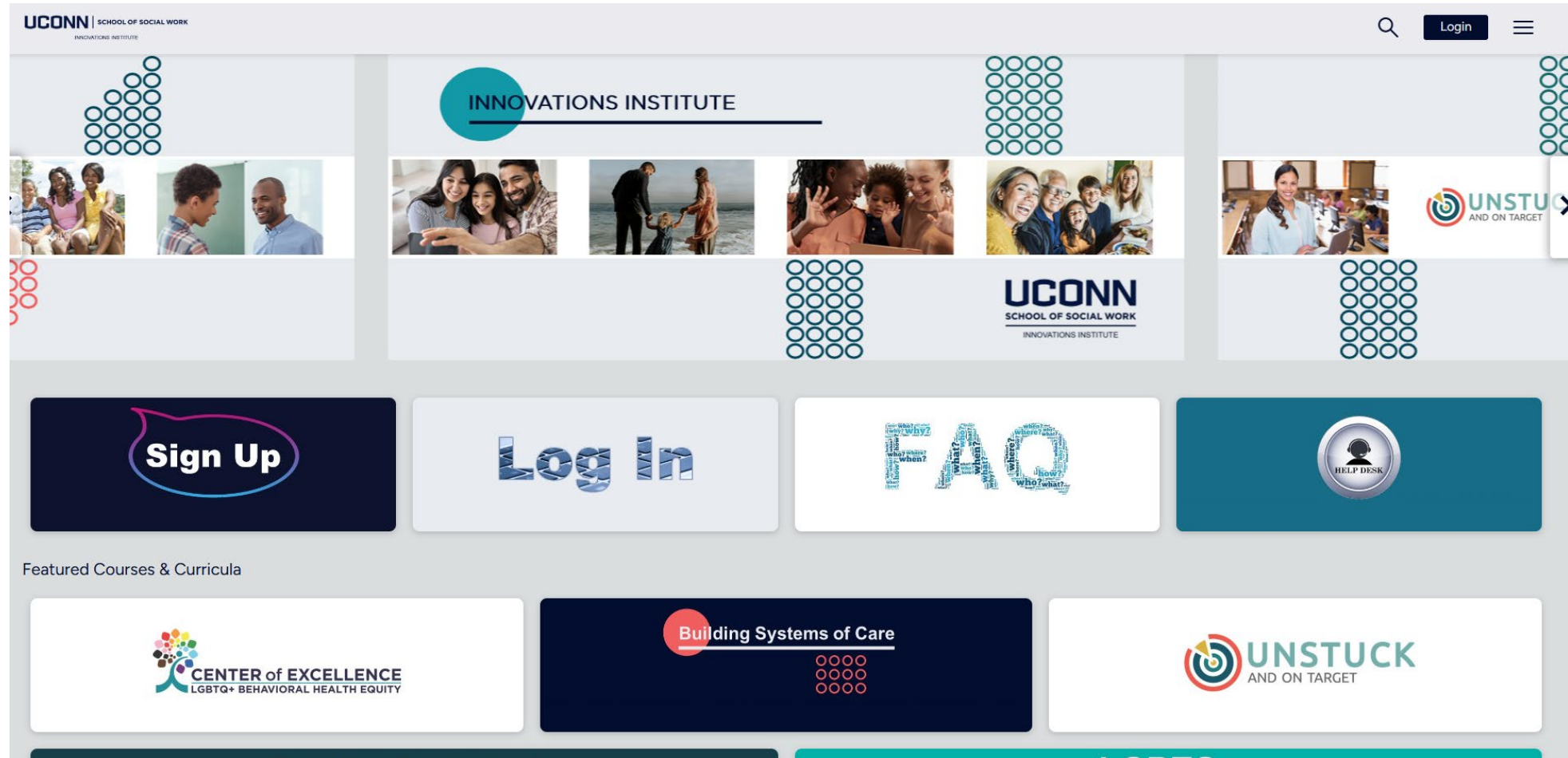


Advancing Wraparound
Practice: Supervision
and Managing to
Quality (2 day)



Introduction to
Coaching and Training
Tools/Supervision in
Wraparound (1 day)






Registering for Wraparound Training

Wraparound Practice Improvement Tools (WPITs)

- Wraparound Supervisor Checklist
- Coaching Observation Measure for Effective Teams (COMET)
- Supervisory Assessment System (SAS)
- Supportive Transfer of Essential Practice Skills (STEPS) Wheel
- Coaching Response to Enhance Skill Transfer (CREST)



Supervision Shifts



More direction
and reflection on
staff's ability to
implement
Wraparound with
consistency and
quality



Less talking
about families'
behavior and
planning **for**
families

Wraparound Coaching and Supervision



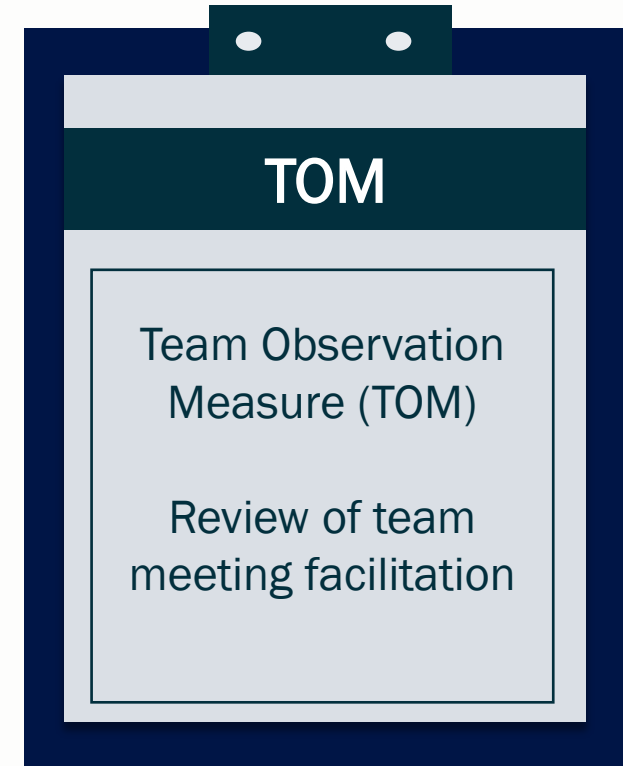
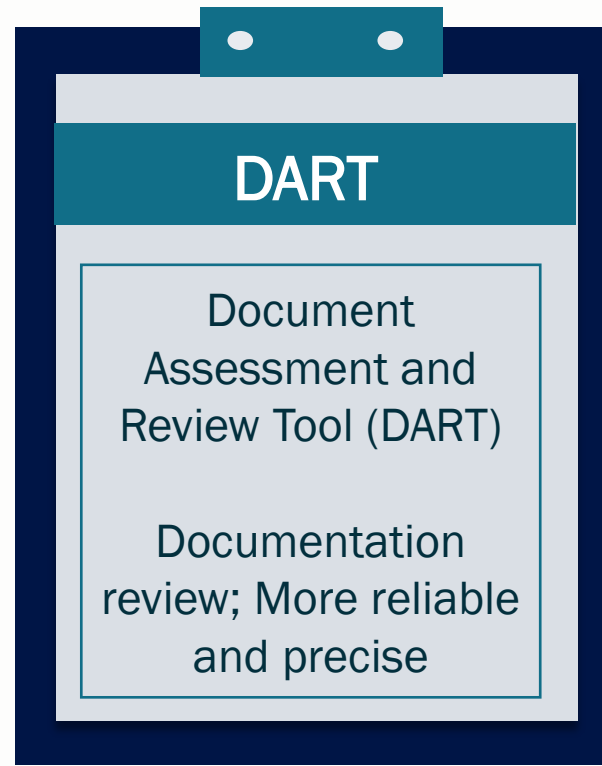
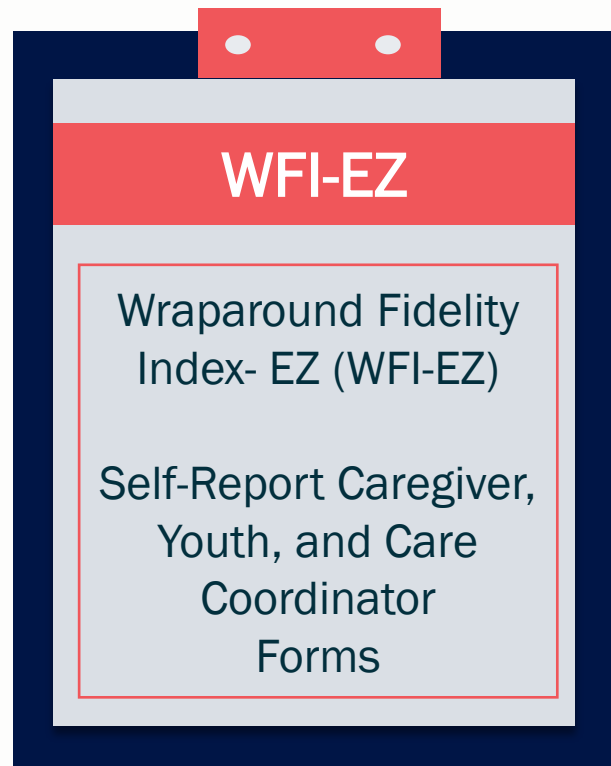
Innovate Practice



INFINITE POSSIBILITIES

Asynchronous Virtual Coaching

Wraparound Fidelity Assessment System (WFAS)



Wraparound Providers and Frontline Staff



Readiness

- Program Reform Support Instrument (PRSI)
- Online learning modules*
- Overview webinar or training

*Online modules must be completed prior to training



Training*

1. Introduction to Wraparound (3-days)
2. Engagement in the Wraparound Process (1-day)
3. Intermediate Wraparound: Improving Wraparound Practice (2-days)

*All practice-level trainings must be completed in order and within first 6 months of hire



Supervisor Support & Training*

1. Supervision in Wraparound (1-day)
2. Advancing Wraparound Practice: Supervising and Managing to Quality (2-day)

*Supervisors must attend all practice-level trainings and must complete Introduction to Wraparound prior to the first supervisor training and complete this series within 12 months of hire

Expert Coaching

- Providers are assigned a National Coach as well as a Local Coach Candidate
- Monthly coaching and support for implementation

Skill Development & Fidelity

- Wraparound Supervisor Checklist
- Coaching Observation Measure for Effective Teams (COMET)
- Supervisory Assessment System (SAS)
- Coaching Response to Enhance Skill Transfer (CREST)

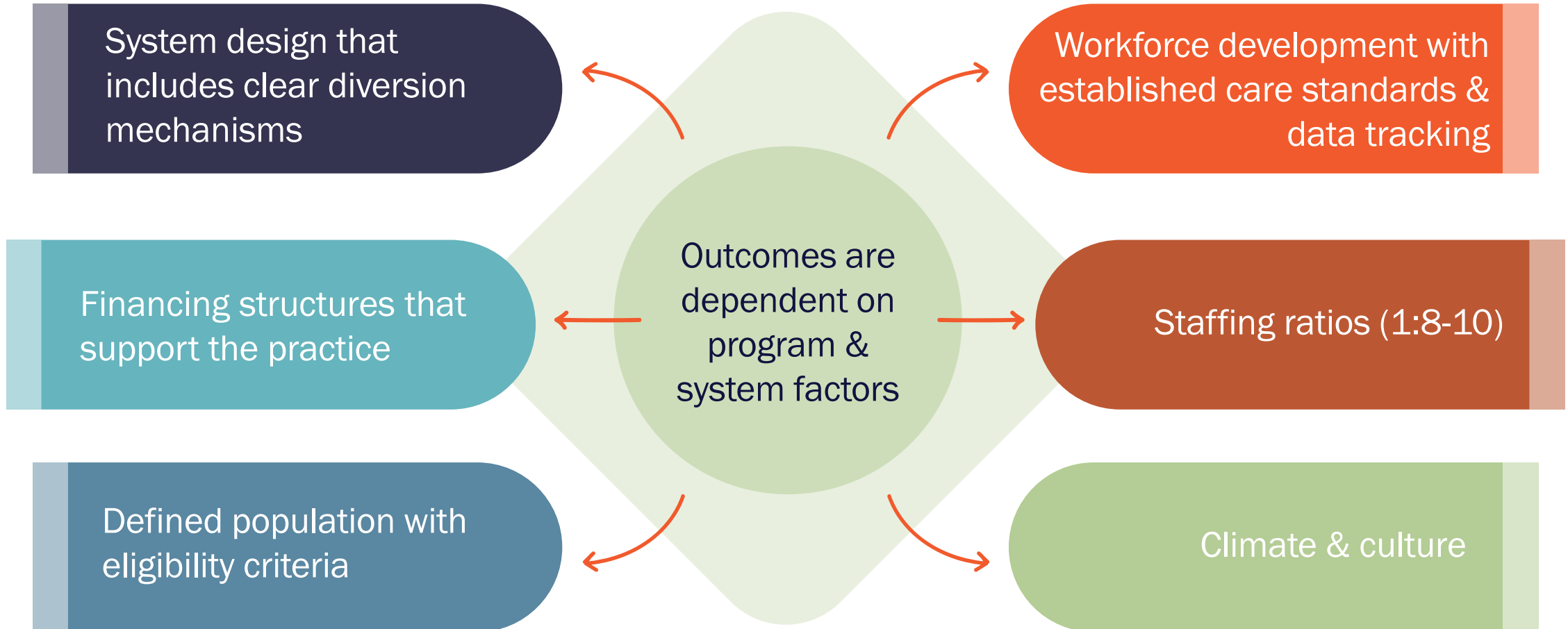
Continuous Quality Improvement

- Fidelity Assessment (Document Review and Assessment Tool (DART) & Wraparound Fidelity index-EZ (WFI-EZ))
- Family Satisfaction



What is needed to assure good outcomes of Wraparound

Wraparound Implementation & Practice Quality Standards created to support analysis of crucial factors associated with success



Contacts

Kim Estep,
Kim.Estep@uconn.edu

Kim Coviello
Kim.Coviello@uconn.edu



Sara Strader
Sara.Strader@uconn.edu

NWIC
NWIC@uconn.edu