

# Key Performance Indicators (KPIs) SFYs 18-22

Updated February 2023



**COLORADO**

Department of Health Care  
Policy & Financing

# Key Performance Indicators

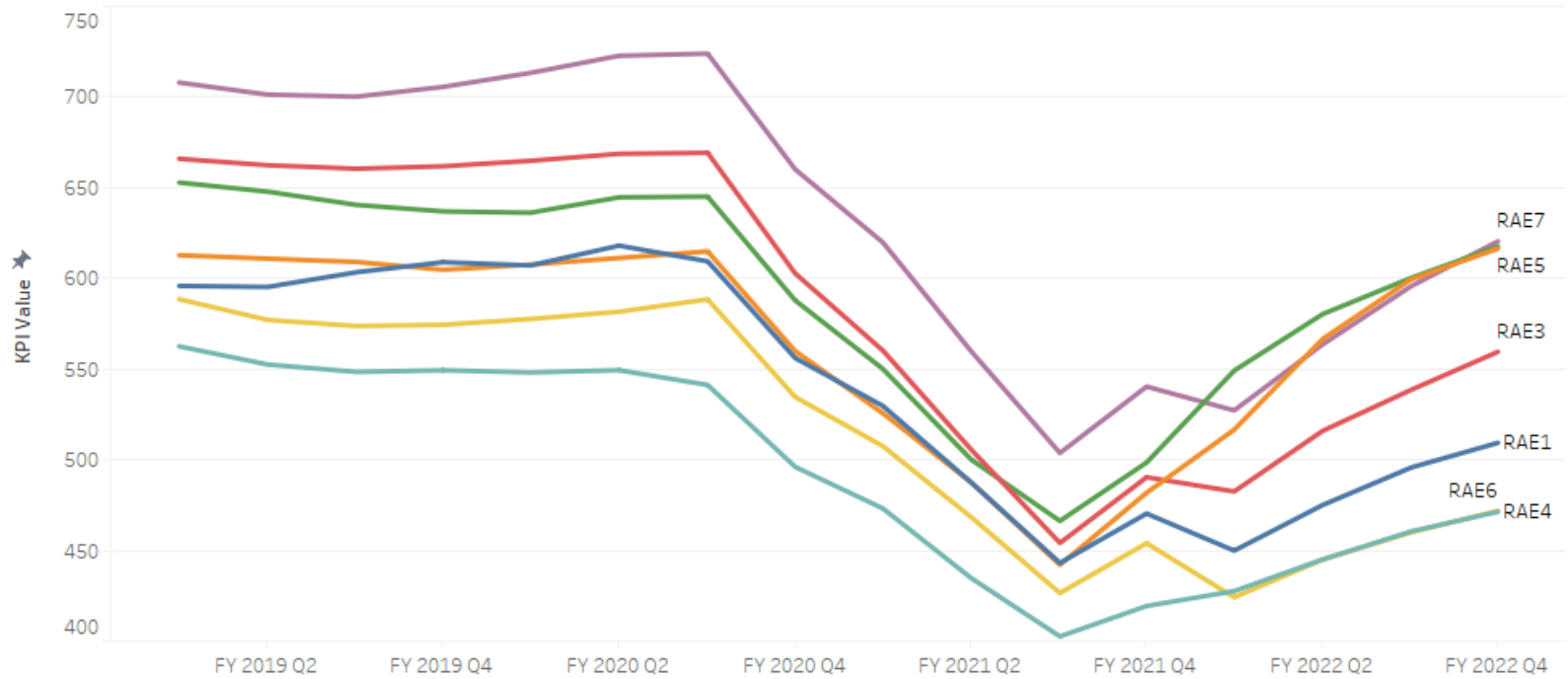
1. Emergency Department Visits PKPY (Risk Adjusted)
2. Behavioral Health Engagement
3. Dental Visits
4. Prenatal Visits
5. Child and Adolescent Well Visits
6. Well Child Visits 0-15 Months
7. Well Child Visits 15-30 Months



**COLORADO**

Department of Health Care  
Policy & Financing

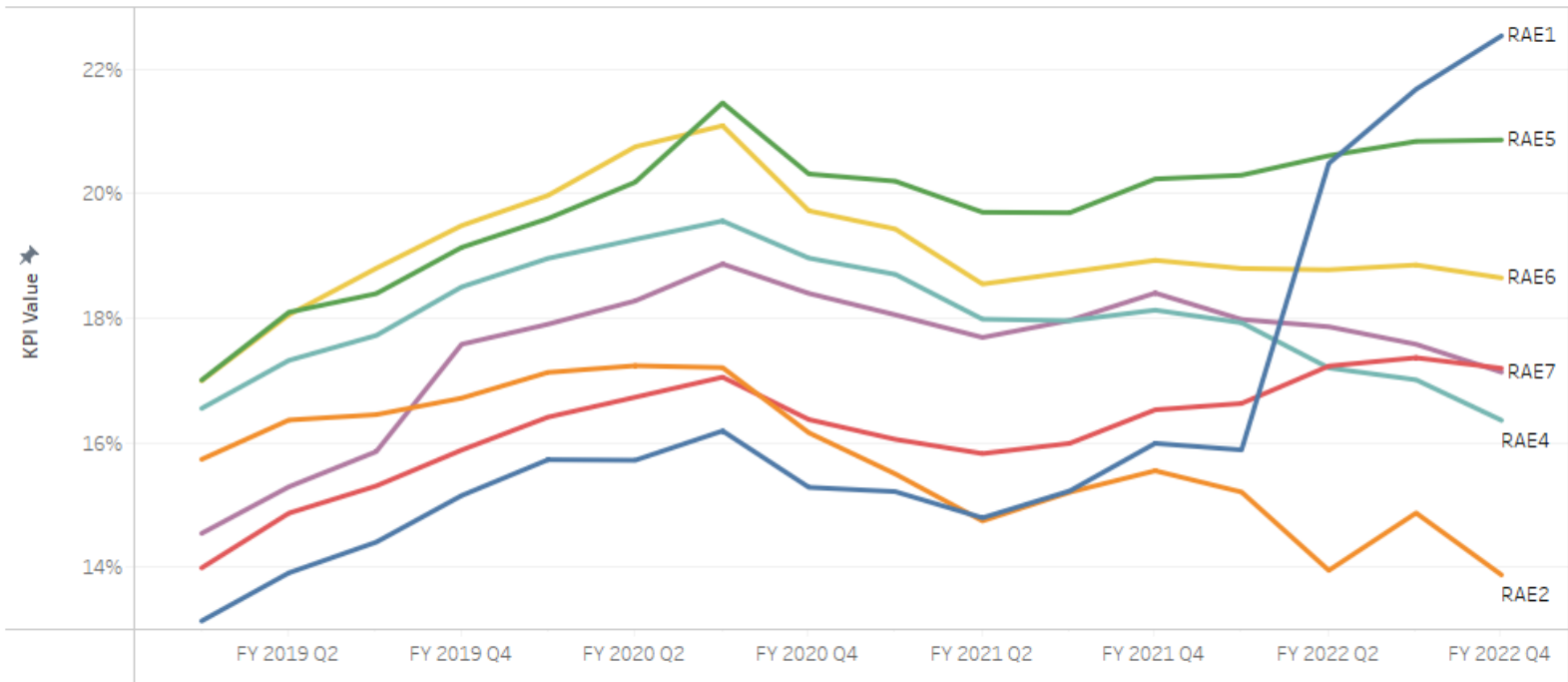
# Risk Adjusted ED Visits PKPY KPI Time Trend



	FY 2020				FY 2021				FY 2022				Risk Adjusted ED PKPY Baseline	Target Met <span style="color: orange;">■</span> Met Target Tier 1 <span style="color: green;">■</span> Met Target Tier 2 <span style="color: red;">■</span> No Target Met
	Q1	Q2	Q3	Q4	Q1	Q2	Q3	Q4	Q1	Q2	Q3	Q4		
RAE1	607.2	618.1	609.4	556.1	529.7	487.4	443.1	470.4	449.9	475.1	495.8	509.4	584.5	
RAE2	607.6	611.6	614.9	559.9	525.7	487.5	442.1	481.8	516.6	566.7	599.5	616.4	610.5	
RAE3	664.8	668.7	669.3	602.7	560.3	505.5	454.2	490.4	482.5	516.0	538.6	559.5	645.3	
RAE4	548.2	549.4	541.3	496.1	473.2	434.7	402.6	419.4	427.6	445.1	460.6	471.4	554.3	
RAE5	636.2	644.7	645.1	587.9	550.1	500.1	466.3	498.5	549.1	580.3	600.3	617.6	645.1	
RAE6	577.6	581.6	588.5	534.6	507.6	468.3	426.6	454.0	424.2	445.0	460.0	471.9	566.1	
RAE7	713.3	722.7	723.9	660.1	619.8	559.7	503.8	540.4	527.2	563.6	595.8	620.4	686.0	



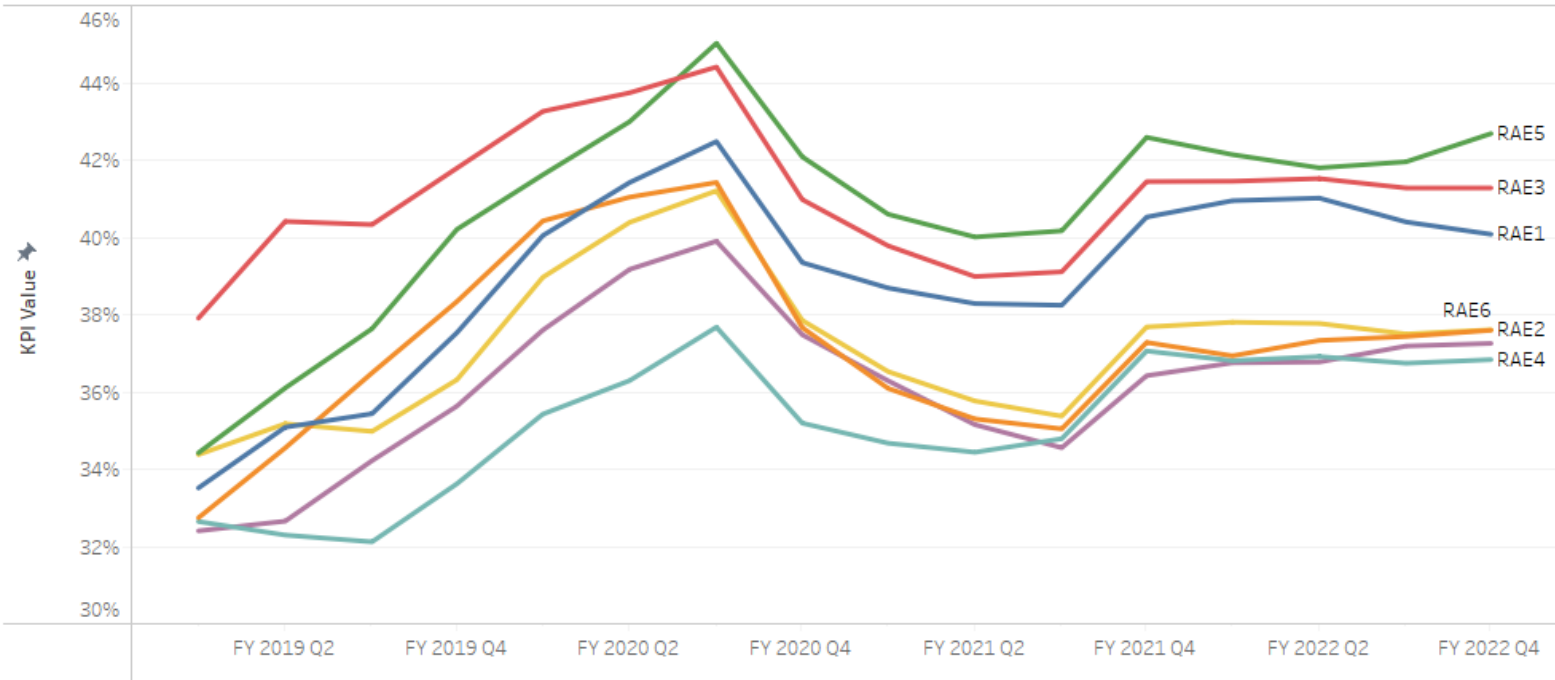
# BH Engagement KPI Time Trend



	FY 2020				FY 2021				FY 2022				BH Baseline	Target Met <span style="color: orange;">■</span> Met Target Ti.. <span style="color: green;">■</span> Met Target Ti.. <span style="color: red;">■</span> No Target Met
	Q1	Q2	Q3	Q4	Q1	Q2	Q3	Q4	Q1	Q2	Q3	Q4		
RAE1	15.73%	15.72%	16.19%	15.28%	15.21%	14.79%	15.23%	15.99%	15.88%	20.49%	21.68%	22.54%	13.58%	
RAE2	17.13%	17.24%	17.21%	16.16%	15.50%	14.74%	15.20%	15.55%	15.21%	13.95%	14.87%	13.88%	15.56%	
RAE3	16.41%	16.73%	17.05%	16.37%	16.05%	15.83%	15.99%	16.53%	16.63%	17.23%	17.37%	17.20%	14.50%	
RAE4	18.96%	19.27%	19.56%	18.97%	18.71%	17.99%	17.96%	18.13%	17.93%	17.20%	17.01%	16.36%	17.22%	
RAE5	19.60%	20.19%	21.46%	20.32%	20.20%	19.70%	19.70%	20.24%	20.30%	20.61%	20.84%	20.87%	17.78%	
RAE6	19.97%	20.76%	21.09%	19.73%	19.43%	18.55%	18.74%	18.93%	18.80%	18.78%	18.86%	18.65%	17.53%	
RAE7	17.90%	18.28%	18.87%	18.40%	18.06%	17.69%	17.97%	18.41%	17.98%	17.86%	17.58%	17.13%	15.50%	



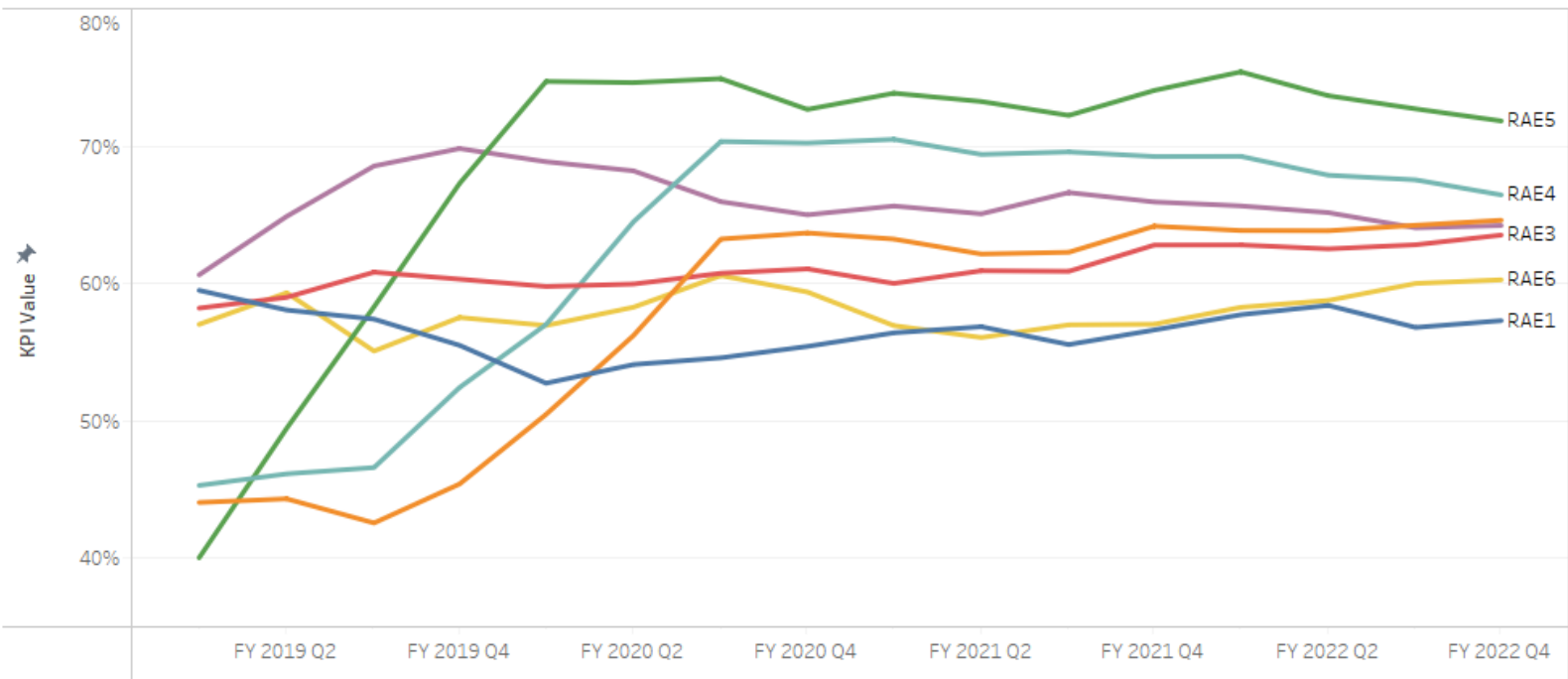
# Dental Visits KPI Time Trend



	FY 2020				FY 2021				FY 2022				Baseline	Target Met <span style="color: orange;">■</span> Met Target Tier 1 <span style="color: green;">■</span> Met Target Tier 2 <span style="color: red;">■</span> No Target Met
	Q1	Q2	Q3	Q4	Q1	Q2	Q3	Q4	Q1	Q2	Q3	Q4		
RAE1	40.05%	41.42%	42.48%	39.35%	38.69%	38.29%	38.24%	40.53%	40.95%	41.02%	40.40%	40.08%	35.91%	
RAE2	40.42%	41.04%	41.42%	37.66%	36.09%	35.30%	35.04%	37.28%	36.93%	37.33%	37.43%	37.60%	35.24%	
RAE3	43.26%	43.74%	44.41%	40.98%	39.78%	38.99%	39.11%	41.44%	41.45%	41.52%	41.28%	41.28%	39.50%	
RAE4	35.43%	36.29%	37.68%	35.19%	34.67%	34.44%	34.79%	37.06%	36.81%	36.92%	36.74%	36.84%	33.33%	
RAE5	41.62%	42.99%	45.02%	42.08%	40.60%	40.01%	40.17%	42.59%	42.14%	41.80%	41.95%	42.68%	37.38%	
RAE6	38.97%	40.39%	41.20%	37.85%	36.53%	35.77%	35.37%	37.68%	37.80%	37.77%	37.50%	37.61%	35.82%	
RAE7	37.60%	39.17%	39.90%	37.48%	36.29%	35.15%	34.56%	36.42%	36.75%	36.77%	37.19%	37.26%	34.75%	



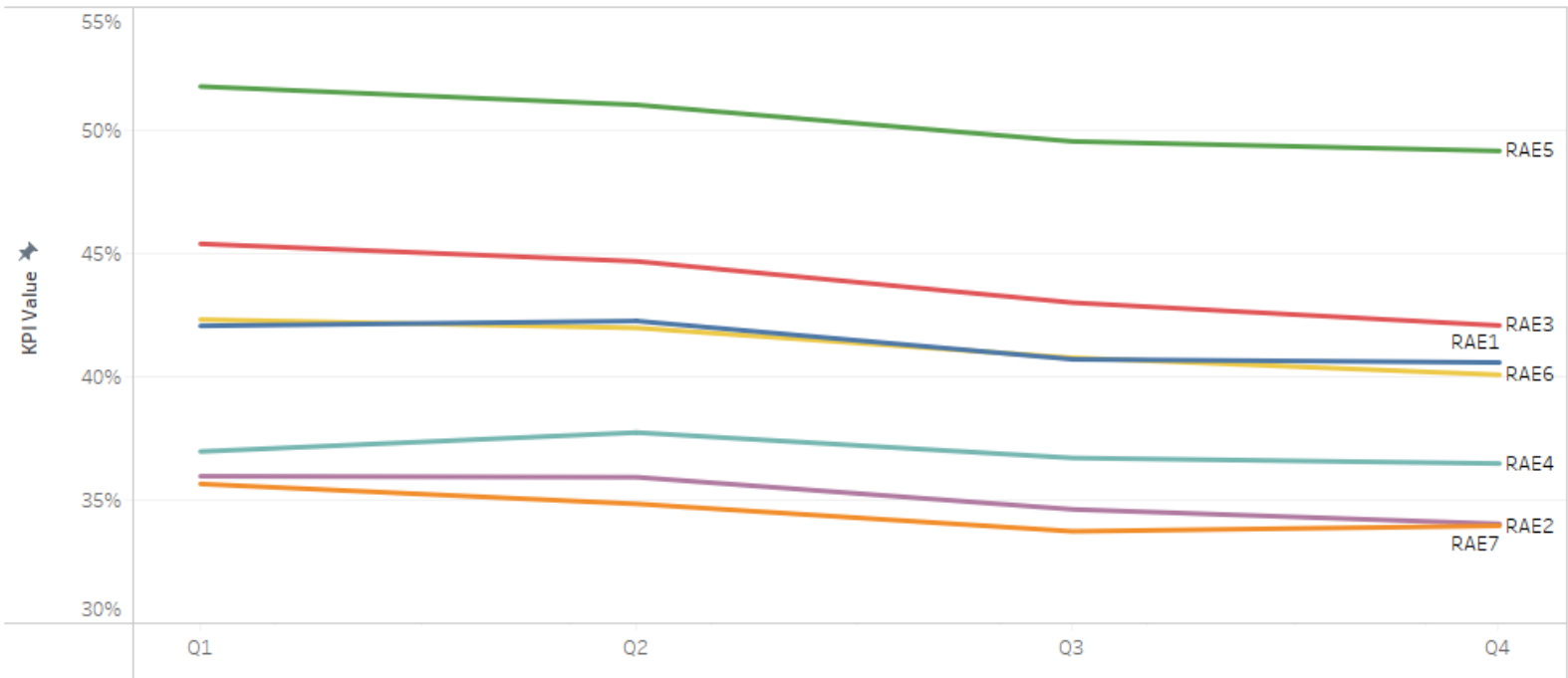
# Prenatal KPI Time Trend



	FY 2020				FY 2021				FY 2022				Prenatal Visits Baseline	Target Met
	Q1	Q2	Q3	Q4	Q1	Q2	Q3	Q4	Q1	Q2	Q3	Q4		
RAE1	52.74%	54.10%	54.59%	55.42%	56.41%	56.85%	55.55%	56.61%	57.73%	58.40%	56.80%	57.29%	57.82%	Met Target Tier 1
RAE2	50.47%	56.21%	63.23%	63.67%	63.23%	62.14%	62.27%	64.17%	63.85%	63.84%	64.23%	64.60%	48.75%	No Target Met
RAE3	59.78%	59.96%	60.74%	61.06%	60.00%	60.92%	60.88%	62.79%	62.80%	62.52%	62.81%	63.52%	59.13%	Met Target Tier 1
RAE4	57.01%	64.49%	70.33%	70.22%	70.49%	69.39%	69.57%	69.24%	69.25%	67.88%	67.54%	66.44%	51.57%	Met Target Tier 2
RAE5	74.70%	74.62%	74.91%	72.67%	73.85%	73.24%	72.23%	74.05%	75.40%	73.67%	72.71%	71.83%	54.06%	Met Target Tier 2
RAE6	56.94%	58.27%	60.58%	59.38%	56.93%	56.07%	56.99%	57.03%	58.26%	58.76%	60.00%	60.26%	57.04%	Met Target Tier 1
RAE7	68.86%	68.20%	65.95%	65.00%	65.64%	65.07%	66.62%	65.93%	65.65%	65.16%	64.05%	64.22%	60.83%	Met Target Tier 1



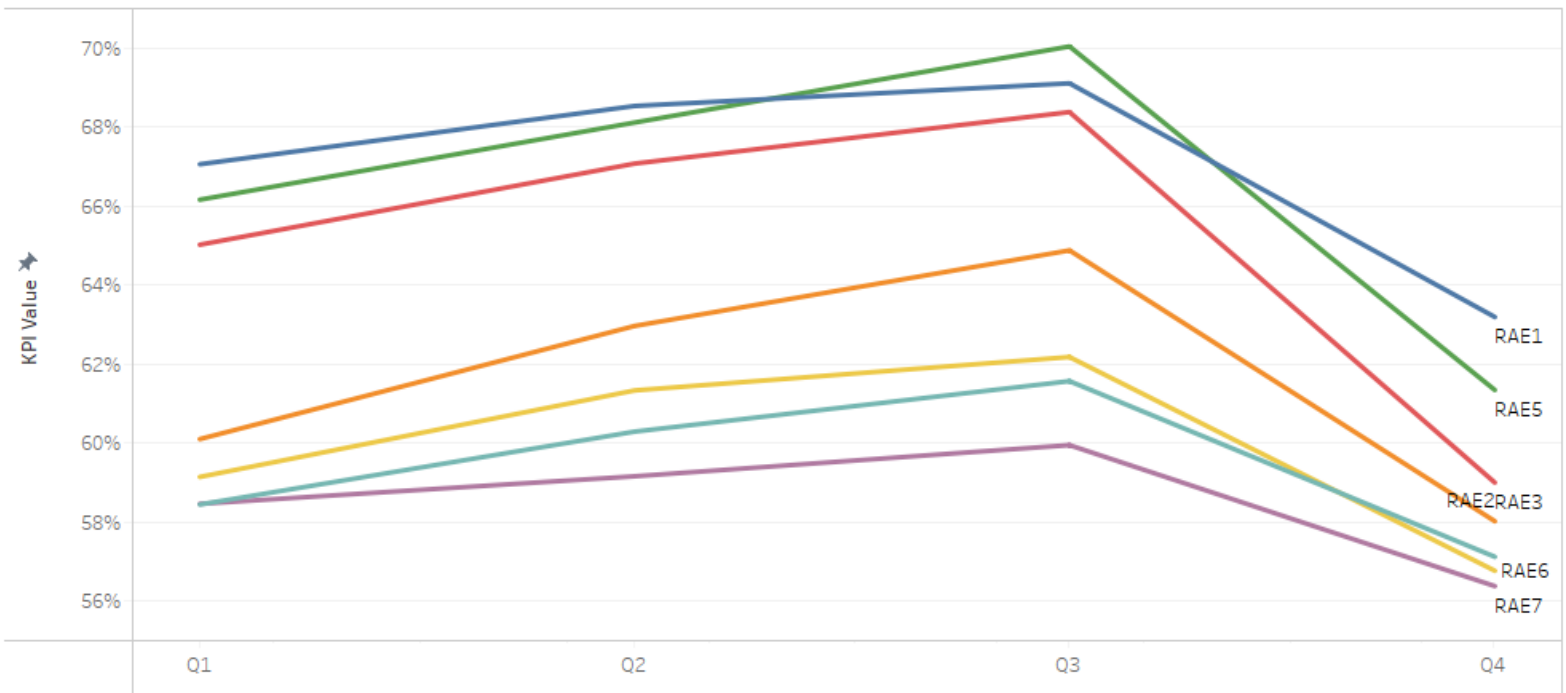
## Child And Adolescent Well Visit Time Trend



RAE	FY 2022				Baseline	Target Met <span style="color: green;">■</span> Met Target Tier 2 <span style="color: red;">■</span> No Target Met
	Q1	Q2	Q3	Q4		
RAE1	42.07%	42.27%	40.71%	40.58%	38.90%	Met Target Tier 2
RAE2	35.66%	34.85%	33.73%	33.96%	34.60%	No Target Met
RAE3	45.40%	44.69%	43.01%	42.08%	41.30%	Met Target Tier 2
RAE4	36.97%	37.74%	36.71%	36.48%	31.00%	Met Target Tier 2
RAE5	51.78%	51.04%	49.55%	49.17%	47.20%	Met Target Tier 2
RAE6	42.33%	41.99%	40.77%	40.08%	37.90%	No Target Met
RAE7	35.97%	35.93%	34.62%	34.03%	33.80%	No Target Met



# Well Child Visit 0-15 Months

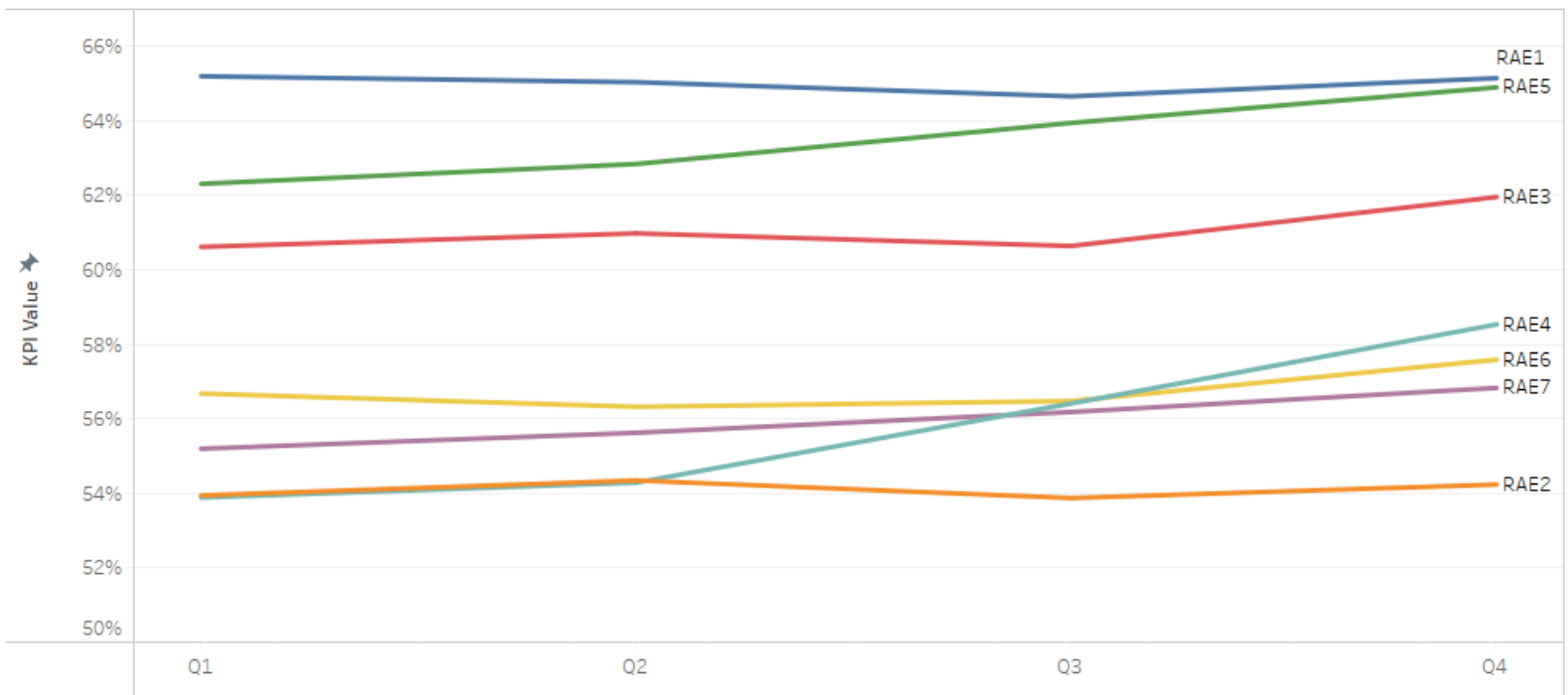


	Q1	Q2	Q3	Q4	WCV 0-15 Baseline	Target Met
RAE1	67.06%	68.53%	69.11%	63.19%	56.80%	Met Target Tier 2
RAE2	60.10%	62.97%	64.88%	58.02%	53.70%	No Target Met
RAE3	65.02%	67.08%	68.38%	59.00%	52.80%	Met Target Tier 2
RAE4	58.45%	60.29%	61.57%	57.12%	51.80%	No Target Met
RAE5	66.16%	68.12%	70.04%	61.34%	55.30%	Met Target Tier 2
RAE6	59.14%	61.33%	62.18%	56.77%	49.60%	No Target Met
RAE7	58.46%	59.16%	59.95%	56.38%	58.90%	No Target Met





## Well Child Visits 15-30 Months



	FY 2022				WCV 15-30 Baseline	Target Met <span style="color: green;">■</span> Met Target Tier 2 <span style="color: red;">■</span> No Target Met
	Q1	Q2	Q3	Q4		
RAE1	65.20%	65.04%	64.66%	65.15%	63.70%	
RAE2	53.94%	54.35%	53.87%	54.23%	55.10%	
RAE3	60.62%	60.98%	60.64%	61.96%	58.70%	
RAE4	53.89%	54.29%	56.41%	58.54%	55.90%	
RAE5	62.31%	62.84%	63.95%	64.90%	63.20%	
RAE6	56.68%	56.32%	56.48%	57.59%	56.40%	
RAE7	55.20%	55.63%	56.18%	56.83%	56.20%	





# Questions?



# Contact Info

**Matthew Lanphier**

Enrollment Operations and Analytics  
Unit Supervisor

[Matthew.Lanphier@state.co.us](mailto:Matthew.Lanphier@state.co.us)



**COLORADO**

Department of Health Care  
Policy & Financing

# Thank you!



**COLORADO**

Department of Health Care  
Policy & Financing