

# Hospital Transformation Program Newsletter



**COLORADO**  
Department of Health Care Policy & Financing

Hello HTP Stakeholders,

Welcome to the August 2022 edition of the Hospital Transformation Program (HTP) newsletter. We just concluded our first Interim Activity and Community and Health Neighborhood Engagement (CHNE). The reporting period for the quarter that ended in June, and I'm happy to say that all HTP hospitals submitted their reports by the deadline! Our teams will be scoring throughout the rest of this month. This month we have a few important updates, as always, some great resources, highlights, and opportunities for you including an 11-part social determinants learning series offered to hospitals by CHA, and a community reinvestment program from Health Colorado. Thanks for reading!

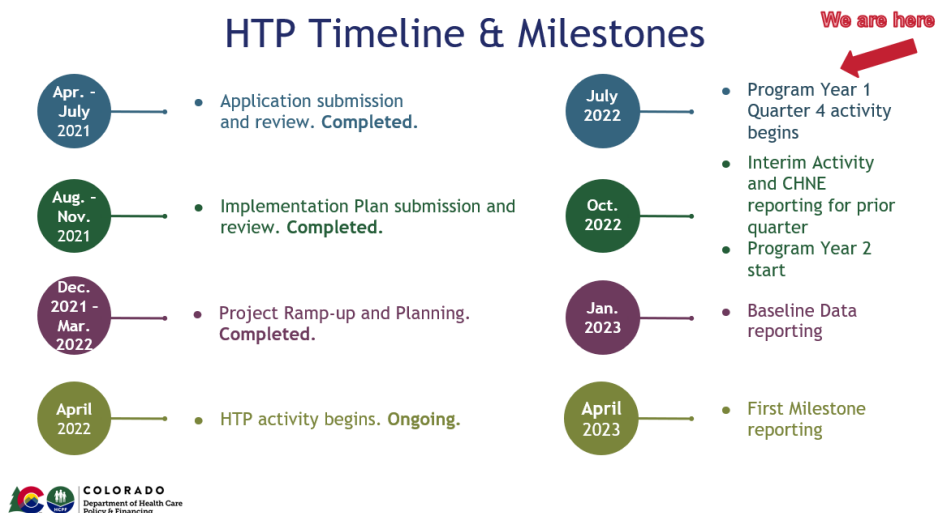


Thank you,

**Matt Haynes**  
Special Finance Projects Manager

## HTP Timeline

### HTP Timeline & Milestones



## Hospital Index Dashboard

The Hospital Index dashboard has been refreshed with risk-adjusted data for procedural episodes that occurred between Jan. 1, 2019, and Dec. 31, 2020. The dashboard contains the hospital index scores that were calculated using peer group benchmarks. The dashboard contains the same look and feel as maintained in previous years, with a few additions to filtering selections and other minor data elements. A guideline to the Hospital Index dashboard is under the 'Tools and Resources' on the [HTP website](#).

If you have any questions please email them to [HCPF\\_Prometheus@state.co.us](mailto:HCPF_Prometheus@state.co.us). Further, there are office hours regularly held on the last Friday of each month to help with any technical assistance.

---

## HTP Website Updates

The [HTP web pages](#) have a new and improved look and feel that we believe makes navigating and finding information easier for visitors to the site. For those active in the program, the main page gives easy access to important program documents such as 'Tools and Resources', 'Measures and Framework Documents,' 'Community and Health Neighborhood Engagement (CHNE)' documents, and recorded trainings.

There is also a link to a new [HTP 101 page](#). This page gives a higher-level overview and some program history for folks that are looking for a more general understanding of the program.

---

## Hospital Workgroups

The next Hospital Workgroup meeting is scheduled for **July 21, 2022, at 10 a.m.** Agenda items include a continued discussion about program progress, FAQs, learning symposium and hospital reporting on interim activities and CHNE.

---

## Rural Support Fund

This is a reminder to those hospitals that have not yet completed and submitted the attestation form for program year 2 of the Rural Support Supplemental Payment Program (RSSPP). **The due date for the attestation is today, Friday, Aug. 5, 2022.**

It should include a narrative that describes how the funds from program year 1 were used (questions one through three on page four of the attestation form) and how the funds are expected to be used for program year 2 (question four). If you have any questions, please email Riley De Valois at [Riley.DeValois@state.co.us](mailto:Riley.DeValois@state.co.us)

For more information, go to the [Rural Support Fund webpage](#).

## CHA Social Determinates Learning Series

CHA is pleased to announce a new learning series designed to equip hospitals with the knowledge and tools they need to strategically address social determinants of health (SDoH) and improve health equity in Colorado.

The series, [Fundamentals of Social Determinants of Health in Hospitals: Improving Health Equity Across Colorado](#), will convene hospitals from around the state to provide insight on contributors to SDoH and lay the foundation for future work aimed at addressing health disparities in the state. Participants will gain an understanding of the opportunity to improve health equity in hospitals and leave with action-oriented tools to make a difference in their organizations.

With an increasing focus on SDoH principles from the Centers for Medicare and Medicaid Services (CMS) and many components of the state's Hospital Transformation Program (HTP) and Hospital Quality Incentive Payment (HQIP) program, now is the time for hospitals to come together and engage around these critically important topics. This 11-session virtual learning series includes a mix of keynote presentations from industry experts, panel discussions from hospital and health equity leaders, and breakout sessions to support building an equity-focused network in Colorado. All sessions will be recorded and made available to series participants.

[Register here.](#)

We look forward to your participation! Please do not hesitate to reach out with any questions.

---

## Health Colorado Inc. (HCI) Fall 2022 Community Reinvestment Program

RAE 4 Health Neighborhood and Community Partners! Health Colorado Inc. (HCI) is accepting proposals for the Fall 2022 Community Reinvestment Program through **Aug. 19, 2022**.

Developed in line with our commitment to supporting and reinvesting funds in community programs, the HCI Community Reinvestment Program supports community-oriented, and innovative projects that improve the overall health, wellness and experience of Health First Colorado (Colorado's Medicaid Program) members across the region. The Community Reinvestment Program is funded using incentive payments HCI earned for achieving Behavioral Health Incentive Program (BHIP), Key Performance Indicators (KPIs), and the Performance Pool set by the Colorado Department of Health Care Policy and Financing (HCPF).

**Q&A Session with HCI: Aug. 5, 2022 from 8:30-9 a.m. MT**

Link: [Zoom](#)

Meeting ID: 867 0966 8735

Passcode: 815216

**Proposal Submission Deadline: Aug. 19, 2022 @ 5 p.m. MT\***

Interested organizations will complete Section(s) I, II and III of the [application](#) and submit them to [christina@healthcolorado.health](mailto:christina@healthcolorado.health).

---

## Telligen Learning Assets and Support

In Case You Missed It: the [Telligen QIN-QIO](#) has no-cost [Learning Assets](#) to offer that are in direct alignment with many of your HTP measures and interventions.

If you have a specific request for technical assistance related to evidence-based interventions, coalition building/strengthening, data and/or quality improvement training, you can [submit a request](#).

---

## Community Engagement Resource

The Assessing Community Engagement project from the National Academy of Medicine (NAM) [Leadership Consortium: Collaboration for a Value & Science-Driven Health System](#) is funded by the Robert Wood Johnson Foundation. Guided by a committee of national and community leaders that reflect diverse backgrounds and perspectives, the project aims to provide community-engaged, effective, and evidence-based tools to those who want to measure engagement to ensure that it is meaningful and impactful, with a special emphasis on ensuring equity as a critical input and outcome. As part of this effort, the Organizing Committee developed the [Assessing Community Engagement Conceptual Model \(ACE-CoM\)](#), which identifies outcomes associated with meaningful community engagement. More information is on their [website](#).

Thanks to the Community Advisory Council (CAC) for sharing this resource.

---

## Regional Health Connector (RHC) Program

Regional Health Connector (RHC) program! In 2021, the RHC program received funding from [Senate Bill 21-137](#) to improve mental and behavioral health systems across the state of Colorado. Each RHC conducted regional assessments by analyzing national, state, and local data to identify priority gaps in behavioral and mental health services. Based on this data, RHCs proposed projects intended to address these priority gaps and improve health equity using local knowledge, services, and assets. Trailhead Institute

shares a summary of the Behavioral Health Recovery Act (BHRA) projects that resulted from this funding and process. Also featured are two stories of impact that illustrate how the BHRA funding was utilized: [Culture as Prevention in Southwest Colorado](#) and [Building Bridges to Muslim Youth for Positive Impact](#).

As a partner/advocate/supporter, The Trailhead Institute encourages you to:

- Read through the summary available on their [website](#) along with, stories, and their newsletter, and share it in your networks
- Connect with RHCs directly to learn more about their local projects and discover how efforts can align

Reach out to RHC program staff (Gillian Grant & Hannah Groves) or register for an upcoming informational session to learn more about the program and how you can advocate for and support the RHCs.

---

### Colorado AIM Substance Use Disorder Learning Collaborative

Improve birth outcomes while boosting your HTP and HQIP performance! The Colorado Perinatal Care Quality Collaborative (CPCQC) is recruiting new clinical teams and patients with lived experience - especially in the southern and eastern parts of Colorado!

Want to improve care for pregnant and postpartum people with substance use disorder, depression, and anxiety? Join CPCQC's [Colorado AIM: Substance Use Disorder Learning Collaborative](#). This QI learning collaborative can boost your team's performance if you've chosen measures on HTP related to screening and referral for perinatal depression and anxiety, social needs screening and notification, or discharge planning with RAE notification for mental illness or SUD. This opportunity is also open to outpatient clinics serving pregnant or postpartum people! Please pass the opportunity along to any outpatient clinics you may know.

Want to reduce neonatal complications, especially if you chose that measure for HTP? Join CPCQC's NICU quality improvement programs: [CHoSEN](#) or [DEFINE](#).

Want to reduce first-time, low-risk (NTSV) Cesarean sections, especially if you are working on the **HQIP Cesarean Section Measure**? Join CPCQC's [SOAR initiative](#). CPCQC would also love to recruit additional patients and family members with lived experience to inform our patient-centered programs. These can be patients or their loved ones with lived experience of Cesarean, birth trauma, SUD, perinatal mood and anxiety disorders, racism or just someone who has experienced birth first or secondhand and is passionate about improving outcomes.

The southern and eastern areas of Colorado are particularly underrepresented in CPCQC programs, so be sure to pass this along to clinical teams or patients in those areas.

If you're interested in any of the above, please email [info@cpcqc.org](mailto:info@cpcqc.org) for more info!

---

### Public Dashboard

The Collaboration, Performance and Analytics System (CPAS) hospitals will be using for HTP has a public dashboard that stakeholders can access to view each participating hospital's measures and interventions. The information is sortable and can be exported into Microsoft Excel. This is a nice tool for exploring all the interventions that the hospitals will be implementing and the measures that the interventions are focused on. Go to the new [dashboard](#).

---

**In case you missed the HCPF Stakeholder Webinar:**

Thank you to the 1,000+ registrants who joined Lt. Governor Primavera and Department of Health Care Policy and Financing leaders for the Annual Stakeholder Webinar on July 19. Access the [recordings and materials from the webinar](#).

We value the participation and feedback of policy makers, advocates, payers, care providers, staff, health care leaders and other industry stakeholders. In that spirit, this webinar is an important forum to gather feedback from stakeholders like you. Below is key feedback from our webinar polls:

- **Big boulders you're most excited about:** 33% said behavioral health transformation while 15% answered Home and Community-Based Services (HCBS) transformation, followed by healthcare workforce growth (10%), health equity work (10%) and value-based payments (8%).
- **Big boulders you're most concerned about:** 38% answered healthcare workforce, 33% said the balance between inflation, provider rates, workforce access, Medicaid affordability and 22% were most concerned about continuous member coverage following the end of the PHE.
- **Most important HCPF pillar:** 35% said care access, 29% said affordability for all Coloradans, and 15% answered member health.
- **ACC III Participation:** 74% answered that they are likely to participate in ACC III stakeholder engagement opportunities.
- **Most important HCBS investment:** 34% said workforce and 20% said access for underserved populations, followed by case management redesign (13%) and quality outcomes (11%).

---

## Prescriber Tool

The Department will send an attestation form for the Prescriber Tool to hospitals in early fall. Hospitals will be asked to provide a hospital contact, their EHR vendor and a verification of real-time benefits inquiry for Medicaid members. Hospitals should attest to a verification of functionality and workflow processes, and if not functional, attest to submitting a ticket for their EHR vendor.

The Prescriber Tool helps Coloradans save money on health care by empowering providers with information on prescription drug costs and affordable alternatives. It reduces the administrative burden for providers, while also improving convenience for patients. Please contact your IT Support Staff, EHR Training Team or EHR vendor to access the “Real-Time Prescription Benefit” and get training and education materials.

For more information, please [visit our webpage](#) or contact [Lauren Hussey](#).

### Community Advisory Council

Community Advisory Council meetings continue to take place monthly to provide important perspective to the HTP as well as community awareness of and engagement with the program. The next meeting is **Aug. 15, 2022**. Agendas, materials and notes from previous meetings are on the [Community Advisory Council website](#).

### Colorado Healthcare Affordability and Sustainability Enterprise (CHASE) Board meeting

The next Colorado Healthcare Affordability and Sustainability Enterprise (CHASE) Board meeting will take place [via Zoom](#) (Passcode: 979618) on **Tuesday, Aug. 23 at 3 p.m.**

Additional information about the board, as well as meeting materials, are on the [CHASE Board website](#).

# Helpful Links & Program Contact

[HTP Communications  
archive](#)

[Community Advisory  
Council website](#)

[CHASE Board website](#)

[HTP website](#)

Email HTP Program  
Contact