

# Colorado SHS Program Highlights

★ Fiscal Year 2021-22 ★

The School Health Services (SHS) Program participants receive federal matching funds for the health services provided to public school students enrolled in Health First Colorado.



**COLORADO**  
School Health Services Program

**81**

School districts participating in CO's SHS Program

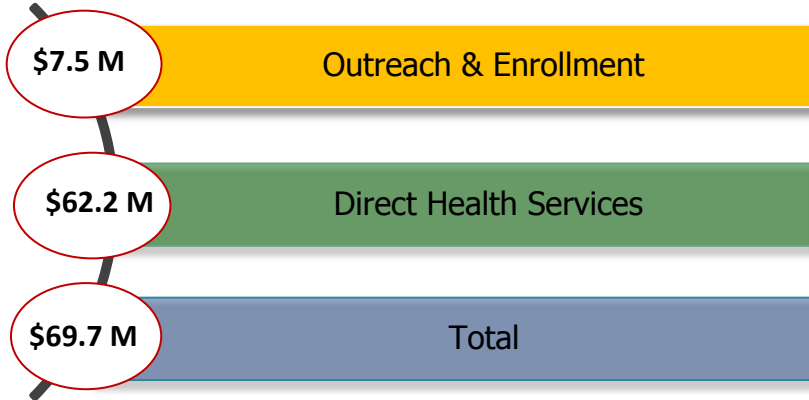


Over **84%** of total student population in CO

Types of services reimbursed:

Physician · Nursing · Personal Care · Psychology, Counseling and Social Work · Speech Language and Hearing · Occupational Therapy · Physical Therapy · Specialized Transportation

## SHS Program Reimbursement Dollars Received in Fiscal Year 2021-22 by School Districts



## Top State Spending Priorities



Mental Health Services



Nursing Services



Special Services Providers



Case Management for Student and Family Care Coordination

## HOW COLORADO SCHOOL DISTRICTS USED THEIR REIMBURSEMENT DOLLARS

Participating districts are required to develop a Local Services Plan based on community input to determine priorities and how funds will be allocated to health services to all students in the school district

### 925 Full Time Staff Supported by the SHS Program



- ✓ Outreach & Enrollment Specialists
- ✓ Special Service Providers
- ✓ School Psychologists
- ✓ Nurses

### \$3.2 Million on Health-Related Equipment, Materials, & Supplies

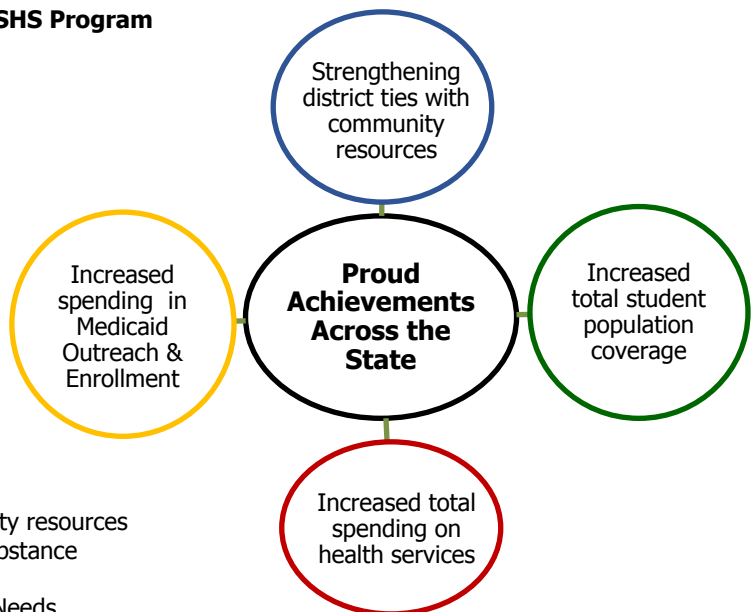


- ✓ Health Clinic supplies
- ✓ Repairs or replacement costs for diagnostic equipment
- ✓ Training-related materials & supplies
- ✓ Assistive technology for students

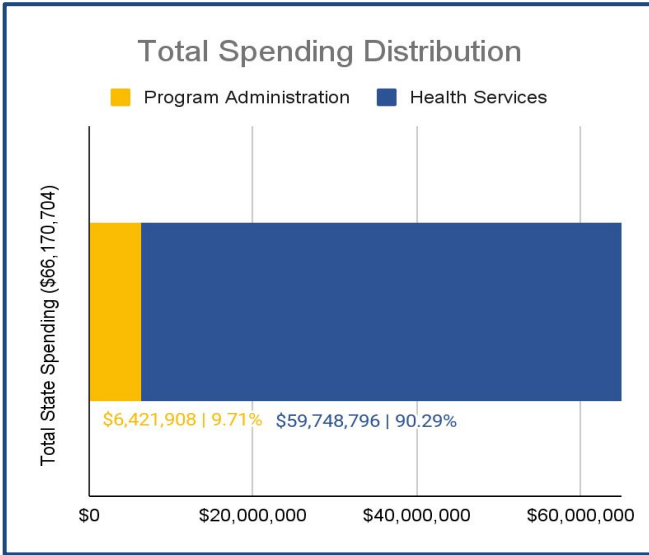
### \$16.7 Million on Mental, Social & Emotional Health



- ✓ Vouchers increasing access to community resources
- ✓ Trainings including crisis prevention, substance abuse, life skills, and suicide prevention
- ✓ Care Coordination for social/emotional Needs



# Reimbursement Spending Report State Data Overview



## Data Charts on this page

(Left) Total spending on costs relating to administering the program and costs relating to providing health services.

(Below) District/BOCES spending and FTE count by health service category.

(Bottom of Page) Total historical spending by districts/BOCES over a 10-year period.

