

# Direct Care Workforce Collaborative

A Stakeholder-Led Initiative to Help  
Stabilize the Direct Care Workforce

Friday, December 17, 2021  
11:00 AM - 12:00 PM



**COLORADO**

Department of Health Care  
Policy & Financing

# Attendance



If you are online, please use the [Online Attendance Link](#) that you will find in the CHAT to let us know you are here.



Press the microphone icon to unmute/mute yourself. If you have a question or comment, utilize the Q&A or Chat Box at the bottom of your screen.



- To be added to our communications list, email [HCPF\\_DCWorkforce@state.co.us](mailto:HCPF_DCWorkforce@state.co.us) (include your phone number).
- If you don't have email or internet access, please call (303) 866-3504 to provide your mailing address.
- Requests for accommodations can be sent to the meeting organizer or [John.R.Barry@state.co.us](mailto:John.R.Barry@state.co.us)

# Today's Agenda

Topic	Presenter/s	Time
Welcome, Attendance, Introductions, Agenda	Jessica Boyer	11:00-11:05
Breakout Rooms <ul style="list-style-type: none"><li>● Collaborative Overview</li><li>● Collaborative Leadership Opportunities</li><li>● American Rescue Plan Act Initiatives</li><li>● Advocacy Opportunities</li><li>● First Year Reflections</li></ul>	HCPF Staff & Action Group Chairs	11:05-11:55
Closing	Jessica Boyer	11:55-12:00



**COLORADO**

Department of Health Care  
Policy & Financing

# Introductions

## Facilitation

Jessica Boyer, Office of Community Living, HCPF - [jessica.boyer@state.co.us](mailto:jessica.boyer@state.co.us)

## State Support Team

Hayley Gleason - Strategic Outcomes Division Director, Office of Community Living, HCPF - [hayley.gleason@state.co.us](mailto:hayley.gleason@state.co.us)

Erin Thatcher - Participant Directed Programs Supervisor, Office of Community Living, HCPF - [erin.thatcher@state.co.us](mailto:erin.thatcher@state.co.us)

Jessica Corral - Participant Directed Programs Contract Specialist, Office of Community Living, HCPF - [jessica.corral@state.co.us](mailto:jessica.corral@state.co.us)

Candace Bailey - Community Options Benefits Section Manager, Office of Community Living, HCPF - [candace.bailey@state.co.us](mailto:candace.bailey@state.co.us)

Alicia Ethredge - Service, Development and Evaluation Manager, Office of Community Living, HCPF - [alicia.ethredge@state.co.us](mailto:alicia.ethredge@state.co.us)

Jessica Boyer - Workforce and Sustainability Specialist, Office of Community Living, HCPF - [jessica.boyer@state.co.us](mailto:jessica.boyer@state.co.us)



**COLORADO**

Department of Health Care  
Policy & Financing

# Collaborative Leadership & Action Groups

## Collaborative Co-Chairs

Penny Whitney - LTC consultant, Aponi Partners, Inc.

Kim Watson, NHA, RN, ODPC - VP, Consulting Services, Health Dimensions Group

## Action Group Chairs

### **Training & Career Advancement**

Kristie Braaten - Senior Director, Developmental Disabilities Resource Center

### **Compensation & Benefits**

Angela Mulcahy, LPI, RN, BSN - Owner, AM Health, LLC

Liliana Moon - Business Services Representative, Workforce Boulder County

### **Value & Awareness**

Hope Carwile - Innovations Specialist, VIVAGE Senior Living

Pascale Adou - Healthcare External Organizer, SEIU Local 105



**COLORADO**

Department of Health Care  
Policy & Financing



# Breakout Rooms



# Breakout Rooms

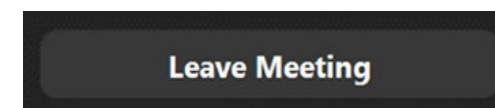
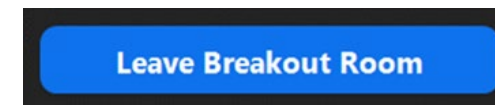
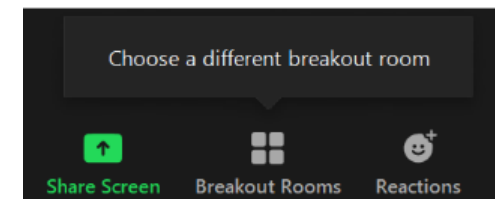
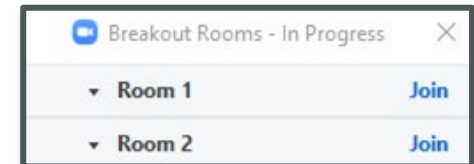
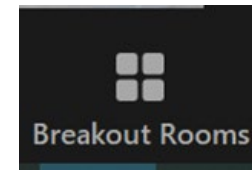
*Please choose the room that you would like to participate in. For online participants, you may switch rooms if you would like.*

- 1 - Collaborative Overview
  - Jessica Corral, Angela Mulcahy
- 2 - Collaborative Leadership Opportunities
  - Jessica Boyer, Lili Moon
- 3 - American Rescue Plan Act
  - Candace Bailey, Kristie Braaten
- 4 - Advocacy and Legislative Opportunities
  - Hayley Gleason, Pascale Adou
- 5 - First Year Reflections
  - Hope Carwile, Penny Whitney



# Getting In & Out of Breakout Rooms

- Click on **Breakout Rooms** icon at the bottom of your screen
- Click **Join** next to the room you would like to join
- Once in a breakout room you can move to another room by clicking on the **Breakout Rooms** icon and click to join a different room
- To return to the main room, click the blue **Leave Breakout Room** button
- To leave the meeting entirely, click the gray **Leave Meeting** button





# Closing

- Next Steps
- 60-second Survey



# Next Collaborative Meeting



**Wednesday  
February 9, 2022  
10:00 - 11:30 am**

**Meeting Topic:  
TBD**

Information about the February meeting  
will be shared on our website in the  
month of January:  
[hcpf.colorado.gov/direct-care-workforce-  
collaborative](https://hcpf.colorado.gov/direct-care-workforce-collaborative)

**Email:**  
[HCPF\\_DCWorkforce@state.co.us](mailto:HCPF_DCWorkforce@state.co.us)



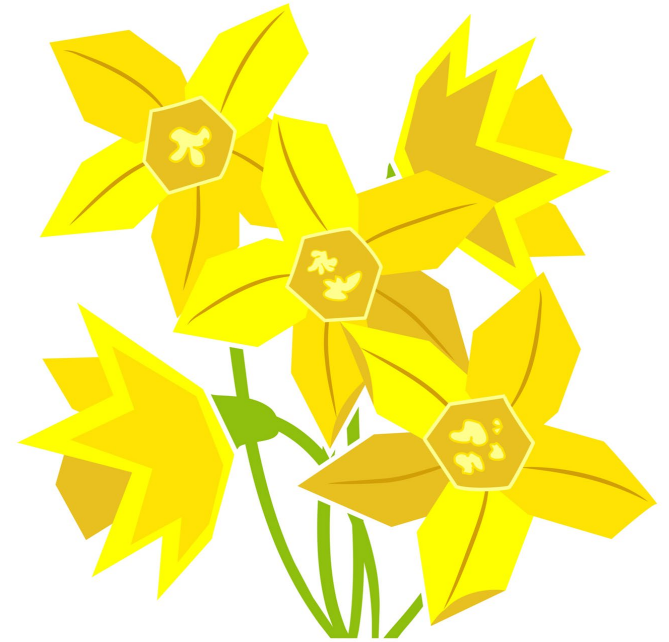
**JOIN US**

**Be a member of our  
Action Groups  
[Sign Up Here](#)**



# Before you leave...

Please take 60  
seconds to  
complete this  
survey



*Thank You*

