

COVID-19 Updates

Colorado Department of Health Care Policy & Financing

May 1, 2020

Overview

Executive Director Update

- Kim Bimestefer, Executive Director, HCPF

Colorado Department of Public Health & Environment (CDPHE) Update

- Greg Schlosser, Branch Chief, CDPHE

EMResource Update

- Dr. Jeff Beckman, Medical Director for Health Facilities & EMS Division, CDPHE

Residential Strike Force Update

LTC Frontline Staff Training Webinars

Connect to Care

Guidance Preview & Review

- Bonnie Silva, Office of Community Living Director, HCPF

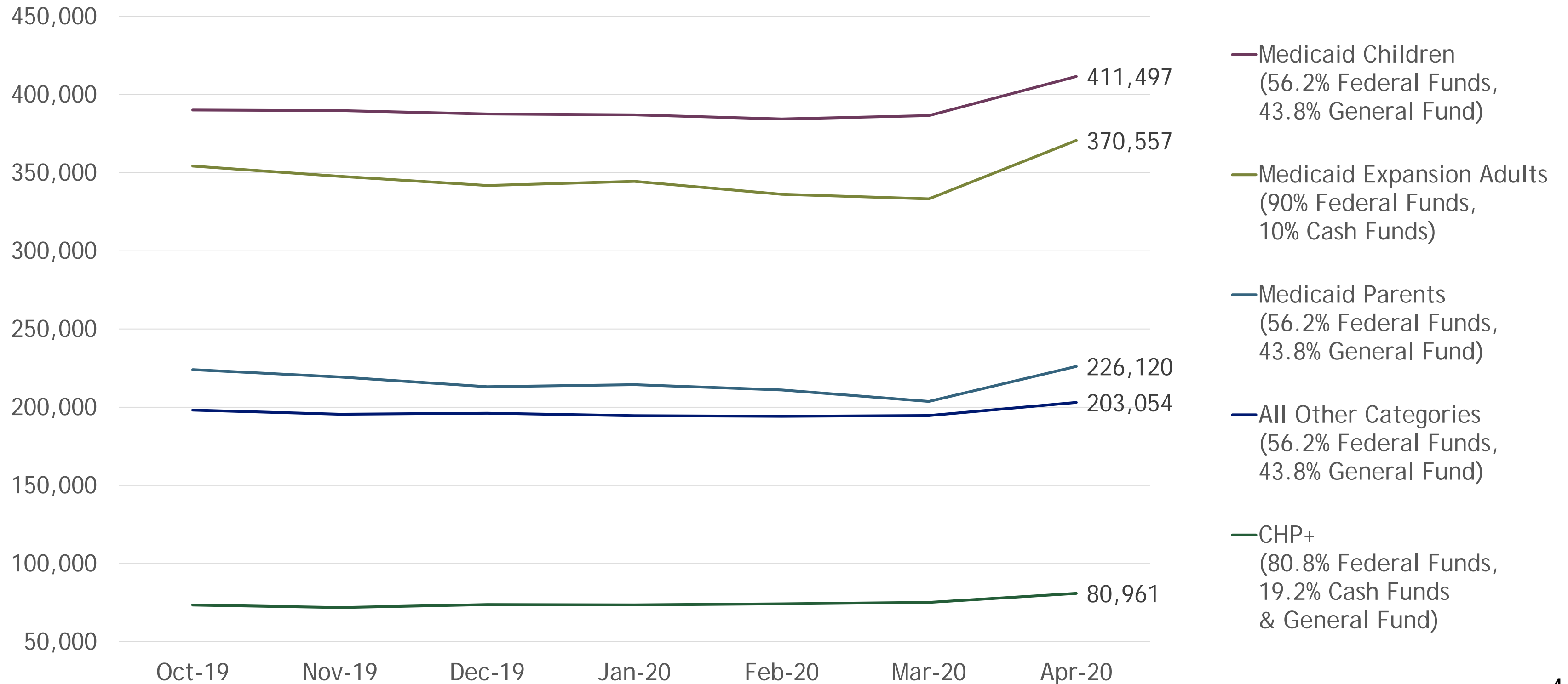
Executive Director Update

- Updated Membership Surge Forecast
- Provider Recruitment
- New Enrollee Assumptions
- FMAP by Eligibility Class
- Stimulus, Budget Discussion, Timing
- Title VII SCOTUS Decision
- Questions

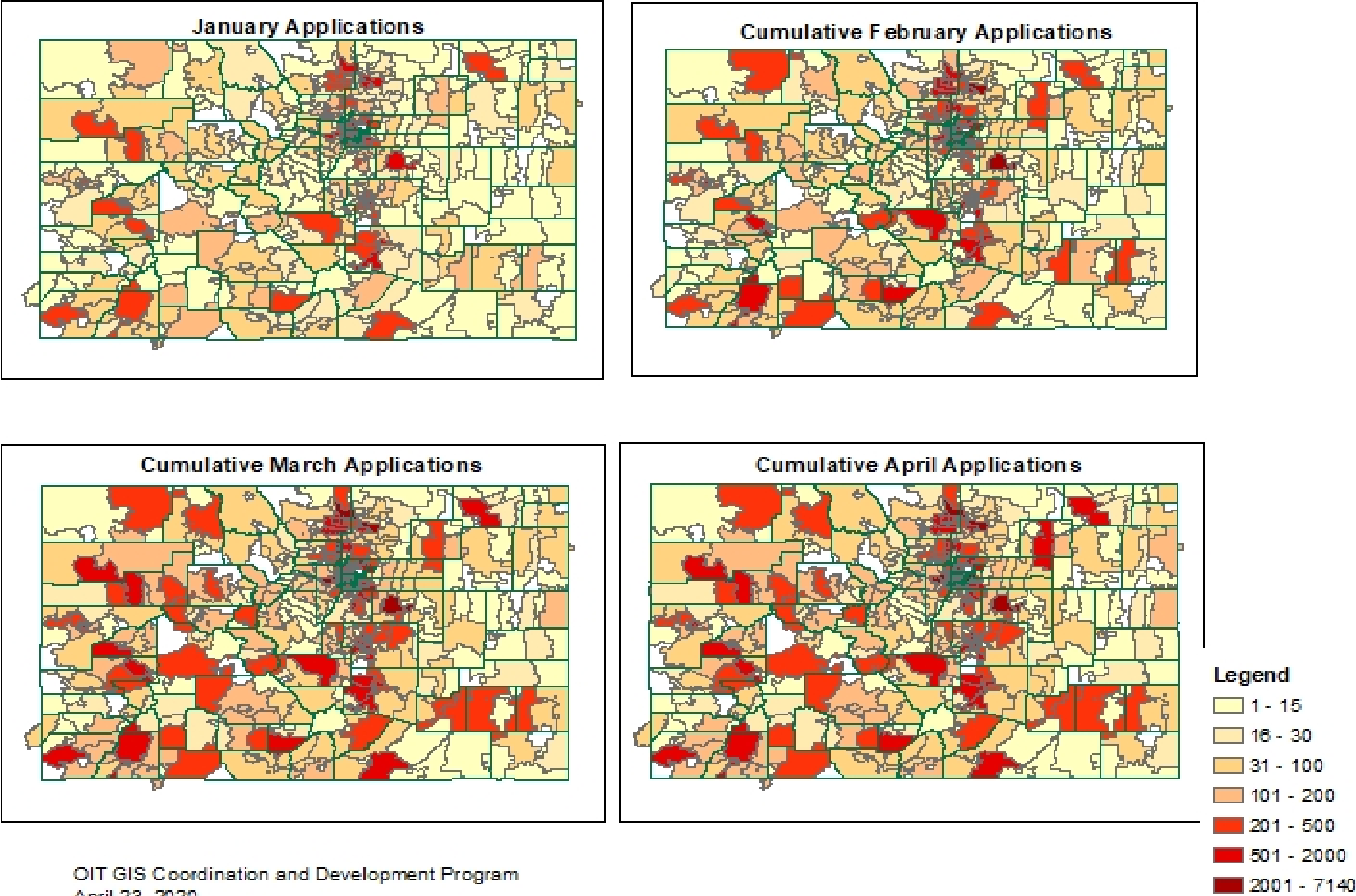
Medicaid Category Enrollment

Enrollments and composition over time

Medicaid & CHP+ Eligibility



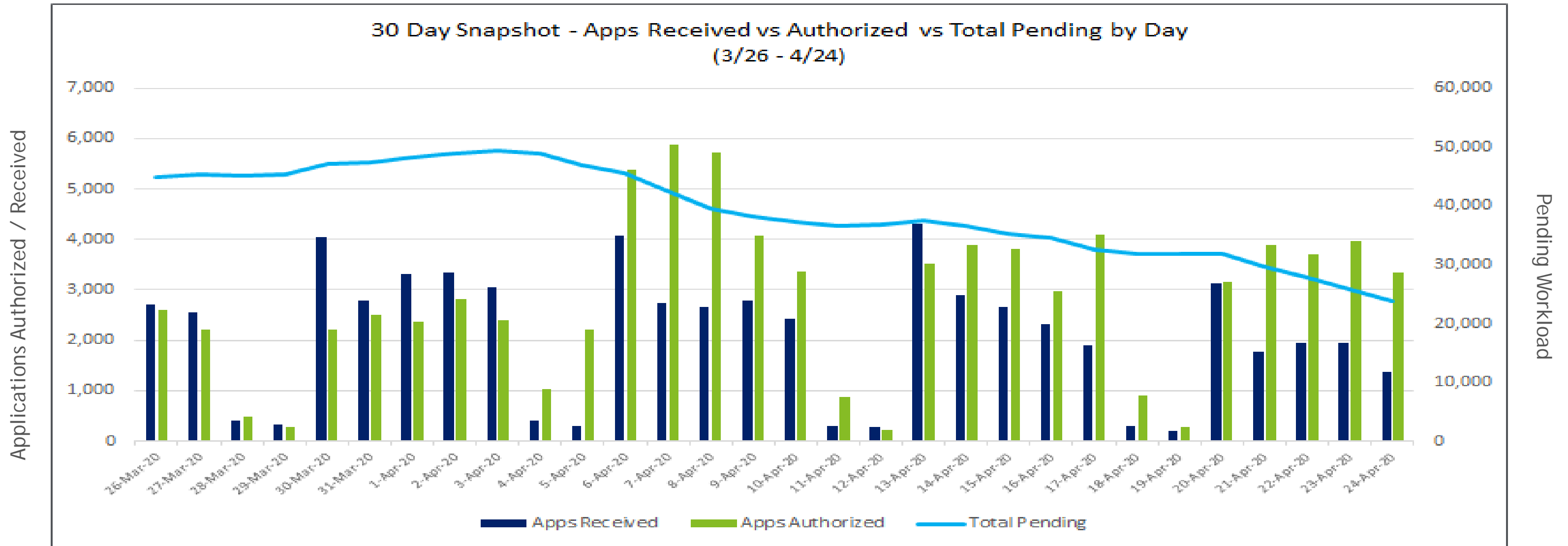
Cumulative Monthly CBMS Applications by Zip Code
Submitted Jan-Mar 2020



OIT GIS Coordination and Development Program
April 23, 2020

Snapshot of Application Processing

Applications increasing; processing increasing more

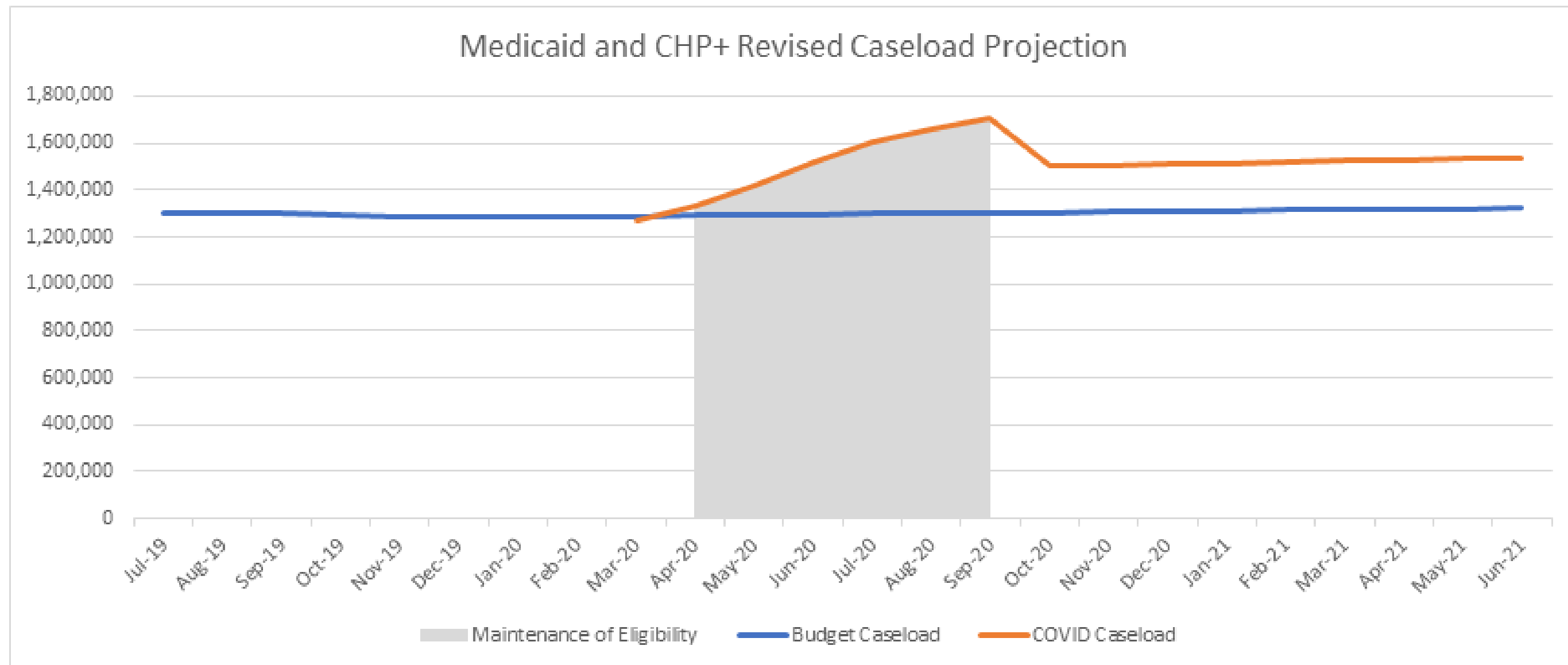


Value Definitions

- **Apps Received** - includes all applications received through PEAK and all applications started by an eligibility worker in CBMS
- **Apps Authorized** - Means a determination of eligible or denied has been made on the application
- **Total Pending** - all applications received that have not yet had a determination made
- **NOTE:** This includes both HCPF and CDHS Applications.

Updated Medicaid, CHP+ Membership Surge Forecast

- Membership surge of about 437,000 Coloradans between April 1 and September 30, reflecting a 35% increase to the 1.3M members covered in Medicaid and CHP+ as of March 2020.
- Once the public emergency period ends, we project an estimated disenrollment of 240,000 members who do not meet eligibility criteria after maintenance of effort ends.
- Net surge of 287,000 members, 23% increase during FY 2020-21 compared to March 2020.
- This net membership surge represents an increase of 243,000 members over the most recent budget forecast.



Help Us Recruit More Medicaid Providers

With a 400k expected surge in Medicaid enrollees - *coming from commercial insurance* - providers should enroll in Medicaid to protect patient share and revenue

How providers enroll with Health First Colorado (CO Medicaid)

- ☐ Click on the [Web Portal](#) button on the [Department's website](#) to begin an enrollment application
- ☐ Choose the provider type of "ordering, prescribing, or referring" for practitioners working in the hospital setting only (institutional billing), or choose "individual within a group" if the physician has a clinic NPI (professional billing)
- ☐ Need copy of the practitioner's NPI, license, SSN, address, malpractice insurance for application
- ☐ Applications can be submitted in as little as 30 minutes
- ☐ Once submitted, app processed in as few as 5 days
- ☐ Applicants will receive an email on approval or outstanding items that need to be sent
- ☐ Contact the Provider Services Call Center at 1-844-235-2387 for questions on how to complete the application
- ☐ [Our Provider Enrollment Webpage](#) for more info

New Enrollee Assumptions

- Likely coming from employer coverage without pent up demand, healthier.
- FY 2020-2021 - will cost 75% of the Acute Care costs (hospital, physician, Rx, etc.) associated with current enrollees and 44% of the overall average cost of Medicaid current enrollees (due to the absence of these new members needing HCBS services) in FY 2020-21.
- Cost is even lower in FY 2019-20 at 50% of the Acute Care cost of current enrollees and 34% of the overall average cost of Medicaid enrollees because it takes time for appointments to be made and claims to be paid for new enrollees, as explained in the comments above.

Understanding Budget Impacts: Medicaid enrollees have different funding sources

Funding Breakout

Children & Parents

Earning
<60% FPL
570,700



STATE Approximately 50% of the funding to cover children is paid for by the State General Fund which is approximately \$850,703,392.

FEDERAL The other 50% comes from federal matching funds which is approximately \$850,703,391. In addition, parents who make up to 60% of the FPL receive the same 50% matching rate to fund their coverage.

Temporary
COVID-19
Enhanced Federal
Matching*

**INCREASES
BY 6.2% TO
56.2%** of the
total cost of
coverage.

People with Disabilities

89,982



STATE Approximately 50% of the funding to cover people with disabilities is paid for by the State General Fund which is approximately \$1,317,020,268. The State also uses approximately \$51,084,502 of the Healthcare Affordability and Sustainability Fee Cash Fund's for these population.

FEDERAL The other 50% of the funding for their coverage comes from federal matching funds which is approximately \$1,368,104,770.

Temporary
COVID-19
Enhanced Federal
Matching*

**INCREASES
BY 6.2% TO
56.2%** of the
total cost of
coverage.

Adults without Children & Parents

Earning
>60% FPL
379,019



STATE No General Fund is used for these populations. The State uses approximately \$176,386,643 Healthcare Affordability and Sustainability Fee Cash Fund is used for these populations.

FEDERAL Federal funds pay 90%, approximately \$1,587,479,783, of the cost for adults without children and parents earning 60% to 133% FPL (populations coverage was expanded to under the Affordable Care Act). Hospital provider fees pay the remaining share of the funding.

**ZERO
CHANGE**
Federal funds
stay at 90%.
Enhanced
federal funds
do not apply
to these
populations.

Older Adults

Age 65
& Older
48,124



STATE Approximately 50% of the funding to cover older adults is paid for by the State's General Fund which is approximately \$766,125,741.

FEDERAL The other 50% of the funding for their coverage comes from federal matching funds which is approximately \$766,125,741.

**INCREASES
BY 6.2% TO
56.2%** of the
total cost of
coverage.

For more information, visit [Colorado.gov/hcpf](https://colorado.gov/hcpf).

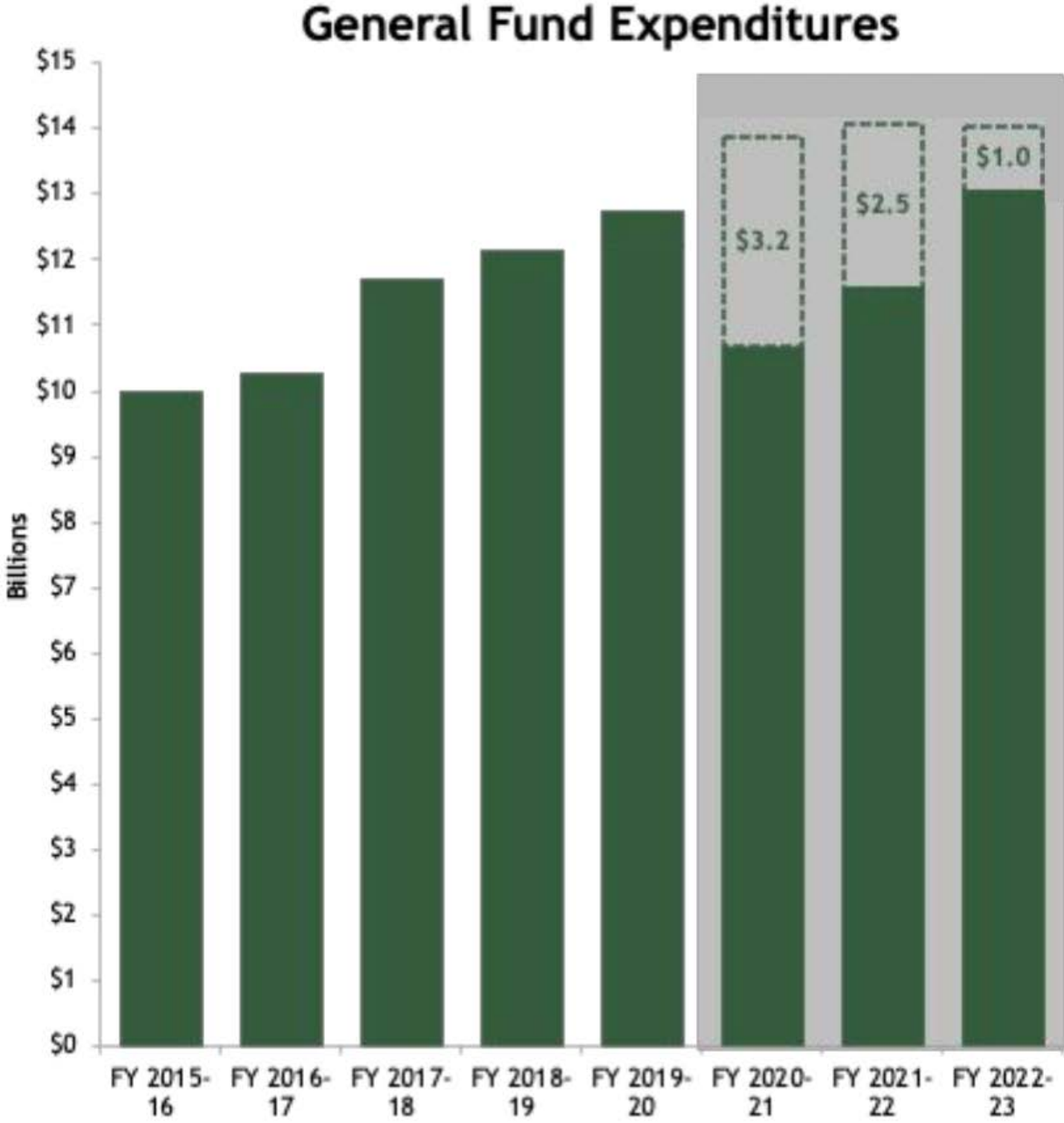
Yellow = State General Fund or other funds

Green = Federal Funding

*The duration of the national emergency is determined by the federal government.

CHP+ will also have a Temporary COVID-19 Enhanced Federal Match, federal matching rate increases to 80.84% from 76.5%.

Multi Year Fiscal Challenge



*Estimate assumes steep drop in revenue, then gradual build back.

*Estimate is very rough, and **does not** represent a forecast update.

Reversion \$\$ from HCPF

- Cost: Emergency Payments
- Cost: Maintenance of Effort for CHP+
- Savings: 6.2 points of FMAP Stimulus receive in 2019-2020 to 2020-2021
- Savings: Offsets Due to Utilization Decrease
 - Reduction in utilization due to
 - "Stay/Safer at Home" Orders
 - Patient/Consumer fear of COVID19 infection/spread

Total Reversion to General Fund HCPF Target - \$180+ Million

Recent Congressional Actions - New \$ will not be enough to address growing needs and funding shortfalls...

- \$2.3 Trillion CARES Act Passed, Families First Coronavirus Response Act Passed (6.2pt FMAP increase)
- Senate & House Passed Paycheck Protection Program and Health Care Enhancement Act ([H.R. 266](#)) - \$484B Legislation: \$75B for Hospitals, \$25B for COVID testing, replenishes \$300+B into Paycheck Protection Program, and includes additional funds to support small businesses.
- HRSA has launched a portal for providers to seek reimbursement for the care of the uninsured with COVID diagnoses. More information is available [here](#).

GOAL: Please help us secure more \$\$ for the state!

Tough Decisions Ahead

HCPF Key Considerations

- ✓ Incorporate utilization declines before budget cuts
- ✓ Protect our most vulnerable – coverage and benefits
- ✓ Budget to Consensus Membership Surge/Average Projection
- ✓ Tier Budget Cuts – as needed
- ✓ Recognize Stimulus dollar recipients & every \$1 of Medicaid GF reduction **generates a loss of roughly \$2 in Federal Funds** to the state.
- ✓ Transparent, collaborative approach – together with our partners

Executive Order: OSPB to Submit Sequestration Plan to JBC & General Assembly

- This week, Gov. Polis signed Executive Order D 2020 050, restricting spending for the current fiscal year ending June 30, 2020. The Executive Order directs the Office of State Planning and Budgeting (OSPB) to submit the sequestration plan outlined in the Executive Order to the Joint Budget Committee and General Assembly.
- The sequestration plan set out in the Executive Order D2020 050 is a targeted and practical approach to reduce spending quickly by \$228.7 million to attempt to maintain the statutory reserve requirements directed by statute. It builds on OSPB's Guidance for Fiscal Conservation issued March 30, 2020 and does not rely on broad across-the-board cuts but rather specific line item reductions that can be made with the least possible impact to State programs and services. Importantly, the Executive Order does not mandate any furloughs or layoffs for State employees this fiscal year, and we want to ensure we have a strong, stable State workforce as we manage the challenges presented by the COVID-19 pandemic.
- Read the full Executive Order and OSPB plan [here](#).

Executive Order: Additional Funds to Nursing Homes

- Governor Polis also signed [Executive Order D 2020 054](#), directing the Department of Health Care Policy and Financing to provide additional funds to nursing homes and other congregate care facilities in response to COVID-19.

Timing – What's Next

- Difficult legislative decisions ahead
- Joint Budget Committee to start meeting on Monday, May 4 to consider changes to address projected shortfalls
- Updated revenue forecast scheduled for May 12, 2020
- General Assembly expected to reconvene and start on the Long Bill in the House the week of May 18, 2020
- Budget must be passed and signed into law by June 30, 2020
- As they become available, HCPF will post our projections, fact sheets and overviews on [Colorado.gov/hcpf/legislator-resource-center](https://colorado.gov/hcpf/legislator-resource-center)

Other HCPF Executive Director Updates

- HCPF service centers are still running at target performance
- Elective Procedures are beginning this week and next
 - PPE - Collaborate/Help Nursing Homes, ALFs as a priority
 - Help us understand emerging volume against limits (50/80%)
- Congregant Settings Strike Force (NH, ALF, Host Homes, Other)
- Alternate Care Sites Update
- Other

SCOTUS Pending Decision on Title VII

- On April 22, 2019, the US Supreme Court agreed to hear three cases testing the reach of Title VII of the federal Civil Rights Act in protecting LGBTQ Americans from discrimination in employment.
- The cases included *Altitude Express v. Zarda*, *Bostock v. Clay County, Georgia*, and *R.G. & G.R. Harris Funeral Homes v. EEOC and Aimee Stephens*.
- The Court heard oral arguments on all three cases on October 8, 2019 and is expected to announce a decision on the case in the near future.
- Seeking your collaboration.



COLORADO
Department of Public
Health & Environment

Update

- State Emergency Operations Center (SEOC)
- Survey Priorities
- Isolation Plan Submissions
- [HEMSD COVID-19 Blog](#)

EMResource

Setup

View

Other Regions

Event

Preferences

Form

Report

Regional Info

IM

User Links

Event Status

print

excel

refresh

help

Update 4: Colorado COVID-19 Healthcare_Update DAILY

Update 4: Colorado COVID-19 Healthcare_Update WEEKLY

Update 11: LTC/AL Resource Status Update

Denver Metro Hospital Rotation

Update 1: Colorado COVID-19_Tier II&III_Update DAILY

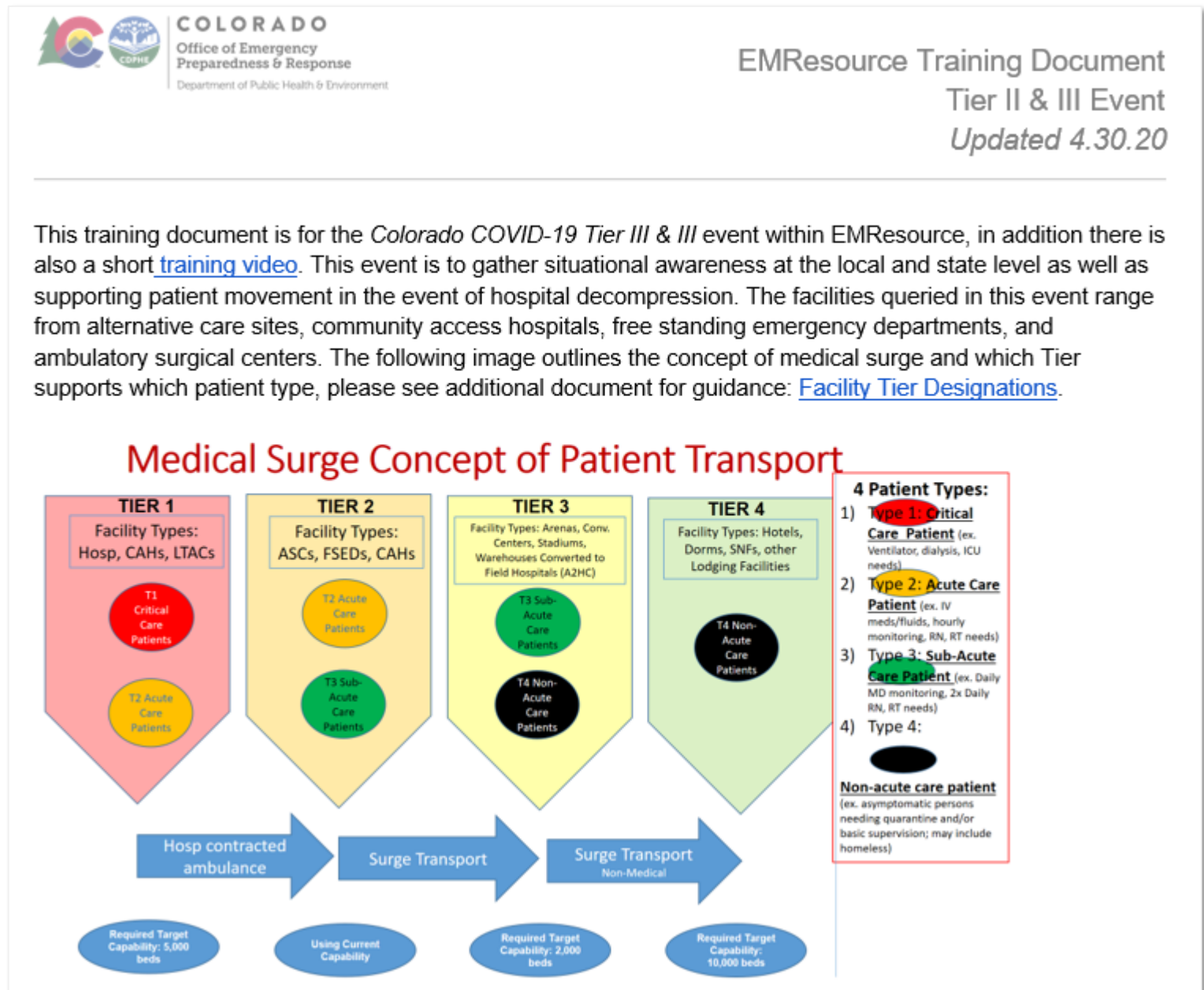
// possible shooting victim ///

BOLO MISSING CHILD IN AURORA

Created By: Regional NW/W PH EPR Program Manager @ 03/31/20 15:58

This is a resource status update for long term care and assisted living facilities in the event beds or resources would need to be identified to respond to a medical surge. | [Event Details](#) | [View History](#)

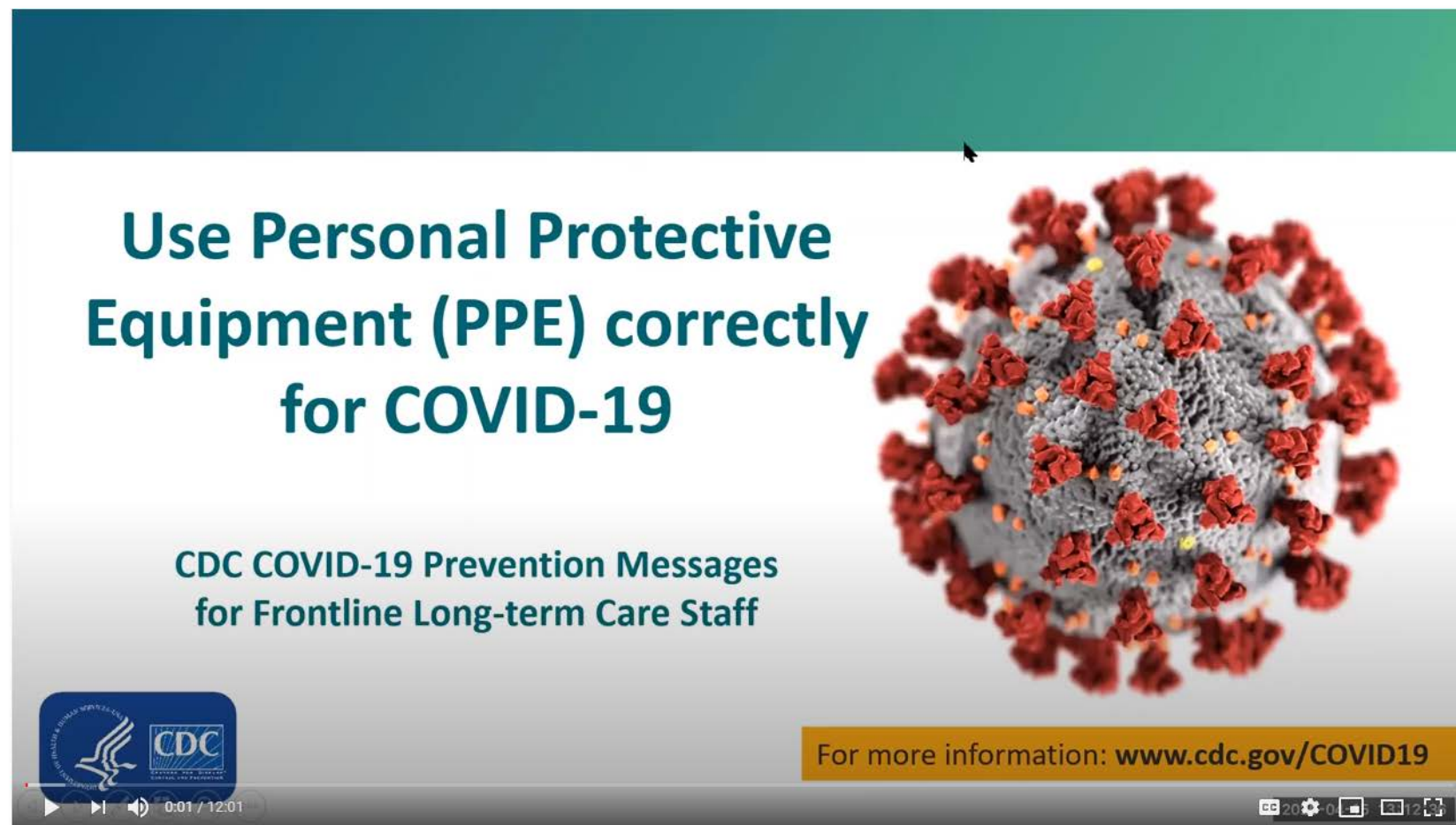
	Northwest AH	Acute Isolation Bed Avail.	24 Hour Nursing Supervisor Phone Number	Supplies - general (explain)	Beds-Female Available	Beds-Male Available	Oxygen Concentrators	Staff	Transportation resources	Oxygen	Comment	Last Update	By User
	Advantage Home Care	--	--	--	--	--	--	--	--	--			
	Angkor Wat Alternative Care	--	--	--	--	--	--	--	--	--			
	Aspen Glen Assisted Living	--	--	--	--	--	--	--	--	--			
	Aspen Ridge Alzheimers Special Care	1	9702541233	--	5	6	0	yes	yes	No	14 pass van + driver	17 Apr 2020 09:32	Aspen Ridge
	BeeHive Homes of Grand Junction	--	--	--	--	--	--	--	--	--			
	Bookcliff Manor Assisted Living	--	--	--	--	--	--	--	--	--			
	Bristlecone Health Services	--	--	--	--	--	--	--	--	--			
	Cappella of Grand Junction	--	--	--	--	--	--	--	--	--			
	Casey's Pond Senior Living LTC	--	--	--	--	--	--	--	--	--			
	Castle Peak Senior Life & Rehab	--	--	--	--	--	--	--	--	--			
	Comfort Care Assist Lvng and Memory Care	0	--	--	1	--	--	--	no	--	no One empty room, all rooms are private.	16 Apr 2020 12:26	Heidi White
	CO State Veterans Nursing Home - Rifle	--	--	--	4	12	4	yes	yes	Yes	4 male beds on secured unit, (males only u...	10 Apr 2019 16:05	Colorado Veterans Communi
	Eagle Ridge at Grand Valley	0	Sarah Whitehurst 970-822-2949	--	2	2	6	yes	Yes	Yes	2 vans (2 w/c, 4 ambulatory)--drivers availa...	17 Apr 2020 13:33	Eagle Ridge at Grand Vall...
	Eban Exer Luthan Care Center	--	--	--	--	--	--	--	--	--			
	E Dene Moore Care Center	3	970 948 1014		3	2	5	No staff for additional residents	2 buses, 1 minivan,	Yes	We are keeping in place 3 beds available fo...	10 Apr 2020 11:04	Chad Wagner
	Family Care Assisted Living	--	--	--	--	--	--	--	--	--			
	FHW-Oaks	--	--	--	5	6	0	No	Multiple buses with wheelchair	No	11 total open beds for M/F 11 total open b...	28 Apr 2020 07:45	Oaks-Daily Ops Director



Residential Settings Strike Force Update

Strategy	Key Actions (next 2-3 weeks)
Testing for Disease Presence	<ul style="list-style-type: none"> ➤ Deploy strategic testing to decrease asymptomatic spread ➤ Require Symptom Monitoring where cohorting or no COVID+ ➤ Deploy Rapid Response Team for positive or presumed cases
Personal Protective Equipment	<ul style="list-style-type: none"> ➤ Identify and document PPE shortages ➤ Move distribution of PPE for these settings to the state
Cohorting & Facility Isolation	<ul style="list-style-type: none"> ➤ Issue aggressive guidance on cohorting ➤ Develop metrics for effective monitoring ➤ Create COVID+ only facilities
Enforcement & Education	<ul style="list-style-type: none"> ➤ Document, distribute, and monitor use of best practices for infection control ➤ Increase enforcement ➤ Develop infection control/TA within Rapid Response Team
Staffing Implementation Plan	<ul style="list-style-type: none"> ➤ Develop and implement IT solution to connect providers with staff ➤ Issue cross-agency guidance on staffing flexibility

LTC Frontline Staff Training Webinars



- [Sparkling Surfaces](#)
- [Clean Hands](#)
- [Closely Monitor Residents](#)
- [Keep COVID-19 Out!](#)
- [PPE Lessons](#)

www.cdc.gov/coronavirus/2019-ncov/hcp/long-term-care-strategies.html

Announcement - Connect to Care

Site specifically tailored for long term care staffing

Matches healthcare workers seeking employment with employers

Will launch first for nursing facilities, assisted living and residential care facilities

Future capability for hospitals, home care, direct support professionals, personal care attendants (self-directed), hospice and home health

New Guidance Coming



- Rates for SNF/ICF
- Transition coordination activities during COVID-19 pandemic
- Options counseling during COVID-19 pandemic
- Resuming day programs
- The handling of federal COVID-19 stimulus payments

All COVID-19 related Memos can be found here: www.colorado.gov/hcpf/long-term-services-and-supports-covid-19-response

Previous Guidance

Case Management Agencies

Operational Changes

- [OM 20-049](#)
- [OM 20-027](#)
- [OM 20-034](#)
- [OM 20-037](#)
- [OM 20-045](#)

PASRR Changes

- [OM 20-043](#)

Critical Incident Reporting for COVID-19

- [OM 20-044](#)

Facilities and PACE

Infection Control And Prevention of COVID-19 in Nursing Homes (CMS)

- [CMS QSO-20-14-NH](#)

Telemedicine in Nursing Facilities

- [OM 20-032](#)

Training & Certification

- [OM 20-038](#)

HCBS Providers

Long-term Care and Congregate Settings

- [OM 20-017](#)

HCBS Therapy Services

- [OM 20-020](#)

Guidance for Class B Providers

- [OM 20-023](#)

Changes to Benefits & Services (Table)

- [OM 20-046](#)

Telemedicine

- [Temporary Policy](#)

Non-medical Transportation

- [OM 20-031](#)

Residential Guidance

- [OM 20-035](#)

Host Home Inspections

- [OM 20-036](#)

Retainer Payments

- [OM 20-039](#)

CDASS Sick Time

- [OM 20-047](#)

Changes to Benefits & Services Rates (Table)

- [OM 20-048](#)

All COVID-19 and LTSS related memos can be found here:

www.colorado.gov/hcpf/long-term-services-and-supports-covid-19-response



New Questions?

Stay Engaged

Memos, Webinar Info, and FAQs - Updated Regularly

www.colorado.gov/hcpf/long-term-services-and-supports-covid-19-response

Email us

HCPF_HCBS_Questions@state.co.us

Subscribe to Future Updates

[Click here to subscribe](#)

More Information



www.cdc.gov/coronavirus/2019-ncov/



www.cms.gov/About-CMS/Agency-Information/Emergency/EPRO/Current-Emergencies/Current-Emergencies-page



covid19.colorado.gov



Local Public Health Agencies

www.colorado.gov/cdphe/find-your-local-public-health-agency



www.colorado.gov/hcpf/COVID

Reminder: Personal Protective Equipment

If you or your organization are experiencing a shortage or outage of personal protective equipment (masks, gloves, gowns, etc.) to conduct essential or life saving functions during this crisis, please reach out to your **local emergency manager** or **local public health department**.

[Find Your Local Community Emergency Manager](#)
[Find Your Local Public Health Department](#)

To report issues in
obtaining PPE please
notify:

Sadie Martinez
Access and Functional Needs
Coordinator
Office of Emergency Management
720.610.1691
sadie.martinez@state.co.us

Next Steps

Thank You!