

COVID-19 Updates

Colorado Department of
Health Care Policy & Financing

July 10, 2020

Overview

Executive Director Update

- Kim Bimestefer, Executive Director, HCPF

Colorado Department of Public Health & Environment (CDPHE) Update

- Greg Schlosser, Branch Chief, CDPHE

Public Health Emergency End Date

- Chris Underwood, Deputy Chief of Staff, HCPF

Single Entry Point Transitions

Residential Strike Force Update

Resources

- Bonnie Silva, Office of Community Living Director, HCPF

Indoor Visitation Update

- Elaine McManis, Home and Community Facilities Branch Chief, CDPHE

THANK YOU for your
partnership during this
unprecedented time

THANK YOU for your passion
and contributions

THANK YOU for taking care of
Coloradans,
including Medicaid, CHP+
members

Exec Dir Agenda

- COVID19 Impact & Response
- 2020 Budget & Legislative Session Highlights
- Federal Discussion
- Telemedicine
- RAE Enhancements

COVID-19 in Colorado

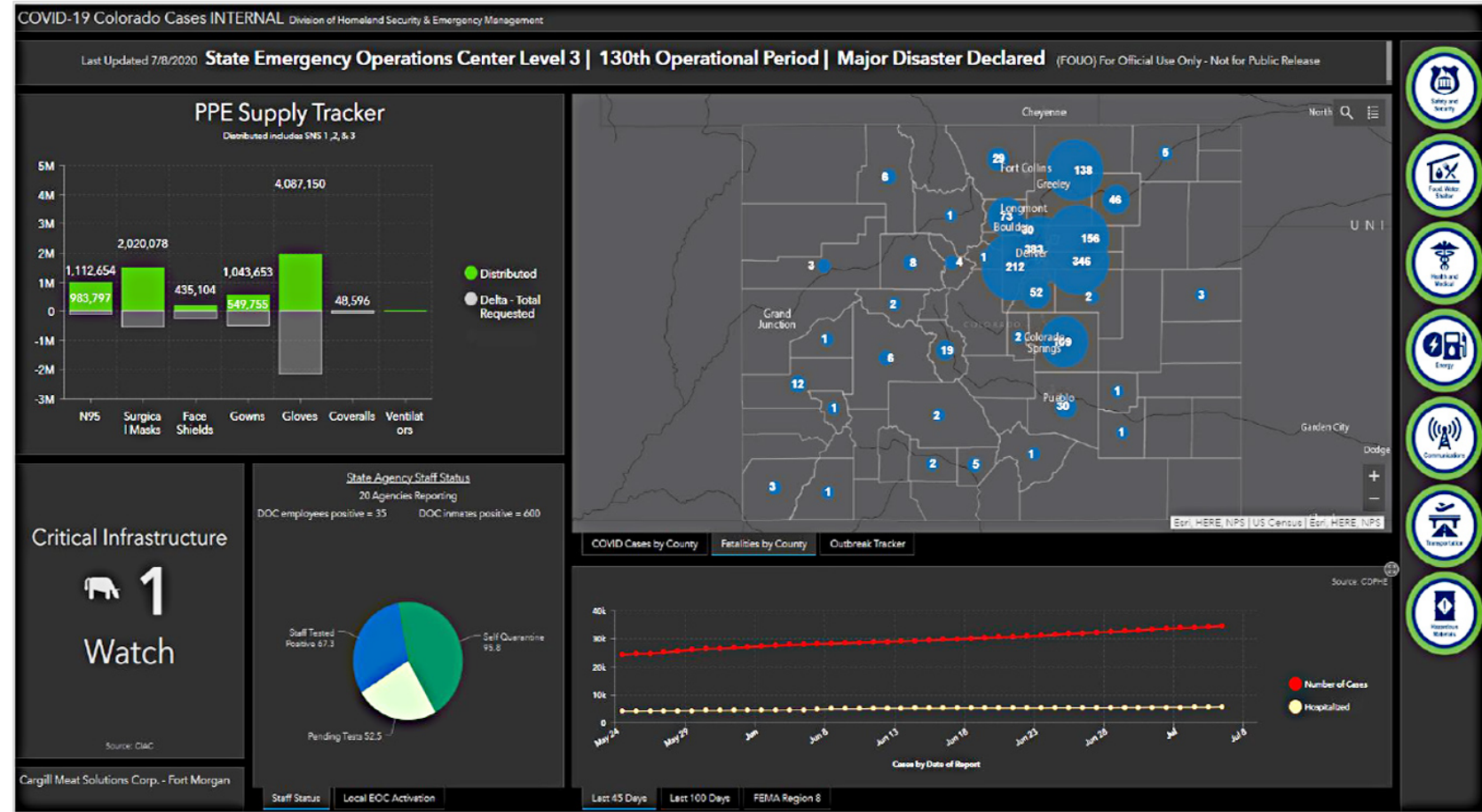
COVID-19 Cases in Colorado

CDPHE updates:

<https://covid19.colorado.gov/>

Positive Cases	35,116
People Tested	367,724
Deaths among cases	1,704
Deaths due to COVID-19	1,544

Updated July 8, 2020 - 4 pm



CDC Changes to COVID19 Case Definition

- Fever or chills
- Cough
- Shortness of breath or difficulty breathing
- Fatigue
- Muscle or body aches
- Headache
- New loss of taste or smell
- Sore throat
- Congestion or runny nose
- Nausea or vomiting
- Diarrhea

Please do your part

- Wear a mask
- Socially distance
- Wash hands
- Follow public health orders

Protect Our Neighbors - Thanks for your leadership!



Level 1: Stay at Home

Everyone was required to stay at home except for grocery shopping, exercise and necessary activities. Only critical businesses were open.



Level 2: Safer at Home and in the Vast, Great Outdoors

While we are all still safer at home, we are also able to practice greater social distancing in our great outdoors than in confined indoor spaces.



Level 3: Protect Our Neighbors

Local public health agencies have the ability to contain surges in cases and outbreaks through testing, case investigation, contact tracing, isolation, quarantine, site-specific closures, and the enforcement of public health orders.



COLORADO

Department of Health Care
Policy & Financing

Legislative Session Key HCPF Budget Actions

Reductions in the Long Bill include:

- Reducing HCPF Admin Personal Services funding by 5%
- Increase certain member copays to the maximum allowed under federal law
- Delay the implementation of the Inpatient/Residential Substance Use Disorder benefit
- Reduce funding for Healthy Communities by 75%
- Reduce community provider rates by 1%
- Reduce supplemental payments to Denver Health and University Hospital
- Reduce PACE rates by 2.37%
- Reduce Screening, Brief Intervention, and Referral to Treatment training grants
- Reduce State support for the All-Payer Claims Database
- Reduce funding for the Commission on Family Medicine

Other Budget Actions

Reductions in other bills include:

- Reducing the annual cap on the adult dental benefit from \$1500 to \$1000 (HB 20-1361)
- Making implementation of wraparound services for children and youth as required by SB 19-195 contingent on available appropriations. No funding is appropriated for FY 2020-21 (HB 20-1384)
- Limiting the annual rate increase for skilled nursing facilities to 2%, instead of 3% (HB 20-1362)
- Using the increased federal Medicaid financing (HB 20-1385) and Healthcare Affordability and Sustainability cash funds to create General Fund relief (HB 20-1386)

Other Budget Actions

- **HB20-1426** includes mission critical renewal of HCPF's overexpenditure and transfer authority
- **SB20-212**: Makes permanent HCPF emergency telemedicine policy changes
- **SB20-033**: Extends the Medicaid Buy-in Program for Working Adults with Disabilities to eligible members 65+ starting in 2022
- **HB20-1236**: Creates a new "easy enrollment" program adding the option to be evaluated for eligibility for health coverage to tax filings
- **HB20-1232**: Codifies HCPF policies on coverage of routine costs for clinical trials
- **HB20-1237**: Codifies HCPF policy assigning a child in an out-of-home placement to the same managed care entity that covers the county with jurisdiction over the placement action

Federal Impact: LGBTQ - ACA & SCOTUS

Two contradictory outcomes:

- On June 12, HHS rolled back ACA LGBTQ anti-discrimination protections that had expanded the definition of "sex" to include gender identity
 - HCPF/GO had submitted comments against the proposed rule changes last year
- On June 15, SCOTUS issued 6-3 decision that LGBTQ people **cannot** be fired for being LGBTQ pursuant to Title VII of the Civil Rights Act of 1964
 - Aligns with Colorado protections already in place
 - Supports our goal to make a Colorado that Works for All

The Colorado Anti-Discrimination Act protects against discrimination in health care by making it unlawful to discriminate against individuals in "places of public accommodation," which is any place of business serving the "health, appearance, or physical condition of a person" including any "dispensary, clinic, hospital, convalescent home, or other institution for the sick, ailing, aged, or infirm []." C.R.S. 24-34-601(1).



COLORADO
Department of Public
Health & Environment

Update

- State Emergency Operations Center (SEOC)
- Survey Priorities
- Isolation Plan Submissions
- [HEMSD COVID-19 Blog](#)



COLORADO
Department of Health Care
Policy & Financing

COVID-19 Public Health Emergency Timelines and Plans

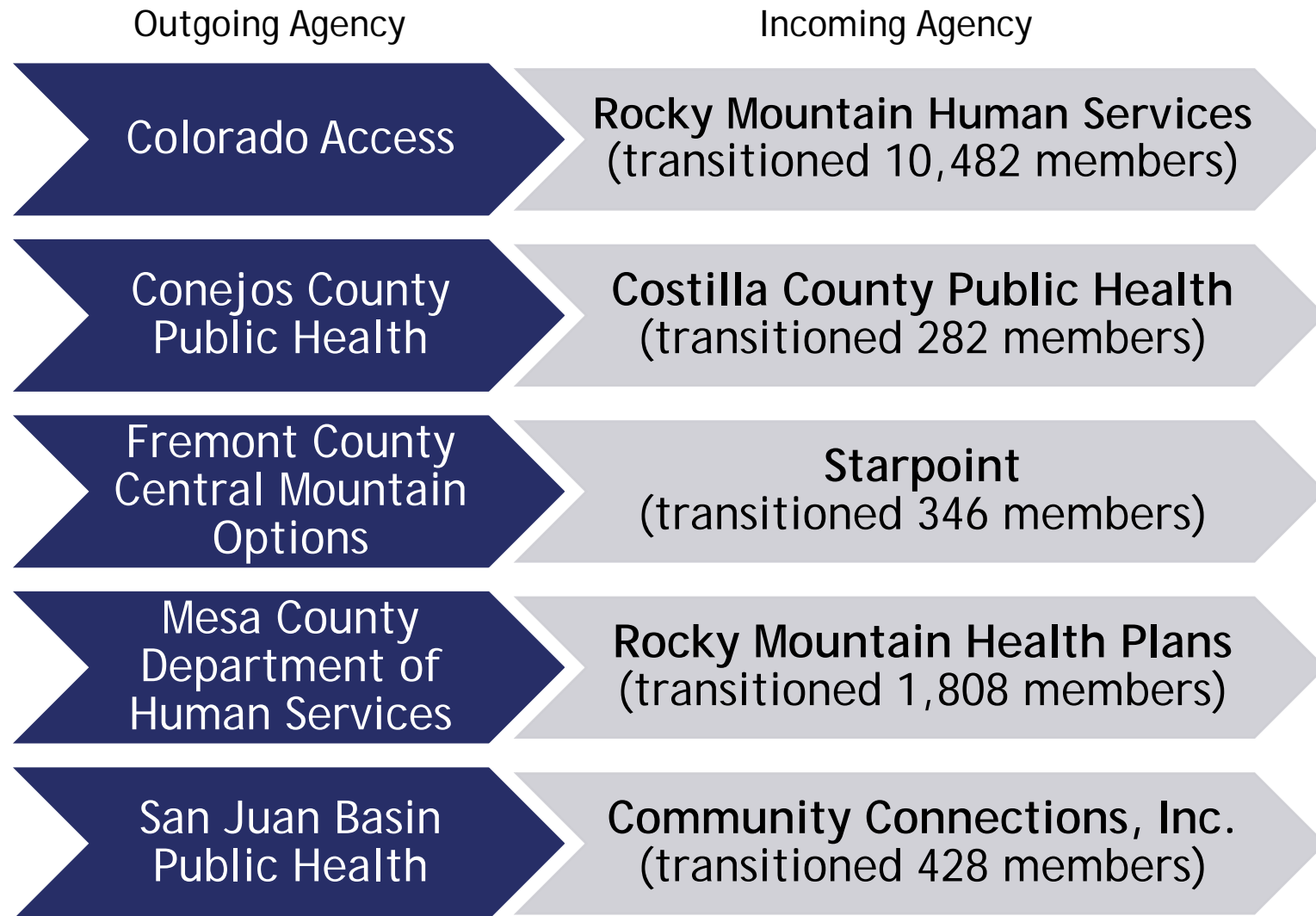
Federal Public Health Emergency Period

- The U.S. Department of Health and Human Services (HHS) determines the duration of the COVID-19 public health emergency (PHE)
- HHS indicated it will extend the PHE beyond July 25; it is not yet official, but we expect formal notice soon
- We have asked for at least 2 months notice before the PHE is ended so we can properly notice members and providers
- We will post updates on [Colorado.gov/hcpf/COVID](https://colorado.gov/hcpf/COVID)

Single Entry Point Transitions

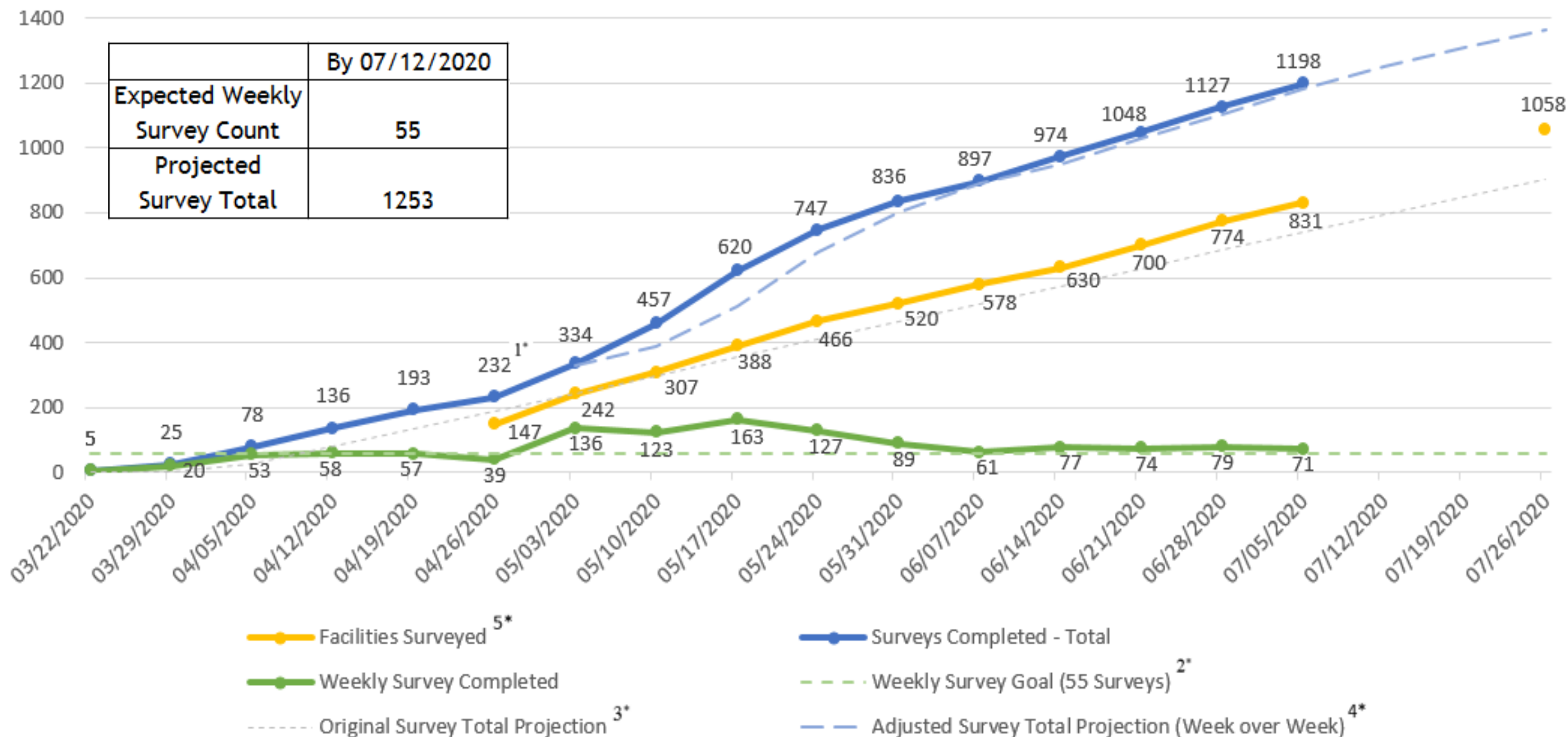
Single Entry Point (SEP) Transitions

- Department began working with **all** outgoing agencies immediately
- Set up weekly meetings to support incoming and outgoing agencies
- Continuing to hold meetings with incoming agencies to provide support and **ensure all deliverables and member needs are met**
- All transitions were successfully executed as of **July 1, 2020**
- **13,346 members** successfully transitioned



Residential Strike Force Update

IC Focused Survey Progress



Infection Control

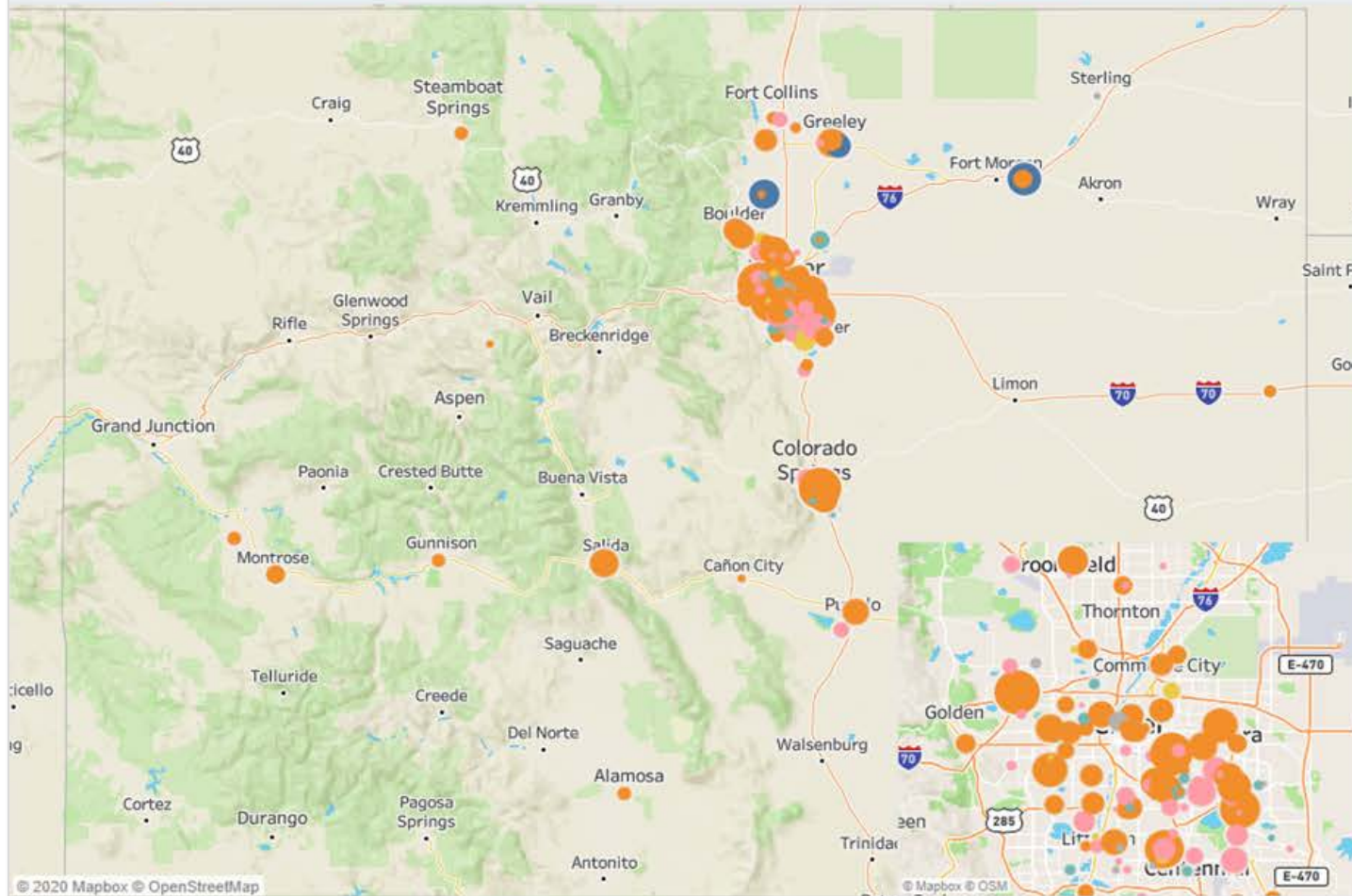
Top Cited Concerns

# Cited	Issue
162	Not following proper hand washing/hygiene procedures for staff / donning and doffing gloves
138	Not following proper personal protective equipment guidelines /failed to ensure adequate PPE supply
110	Not completing and not documenting screening of visitors
94	Failed to ensure residents had face covering while staff were in their rooms / when residents outside of their rooms
94	Not implementing proper social distancing requirements

Residential Facilities with COVID-19 Outbreaks - Updated through 6/30/2020

Bubble Size are COVID-19 Resident Cases
COVID Cases include Medicaid and Non-Medicaid Individuals

Nursing Facility Alternative Care Facility Nursing Facility and ACF ICF or Group Home Assisted Living Independent Living

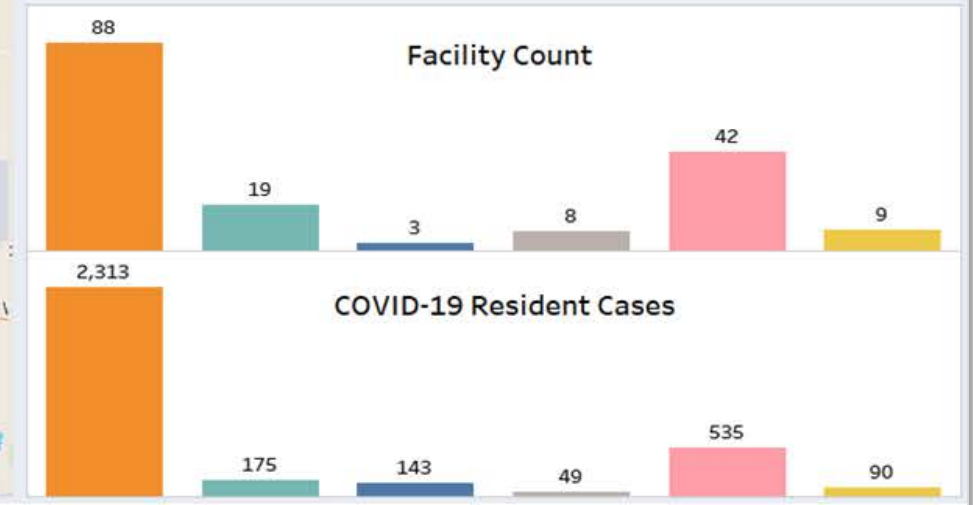


Choose Display Measure: COVID-19 Resident Cases (All)

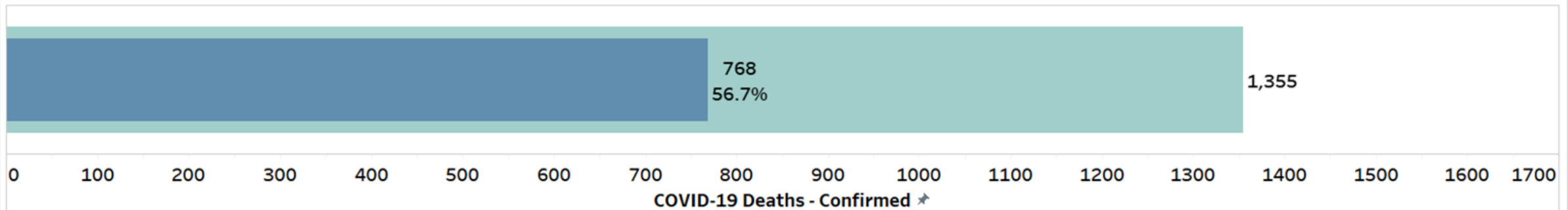
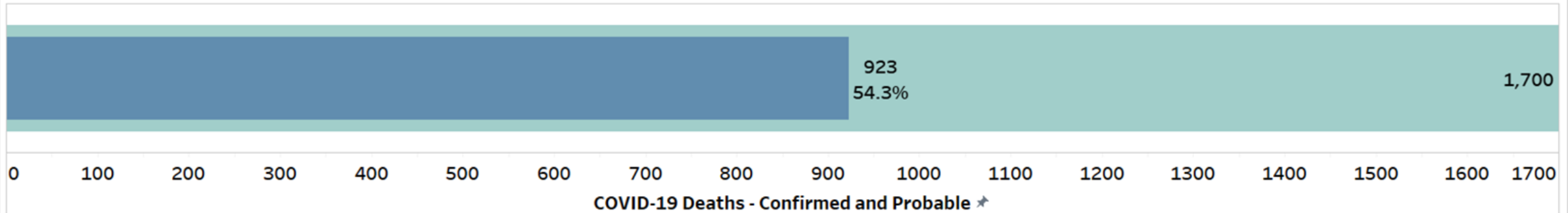
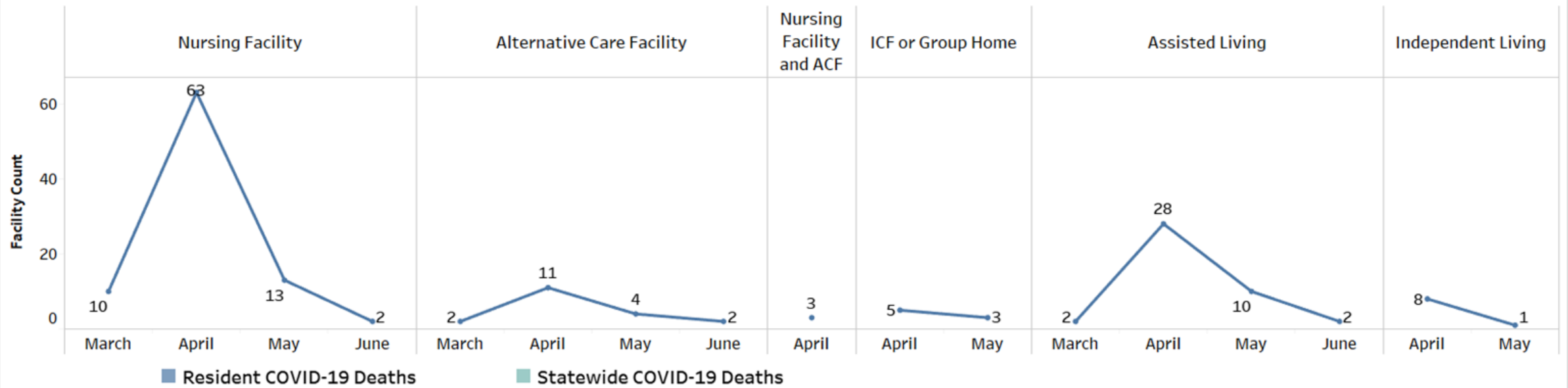
Resolved Outbreaks: (All)

Select Facility Outbreak Start Date: 6/29/2020 Show history

Facility Count	169
Residents COVID - Confirmed	2,649
Residents COVID - Probable	656
Residents COVID Deaths - Confirmed	768
Residents COVID Deaths - Probable	155
Staff COVID - Confirmed	1,730
Staff COVID - Probable	879
Staff COVID Deaths Confirmed	6
Staff COVID Deaths Probable	



Facility Outbreak Start and COVID-19 Deaths - Updated through 6/30/2020



PROGRESS TOWARDS 8-WEEK TESTING GOAL

State Lab Testing

Total Facilities

88

Total Test Kits Distributed

40,270

National Guard Testing

Total Facilities

31

Total Tested

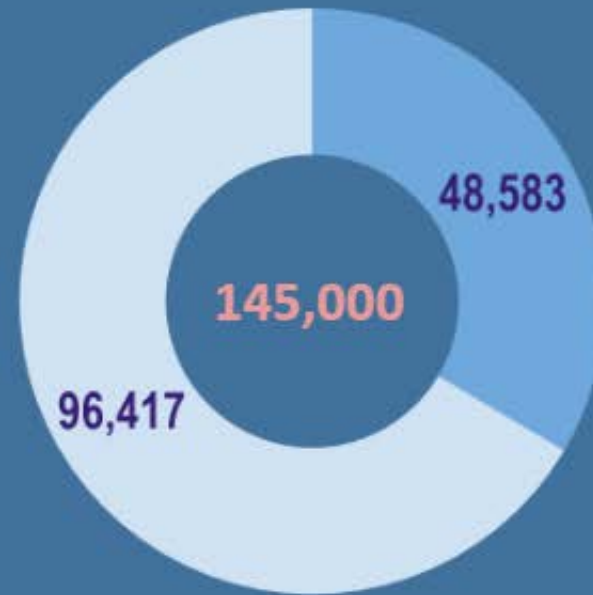
3,735

Total Facilities

20

Total Tested

4,578

Colorado State University
Testing

● Total Tests to Date ● Tests Remaining

Total Positives: CSU Testing

1

Resident

7

Staff

Week 4 Update

6/29-7/5

State Lab Testing Support

of Facilities Receiving Supplies: 48

of Test Kits Distributed: 12,620

National Guard Testing Support

of facilities visited 10

Total # tested 977

of residents tested 458

of staff tested 519

CSU Testing Support

of New Facilities: 4

of Tests Conducted: 1,334

of New Positives Identified: 3

TOTAL TESTING OF RESIDENTIAL CARE SETTINGS

Total Facilities that have Received Supplies

149

State Lab
Testing

Total Test Kits Distributed

81,315

TOTAL TESTS
DISTRIBUTED

99,573

National Guard Testing & Support

Total Facilities

63

Total Tested

10,220

Total Residents Tested

4,146

Total Staff Tested

5,086

Total Positives: State Testing

864

Total Positives: CSU Testing

87

Colorado State University Testing*

Total Facilities

25

Total Tested

8,038

Total Residents Tested

1,183

Total Staff Tested

3,741

*CSU totals include their phase one pilot testing



COLORADO

Department of Health Care
Policy & Financing

ConnectToCare: Top Jobs

Certified Nursing Assistant/Patient Care Technician	126
Direct Support Professional/Support Staff	26
Direct Care Aide/Personal Caregiver/Universal Care Worker	11
Licensed Professional Nurse (LPN)/Licensed Vocational Nurse (LVN)	33
Physical Therapist	35
Physician	30
Physician Assistant	20
Registered Nurse (RN)	215
Social Worker	15

Indoor Visitation

- Developing requirements for eventual Indoor Visitation
 - Monitoring outbreak data-impacts of outdoor visitation implementation
- Likely will include revised public health order
 - Clarity on existing allowed indoor visitation
 - Minimum requirements for facilities to implement
 - Facilities will develop plans that fit them within parameters
 - Addressing Ancillary Service providers

Current Indoor Visitation

- Some visitation currently allowed
 - LTC Ombudsman, APS
 - Compassionate Care Visits
- CDPHE will better define Compassionate Care. This is not just end of life.

Facility Requirements/Plans

- Minimum requirements
 - PPE, Staffing, Testing etc.
 - Step up from Outdoor Visitation Minimum Requirements
- Leeway for facility specific plans
 - Schedule, screening, contact tracing, masking etc. similar to outdoor
 - Designated or private rooms for visitors- disinfected post-visit.

Ancillary Services

Barbers, Beauticians, Podiatrists, Dentists, Psychology, Therapy, etc.

- Reviewing testing options (weekly?), daily screening
 - Possible testing alternatives for irregular appts.
- Must be in resident's room or specified room disinfected between visitors.
- Masking when possible, Appropriate PPE
- Screening at entry/Deny entry to noncompliant or symptoms



New Questions?

Stay Engaged

Memos, Webinar Info, and FAQs - Updated Regularly

www.colorado.gov/hcpf/long-term-services-and-supports-covid-19-response

Email us

HCPF_HCBS_Questions@state.co.us

Subscribe to Future Updates

[Click here to subscribe](#)

Resources

Previous Guidance

Case Management Agencies

Operational Changes

- [OM 20-049](#)
- [OM 20-027](#)
- [OM 20-034](#)
- [OM 20-037](#)
- [OM 20-045](#)

PASRR Changes

- [OM 20-043](#)

Critical Incident Reporting for COVID-19

- [OM 20-044](#)

Level of Care Changes

- [OM 20-053](#)

Transition Coordination

- [OM 20-056](#)

Facilities and PACE

Infection Control And Prevention of COVID-19 in Nursing Homes (CMS)

- [CMS QSO-20-14-NH](#)

Telemedicine in Nursing Facilities

- [OM 20-032](#)

Training & Certification

- [OM 20-038](#)

Rate Increase

- [OM 20-050](#)

Options Counseling

- [OM 20-054](#)

Stimulus Payments

- [OM 20-059](#)

Civil Money Penalty (CMP)

- [IM 20-021](#)

HCBS Providers

HCBS Therapy Services

- [OM 20-020](#)

Guidance for Class B Providers

- [OM 20-023](#)

Changes to Benefits & Services (Table)

- [OM 20-046](#)

Telemedicine

- [Temporary Policy](#)

Residential Guidance

- [OM 20-035](#)

Host Home Inspections

- [OM 20-036](#)

CDASS Sick Time

- [OM 20-047](#)

Changes to Benefits & Services Rates (Table)

- [OM 20-048](#)

Flexibility in Hiring

- [IM 20-019](#)

CC & SCC Clarifications

- [OM 20-060](#)

Additional Provider Relief Funds

- [IM 20-024](#)

Non-Medical Transportation

- [OM 20-063](#)

Retainer Payments Ending

- [OM 20-069](#)

Guidance for Reopening or Expanding Day Programs

- [OM 20-070](#)

All COVID-19 and LTSS related memos and FAQs can be found here:

www.colorado.gov/hcpf/long-term-services-and-supports-covid-19-response

Reminder: Personal Protective Equipment

If you or your organization are experiencing a shortage or outage of personal protective equipment (masks, gloves, gowns, etc.) to conduct essential or life saving functions during this crisis, please reach out to your **local emergency manager** or **local public health department**.

[Find Your Local Community Emergency Manager](#)
[Find Your Local Public Health Department](#)

To report issues in
obtaining PPE please
notify:

Sadie Martinez
Access and Functional Needs
Coordinator
Office of Emergency Management
720.610.1691
sadie.martinez@state.co.us

More Information



www.cdc.gov/coronavirus/2019-ncov/



www.cms.gov/About-CMS/Agency-Information/Emergency/EPRO/Current-Emergencies/Current-Emergencies-page



covid19.colorado.gov



Local Public Health Agencies

www.colorado.gov/cdphe/find-your-local-public-health-agency



www.colorado.gov/hcpf/COVID



COLORADO

Department of Health Care
Policy & Financing

Resources from Others

Recorded Webinar: Addressing Social Isolation Through Technology Solutions

Administration for Community Living (ACL) presented a webinar highlighting how technology can be leveraged to increase social engagement, including specific hardware and software options. Presenters identify resources for acquiring and distributing technology, as well as mechanisms for training older adults and adults with disabilities to use technology solutions designed to mitigate social isolation.

- [Recorded Webinar: Addressing Social Isolation Through Technology Solutions](#)
- [Webinar Transcript](#)
- [Webinar Slides](#)

Resources

Training for new CMS nursing home reporting requirements

- The Centers for Medicare & Medicaid Services (CMS) released an [interim final rule](#) containing new nursing home requirements for reporting COVID-19 data, expected to begin May 8. Requirements include reporting information to the Centers for Disease Control & Prevention (CDC) through the National Healthcare Safety Network (NHSN) system and notification to residents, resident representatives, and families.
- Webinar training for the new LTCF COVID-19 Module for CDC's National Healthcare Safety Network is posted under the Training tab on their web page www.cdc.gov/nhsn/ltc/covid19/index.html

Resources

HUD Webinar on cleaning and disinfecting

- CDC and HUD hosted a webinar on cleaning and disinfecting to protect individuals residing in HUD-assisted multifamily properties. A representative from HUD's Multifamily Housing in conjunction with representatives from the CDC and Washington State Dept. of Health presented on their interim guidance on facility cleaning when a person with coronavirus infection is present or suspected. [View the Presentation](#)
- **TARGET AUDIENCE:** Managers and maintenance staff of HUD-assisted multifamily housing properties

Resources

Alzheimer's Association Colorado Chapter Resources for nursing homes and memory care

- The Alzheimer's Association knows that the COVID-19 pandemic is placing tremendous pressures on facilities and caregivers, and they have prepared a [guidance document](#) to assist staff in caring for persons with dementia in emergencies in long-term and community-based care settings. It also provides guidance on the importance of person-centered care - the essential starting point for optimal care.
- More support is also available at alz.org/professionals-covid or at 800-272-3900

Resources

New CDC LTC Frontline Staff Training Webinars

- These short webinars are all published on the [Key Strategies to Prepare for COVID-19 in Long-term Care Facilities](#) (LTCFs) web page at the bottom under a “Webinar Series” section. CDC reports that “These new webinars are intended to be a training tool/resource for frontline long-term care staff members.”
- Here are the direct links to each webinar:
 - Sparkling Surfaces - <https://youtu.be/t7OH8ORr5Ig>
 - Clean Hands - <https://youtu.be/xmYMUly7qiE>
 - Closely Monitor Residents - <https://youtu.be/1ZbT1Njv6xA>
 - Keep COVID-19 Out! - <https://youtu.be/7srwrF9MGdw>
 - PPE Lessons - <https://youtu.be/YYTATw9yav4>

Resources

Other Links

- [LeadingAge Colorado COVID-19 Updates & Resources](#)
- [LeadingAge](#)
- [Argentum](#)
- [Colorado Department of Public Health & Environment COVID-19 Long-term Care Facility Page](#)
- [Health Care Policy & Financing COVID-19](#)
- [Centers for Disease Control and Prevention](#)
- [Centers for Medicare and Medicaid Services](#)

Next Steps

Thank You!