

Level 1 Requirements



More on Provisional Admissions

- Provisional Admissions include:
 1. Is the need for NH service regarding convalescent care due to discharge from an acute care hospital and likely will require fewer than 30 days of nursing services? (Or Exempted Hospital Discharge)
 2. Emergency stays due to emergency evacuations or protective services placements not to exceed 14 days.
 3. Individuals with delirium where the delirium prevents an accurate diagnosis at the time of entry into the nursing home but is expected to clear within 14 days.
 4. Respite stays of up to 30 days to provide respite to in-home caregivers.



Level 1 Requirements



Opportunities and Take Aways

- Data on outcomes is tracked and automated Level 1 screen determinations are consistently reviewed retroactively to determine quality (keep false + and – low).
- Questions raised by the Level 1 screen are meant to raise critical thinking for the professional completing the form.
- Level 1 is not meant to be a “one and done” check list item prior to NH admission, rather it is an opportunity to evaluate needs specific to a PASRR condition from an outside objective professional perspective.
- A lot relies on how the form is initially filled out so good training on the intention of this process is paramount – when in doubt, fill it out!
- Submitting a current H&P from within 3-6 months is crucial to avoid potential requests for additional information that could delay the process.



Level 1 Process Steps

Understanding PASRR

Level 1 Process Steps



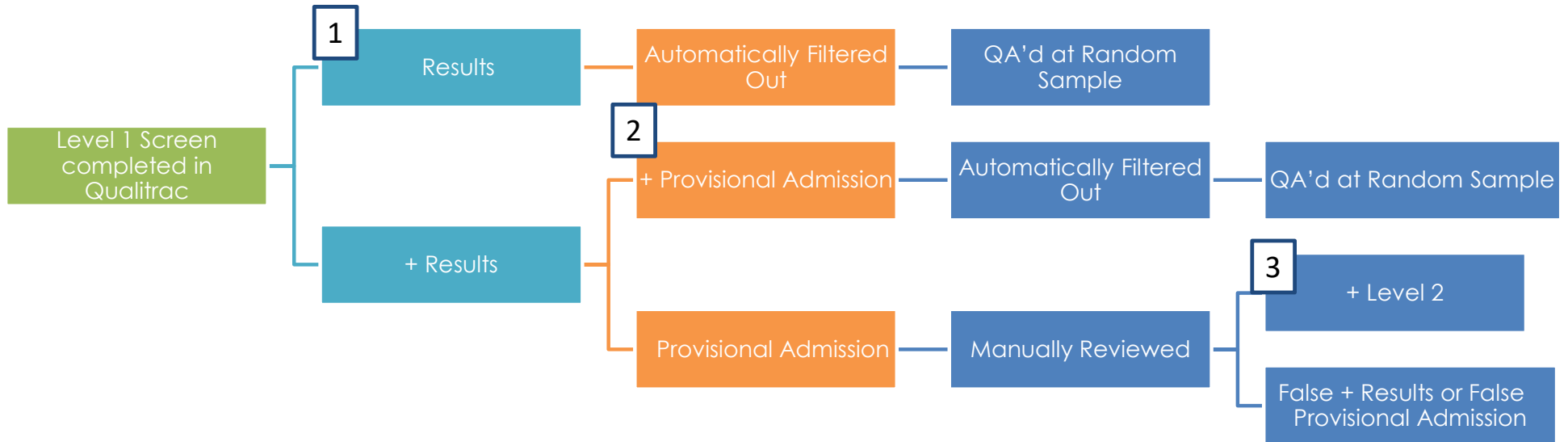
Process Steps

- For CO Medicaid recipients, when Medicaid is the primary payor, The Single Point Entry shall complete the Level 1 screen
- For non-Medicaid individuals admitted from the community, the NH staff shall complete the Level 1 Screen
- For non-Medicaid individuals admitted from the hospital, the hospital staff shall complete the Level 1 Screen
- Screen results are entered into the Qualitrac portal, which we will demo
- Staff manually review all positive screens with no provisional admission indicators and render an outcome within 6 business hours of receipt of complete information
 - If more information is determined to be necessary to complete the Level 1 screen review, information is requested and if returned within 3 BD, the review will continue immediately

Level 1 Process Steps



Process Flow for 3 Outcomes of PASRR Level 1



Level 1 Process Steps



Key Take Away of Level 1

- If the answers to the questions trigger an automated review, you will receive an immediate outcome
- If the answers to the questions trigger a manual review, you will be contacted through Qualitrac to either present additional information or be informed of the review outcome



Level 1 Process Steps



Vendor Transition Timeline

February 16th 2021

- Known Triggered PALs emailed via secure email to Coloradoreviews@telligen.com
- All other PALs submitted via current process

February 25th 2021

- All PALs emailed to Coloradoreviews@telligen.com

March 1st 2021

- Qualitrac Portal opens
- Create user accounts
- Begin processing all Level 1 screens via Qualitrac





Level 1 Form

Understanding PASRR

Level 1 Form



Form Fields

- PASRR Level 1 form in Qualitrac – Yes or No Questions
 - Section A = PASRR Condition indicators – MI
 - Does the individual have a known or suspected diagnosis of a major mental illness?
 - Does the individual have any indications of a major mental illness?
 - Is the individual on antipsychotic or antidepressant medication?
 - Section B = PASRR Condition indicators – ID/D or RC
 - Does the individual have a known or suspected diagnosis of intellectual or developmental disability?
 - Does the individual have a diagnosis of a related condition such as Cerebral Palsy, autism, or seizures?
 - Has the individual ever received services from, or been referred to, an agency serving persons with an intellectual or development disability?
 - Does the individual have any indicators of intellectual or development disability or a related condition?
 - Does the individual have a brain injury?
 - Section C = Provisional Admission Indicators
 - Is the need for NH service regarding convalescent care due to discharge from an acute care hospital and likely will require fewer than 30 days of nursing services?
 - Emergency stays due to emergency evacuations or protective services placements not to exceed 14 days.
 - Individuals with delirium where the delirium prevents an accurate diagnosis at the time of entry into the nursing home but is expected to clear within 14 days.
 - Respite stays of up to 30 consecutive days to provide respite to in-home caregivers.

Manual Review triggered by a (+) in either Section A or B, **and** all (-) in C

Level 1 Form



Form Demo

- Supporting documentation for this process with screen shots will be available as a PDF file following this online presentation and demo.
- First a few brief points...
 - There is skip logic built in so that for every Yes/No question, if you select the Yes option, more fields will appear.
 - You will also have the ability to upload additional documentation necessary directly to the Level 1 screen, at a minimum we require the most recent, not to exceed 6-months old, H&P and a current medication list.

Level 1 Form



Supporting Documentation

- Step-by-step handouts
- Summary Cheat Sheets
- A recording of this training

- Support staff and resources through Telligen, HCPF, OBH and SIDA





Level 2 Overview

Understanding PASRR

Level 2 Requirements



Purpose and Intent

As noted by PTAC, the PASRR Level II evaluation must not merely rubber stamp the outcome of the Level I. Rather it must “look behind” the diagnosis of record to identify the “true” diagnosis.

The Level II must include the following elements:

- A history and physical (H&P), performed by a physician;
- A functional assessment, including activities of daily living (ADLs) and instrumental activities of living (IADLs);
- A history of medication and drug use;
- An assessment of psychiatric history performed by a qualified assessor (e.g., a psychiatrist, a licensed social worker or BHP, or a nurse with substantial psychiatric experience).



Level 2 Requirements



Outcomes and NOD letters

- Outcomes are focused on
 - Is there a PASRR Condition?
 - Is the Nursing Home the Most Appropriate Level of Care?
 - Is there a need for Specialized Services?

- Once the outcomes are recommended by Telligen (within 1 BD of completed evaluations), then the applicable state authority (SMHA or SIDA) will turn the above recommendations into determinations through a Notice of Determination (NOD) letter which will be added to the case in Qualitrac.
 - The goal is to complete the entire PASRR process within 5-7 business days from start to finish

- This NOD letter should be made available to:
 - The Individual or representative
 - To the Nursing Home
 - And the referral source, if different from the nursing home itself



Level 2 Requirements



Outcomes and NOD letters

- A word on Contingent NOD letters,
 - If the I/DD determination has not yet been formally made by the appropriate CCB, the PASRR process will result in a contingent NOD which means any recommendations resulting from the PASRR II evaluation should be implemented to the extent possible, knowing that the sub set of services specifically supported by I/DD funding streams will not be accessible until the I/DD determination can be confirmed.
 - NH staff are responsible for continuing to advocate for an I/DD determination with the relevant CCB, and if the I/DD determination is completely more than 30 days from the Contingent NOD letter, a 2nd Level 1 screen should be completed to initiate the resident review process.



Level 2 Requirements



PAS vs RR

New – Preadmission:

- A Level II evaluation is a comprehensive and individualized evaluation of an applicant to a Medicaid certified NF.
- The Level II evaluation is the function of evaluating and determining whether NF services and specialized services are needed.
- The exception would be for admissions to a dually certified NF under an Exempted Hospital Discharge (EHD).

A Resident Review is similar to the Level II, but is conducted for a current NF resident and triggered by:

- An EHD stay that is exceeding 30 days
- The conclusion of a time limited Advanced Group Determination admission
- Notification to a State Authority of a resident having a **significant change in condition**



Level 2 Requirements



Opportunities and Take Aways

- It is the responsibility and expectation of the one submitting the Level I screen into Qualitrac to provide supplemental clinical documentation that will be crucial to an effective and timely Level 2 evaluation such as:
 - The most recent H&P within the last 6 months,
 - A current medication list,
 - Any other relevant clinical to support any Yes answers indicated on the screen

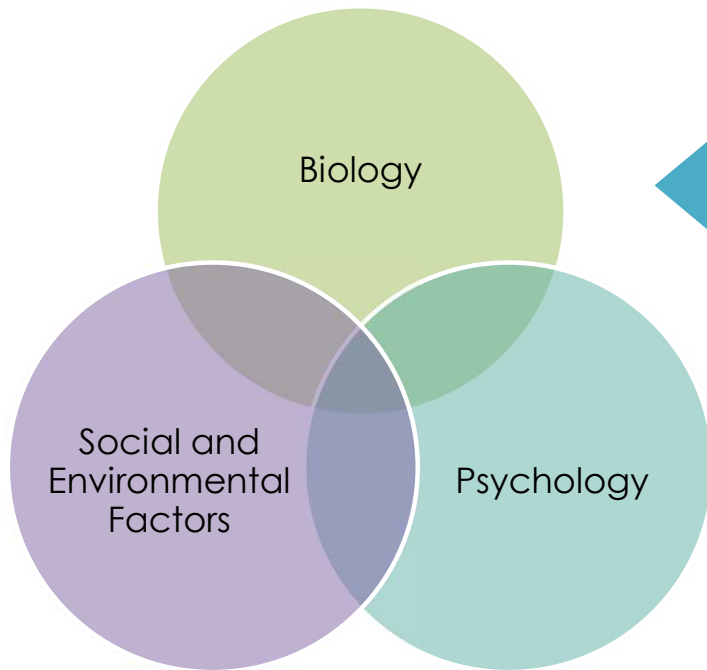
- It is the expectation that the one submitting the Level I screen will share the Level I Outcome letter and the Level 2 NOD letter (if applicable) with the individual, and/or the individuals representative
 - In particular, the notice of recommendation for the Level 2 evaluation



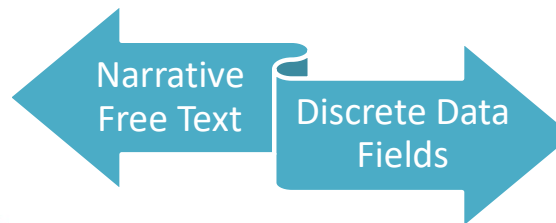
Level II Form



Form Fields



Bio-Psycho-Social Evaluation



PASRR II Evaluation Sections:

- Information about PASRR II
- Patient Demographics
- HPI
- Diagnosis History
- Medication List
- Medical Treatment History
- Behavioral Health and Support Services Treatment History
- Substance Use History
- Social Systems
- Communication and Comprehension
- MSE
- Current Behaviors
- ADLs
- Diagnostic Results of Evaluation
- Case Formulation



Summary

BH Program: Understanding PASRR



Closing

1. What was a key take-away for you from this training?
2. What, if anything, will you do differently as a result?