



CULTURE CHANGE: LEARNING FROM PEOPLE WITH DISABILITIES

MAY 10, 2022

COLORADO CASE MANAGEMENT REDESIGN:
CAPACITY BUILDING LEARNING COLLABORATIVE

HEALTH MANAGEMENT ASSOCIATES

AGENDA

- Introductions
- Background
 - Case Management Redesign (CMRD)
 - CMRD Capacity Building Project
 - Supporting each person
- Discussion with Panelists and Attendees



INTRODUCTIONS



JEN FAUTSKO

Mom to the amazing
Turner & staff for
The Arc of the
Central Mountains



JOSE TORRES-VEGA

Information Technology
Manager &
Non-Attorney
Advocate

Colorado
Cross-Disability
Coalition



ALISON SBRANA

Board Member

Body Politic,
a national health
justice organization



JULIAN WANG

Peer Advocate

The Arc of Larimer County



BACKGROUND: COLORADO'S CASE MANAGEMENT REDESIGN (CMRD)

HEALTH MANAGEMENT ASSOCIATES

WHY IS THIS CHANGE COMING?

Colorado's Redesigned Case Management system will offer:

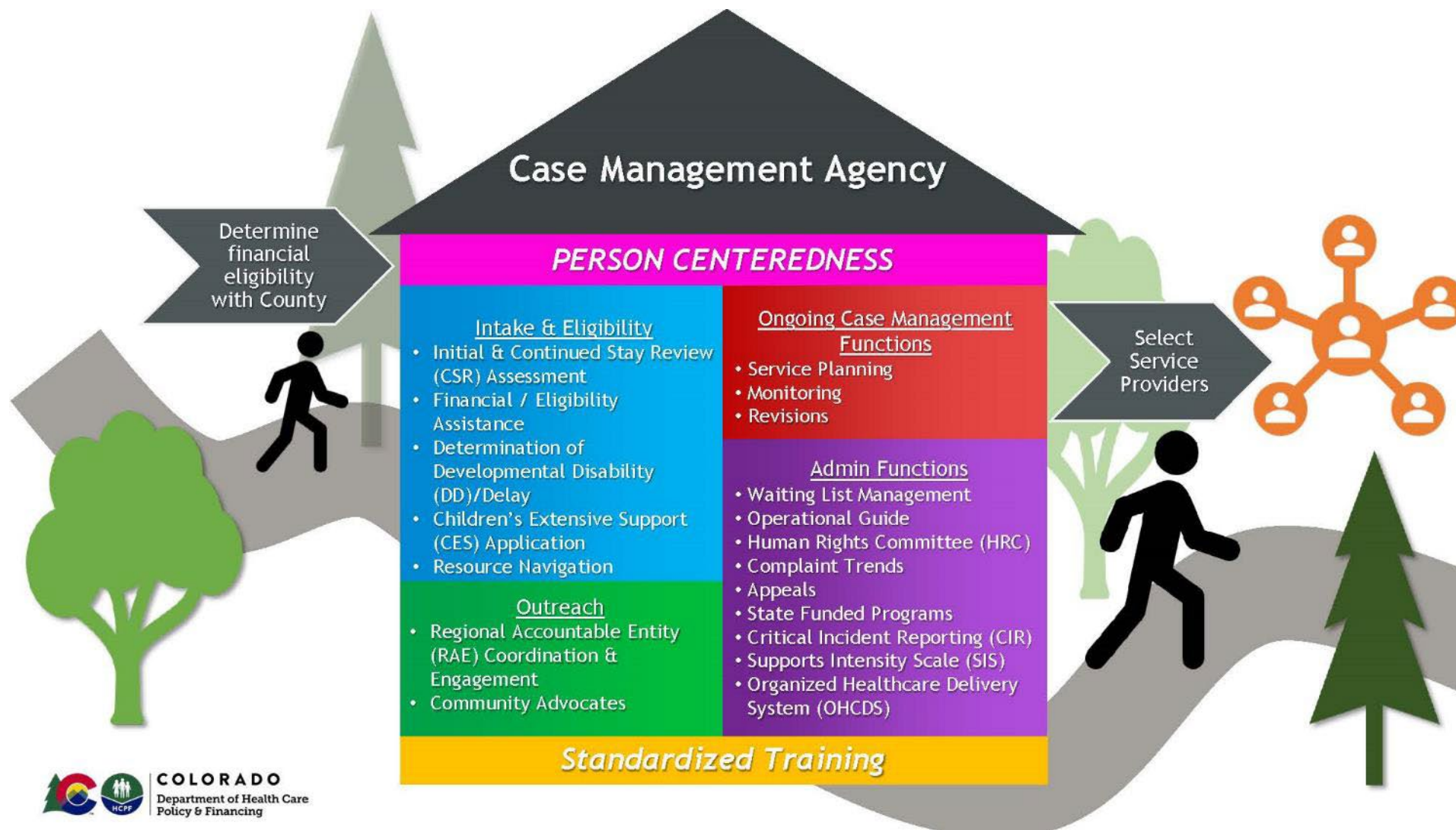
- Person-centered experience for all members
- Improved equity
- Easier to navigate, one place to go
- Streamlined operations and increased administrative efficiencies
- Innovations further increase system stability, quality, and accountability



The goal:

Make case management work better for everyone!

CO CASE MANAGEMENT REDESIGN (CMRD)



CMRD CAPACITY BUILDING PROJECT

The Department of Health Care Policy & Financing has contracted with Health Management Associates (HMA) to help current case management agencies (CMAs) and stakeholders get ready for this change:

- Work with CMAs to figure out what they need
- Provide technical assistance for CMAs to develop transition plans and get ready for what's next
- Support CMAs and stakeholders through the change process
- Engage with CO HCBS stakeholders to help with the transition through Learning Collaboratives and Community Conversations



SUPPORTING EACH PERSON

Colorado currently has three different kinds of case management organizations, Single Entry Point Agencies (SEPs), Community-Centered Boards (CCBs) and Private Case Management Agencies (PCMAS), each serving different groups of people and different home and community-based waivers:

- Brain Injury waiver
- Community Mental Health Supports waiver
- Elderly, Blind and Disabled waiver
- Spinal Cord Injury waiver
- Developmental Disabilities waiver
- Supported Living Services waiver
- Children's Home and Community Services waiver
- Children with Life Limiting Illness waiver
- Children's Extensive Support waiver
- Children's Habilitation Residential Program waiver

Under the new Case Management system, there will only be **one agency for each area** offering case management for ALL of the waivers and populations. This will make it easier for each person to find and access the right services for them.





DISCUSSION: CASE MANAGEMENT FOR PEOPLE WITH DISABILITIES

HEALTH MANAGEMENT ASSOCIATES

WHAT WAS MOST IMPORTANT TO YOU TODAY?



QUESTIONS?

Please contact us if you have additional questions, suggestions, or ideas

- Sharon Lewis
slewis@healthmanagement.com
- Stephanie Denning
sdenning@healthmanagement.com

PLEASE OFFER YOUR FEEDBACK:

<https://www.surveymonkey.com/r/GenARPA>

