

Colorado CCBHC Stakeholder Forum

October 16, 2024

The Department of Health Care Policy and
Financing



COLORADO

Department of Health Care
Policy & Financing

HCPF Mission

Improving Health care equity, access, and outcomes for the people we serve while saving Coloradans money on health care and driving value for Coloradans

BHA Mission

Co-create a people-first behavioral health system that meets the needs of all people in Colorado



Today's Agenda:

- Welcome & Review of CCBHC Planning Grant Application Timeline - 5 mins
- Data Collection strategy - 30 mins
- Large Group Discussion - 20 mins
- Closing Thoughts - 5 mins

Colorado's CCBHC Timeline



July 2024-Sept 2024	• Stakeholder Engagement, Exploration, Grant Preparation
Aug 2024-Sept 2024	• Planning Grant Drafting
September 12, 2024	• Planning Grant Application Submitted to SAMHSA
December 1, 2024	• Anticipated Planning Grants Awarded
December 31, 2024	• Anticipated Grant Start Date
Jan 2025- Dec 2025	• Develop System Changes
October 2025	• CCBHC Certification Process Implemented
December 2025	• Demonstration Application Submitted to SAMHSA
December 30, 2025	• Planning Grant End Date
March 2026	• States Added to Demonstration Program



2024 CCBHC Planning Grant

- HCPF & BHA have engaged HMA to support the application effort
 - ✓ **Sept 11 - Application Submitted**
 - **Oct-Nov - Continued CCBHC Stakeholder Forums**
 - ✓ Oct 2, 2024 - PPS Focus Group
 - Oct 16, 2024 - Data Collection Focus Group
 - Nov 6, 2024 - Stakeholder, Committee Discussion
 - Nov 20, 2024 - Stakeholder Feedback Review
 - **December - Anticipated Determination date**

Colorado State Staff

Gwen Gaumond, Senior Project Manager

Jordan Bass, Director of Data Science and Evaluation

Janell Schafer Cody, Acting Technology and Data
Director, BHA

Sally Langston, Data and Analytics Division Director,
HCPF

CCBHC Data Collection

Planning Grant Year Goals:

BHA, with support from HCPF and in partnership with all stakeholder groups, will design the Data Collection and Quality Measure systems and protocol Colorado anticipates are needed for full CCBHC Demonstration Participation.

CCBHC Data Collection

REQUIREMENTS:

CCBHCs must have the capacity to collect, report, and track:

- Encounter data
- Outcome data
- Quality data

Including but not limited to:

- (1) characteristics of people receiving services;**
- (2) staffing;**
- (3) access to services;**
- (4) use of services;**
- (5) screening, prevention, and treatment;**
- (6) care coordination;**
- (7) other processes of care;**
- (8) costs; and**
- (9) outcomes of people receiving services**

CCBHC Data Collection

5 Required Clinic-Collected quality measures:

- Time to Services (I-SERV)
- Depression Remission at 6 months (DEP-REM-6)
- Preventative Care and Screening: Unhealthy Alcohol Use: Screening and Brief Counseling (ASC)
- Screening for Clinical Depression and Follow-up Plan (CDF-CH and CDF-AD)
- Screening for Social Drivers of Health (SDOH)

5 Optional Clinic-Collected quality measures:

- *Preventative Care & Screening: Tobacco use: Screening and Cessation Intervention (TSC)*
- *Child and Adolescent Major Depressive Disorder (MDD): Suicide Risk Assessment (SRA &SRA-A)*
- *Adult Major Depressive Disorder: Suicide Risk Assessment (SRA & SRA-C)*
- *Weight Assessment and Counseling for Nutrition and Physical Activity for children/adolescents (WCC-CH)*
- *Controlling High Blood Pressure (CBP-AD)*

CCBHC Data Collection, Cont.

13 Required State-Collected Measures:

- Patient Experience of Care Survey
- Youth/Family Experience of Care Survey
- Adherence to Antipsychotic Medications for Individuals w/Schizophrenia (SAA-AD)
- Follow-up After Hospitalization for Mental Illness, ages 18+ (FUH-AD)
- Follow-up After Hospitalization for Mental Illness, ages 6-17 (child/adolescent) (FUH-CH)
- Initiation and Engagement of Alcohol and Other Drug Dependence Treatment (IET-AD)
- Follow-up After Emergency Department Visit for Mental Illness (FUM-CH and FUM-AD)
- Follow-up After Emergency Department Visit for Alcohol and Other Drug Dependence (FUA-CH and FUA-AD)
- Plan All-Cause Readmissions Rate (PCR-AD)
- Follow-Up Care for Children Prescribed Attention-Deficit Hyperactivity Disorder (ADHD) Medication (ADD-CH)
- Antidepressant Medication Management (AMM-BH)
- Use of Pharmacotherapy for Opioid Use Disorder (OUD-AD)
- Hemoglobin A1 Control for Patients w/Diabetes (HBD-AD)

2 Optional State-Collected Measures:

- *Use of First-line Psychosocial care for children and adolescents on antipsychotics (APP-CH)*
- *Metabolic Monitoring for Children and Adolescents on Antipsychotics (APM-CH)*

HCPF Data Collection

Member Data - Member data is collected from the application. A variety of demographic data is collected when someone applies for benefits. The source system for this data is the Colorado Benefits Management System (CBMS).

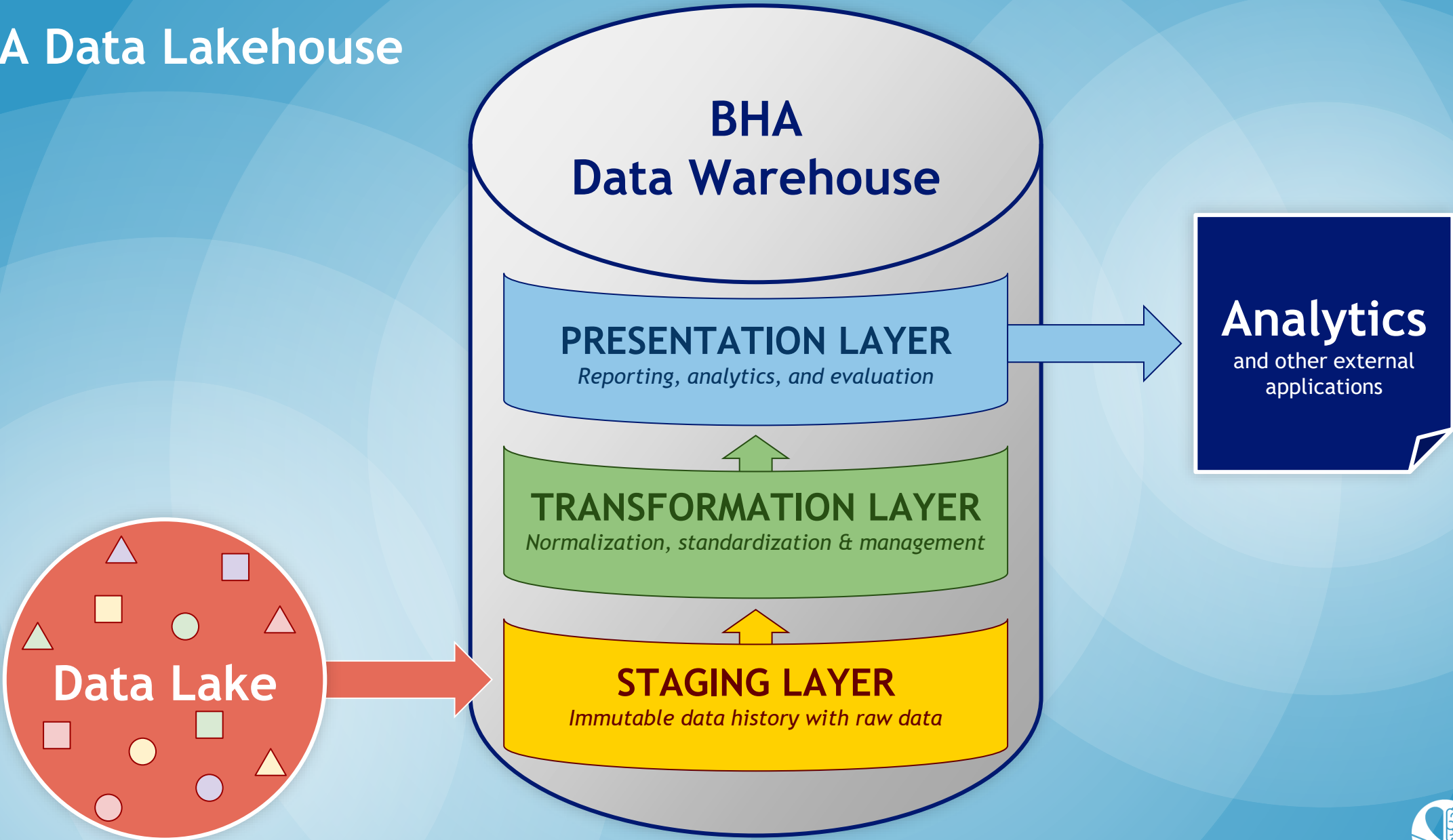
Provider Data - When providers enroll with State programs to provide benefits they have to provide demographic and other information. The source system for this data is interChange (MMIS).

Claims/Encounter Data - Providers submit claim for services provided under fee-for-service contracts and encounter data for services provided under managed care contracts.

BHA Data Collection

- BHA will play a key role in CCBHC data collection
- Data will be stored in a secure, HIPAA-compliant Data Lakehouse structure that will facilitate analytics from multiple sources
- During the CCBHC planning phase, the data model for baseline measures will be established, and an evaluation strategy will be identified. Planning activities will include:
 - Co-developing data models for data collection with community partners
 - Finalizing cross-agency data collection and performance measurements processes

BHA Data Lakehouse



CCBHC & CO Data Collection

Current State

- BHA is actively investing in a technology stack to allow flexible data collection

Future State (Planning Activities)

- BHA and HCPF will work together to create a data collection strategy that respects privacy and minimizes provider burden

Questions/Comments from previous Forums:

Known Concerns:

- Time Commitment, resource commitment & administrative burden of systems changes for providers and State
- Potentially the most expensive implementation component
- Providers have made known their request for additional support and guidance
- How can we use this as an opportunity to align data collection efforts and systems? Can we move towards a non-duplicative system?

Group Discussion

- How do the reviewed Data Collection decisions align with your strategies and priorities?
- What challenges or misalignments should we be aware of?



Questions?

Planning Grant Narrative Feedback

Thanks again to those you submitted feedback on the application narrative

Extended Feedback
Deadline:
November 7, 2024

Next Meeting Dates

- ✓ October 2
- ✓ October 16
- **No Meeting on Oct 30**
- November 6
- November 20

Contact Info

hcpf_safetynetforum@state.co.us

Please include “CCBHC” in subject line

[CCBHC HCPF Webpage](#)