

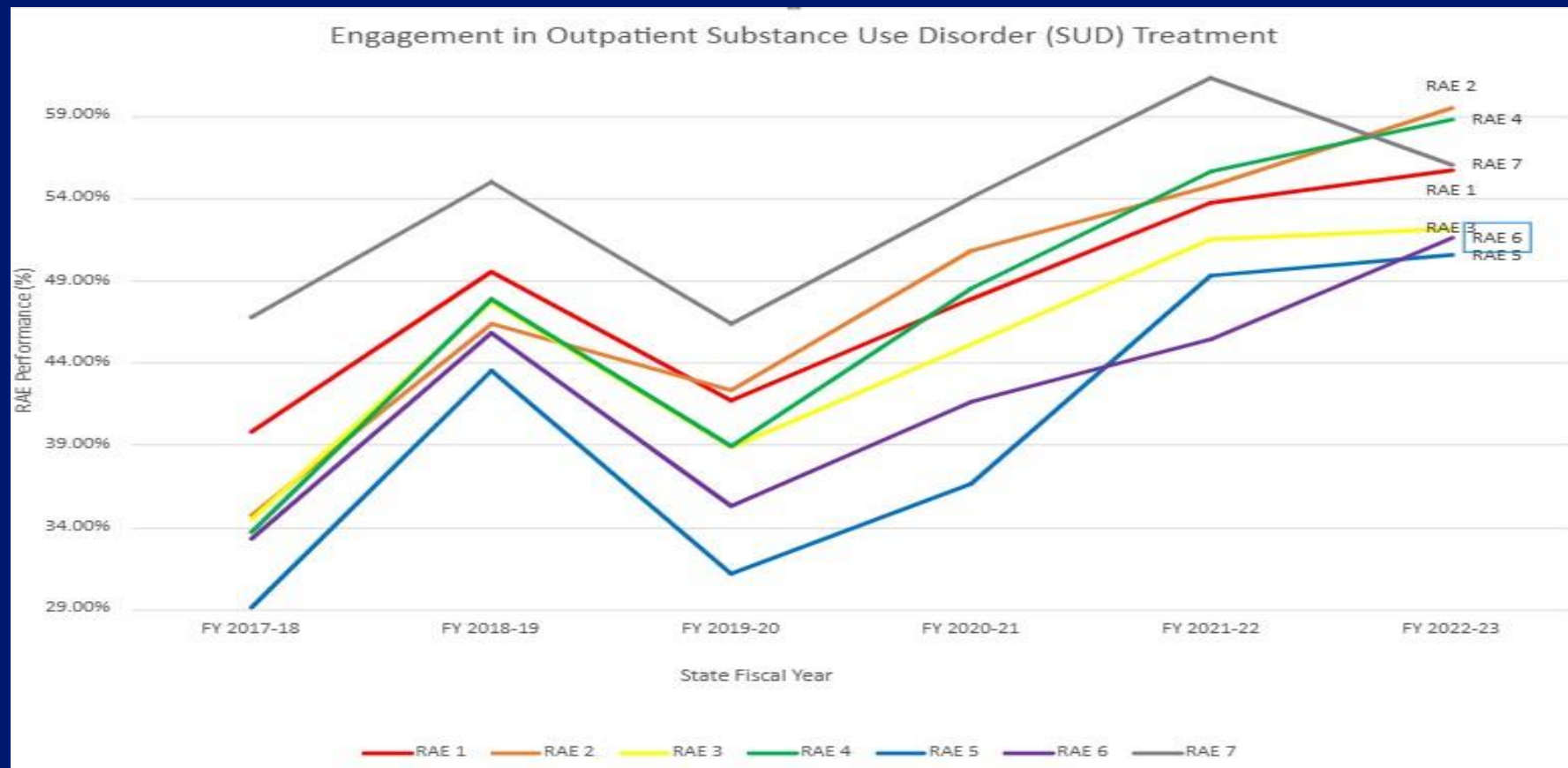
# BHIP Performance Indicators FYs 2018-23

1. Engagement in Outpatient Substance Use Disorder (SUD) Treatment
2. Follow-Up within 7 Days of an Inpatient Hospital Discharge for a Mental Health (MH) Condition
3. Follow-Up within 7 Days of an Emergency Department (ED) Visit for SUD
4. Follow-Up after a Positive Depression Screening
5. Behavioral Health Screening or Assessment for Children in the Foster Care System

For more details on each measure, please refer to the BHIP [specifications](#).

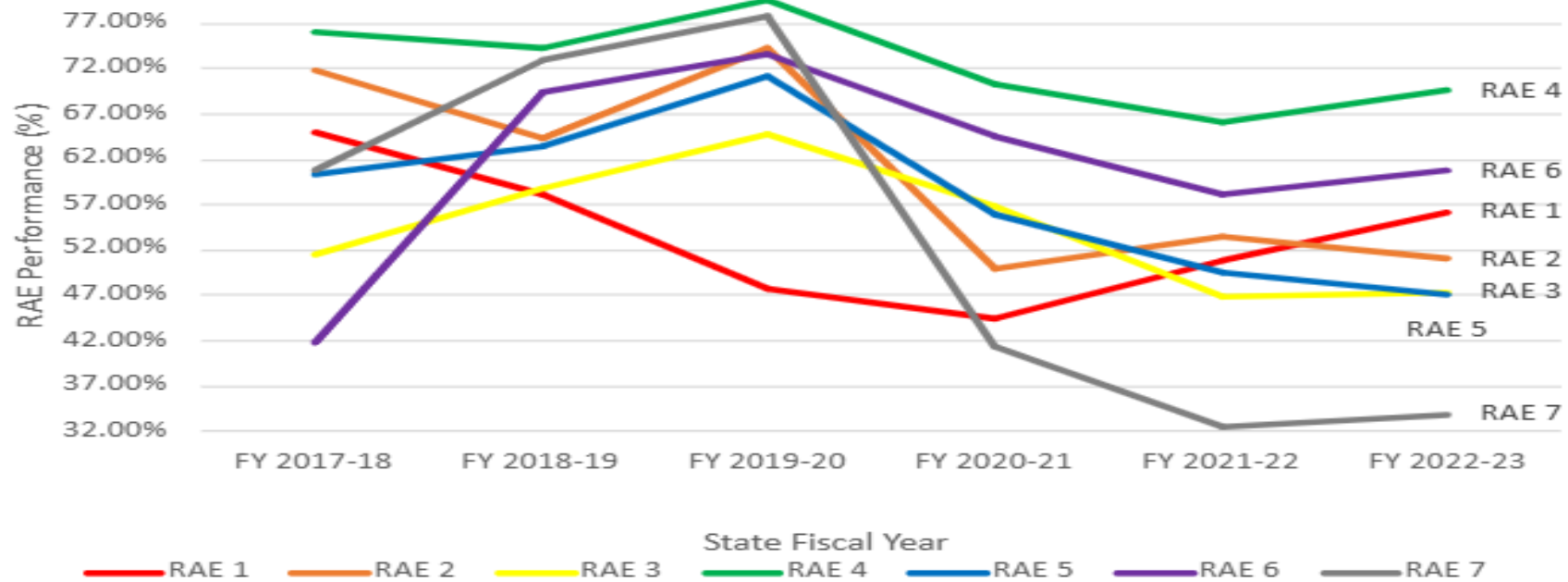
Updated June 2025





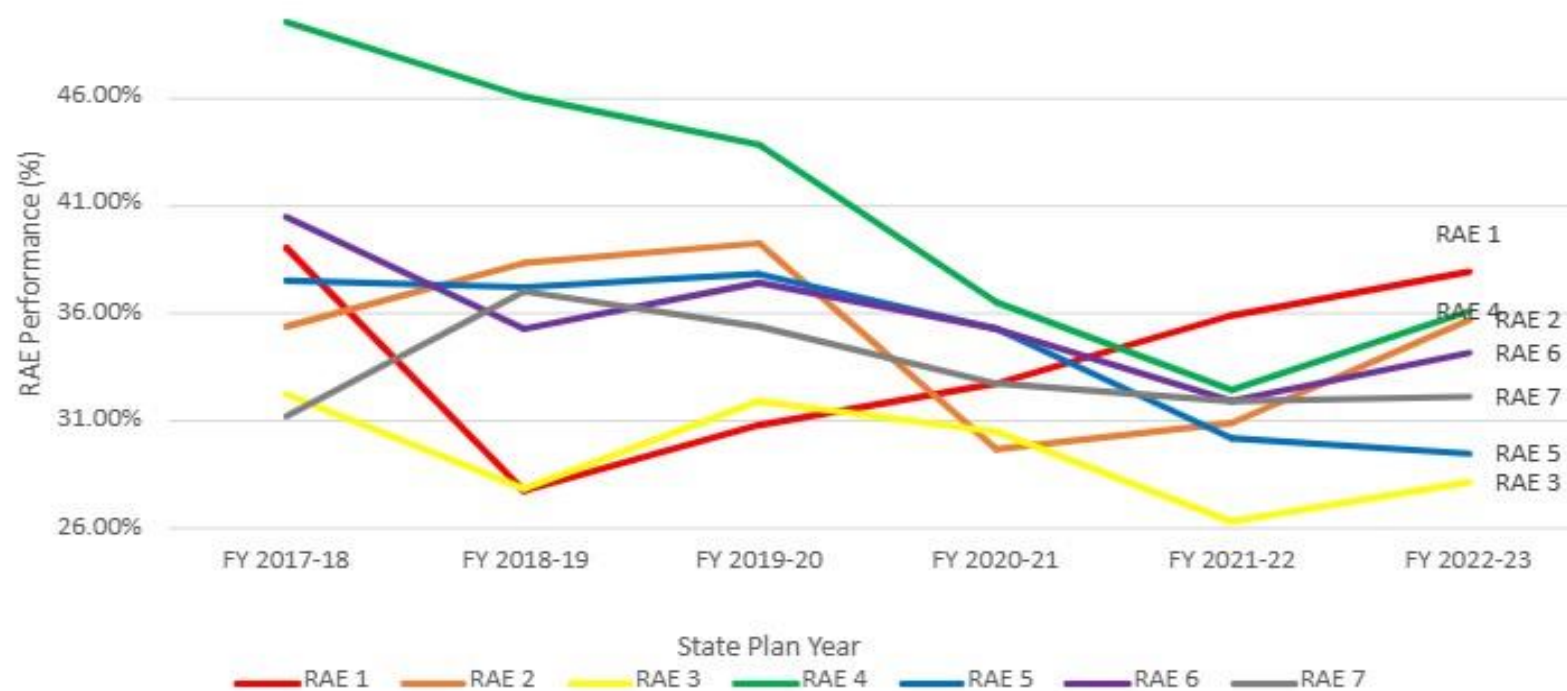
| YEAR  | FY 2017-18 | FY 2018-19 | FY 2019-20 | FY 2020-21 | FY 2021-22 | FY 2022-23 |              |
|-------|------------|------------|------------|------------|------------|------------|--------------|
| RAE 1 | 39.84%     | 49.58%     | 41.72%     | 47.90%     | 53.72%     | 55.76%     |              |
| RAE 2 | 34.72%     | 46.40%     | 42.34%     | 50.80%     | 54.79%     | 59.54%     |              |
| RAE 3 | 34.53%     | 47.75%     | 38.84%     | 45.09%     | 51.53%     | 52.20%     | Goal Met     |
| RAE 4 | 33.75%     | 47.93%     | 38.98%     | 48.51%     | 55.64%     | 58.80%     | Goal Not Met |
| RAE 5 | 29.18%     | 43.54%     | 31.19%     | 36.65%     | 49.33%     | 50.58%     |              |
| RAE 6 | 33.36%     | 45.82%     | 35.29%     | 41.61%     | 45.40%     | 51.62%     |              |
| RAE 7 | 46.77%     | 55.01%     | 46.37%     | 54.10%     | 61.34%     | 56.05%     |              |

## Follow-up within 7 days of an Inpatient Hospital Discharge for a Mental Health (MH) Condition



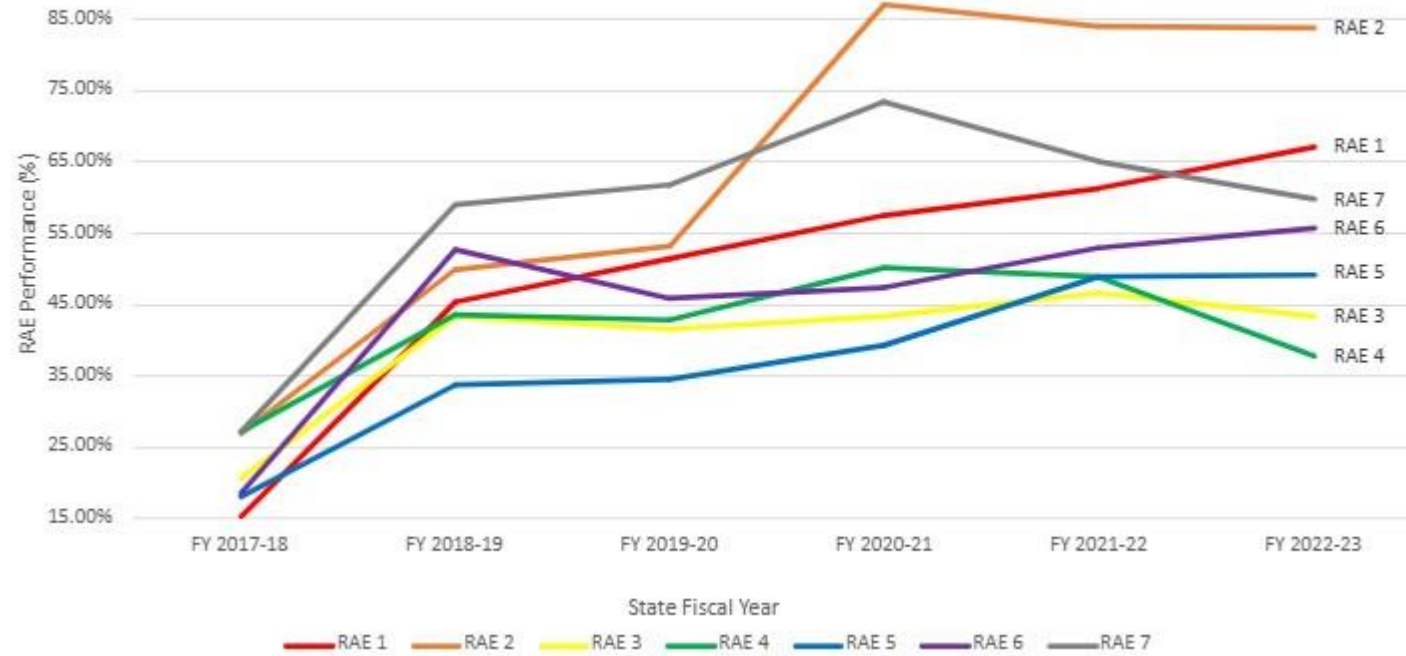
| YEAR  | FY 2017-18 | FY 2018-19 | FY 2019-20 | FY 2020-21 | FY 2021-22 | FY 2022-23 |              |
|-------|------------|------------|------------|------------|------------|------------|--------------|
| RAE 1 | 65.02%     | 58.18%     | 47.66%     | 44.48%     | 50.79%     | 56.24%     |              |
| RAE 2 | 71.82%     | 64.31%     | 74.23%     | 50.07%     | 53.59%     | 51.08%     | Goal Met     |
| RAE 3 | 51.53%     | 58.76%     | 64.71%     | 56.76%     | 46.84%     | 47.43%     | Goal Not Met |
| RAE 4 | 76.17%     | 74.36%     | 79.61%     | 70.43%     | 66.21%     | 69.57%     |              |
| RAE 5 | 60.32%     | 63.56%     | 71.20%     | 56.03%     | 49.46%     | 47.03%     |              |
| RAE 6 | 41.82%     | 69.45%     | 73.69%     | 64.51%     | 58.07%     | 60.81%     |              |
| RAE 7 | 60.86%     | 72.90%     | 77.93%     | 41.42%     | 32.59%     | 33.90%     |              |

## Follow-up within 7 days of an Emergency Department (ED) Visit for Substance Use Disorder



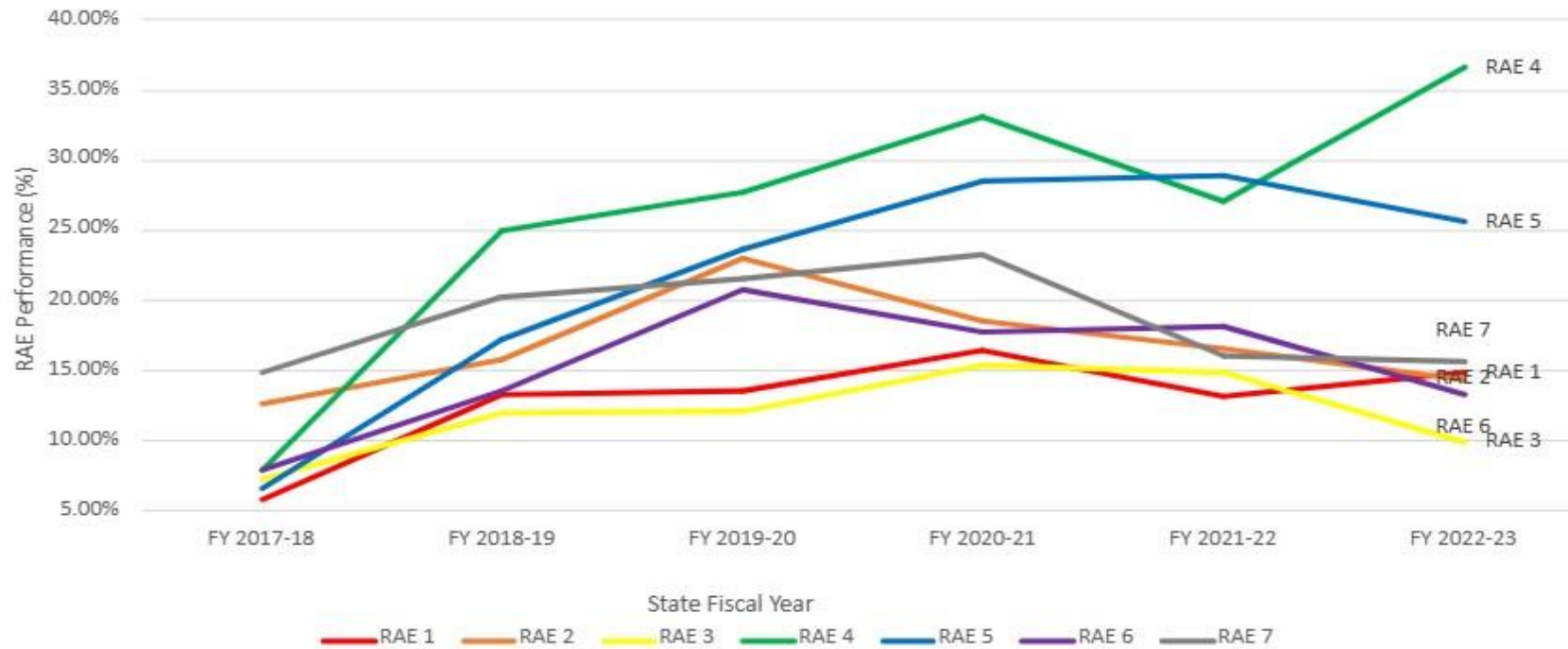
| YEAR  | FY 2017-18 | FY 2018-19 | FY 2019-20 | FY 2020-21 | FY 2021-22 | FY 2022-23 |              |
|-------|------------|------------|------------|------------|------------|------------|--------------|
| RAE 1 | 39.00%     | 27.75%     | 30.85%     | 32.69%     | 35.87%     | 37.88%     |              |
| RAE 2 | 35.34%     | 38.33%     | 39.25%     | 29.64%     | 30.94%     | 35.65%     |              |
| RAE 3 | 32.22%     | 27.83%     | 31.97%     | 30.50%     | 26.33%     | 28.16%     | Goal Met     |
| RAE 4 | 49.49%     | 46.03%     | 43.83%     | 36.49%     | 32.45%     | 36.07%     | Goal Not Met |
| RAE 5 | 37.56%     | 37.22%     | 37.85%     | 35.25%     | 30.20%     | 29.46%     |              |
| RAE 6 | 40.46%     | 35.25%     | 37.42%     | 35.30%     | 31.92%     | 34.15%     |              |
| RAE 7 | 31.17%     | 37.01%     | 35.41%     | 32.75%     | 31.96%     | 32.15%     |              |

Follow-Up after a Positive Depression Screening



| YEAR  | FY 2017-18 | FY 2018-19 | FY 2019-20 | FY 2020-21 | FY 2021-22 | FY 2022-23 |              |
|-------|------------|------------|------------|------------|------------|------------|--------------|
| RAE 1 | 15.32%     | 45.32%     | 51.47%     | 57.49%     | 61.43%     | 67.16%     |              |
| RAE 2 | 26.83%     | 50.00%     | 53.25%     | 87.09%     | 83.99%     | 83.84%     | Goal Met     |
| RAE 3 | 20.70%     | 43.48%     | 41.50%     | 43.47%     | 46.69%     | 43.33%     | Goal Not Met |
| RAE 4 | 27.10%     | 43.64%     | 42.87%     | 50.19%     | 49.03%     | 37.80%     |              |
| RAE 5 | 18.12%     | 33.82%     | 34.64%     | 39.21%     | 48.98%     | 49.28%     |              |
| RAE 6 | 18.61%     | 52.70%     | 45.87%     | 47.48%     | 52.98%     | 55.74%     |              |
| RAE 7 | 27.26%     | 58.99%     | 61.75%     | 73.39%     | 65.09%     | 59.70%     |              |

## Behavioral Health Screening or Assessment for Children in the Foster Care System



| YEAR  | FY 2017-18 | FY 2018-19 | FY 2019-20 | FY 2020-21 | FY 2021-22 | FY 2022-23 |              |
|-------|------------|------------|------------|------------|------------|------------|--------------|
| RAE 1 | 5.85%      | 13.29%     | 13.57%     | 16.39%     | 13.12%     | 14.86%     |              |
| RAE 2 | 12.63%     | 15.76%     | 23.00%     | 18.60%     | 16.56%     | 14.38%     |              |
| RAE 3 | 7.29%      | 12.05%     | 12.17%     | 15.41%     | 14.88%     | 9.92%      | Goal Met     |
| RAE 4 | 7.94%      | 24.93%     | 27.78%     | 33.11%     | 27.05%     | 36.59%     | Goal Not Met |
| RAE 5 | 6.58%      | 17.20%     | 23.70%     | 28.57%     | 28.93%     | 25.58%     |              |
| RAE 6 | 7.94%      | 13.59%     | 20.79%     | 17.82%     | 18.09%     | 13.25%     |              |
| RAE 7 | 14.93%     | 20.26%     | 21.51%     | 23.29%     | 16.12%     | 15.73%     |              |

Note: This data does not include DH in SFY20-21



Questions can be directed to Nicole Nyberg,  
Quality Performance Unit Supervisor, at  
[Nicole.Nyberg@state.co.us](mailto:Nicole.Nyberg@state.co.us)