

Overview of New Assessment and Person- Centered Support Plan Care & Case Management System Person-Centered Budget Algorithm

November 20, 2020

Today's Discussion

Background & Overview of Case Management Redesign

New Assessment & Person-Centered Support Plan

New Care & Case Management System

Person-Centered Budget Algorithm

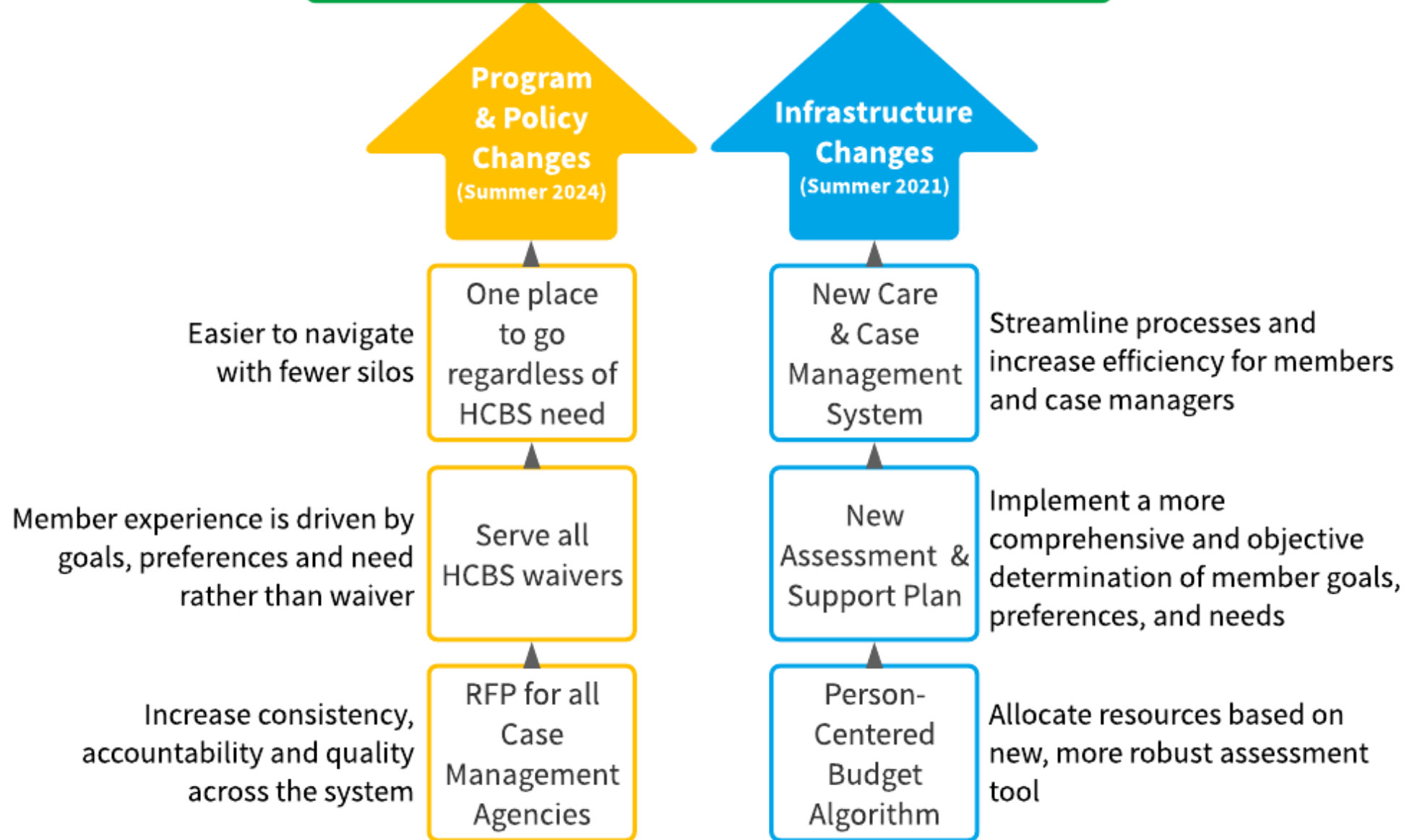
How It All Fits Together

Background

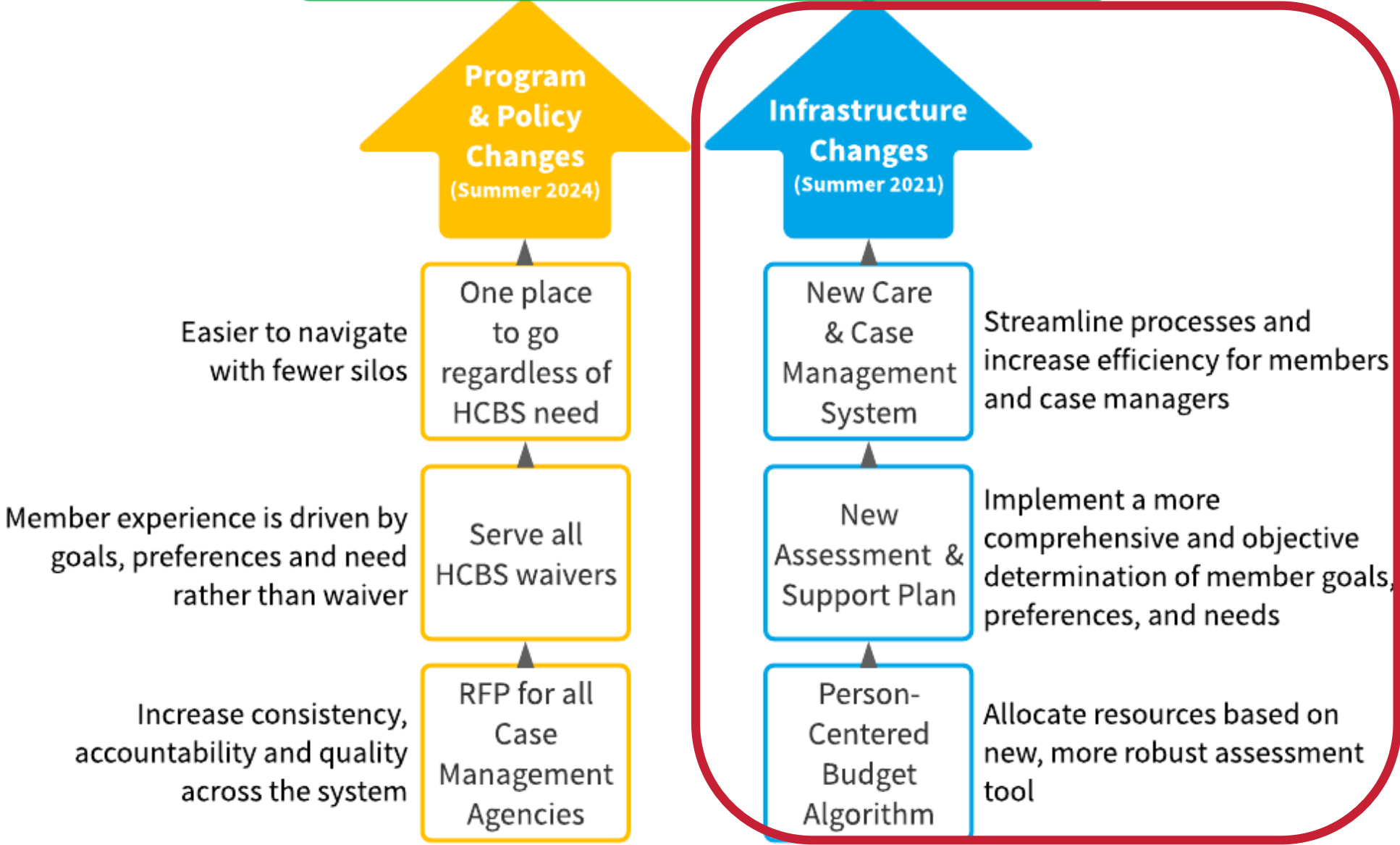
- Executive Order and CLAG
- One place to go for all waivers
- Conflict-Free Case Management
- New Assessment and Person-Centered Support Plan Process

=Case Management Redesign

Colorado Case Management Redesign



Colorado Case Management Redesign



New Assessment & Person-Centered Support Plan Overview

New Assessment & Person-Centered Support Plan

- After years of development with stakeholders, the new Assessment and Person-Centered Support Plan are being finalized
- Provides more comprehensive assessment to inform eligibility and person-centered support planning (does not include financial eligibility)
- Unified process for all programs and people accessing LTSS
- Eliminates need for most of the other existing tools
- Plan to implement new Assessment and Person-Centered Support Plan July 1, 2021

Pilot Overview

The new Assessment and Person-Centered Support Plan Pilot took place from March 2019 - May 2020 and was conducted with 644 participants seeking or receiving LTSS and 20 Case Management Agencies (10 Community Centered Boards, 10 Single Entry Points).

Phase 1

- Tested the content and automation flow of the new Assessment and Person-Centered Support Plan
- Conducted Comparative Analysis of the ULTC 100.2 item responses to the new Level of Care (LOC) Screen item responses in the new Assessment
- Established objective criteria for Nursing Facility & Hospital LOC using new Assessment items that minimized impact on eligibility
- Tested reliability

Phase 2

- Assessed the workflow of the Assessment process and automation within the new Care & Case Management System
- Allowed case managers to become familiar with the new Assessment and Person-Centered Support Plan content and automation

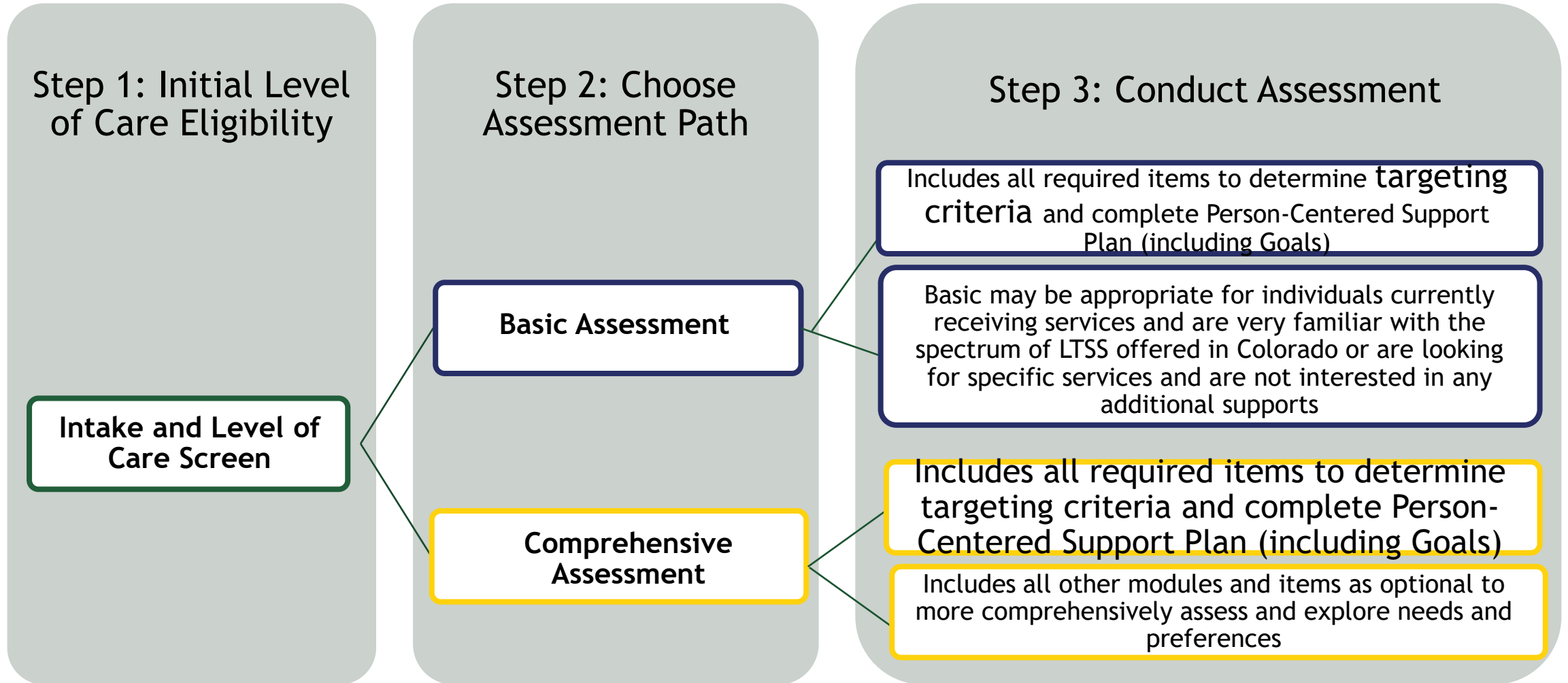
Time Study

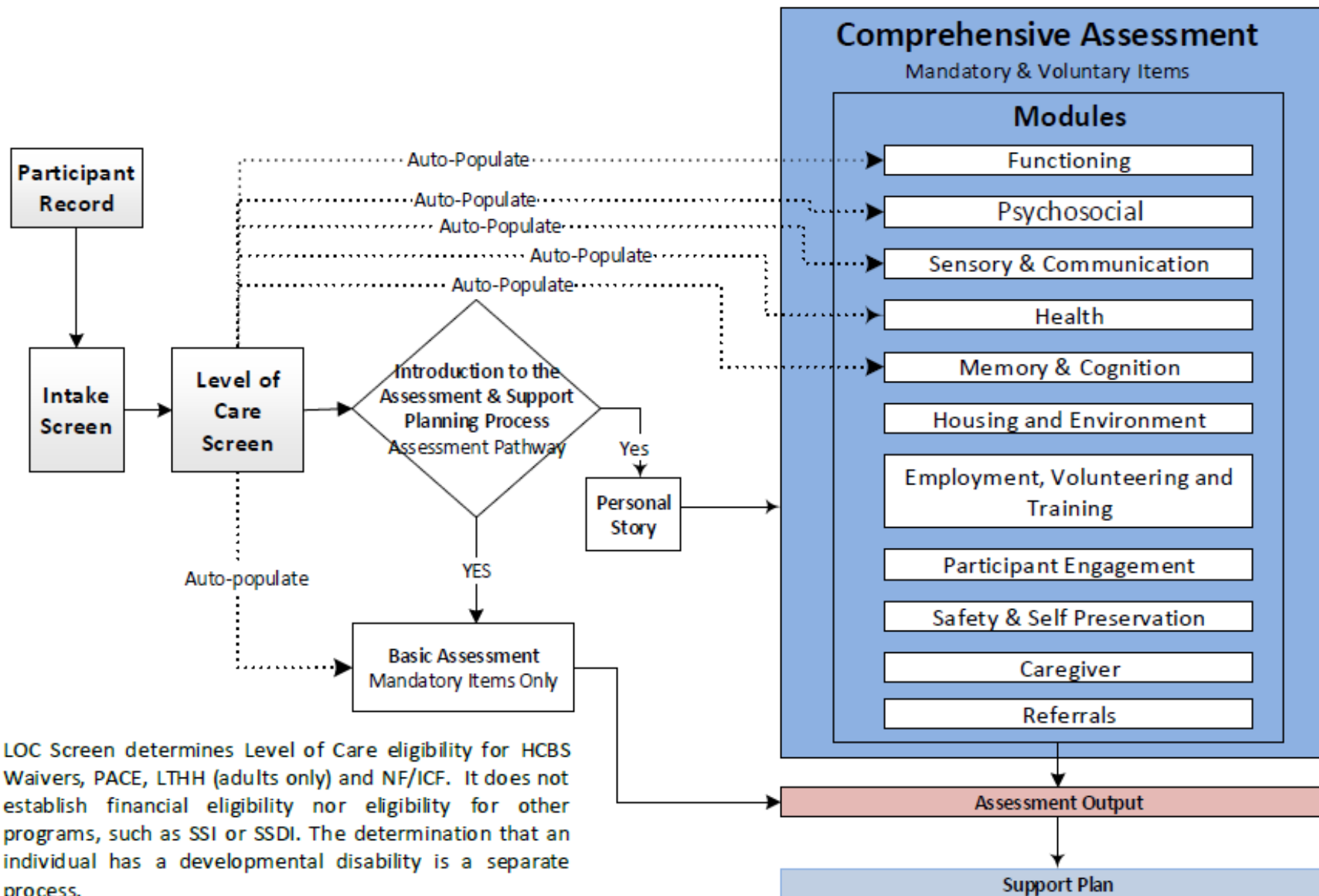
- During the Pilot, case managers conducted the Comprehensive Assessment and Person-Centered Support Plan to understand how long the process took
- Determined that the average time for completion of the Comprehensive was 266 minutes (~4 hours and 25 mins), the longest time was 309 minutes (adults with IDD) and the shortest time was 231 minutes (for children with IDD)

Post-Pilot Work

- A major component of the Pilot was to streamline the process using a variety of approaches, including results from previous efforts, new statistical analyses and input from members, case managers, stakeholders, and Department staff
- Changes were made to the process based on the information, including:
 - Removing and/or simplifying items
 - Reducing redundancies
 - Streamlining the flow of the process, such as grouping similar constructs together
 - Identifying opportunities for enhancements and coordination in the Care & Case Management System
- Between July-September 2020, the Department finalized the new Assessment and Person-Centered Support Plan process
- Now focused on automating the Assessment and Person-Centered Support Plan, including outputs to be used in PCBA and Person-Centered Support Plan

New Assessment Process





LOC Screen determines Level of Care eligibility for HCBS Waivers, PACE, LTHH (adults only) and NF/ICF. It does not establish financial eligibility nor eligibility for other programs, such as SSI or SSDI. The determination that an individual has a developmental disability is a separate process.

New Assessment Modules Summaries

- **Intake Screen:** Collects basic information about the individual. Information obtained through the Intake Screen is used to inform whether the individual should receive or wants to receive an assessment.
- **Level of Care Screen:** Pulls the items necessary to determine and verify that the individual meets level of care (LOC) prior to completing the broader assessment.
- **Personal Story:** Allows the individual an opportunity to provide information that she or he feels is important for providers and others providing support to know. This module is voluntary and can be completed at the individual's convenience online or with the Case Manager during the assessment process. This information is collected early in the process so that the assessor can consider the individual's goals and objectives from the beginning of the assessment and support planning process. Two versions of this module were developed, 1) for individuals ages 0-7 and those with significant cognitive impairments and 2) individuals ages 8+ without significant cognitive impairments.
- **Case Manager Introduction:** Facilitates a discussion between the case manager and individual around which assessment path, Basic or Comprehensive, the *individual* would like to follow.

New Assessment Modules Summaries, cont.

- **Functioning:** Assesses the needs, strengths and preferences of the individual in performing and receiving support for 1) Activities of Daily Living (ADL) such as dressing, eating and bathing, and 2) Instrumental Activities of Daily Living (IADL) such as housekeeping, meal preparation and shopping. The module also includes needs for training or assistive devices to increase independence whenever possible. Specific items are skipped based on the individual's age. There are two versions of the functioning module that are tailored to specific age groups: ages 0-3 and 4+.
- **Health:** Assesses health status of the individual and needs for support or treatment to maintain health. This module also offers brief screening for 1) health risks that could indicate a need for further follow-up with a physician or agency, and 2) undiagnosed brain injury (traumatic or acquired).
- **Memory and Cognition:** Assesses the current functional status of the person to recall and understand information, make judgments, express ideas, and make decisions necessary for daily life.
- **Psychosocial:** Assesses the presence and intensity of behavioral needs and provides an initial screening to determine the need for a referral to assess and treat depression, suicidal ideation and substance abuse, compulsive gambling, and tobacco usage.

New Assessment Modules Summaries, cont.

- **Sensory and Communication:** Contains items related to hearing and vision, functional communication, and sensory integration. In addition to looking at needs, this module considers training and assistive devices to increase independence and community inclusion. In addition to the core module, a supplement has been developed to collect age-specific information about functioning.
- **Employment, Volunteering and Training (EVT):** Explores interests in work, a volunteer position, or education and training opportunities and to find out what barriers exist for the individual in those areas. The items will also help to identify the support needed to achieve the outcomes the individual would like to see.
- **Housing and Environment:** Contains items related to the individual's current living situation, environmental safety and quality, and interests/needs for housing and environment that support and maximize independence of the individual. This module also helps to identify transitional needs for individuals leaving institutions or hospitals or those who may be in temporary housing or be homeless.
- **Caregiver:** Assesses the level of support provided by informal caregiver(s) and is designed to be used to 1) identify situations in which relief or support is critical to the continuation of informal caregiving and 2) identify situations in which paid supports should be initiated.

New Assessment Modules Summaries, cont.

- **Individual Engagement:** Captures the individual's desire and needs related to advocacy. This includes looking at the need/desire for training and assistance to enhance engagement and control of service planning and service delivery. This module also identifies individual preferences for how information about services is obtained and interest in individual direction. Two versions of this module were developed, 1) for individuals ages 0-13 and those with significant cognitive impairments and 2) individuals ages 14+ without significant cognitive impairments.
- **Safety and Self-preservation:** Evaluates the individual's capacity and need for assistance in personal safety and self-preservation. This module addresses the need for supervision and oversight. It also includes items about the need for training to avoid abuse, neglect or exploitation and the supports necessary to ensure the health and welfare of the individual. Collects information about supervision and support needs across a variety of settings, including home, community, and day programs, and provides space for assessors to document additional information that was not covered in the assessment.
- **Medical Fragility Module:** Identifies additional supports needed because of medical complexity and/or fragility.



Questions?



New Care & Case Management System



COLORADO

Department of Health Care
Policy & Financing

Care & Case Management System

- Developing a new Care & Case Management System that combines into a single IT system:
 - New Assessment and Person-Centered Support Plan processes
 - Service authorization
 - Reporting functions of case management
- Will replace other systems currently used (does not replace financial eligibility systems)
- Target Implementation date is July 1, 2021

Automation

- New Assessment and Person-Centered Support Plan will be automated into the new Care & Case Management System (CCM)
- The Care & Case Management System will produce Assessment, Person-Centered Support Plan and Person-Centered Budget Algorithm outputs to be used by the Individual and Case Manager during the person-centered support planning process
- Case management functions existing across several systems will be consolidated into the new Care & Case Management System

Materials To Be Posted Soon

1. Crosswalk of items in Comprehensive and Basic Assessments
2. Draft Assessment and Person-Centered Support Plan training manuals updated to reflect Pilot feedback
3. Sample Assessment and Person-Centered Support Plan outputs

Person-Centered Budget Algorithm (PCBA) Development and Update

What is a Person-Centered Budget Algorithm (PCBA)?

- Used for all Health First Colorado Home and Community-Based Services (HCBS) waiver programs
- Built on the [new Colorado Assessment data](#) (not the SIS or other existing tools)
- Assigns a range of resources for individuals based on assessment process
- Used alongside person-centered planning process to identify services needed to support individual

Why a Person-Centered Budget Algorithm (PCBA)?

- Important aspect of making sure people get the right services, at the right time, in the right place
- Objective method for assigning resources versus relying strictly on case manager's subjective judgement
- Based on new Assessment, with much more information
- Department priority to get it right - working closely with stakeholders and staff on teams across the offices

PCBA Development Stages

Hypothesis

There exist relationships between member characteristics and resource need.

Testing

Group member characteristics and analyze to identify patterns.

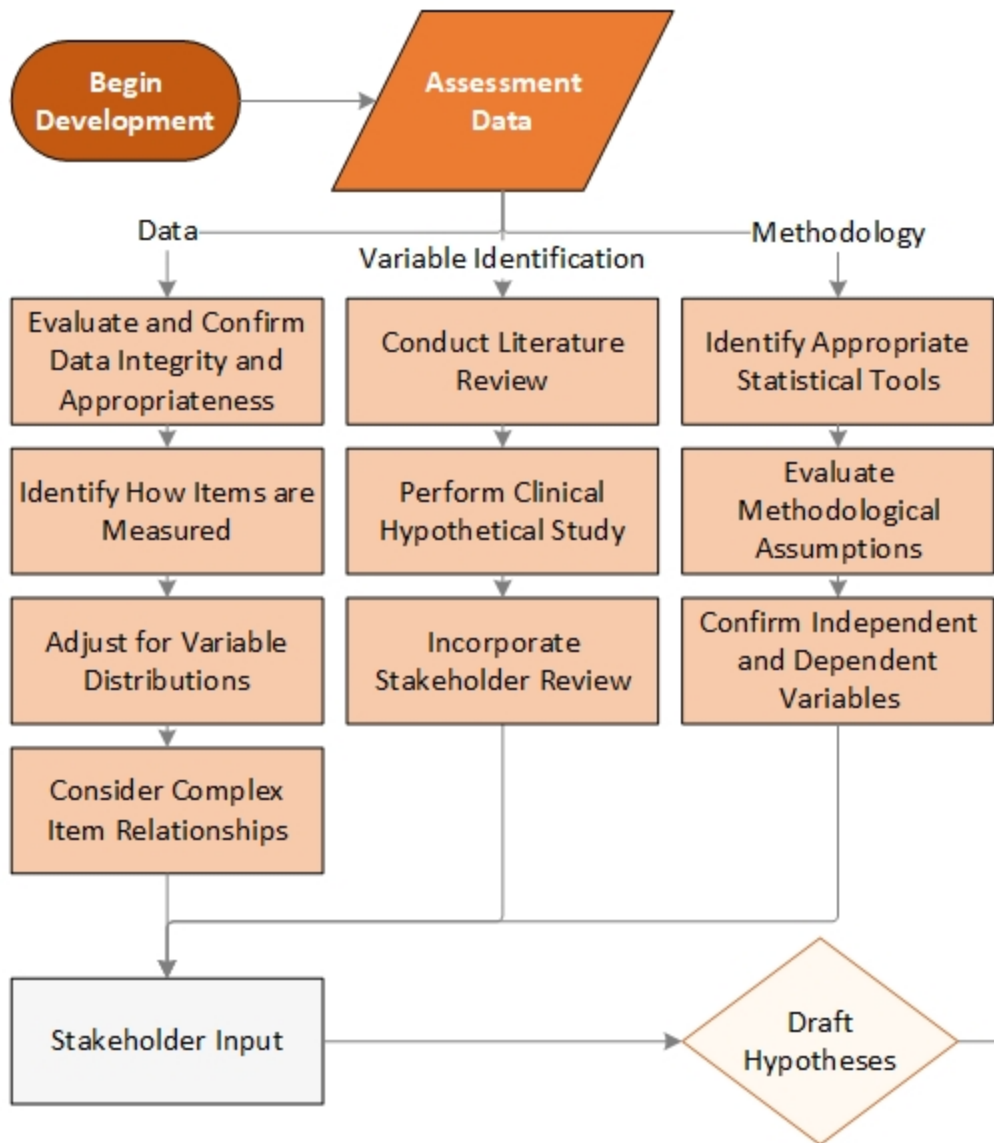
Refinement

Evaluate patterns' ability to predict a range of future service needs.

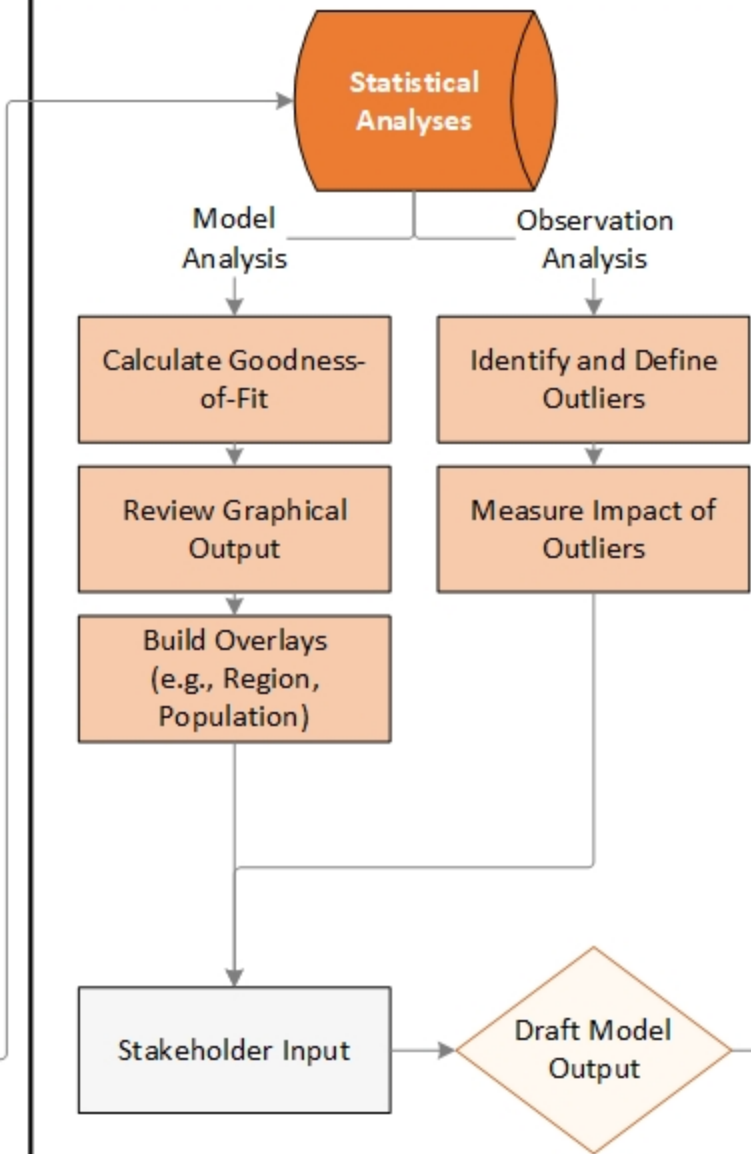
Colorado Person-Centered Budget Algorithm (PCBA) Draft Workflow

PCBA Development Stages

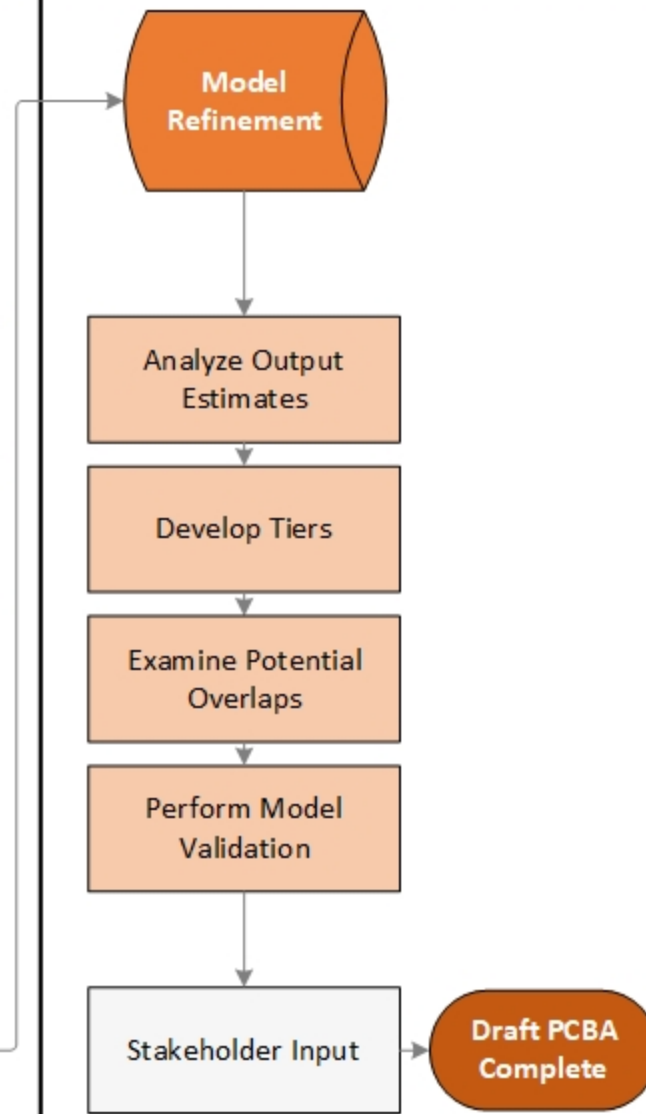
Hypothesis



Testing



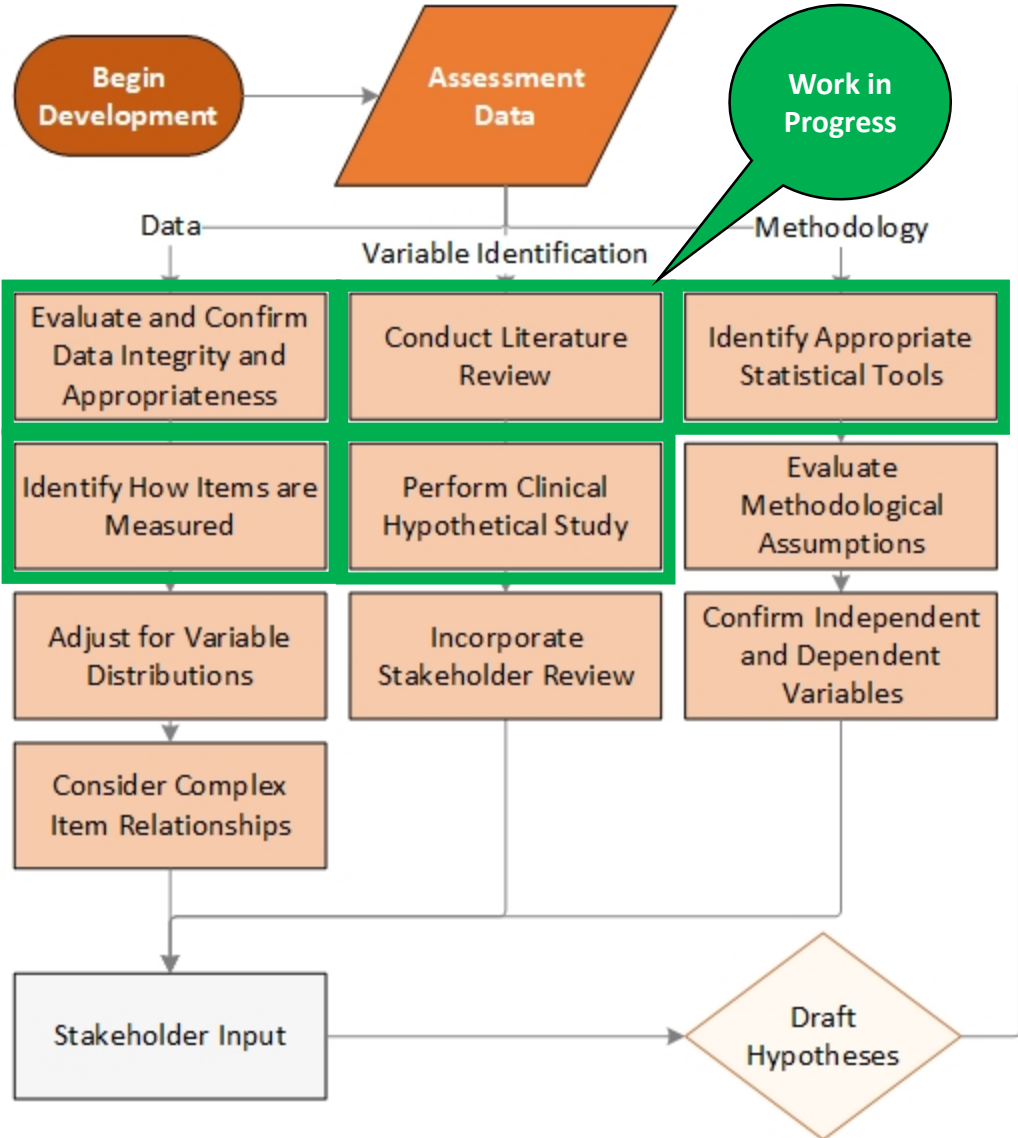
Refinement



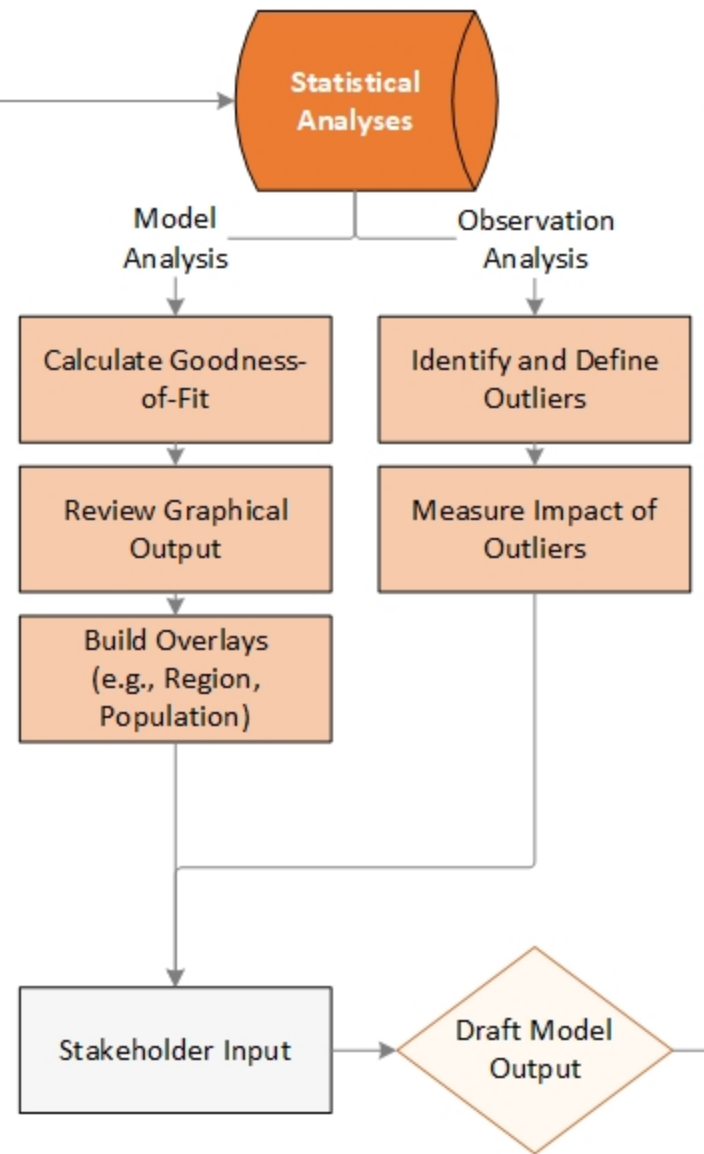
Colorado Person-Centered Budget Algorithm (PCBA) Draft Workflow

PCBA Development Stages

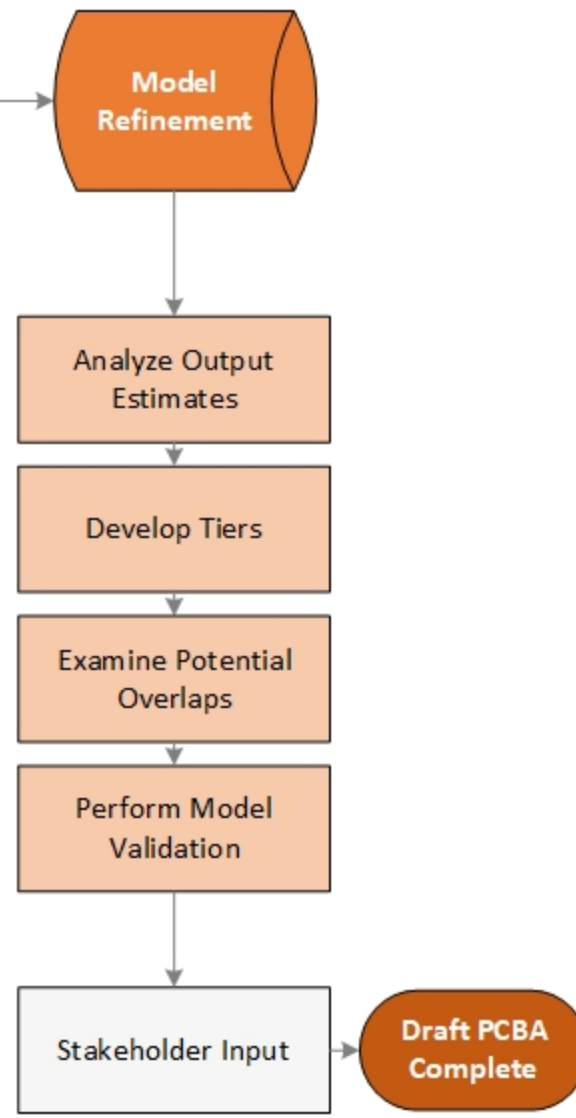
Hypothesis



Testing



Refinement



Key Areas for Stakeholder Input

- PCBA Model Development
- Stratification and Allocation Modeling
- CDASS/IHSS Recommendations
- PCBA Exceptions Process Recommendations
- PCBA Implementation Recommendations



Questions?



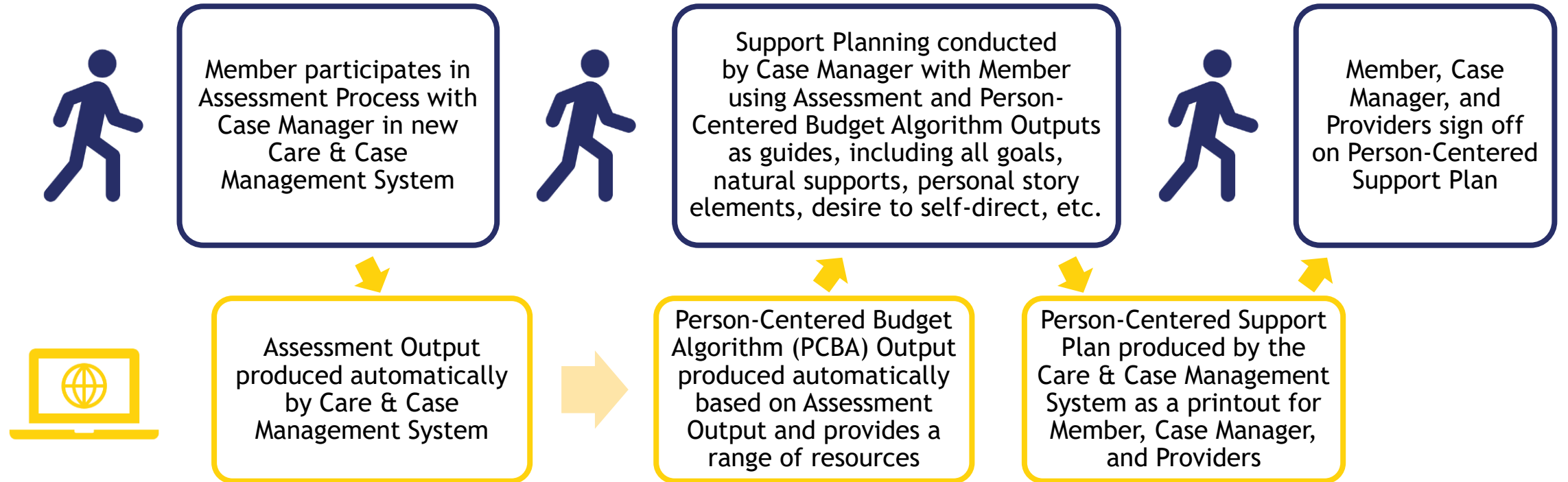
How It All Fits Together



COLORADO

Department of Health Care
Policy & Financing

NEW Assessment and Support Planning Process



Work Going on in 2020-21

Automate Assessment and Support Plan in Care & Case Management System

Develop and Implement **Case Manager Training**

Produce and Distribute Materials for **Member Orientation to New Process**

Develop **Person-Centered Budget Algorithm (PCBA)**

Stakeholder Engagement to Develop **PCBA Exceptions Process**

Waiver Amendments and Rule Changes



Questions?

Stay Engaged

- [LTSS Assessment and Support Plan Webpage](#)
- [Person-Centered Budget Algorithm Webpage](#)
- [Office of Community Living Stakeholder Webpage](#)
- [Sign up](#) for Constant Contact email announcements

Contact Info

Tasia Sinn
Senior Policy Analyst
Tasia.Sinn@state.co.us

Thank you!