



Northeast Health Partners

RAE 2

PIAC Presentation

April 16, 2025

Key Changes for NHP

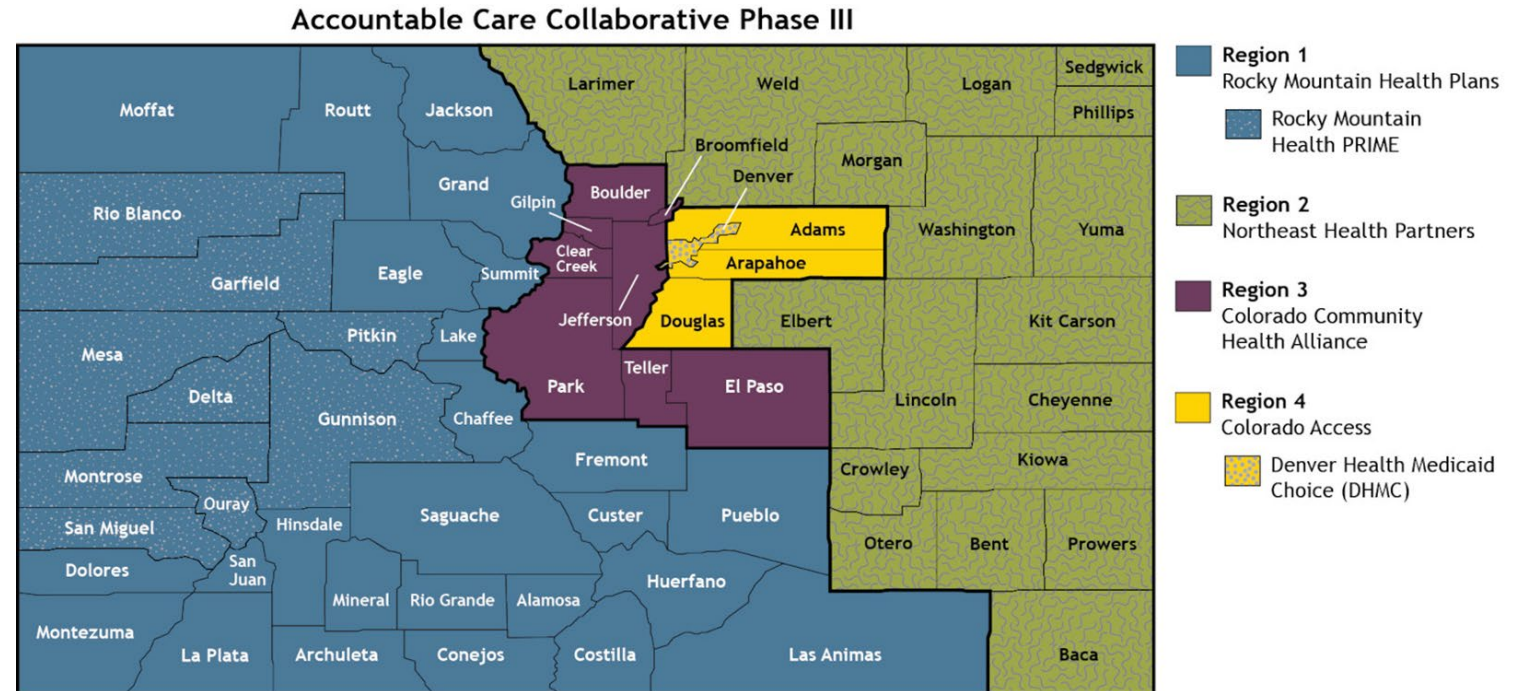
- New Logo



- Administrative support from Carelon is discontinuing 7.1.2025
- NHP will be main contact for all services
- Expanding from 10 counties to 18; Population is increasing from 78,000 to 145,000
- Expanded Community Locations
- Violet platform is being utilized to build health equity skills
- Behavioral Health Partnership with Rocky Mountain Health Plans
 - Behavioral Health Network
 - Utilization Management
 - Claims Processing

County Level Changes

- 8 New Counties
 - Kiowa, Crowley, Otero, Bent, Prowers, Baca- Working with HCI/Providers on transitioning
 - Elbert- Working with COA
 - Larimer: Working with RMHP and holding regular meetings/office hours in region with providers, members, DHS



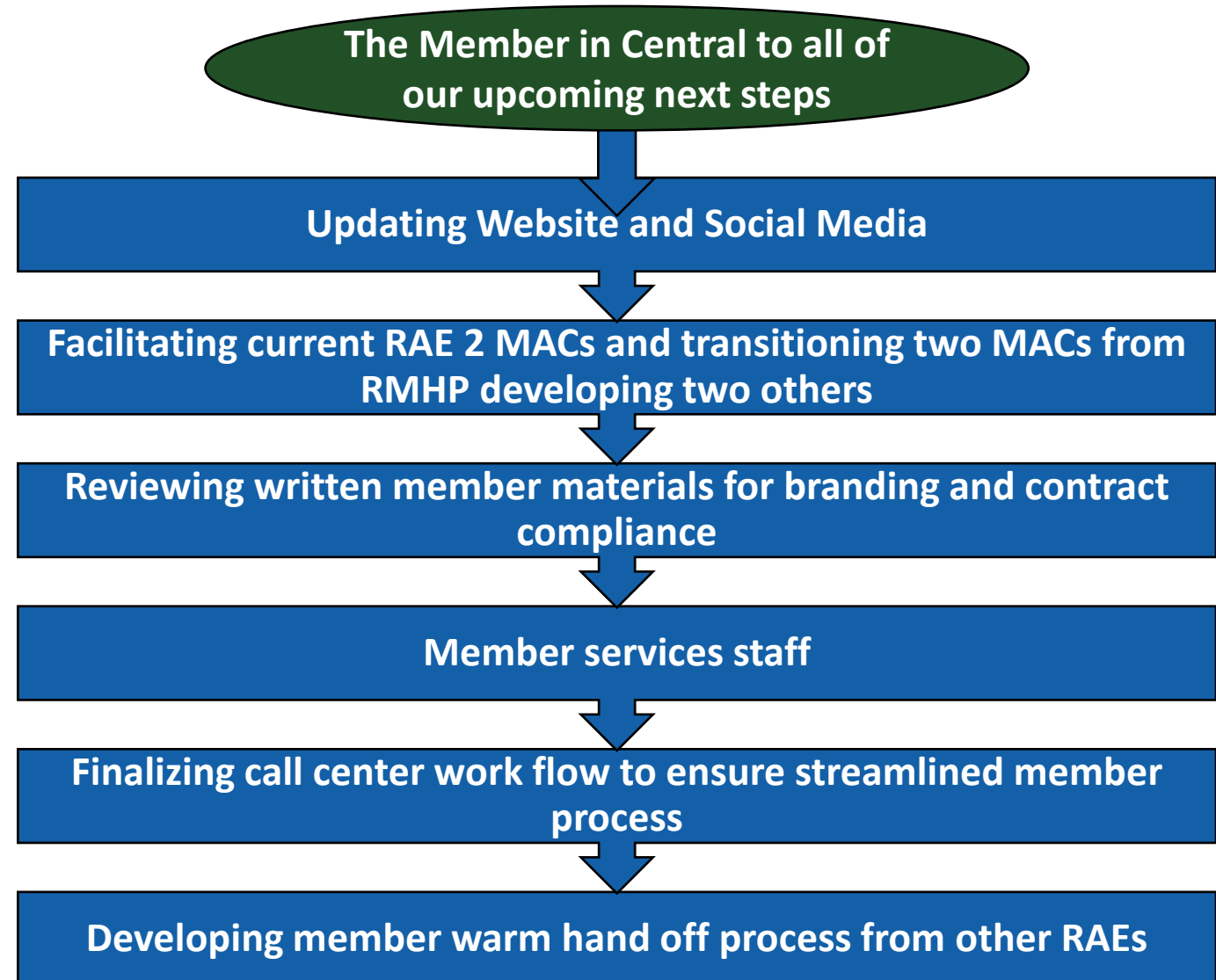
Continuing Activities in Phase III

- **Data Driven Services**
- **Health Neighborhood Supports**
- **Person Centered Care**
- **Community Based Care Coordination**
- **Integrated Care across providers**

Member Services and Member Engagement

- **Member Advisory Committees (MAC):**

- Larimer County MAC (Continuing)
- Deaf & Hard of Hearing MAC (Continuing)
- Northeast Counties MAC
- Youth Voice Council
- Member Review Committee
- Member Health Equity Task Force



Care Coordination Activities

- **Monitor Performance**
- **Coordinate Member Transitions of Care**
- **Train Providers**
- **Develop tools and systems**
- **Collaborate with Key Partners**

Provider Network Outreach and Engagement

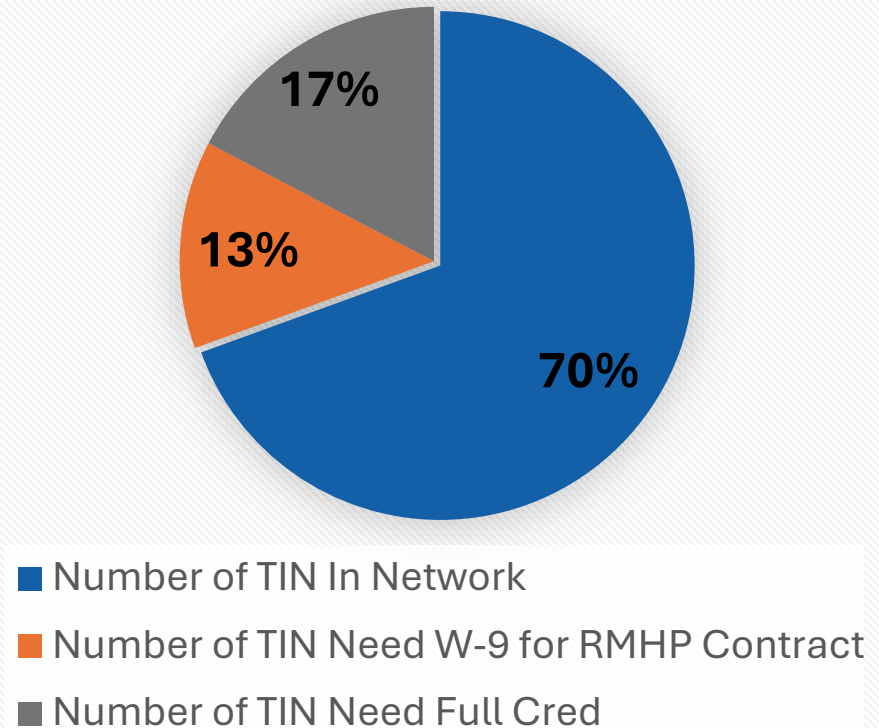
- In-Person Meetings
- Larimer Office Hours
- Monthly webinar “meet and greets” with regional providers
- Monthly PCMP Office Hours with regional providers
- Monthly Behavioral Health (BH) Office Hours with Regional Providers
- One-on-one meetings with providers



Behavioral Health Network Development

- On track for value-based network
- 87% of the NHP network is credentialed with RMHP or is in the final stages.
- Targeted outreach is being conducted on the non-contracted providers.
- 47 providers are identified for priority outreach based on claims volume

NHP Recruitment TIN with Claims History



Regional Accomplishments

- **PCMP Contracting: 124 Practice assessments complete, contracting occurring**
- **MOUs with Collaborative Management Programs, 15 total**
- **Care Coordination assessment and contracting**

What are we missing? Let us know...

👤 Brian Robertson, PhD

✉ brian@nhpllc.org

General E-mail:

nhpphase3@nhpllc.org

