

HCPF/County Directors & Leadership Monthly Support Call

June 20, 2023



COLORADO

Department of Health Care
Policy & Financing

Agenda

- Agenda Requests: County Topics - 5 minutes
- BHA Integration into CBMS - 30 minutes
- MAP Workgroup - 10 minutes
- FY23-24 County Grants - 5 minutes
- County Trending Topics - 10 minutes

Agenda Requests: County Topics

Presented By: Lexie Kuznick

Behavioral Health Administration Community Funded Programs

Behavioral Health Claims & Eligibility (BHC&E) Project

June 20, 2023



BHC&E Project Objectives

Leverage Colorado's current Medicaid Enterprise Systems so that there is a single point of entry to help individuals navigate the full continuum of behavioral health services.

- ▣ Eligibility (CBMS)
- ▣ Member Enrollment (PEAKPro/PEAK)
- ▣ BHA Funded Services - BHA Benefit Plan (MMIS)
- ▣ Enroll BHA Providers (MMIS)
- ▣ Data Storage Warehouse (BIDM)
- ▣ BHA Program Reporting (BIDM)

CBMS/PEAK/PEAKPro Implementation



Go-Live

July 1, 2023

- BHA Provider Early Adopters
- Provision PEAKPro Licenses
- PEAKPro Training Availability
- CBMS Training Availability

Phase 1 – Implementation

July 1, 2023 – December 31, 2023

- CBMS Stabilization
- End Users Test BHA Eligibility
- Program Enhancements/System Adjustments

Phase 2

January 2024 -

- BHA Invite Additional Providers
- 6 months data and analysis
- Program Enhancements /Adjustments
- Redeterminations

July 2023

December
2023

January
2024



COLORADO

Department of Health Care
Policy & Financing

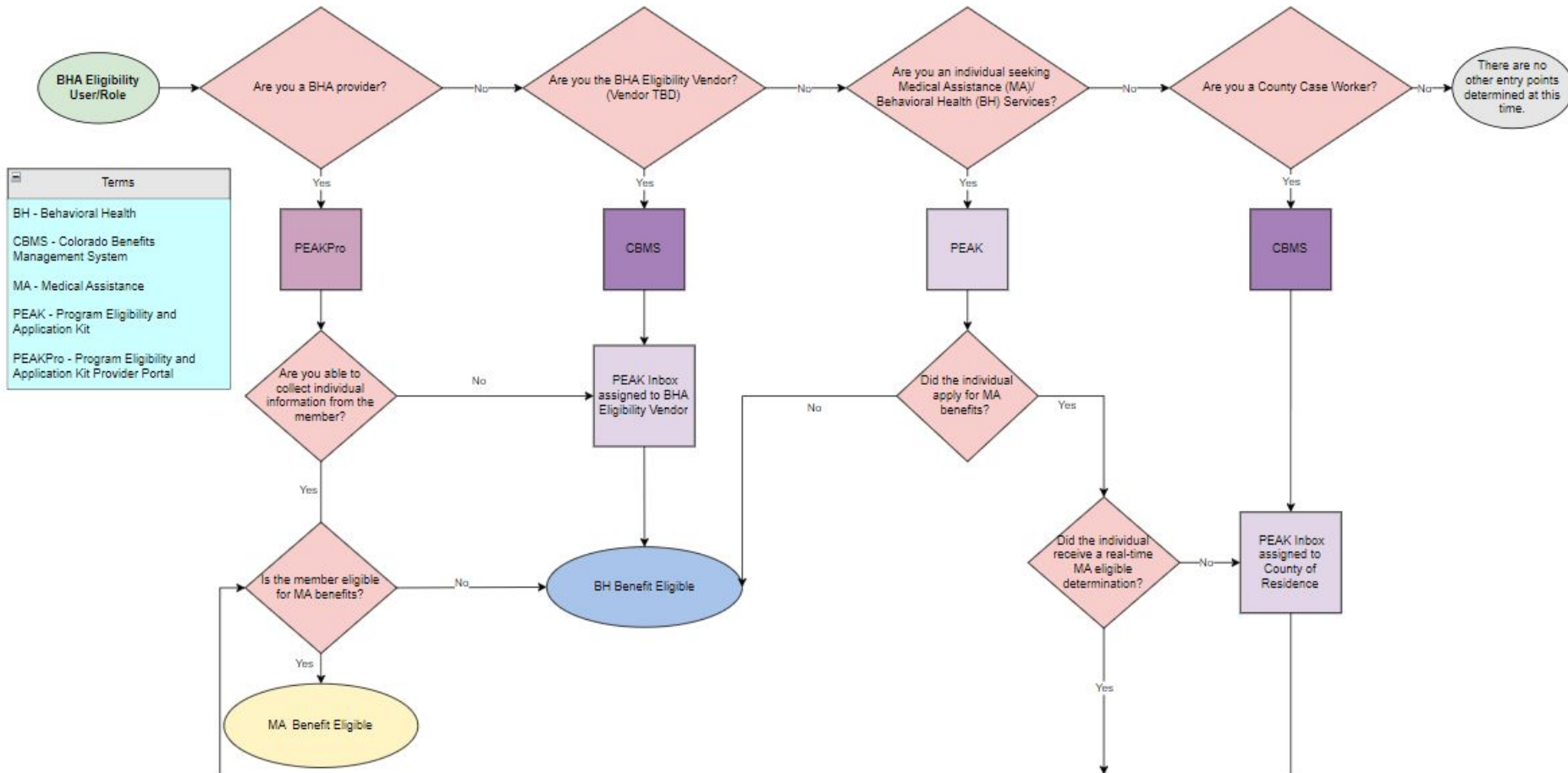
CBMS/PEAK/PEAKPro Implementation

Key Highlights

- Implementing electronic eligibility process through PEAK and PEAKPro
 - Currently - BHA providers using paper eligibility/filing process
- No guarantee of benefits
 - Members need to outreach a BHA provider for benefits and services
- Change Management Implementation
 - Minimal impact to counties
 - Phased Provider Onboarding
 - Big change: PEAKPro onboarding, training, annual redeterminations
- Denver Health supporting BHA Eligibility



BHA Community Funded Program Eligibility Workflow



Terms
BH - Behavioral Health
CBMS - Colorado Benefits Management System
MA - Medical Assistance
PEAK - Program Eligibility and Application Kit
PEAKPro - Program Eligibility and Application Kit Provider Portal

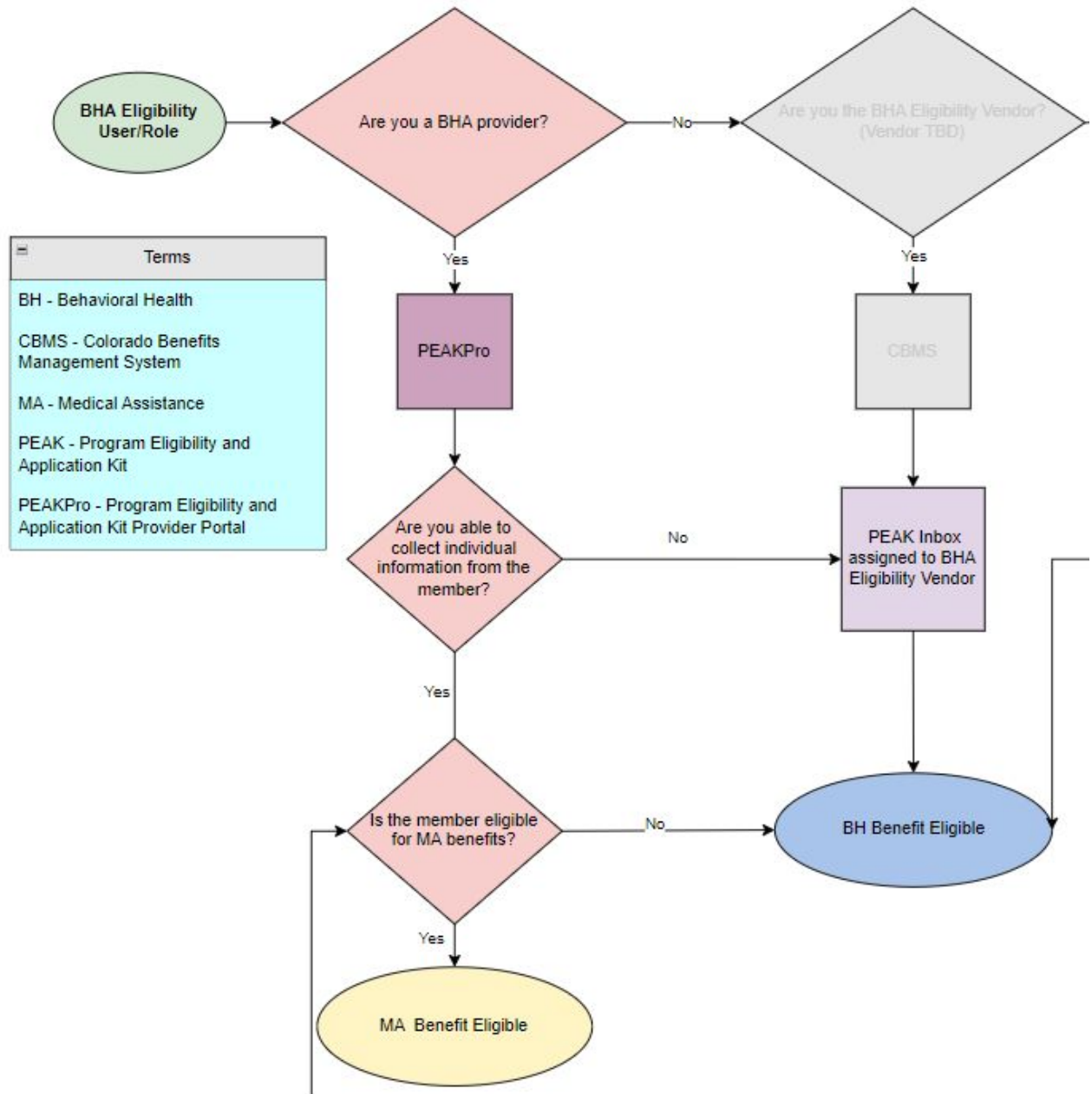


BHA Community Funded Program Eligibility Workflow

	Case County Worker	BHA Provider	BHA Eligibility Vendor
Submit MA application		X	
Submit BHA application		X	
Process MA application	X		
Process Mixed Household Cases	X		
Process BHA only case			X
Annual BHA Redeterminations			X
Redetermination cases (Combo case)	X		

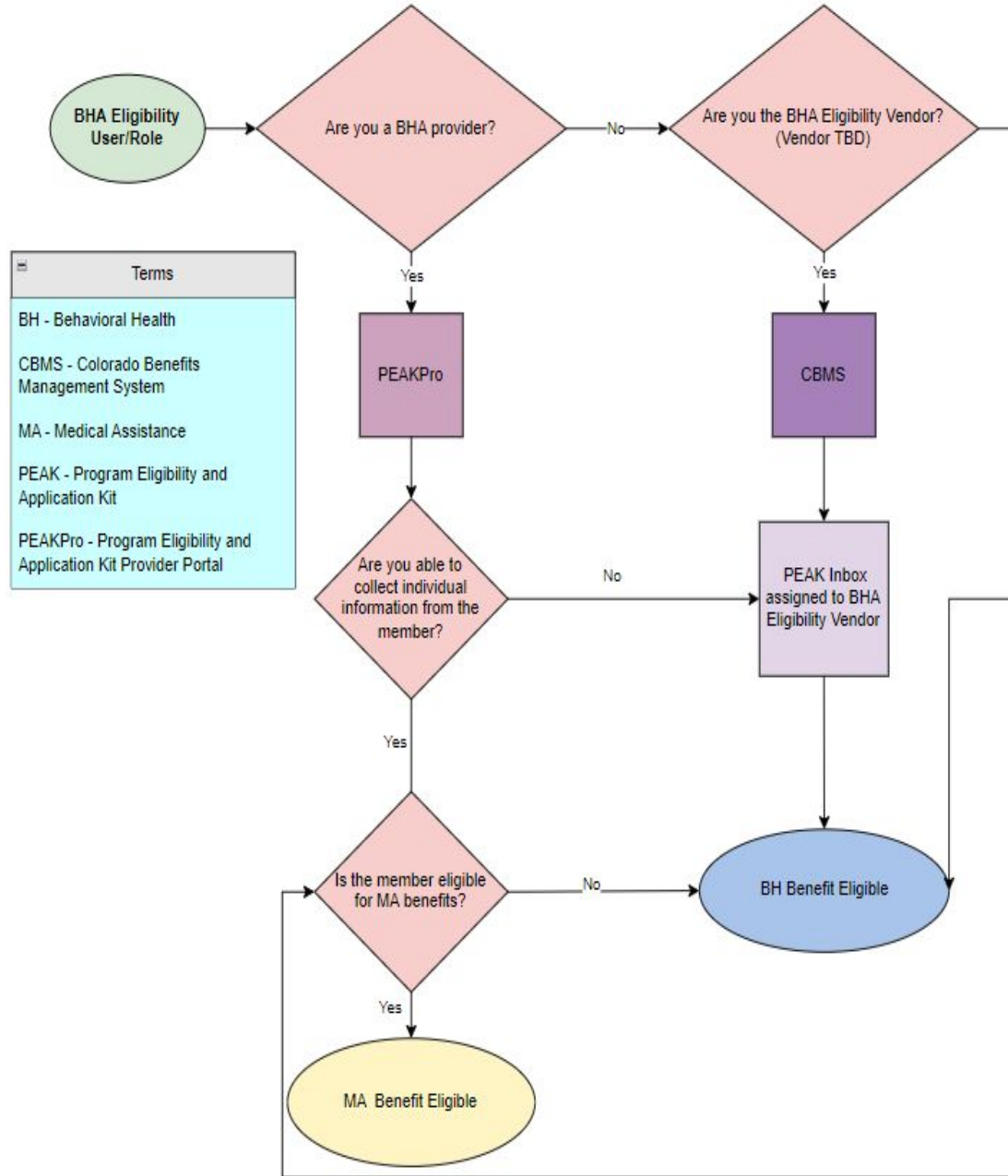


Are you a BHA Provider?



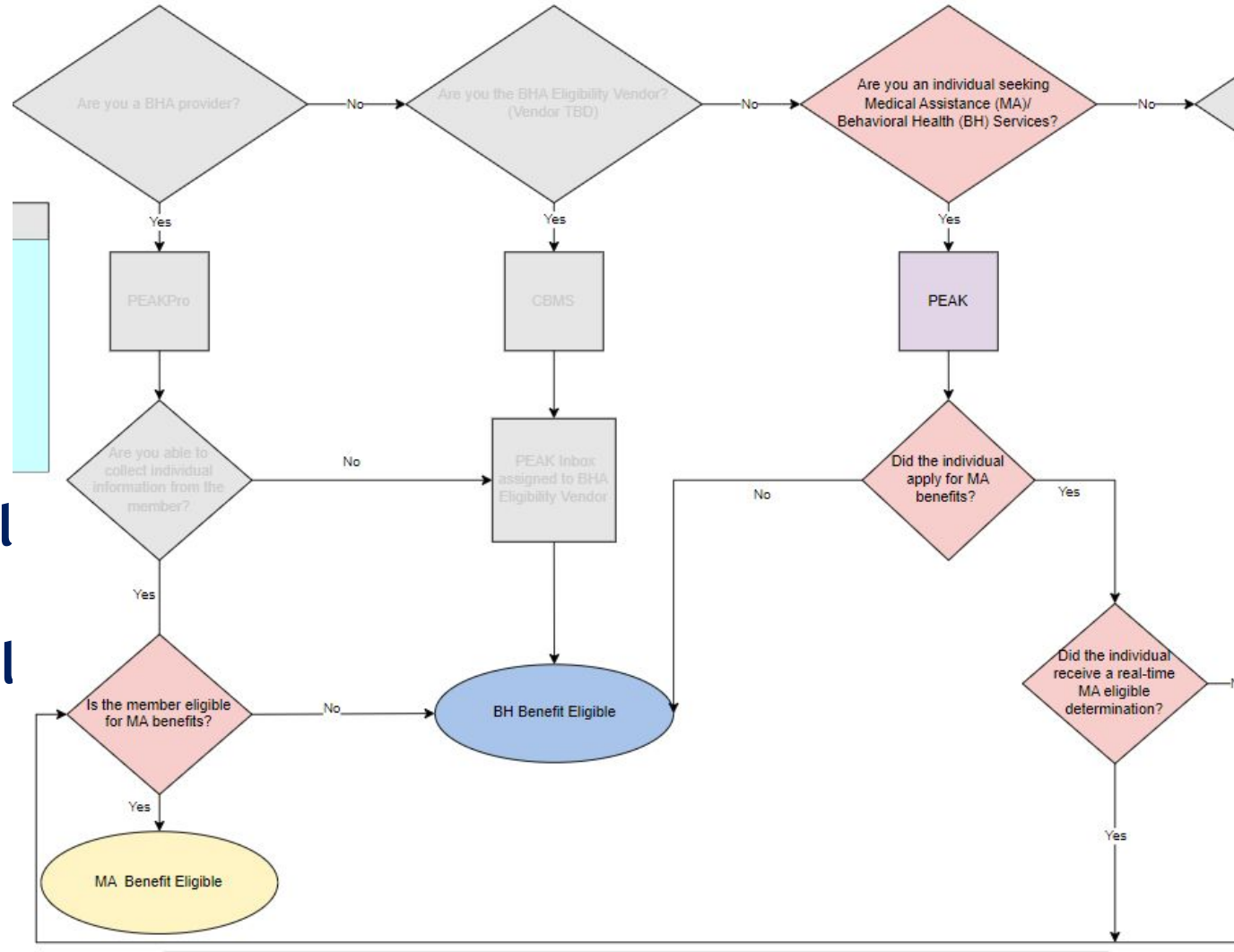
Terms
BH - Behavioral Health
CBMS - Colorado Benefits Management System
MA - Medical Assistance
PEAK - Program Eligibility and Application Kit
PEAKPro - Program Eligibility and Application Kit Provider Portal

Are you the BHA Eligibility Vendor?

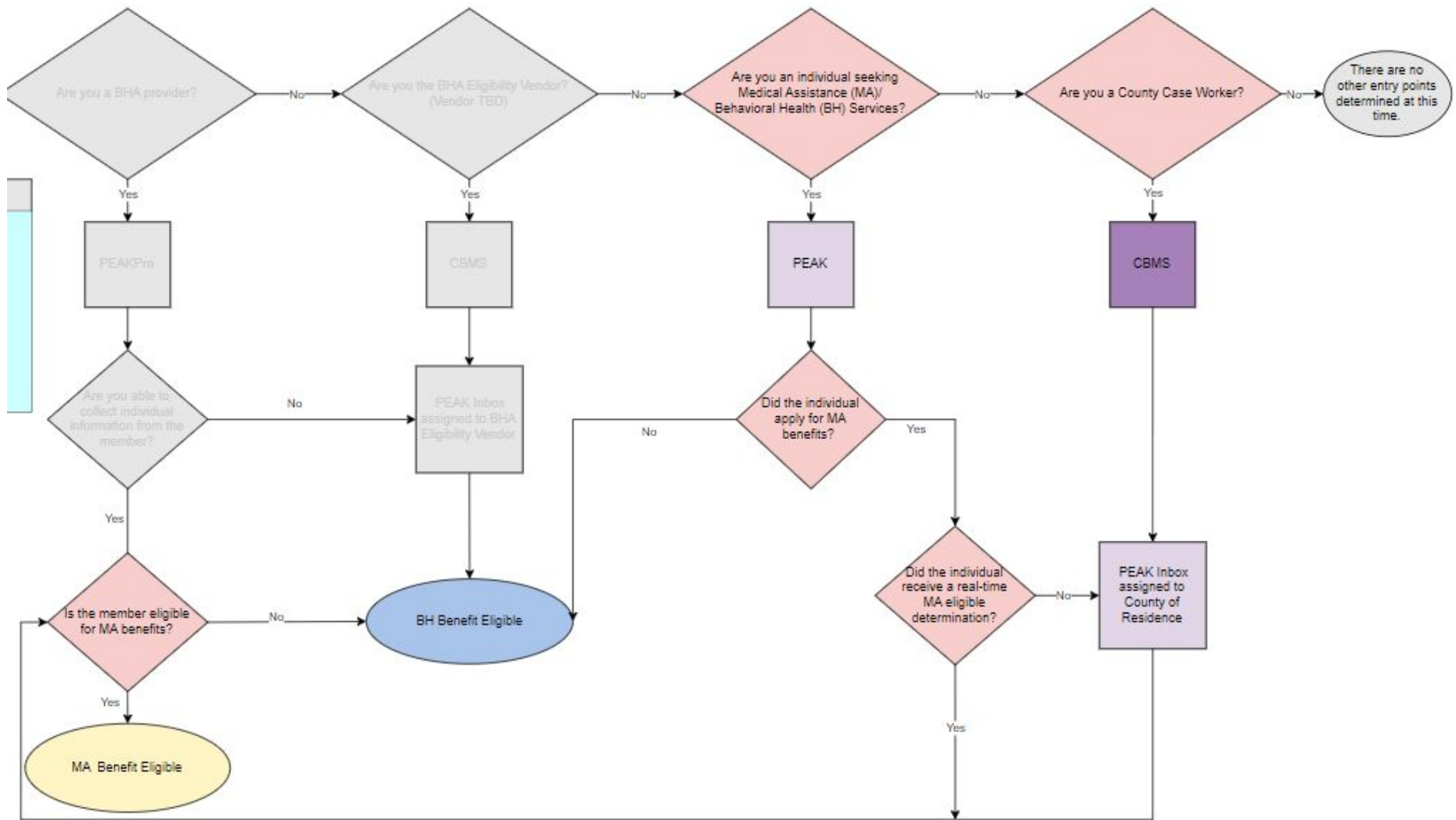


Terms
BH - Behavioral Health
CBMS - Colorado Benefits Management System
MA - Medical Assistance
PEAK - Program Eligibility and Application Kit
PEAKPro - Program Eligibility and Application Kit Provider Portal

Are you an individual seeking Medical Assistance (MA)/Behavioral Health (BH) Services?



Are you a county case worker?





Questions?

MAP Dashboard Workgroup

Presented By: Terri Alexander

MAP Dashboard Workgroup Workgroup Participants

John M	Adams County	Nathan C	Kemberton Healthcare Services
Jennifer V	C4	Adrien L	La Plata County
Eric K	CMAP/Denver Health	Rebecca S	Larimer County
Deb F	Colorado Access	Taylor L	Larimer County
Michael L	Denver County	Terra M	Mesa County
Lupe B	Denver Health	Joshua H	Otero County
Erin J	Douglas County	Carmen M	Rio Blanco County
Brian P	El Paso County	Marcia A	Rio Blanco County
Wanda E	Fremont County	Sarah P	Rio Blanco County
Cody S	Jefferson County	Jesi A	Weld County
Jennifer M	Jefferson County		

MAP Dashboard Workgroup

Next Steps

The workgroup will be co-hosted by the Eligibility Division and County Relations

Welcome email to be sent to participants to include a Doodle poll to determine best day and time for biweekly meeting beginning in July

MAP Dashboard Workgroup

Next Steps

Who: Identified county and eligibility workgroup participants; HCPF Eligibility and County Relations staff

What: To ensure the accuracy of the MAP Dashboard data and how to train county and site staff on MAP data

Why: To review MAP data accuracy and collaborate on MAP processes due to pause in MAP Dashboards

When: proposing biweekly, 90 minute meeting (as a start, to adapt as needed as workgroup progresses on project)

Where: virtual Zoom meetings



Questions?

FY23-24 County Grants

Presented By: Kimberly Preeson

FY23-24 County Grants

- **HCPF IM 23-017 Competitive County Grant Application and associated documents:**
 - County Grants Page: <https://hcpf.colorado.gov/county-grant>
 - HCPF 2023 Memo Series Communications Page: <https://hcpf.colorado.gov/2023-memo-series-communication>
- **Timeline:**
 - Deadline for grant submissions is June 23, 2023.
- **Application Process:**
 - Interviews dates are July 5, 6, 7, 2023
 - Applications are scored by internal staff
 - Grant submissions must align with Department Pillars
- **Next Steps:**
 - Notices of Determination (Approval or Denial) will be sent to counties



Questions?



County Trending Topics

Contact Information

HCPF/County Directors & Leadership
Monthly Support Call - Agenda Items
& Meeting Set-Up:

Sarah Rogers

Sarah.Rogers@state.co.us

For questions for County
Relations, please submit a County
Relations webform ticket:

[https://hcpfdev.secure.force.com/
HCPFCountyRelations](https://hcpfdev.secure.force.com/HCPFCountyRelations) , or email
HCPF_CountyRelations@state.co.us

Thank you!