

# Welcome

## We are Recording



Avoid sharing protected health information

## Use Chat



Please ask questions

## Slides



Will be Shared to webpage and via newsletter

## Listening by Phone



Press \*6 to unmute your line or \*9 to raise hand

## Closed Captioning



Click the Live Transcript icon at the bottom of your screen

# HCPF/BHA/CDPHE Crisis Services Bi-Monthly Technical Assistance Collaborative Meeting

August 22, 2024  
11-12:30pm

# Agenda

- Welcome and Introductions
- CDPHE Review: BHST Data Requirements
- BHA Updates
  - 988 Vendor Transition
  - OwnPath Learning Hub
- HCPF Enrollment Updates
- Funding and Reimbursement Updates

# Introductions



**Meghan Morrissey**  
Safety Net and  
Acute Care Unit  
Supervisor, HCPF



**Jennifer Holcomb**  
Behavioral Health  
Benefits Section  
Manager & SUD  
Senior Staff  
Authority, HCPF



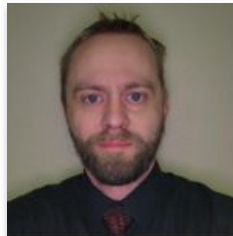
**Alexandra Haas**  
Policy Supervisor  
of Health Facilities  
& EMS Division,  
CDPHE



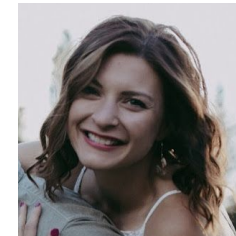
**Marc Condojani**  
Statewide Program  
Division Director,  
BHA



**Carey Boelter**  
Associate Director  
Crisis Services,  
BHA



**Steven Wells**  
Crisis Program  
Manager, BHA



**Kelly Bowman**  
988 Enterprise &  
Crisis Line Program  
Manager, BHA

# CDPHE & BHST

# BHST Provider

If you are interested in providing transportation to people in BH Crisis,

STEP 1: Obtain the appropriate licenses and permits from the counties of operation:

- ❑ [Secure Transport web page](#) to find county contacts
- ❑ [Register a profile with CDPHE](#)

STEP 2: If you would like to receive HCPF funding:

- ❑ Complete [provider enrollment](#)
- ❑ Learn more via the [Behavioral Health Secure Billing Manual](#)

# Submission Process & Data Privacy

To protect client information, data submission must be encrypted prior to sending to the department. To do that, you must complete the following steps:

1. There is a button at the bottom of <https://cdphe.colorado.gov/emergency-care/air-and-ground-ambulance/behavioral-health-secure-transport> entitled “Submit encrypted data”
2. Create a password for your email encryption account
3. Click ‘New Message’ and complete the email as you typically would.
4. Attach the Secure Transportation Spreadsheet from your agency, address email to [cdphe\\_securetransportationdata@state.co.us](mailto:cdphe_securetransportationdata@state.co.us) and click ‘Send’.

# CDPHE Data Report



Download data  
collection tool



Download data  
dictionary



Submit  
encrypted data



2023 Annual  
report



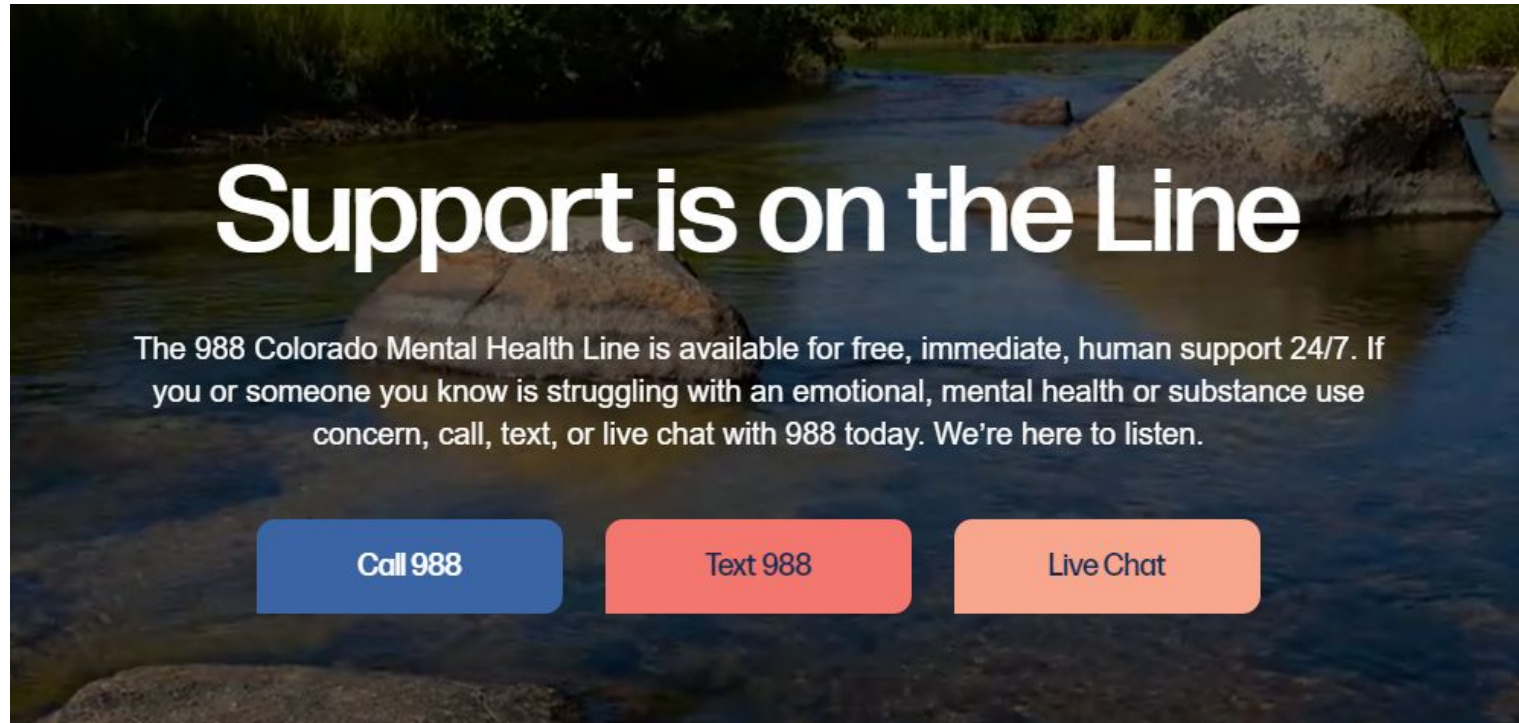


# Secure Transportation Spreadsheet

- CDPHE has a downloadable spreadsheet that can be accessed at <https://cdphe.colorado.gov/emergency-care/air-and-ground-ambulance/behavioral-health-secure-transport>
- This is also the website to access Profiles, the data dictionary, and submit the completed spreadsheet

# 988 Vendor Transition

# 988 Colorado Mental Health Line



**Support is on the Line**

The 988 Colorado Mental Health Line is available for free, immediate, human support 24/7. If you or someone you know is struggling with an emotional, mental health or substance use concern, call, text, or live chat with 988 today. We're here to listen.

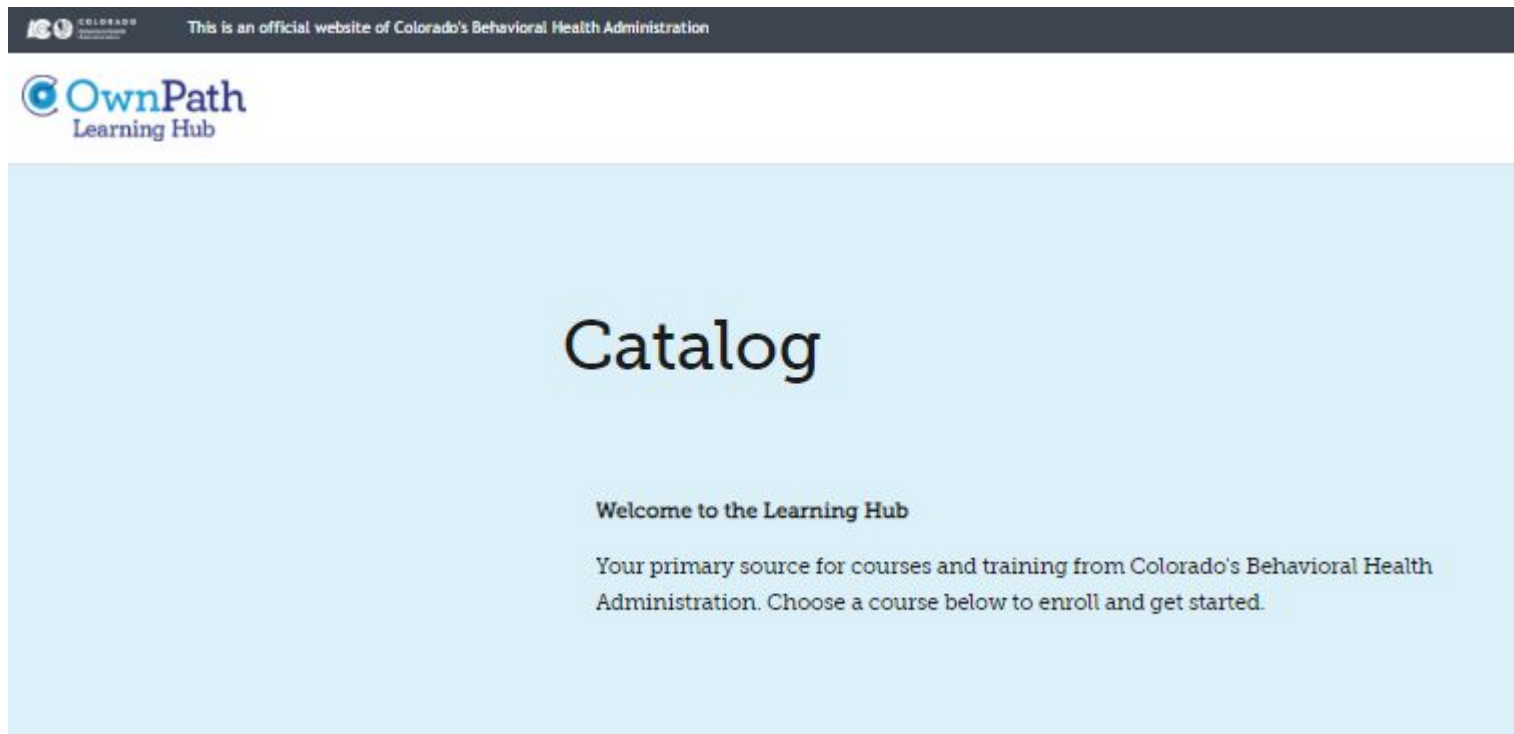
Call 988    Text 988    Live Chat

[988colorado.com](https://988colorado.com)

# BHA OwnPath Learning Hub

# Crisis Professional Curriculum

To get started go to the [OwnPath Learning Hub](#) then select The CPC. From there, you can click ENROLL and then register an account. Once registered, you will be able to access the initial modules of the CPC.



The screenshot shows the top of the OwnPath Learning Hub website. At the top, there is a dark banner with the Colorado logo and the text "This is an official website of Colorado's Behavioral Health Administration". Below this is the "OwnPath Learning Hub" logo. The main content area has a light blue background with the word "Catalog" in large, bold, black font. Below "Catalog" is the text "Welcome to the Learning Hub" and "Your primary source for courses and training from Colorado's Behavioral Health Administration. Choose a course below to enroll and get started."



## The Crisis Professional Curriculum

The Crisis Professional Curriculum contains all of the courses required to become a Crisis Professional and utilize the Colorado Crisis Assessment in the state of Colorado.

[View Details](#)

# Current CPC Modules

- 1 Curriculum Introduction
- 2 Evidence-based and Promising Practices in Crisis Intervention
- 3 Initial Telephonic Screening and Standardized Dispatch Protocol
- 4 Trauma-Informed Care
- 5 Non-violent Crisis Intervention
- 6 Cultural Awareness and Responsiveness
- 7 Crisis Plan Development and Use of Psychiatric Advance Directives
- 8 Suicide Screening, Risk Assessment and Safety Planning
- 9 Gender-Responsive Crisis Services
- 10 **Harm Reduction Strategies (UPDATED TRAINING COMING)**
- 11 Supporting Individuals with Dementia in Crisis
- 12 Managing Privacy and Confidentiality during a Crisis
- 13 Introduction to Supporting Children, Youth, and Families in Crisis
- 14 Addressing Substance Use Issues in Crisis
- 15 Crisis Response for Individuals with Mental Health Conditions and Serious Mental Illness
- 16 Supporting Deaf, Hard of Hearing and Deafblind individuals in Crisis
- 17 Supporting Children, Youth, and Their Families in Crisis: IDD
- 18 Supporting Children, Youth, and Their Families in Crisis: De-escalation & Stabilization
- 19 Supporting Children, Youth, and Their Families in Crisis: Consent Laws and Boundaries
- 20 Supporting Children, Youth, and Their Families in Crisis: Screening & Assessment
21. Responding to LGBTQIA2S+ Individuals in Crisis
22. Crisis Response for Individuals on Psychotropic Medications
23. Supporting Children, Youth, and Their Families in Crisis: Safety Planning & Bridging
24. Supporting Individuals with Co-Occurring Disorders in Crisis
25. National Standards for Culturally and Linguistically Appropriate Services
26. Cultural Responsiveness for American Indians and Alaska Natives in Crisis
27. Crisis Response for Individuals with Intellectual/Developmental Disabilities
28. Crisis Response for Neurodivergent Individuals and People on the Autism Spectrum
29. Supporting Individuals with Traumatic Brain Injuries in Crisis
30. Integrating Peer Professionals in Colorado's Crisis System Workforce
31. Ethical Considerations in Crisis Intervention
32. Colorado Crisis Assessment

# BHA LMS

- Crisis Professional Curriculum (CPC)
  - Training is free
  - All 32 Courses/45 hrs have been released as of 07/15/24
  - 23 courses currently approved for CEUs by the APA, 8 additional courses under review
- Crisis Assessment
  - The Colorado Crisis Assessment was released on 07/15/24 with the final CPC courses. The Colorado Crisis Assessment fillable form and instructions can be found [here](#)
  - Providers are encouraged to work with their ASO to complete a BHA waiver if believe they are not going to be compliant with Rule (2 CCR 502-1) either for the crisis professional staffing requirements related to MCR, WIC and CSU and/or implementation of the Colorado Crisis Assessment

# HCPF Enrollment Updates



# Current HCPF Enrollments

## MCR

- Aspen Hope Center
- Axis Health System
- Centennial Mental Health Center
- Denver Health and Hospital Authority
- Diversus Health
- Gunnison Valley Health
- Health Solutions
- Jefferson Center for Mental Health
- Mind Springs Health
- North Range Behavioral Health
- San Luis Valley Behavioral Health
- Solvista
- SummitStone Health Partners
- Valley-Wide Health Systems
- Your Hope Center

## BHST

- Centennial Mental Health Center (833-591-0454)
- Citadel Security (970-216-4384)
- Colorado Secure Transportation, LLC (877-743-3988)
- Delta County Ambulance District (970-250-3531)
- Diversus Health Services (719-635-7000)
- Eagle County Paramedic Service (970-479-2201)
- First Response K-9 (719-849-3994)
- Guardian Transport & Security LLC (970-640-5957)
- Legacy EMS, Inc (844-886-3339)
- North Range Behavioral Health
- Poudre Valley Health Care, Inc. (970-237-7919)
- SkyRide LLC (720-957-2024)
- UTE Pass Regional Ambulance District (719-687-9262)

# MCR is part of the Safety Net

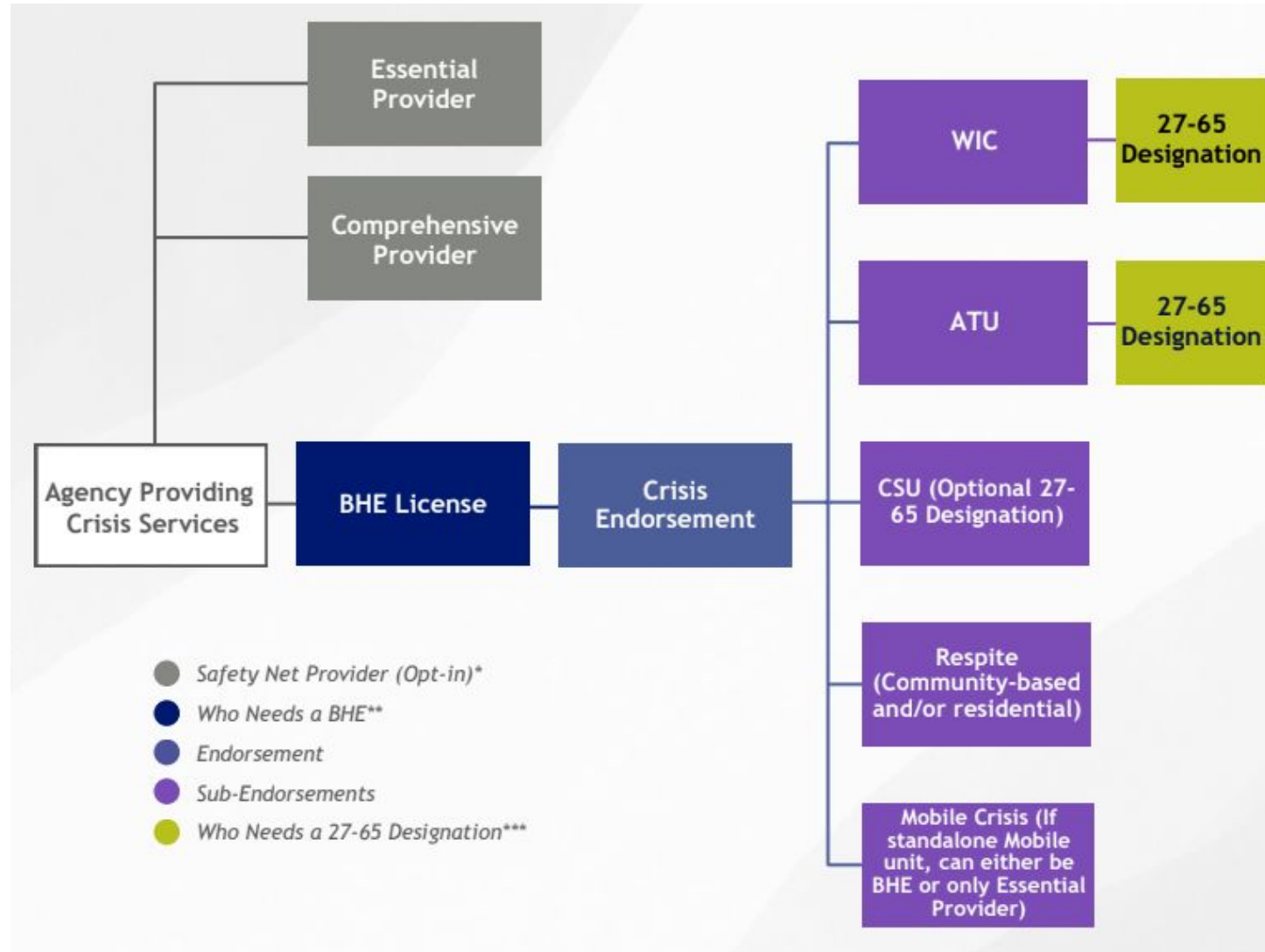
The MCR services codes:

- 90839 with ET modifier
- H2011 with ET modifier

may be provided by:

- Crisis Services PT 95, Speciality 772 MCR
  - with essential approval
  - without essential approval
- Comprehensive Safety Net PT 78, Specialty 887

# Agency Providing Crisis Services - BHA Licensing



# Behavioral Health Safety Net Providers

## Essential Behavioral Health Safety Net Provider

Provides care coordination and one or more of the following:

- Emergency/Crisis
- Outpatient
- Intensive Outpatient
- Residential
- Withdrawal Management
- Inpatient
- Integrated Care
- Hospital Alternatives

## Comprehensive Community Behavioral Health Provider

Provides care coordination and all of the following:

- Emergency/Crisis
- Outpatient
- Intensive Outpatient
- Care Management
- Outreach, Engagement, Education
- Recovery Supports
- Outpatient Competency Restoration

# Schedule a Support Session

<https://bha.colorado.gov/resources/laws-and-rules>

## Laws and Rules

**Update (Dec. 5, 2023) – The State of Colorado is entering a period of regulatory transition and behavioral health reform.**

The Behavioral Health Administration (BHA) is responsible for regulating the provision of behavioral health services in Colorado by developing and monitoring reasonable and proper rules and regulations. In alignment with [House Bill 19-1237](#), [House Bill 22-1278](#) and [House Bill 23-1326](#), BHA is updating its licensing structure and process.

The [State Board of Human Services](#) passed the updated [BHA Provider Rules](#) (adopted Nov. 3, 2023), setting the foundation for new rules and regulations to take effect for behavioral health providers beginning on Jan. 1, 2024.

On and after Jan. 1, 2024, BHA will have the authority to issue Behavioral Health Entity (BHE) licenses to [agencies that qualify as a BHE](#) and will be responsible for the approval of Essential and Comprehensive Providers that elect to participate in the [safety net system](#) to ensure all those in Colorado who need services have access to them.

The authority to issue BHEs will transition to BHA from the Colorado Department of Public Health and Environment (CDPHE) on Jan. 1, 2024, and will replace the existing structure of Substance Use Disorder (SUD) treatment licenses, Community Mental Health Center (CMHC) designations, and Community Mental Health clinic (CMHC) designations in the state of Colorado.

The BHE license model provides a “cafeteria-style” license in which an agency holds a single BHE license with different endorsements, allowing the agency to offer various services at multiple locations. This allows flexibility and ultimately will support easier addition of services and locations for the agency to meet the needs of their populations served.

This transition is expected to occur into the early months of 2025.

Agencies are encouraged to review the [Agency Transition Guide](#) to help determine the starting point for your agency during this transition, and are encouraged to bookmark and visit this page frequently, as updated information and resources will be released as they become available.


### Transition support for current providers

Providers that hold a current BHA-issued license and/or designation are invited to book a technical support session focusing on your transition needs.

 [Book a support session](#)

### Q&S Newsletter

Sign up to receive updates, engagement opportunities and resources from the BHA's Quality and Standards division.

 [Sign up today](#)

# Essential Providers

- 1) A Provider gets BHA Approval as an Essential Provider
- 2) A Provider enrolls (or updates enrollment) with HCPF

*There is not a distinct Provider Type or Specialty Type for this - it will be a “box” you select in the enrollment portal under the appropriate existing provider types*

  - a) New Providers - Enroll as the appropriate provider type and select “Essential” in the enrollment portal at the time of enrollment. Must upload BHA Approval Letter
  - b) Current Providers - Submit a maintenance request and select “Essential” in the enrollment portal. Must upload BHA Approval Letter
- 3) A Provider must be contracted with an MCE as a safety net provider to receive the enhanced payment.
  - a) MCEs are required to re-contract with existing providers who have secured Essential status.
  - b) MCEs may choose not to contract with new providers based on network needs.
- 4) A Provider will receive the Essential enhanced payment rate based on the effective date of the MCE contract.
- 5) HCPF sends a weekly provider file and a quarterly file to the MCEs. The weekly file includes any changes that were made from the previous weekly file.



# HCPF SNP Forum

Learn more about HCPF reimbursement for safety net providers

- [HCPF Safety Net Provider Webpage](#)
- Collaborative Safety Net Provider Forum
  - Aug 30th 10:00am-11:00am [Register in advance](#)

**Feeling Like You Have One Foot In Two Worlds? Let's Get Grounded on the Transition to the Behavioral Health Entity License and Safety Net Approvals (51 minutes):** An overview of changes to provider licensure, approval, and endorsement, how these changes align with policy reform, including the expansion of the behavioral health safety net, and how to transition to the new requirements.

Training [Full Description](#) | [Video](#) | [Slides](#)

# Funding and Reimbursement Updates



# Across the Board Rate Increases

## Fiscal Year 2024-2025 Provider Rate Adjustments

Health First Colorado (Colorado's Medicaid program) Across-the-Board (ATB) provider rate increases were approved during the 2023 legislative session and are effective for dates of service beginning July 1, 2024. All rate adjustments are subject to CMS approval prior to implementation.

The fee schedules located on the [Provider Rates and Fee Schedule web page](#) were updated to reflect the approved 2.0% ATB rate increases. Rates were updated in the Colorado interChange for dates of service beginning July 1, 2024.

Targeted rate rebalances and adjustment are also be effective as of July 1, 2024. These rate adjustments are based on recommendations made in the [2023 Medicaid Provider Rate Review Analysis and Recommendation Report](#). Fee-For-Service Behavioral Health services, among other services, are approved for a targeted rate adjustment. To learn more, check out the [Provider Bulletin July 2024](#).

# BHST Billing Updates

- A0425 mileage rate increased on 7/1/24
- Multiple Trips in the Same Day
  - When billing for one member taking multiple trips in the same day with the same rendering provider, modifier 76 must be used.
  - When billing for one member taking multiple trips in the same day with different rendering providers, modifier 77 must be used.

# BHST Billing Updates (cont.)

- 250 mileage limit on A0425
  - approved by CMS; HCPF systems updates in process
  - BHST providers must submit the BHST 250+ Mileage Verification form with their claim. The form must be filled out by the Behavioral Health provider who requested the BHST services. The Behavioral Health provider may be the same professional types who establish member eligibility.

# Funding Opportunities

[BHA Funding Opportunities](#)

[EMS Funding Opportunities](#)

[National Aging and Disability Transportation Center](#)

[Transportation Safety Foundation Grant Application](#)

[SAFECOM](#) - New

[US Dept of Transportation SMART Grant](#) - New



**COLORADO**

Department of Health Care  
Policy & Financing

# New Resource Listserv

Sign up [here](#) for:

## Health First Colorado Behavioral Health Updates

Health First Colorado Behavioral Health Updates provides content relevant to the full spectrum of behavioral health services in Colorado.

All editions will be available on the HCPF [Behavioral Health Reform webpage](#).

\*Crisis Services Newsletter last issue June 2024.

# Thank You and Questions

## BHA Mission:

To co-create a people-first behavioral health system that meets the needs of all people in Colorado

### Carey Boelter

Associate Director Crisis Services, BHA  
[carey.boelter@state.co.us](mailto:carey.boelter@state.co.us)

### Kelly Bowman

988 Enterprise & Crisis Line Program Manager  
[kelly.bowman@state.co.us](mailto:kelly.bowman@state.co.us)

### Marc Condojani

Statewide Program Division Director, BHA  
[marc.condojani@state.co.us](mailto:marc.condojani@state.co.us)

### Steven Wells

Crisis Program Manager, BHA  
[steven.wells@state.co.us](mailto:steven.wells@state.co.us)

## HCPF Mission:

To improve health care equity, access and outcomes for the people we serve while saving Coloradans money on health care and driving value for Colorado

### Jennifer Holcomb

Behavioral Health Benefits Section Manager  
& SUD Senior Staff Authority, HCPF  
[jennifer.holcomb@state.co.us](mailto:jennifer.holcomb@state.co.us)

### Meghan Morrissey

Safety Net and Acute Care Unit Supervisor, HCPF  
[meghan.morrissey@state.co.us](mailto:meghan.morrissey@state.co.us)

## CDPHE Mission:

Advancing Colorado's health and protecting the places where we live, learn, work, and play.

### Alexandra Haas

Policy Supervisor of Health Facilities & EMS Division,  
CDPHE  
[alexandra.haas@state.co.us](mailto:alexandra.haas@state.co.us)



**COLORADO**  
Department of Health Care  
Policy & Financing



**COLORADO**  
Behavioral Health  
Administration



**COLORADO**  
Department of Public  
Health & Environment