

# Welcome

## We are Recording



Avoid sharing protected health information

## Use Chat



Please ask questions

## Slides



Will be Shared to webpage and via newsletter

## Listening by Phone



Press \*6 to unmute your line or \*9 to raise hand

## Closed Captioning



Click the Live Transcript icon at the bottom of your screen

# HCPF/BHA/CDPHE Crisis Services Bi-Monthly Technical Assistance Collaborative Meeting

April 25, 2024  
11-12:30pm

# Agenda

- Welcome and Introductions
- CDPHE Review: BHST Data Requirements
- BHA Updates
  - OwnPath Learning Hub
  - BHA Dashboard Update
- Funding Updates
- Licensing
  - BHA Review: Behavioral Health Entity Licensure
  - HCPF

# Introductions



**Meghan Morrissey**  
Crisis Services  
Policy Advisor, HCPF



**Jennifer Holcomb**  
Behavioral Health  
Managed Care  
Section Manager &  
SUD Senior Staff  
Authority, HCPF



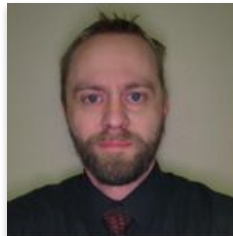
**Alexandra Haas**  
Policy Supervisor  
of Health Facilities  
& EMS Division,  
CDPHE



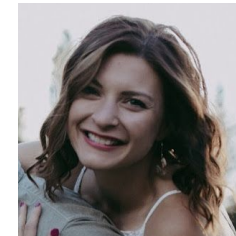
**Marc Condojani**  
Manager of Crisis  
Services Colorado,  
BHA



**Carey Boelter**  
Associate Director  
Crisis Services,  
BHA



**Steven Wells**  
Crisis Program  
Manager, BHA



**Kelly Bowman**  
988 Enterprise &  
Crisis Line Program  
Manager, BHA

# CDPHE & BHST

# BHST Provider

If you are interested in providing transportation to people in BH Crisis,

STEP 1: Obtain the appropriate licenses and permits from the counties of operation:

- ❑ [Secure Transport web page](#) to find county contacts
- ❑ [Register a profile with CDPHE](#)

STEP 2: If you would like to receive HCPF funding:

- ❑ Complete [provider enrollment](#)
- ❑ Learn more via the [Behavioral Health Secure Billing Manual](#)

# CDPHE Data Requirements

## Data Requirements - 6 CCR 1011-4, Part 6

- Secure Transportation services shall submit... the following data by **March 1** for the following previous calendar year:
  - The total number of transports
  - The total number of adults (18+) served
  - The total number of minors (17 and under) served
  - The type of location where individuals were picked up/dropped off

# Data Requirements - 6 CCR 1011-4, Part 6 Cont'd

- Secure Transportation services shall submit... the following data for the following previous calendar year on **March 1**:
- - The total number of individuals who were transported more than one time
  - The total number of transports that the service was declined due to lack of S.T. resources
  - Demographic information (e.g., zip code, totals by location, gender, race & ethnicity)
  - The total number of clients transported who were not on involuntary holds



# Secure Transportation Spreadsheet

- CDPHE has a downloadable spreadsheet that can be accessed at <https://cdphe.colorado.gov/emergency-care/air-and-ground-ambulance/behavioral-health-secure-transport>
- This is also the website to access Profiles, the data dictionary, and submit the completed spreadsheet

# Submission Process & Data Privacy

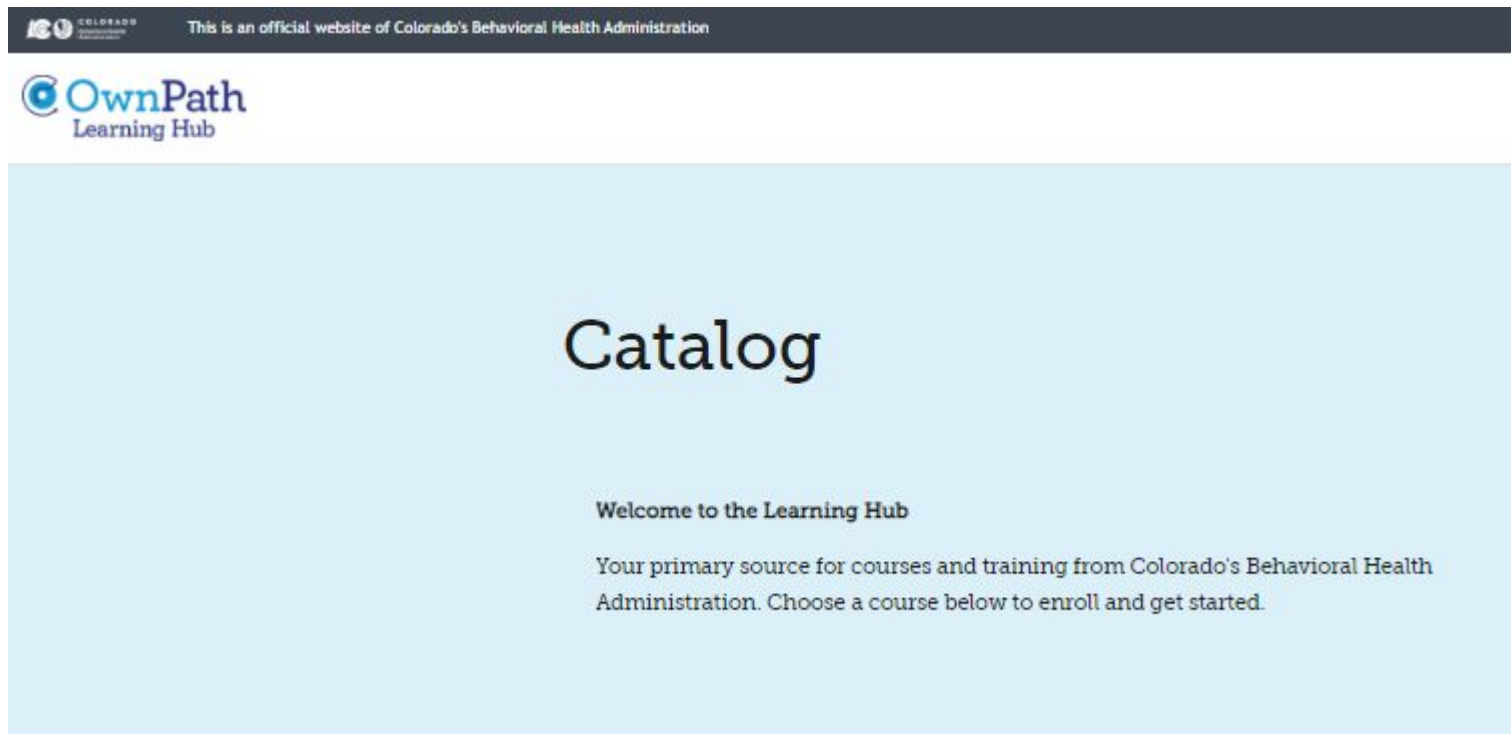
To protect client information, data submission must be encrypted prior to sending to the department. To do that, you must complete the following steps:

1. There is a button at the bottom of <https://cdphe.colorado.gov/emergency-care/air-and-ground-ambulance/behavioral-health-secure-transport> entitled “Submit encrypted data”
2. Create a password for your email encryption account
3. Click ‘New Message’ and complete the email as you typically would.
4. Attach the Secure Transportation Spreadsheet from your agency, address email to [cdphe.securetransportationdata@state.co.us](mailto:cdphe.securetransportationdata@state.co.us) and click ‘Send’.

# BHA OwnPath Learning Hub

# Crisis Professional Curriculum

To get started go to the [OwnPath Learning Hub](#) then select The CPC. From there, you can click ENROLL and then register an account. Once registered, you will be able to access the initial modules of the CPC.



The screenshot shows the top of the OwnPath Learning Hub website. At the top left, there is a logo for 'COLORADO' with the text 'This is an official website of Colorado's Behavioral Health Administration'. Below this is the 'OwnPath Learning Hub' logo. The main content area has a light blue background and features the word 'Catalog' in a large, dark font. Below 'Catalog', there is a heading 'Welcome to the Learning Hub' followed by the text: 'Your primary source for courses and training from Colorado's Behavioral Health Administration. Choose a course below to enroll and get started.'



## The Crisis Professional Curriculum

The Crisis Professional Curriculum contains all of the courses required to become a Crisis Professional and utilize the Colorado Crisis Assessment in the state of Colorado.

[View Details](#)

# Current CPC Modules

- Curriculum Introduction
- Evidence-based and Promising Practices in Crisis Intervention
- Initial Telephonic Screening and Standardized Dispatch Protocol
- Trauma-Informed Care
- Non-violent Crisis Intervention
- Cultural Awareness and Responsiveness
- Crisis Plan Development and Use of Psychiatric Advance Directives
- Suicide Screening, Risk Assessment and Safety Planning
- Gender-Responsive Crisis Services
- Harm Reduction Strategies
- Supporting Individuals with Dementia in Crisis
- Managing Privacy and Confidentiality during a Crisis
- Introduction to Supporting Children, Youth, and Families in Crisis
- Addressing Substance Use Issues in Crisis
- Crisis Response for Individuals with Mental Health Conditions and Serious Mental Illness
- Supporting Deaf, Hard of Hearing and Deafblind individuals in Crisis
- Supporting Children, Youth, and Their Families in Crisis: IDD
- Supporting Children, Youth, and Their Families in Crisis: De-escalation & Stabilization
- Supporting Children, Youth, and Their Families in Crisis: Consent Laws and Boundaries
- Supporting Children, Youth, and Their Families in Crisis: Screening & Assessment
- Responding to LGBTQIA2S+ Individuals in Crisis

# BHA LMS

- Crisis Professional Curriculum (CPC)
  - Training is free
  - Training is mandatory for Mobile Crisis Response staff, Walk-In Center staff, and Crisis Stabilization Unit staff, per rule.
  - BHA has reported a period of delayed enforcement, but it is good practice to be proactive in completing modules to support professional growth and provide BHA feedback on course content.
- Crisis Assessment
  - Completed, thanks to our SMEs and advisory committee for review and feedback.
  - Launch date: TBD following release of the CPC Crisis Assessment training course.

# BHA Dashboard Update

- Dashboard for Crisis Resolution Teams has been updated through March 2024
- Workgroup with ASOs completed the revision of the data dictionary and it is set to start use in FY25 (July 1, 2024)



Colorado Children Youth and Families Crisis Resolution Pilot Program  
ASO Services

Services Performed	Primary Clients Served	Clients Not Accessing Higher Level Care	Month, Year of Date	Select Fiscal Year
3,711	338	91.4%	(All)	All

Unique Families Served by Each Provider

ASO Region	ASO Provider	Unique Families Served
1	Rocky Mountain Health Partners	234
2	Carelon	69
3	Signal Behavioral Health Network	71
4	Health Colorado	196
5	Signal Behavioral Health Network	16
6	Signal Behavioral Health Network	7
7	Carelon	29

Breakdown (percentages relative to each category)

Categories	Reporting Field	Percentage
Age	0-12	38.5%
	13-17	54.6%
	18-21	6.4%
	Unknown Age	0.5%
Gender	Female	46.5%
	Male	44.4%
	Transgender	4.8%
	Unknown Gender	4.3%
Higher Level Care Intervention	Admission to psychiatric hospital	41.4%
	ATU	0.0%
	CSU	27.6%
	Detox	0.0%
	Emergency Room	17.2%
Primary Presenting Problem	Residential	13.8%
	Family Dysregulation	25.9%
	Other directed aggression	13.0%
	Psychosis	1.4%
	Self-harm	6.7%
	Social/Interpersonal stress	5.0%
Referral Source	Substance Use	2.2%
	Suicidal Ideation	45.8%
	CCS	81.2%
	DHS	3.5%
Services Provided	Emergency Services	15.3%
	Case Management	24.2%
	Client therapy	16.7%
	Community Supports	7.9%
	Crisis Intervention	9.2%
	Family Skill Building	7.3%
	Family Therapy	7.2%
Group Therapy	0.7%	

Last Updated: 4/17/2024

Data Source: BHA CYF Crisis Resolution Pilot Reporting

# Funding Updates



# ARPA Funds

- Deadlines for ASO reconciliation to BHA
  - [steven.wells@state.co.us](mailto:steven.wells@state.co.us)
- APRA funds guidelines
  - [HCPF Fact Sheet: Supplanting vs Supplementing](#)

Spending Time Frame	Reconciliation Due to BHA for MCR
Q1(July-Sept)	10/30/23
Q2 (Oct-Dec)	1/30/24
Q3 (Jan-Mar)	4/30/24
Q4 (Apr-Jun)	7/30/24

# BHST Billing Updates

## Known issues:

- A0425 rate
  - mileage rate updated from \$6.10 to \$6.28
  - all claims reprocessed since 7/1/23
- 250 mileage limit on A0425
  - approved by CMS
  - HCPF systems updates in process

# Funding Opportunities

[BHA Funding Opportunities](#)

[EMS Funding Opportunities](#)

[Medicare Rural Hospital Flexibility Program -  
Emergency Medical Services Supplement](#)

[National Aging and Disability Transportation Center](#)

[Transportation Safety Foundation Grant Application](#)



**COLORADO**

Department of Health Care  
Policy & Financing

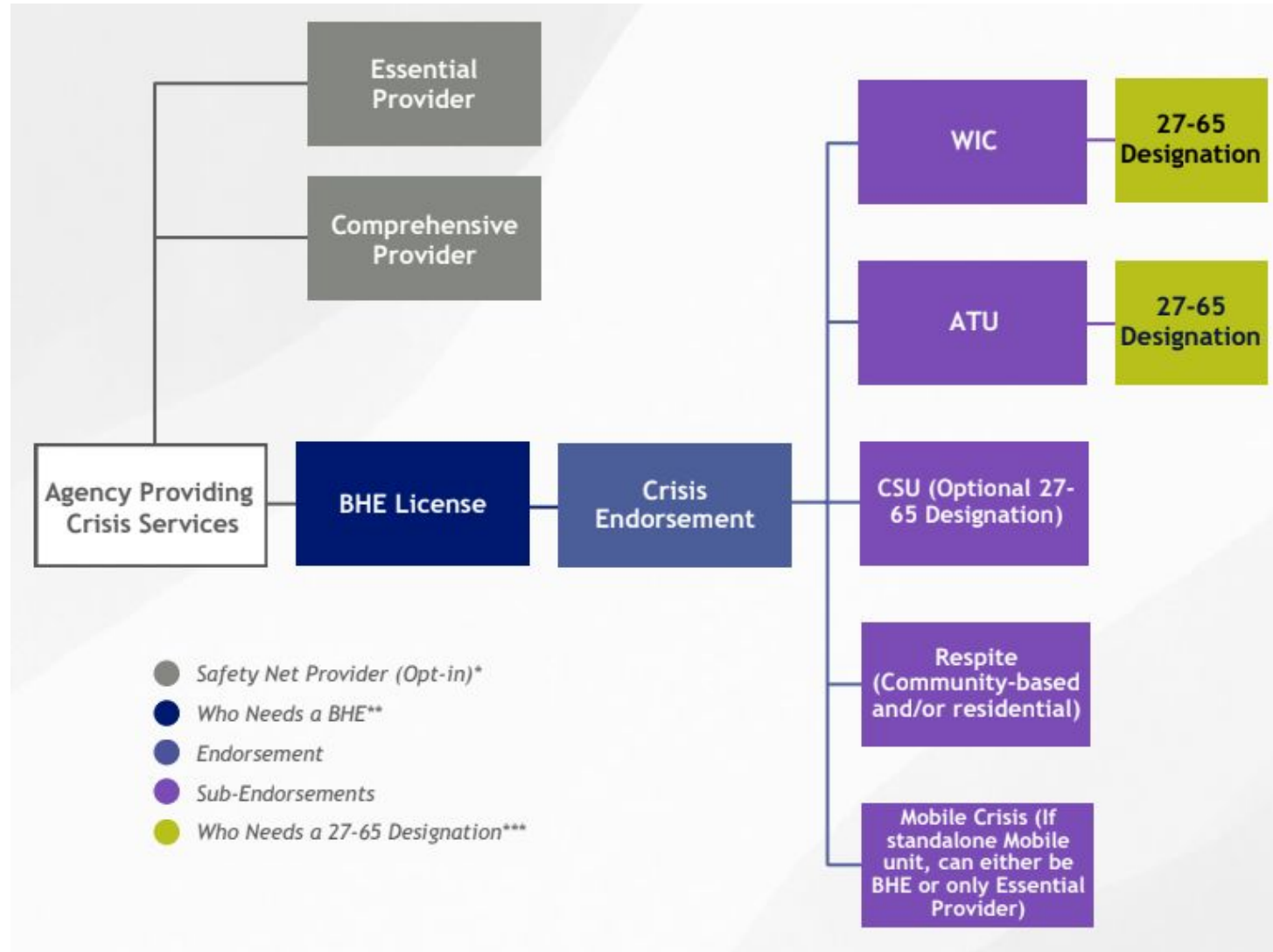
# Licensing



# BHA Licensing

---

# Agency Providing Crisis Services - BHA Licensing



# Behavioral Health Safety Net Providers

## Essential Behavioral Health Safety Net Provider

Provides care coordination and one or more of the following:

- Emergency/Crisis
- Outpatient
- Intensive Outpatient
- Residential
- Withdrawal Management
- Inpatient
- Integrated Care
- Hospital Alternatives

## Comprehensive Community Behavioral Health Provider

Provides care coordination and all of the following:

- Emergency/Crisis
- Outpatient
- Intensive Outpatient
- Care Management
- Outreach, Engagement, Education
- Recovery Supports
- Outpatient Competency Restoration

# Schedule a Support Session

<https://bha.colorado.gov/resources/laws-and-rules>

## Laws and Rules

**Update (Dec. 5, 2023) – The State of Colorado is entering a period of regulatory transition and behavioral health reform.**

The Behavioral Health Administration (BHA) is responsible for regulating the provision of behavioral health services in Colorado by developing and monitoring reasonable and proper rules and regulations. In alignment with [House Bill 19-1237](#), [House Bill 22-1278](#) and [House Bill 23-1326](#), BHA is updating its licensing structure and process.

The [State Board of Human Services](#) passed the updated [BHA Provider Rules](#) (adopted Nov. 3, 2023), setting the foundation for new rules and regulations to take effect for behavioral health providers beginning on Jan. 1, 2024.

On and after Jan. 1, 2024, BHA will have the authority to issue Behavioral Health Entity (BHE) licenses to [agencies that qualify as a BHE](#) and will be responsible for the approval of Essential and Comprehensive Providers that elect to participate in the [safety net system](#) to ensure all those in Colorado who need services have access to them.

The authority to issue BHEs will transition to BHA from the Colorado Department of Public Health and Environment (CDPHE) on Jan. 1, 2024, and will replace the existing structure of Substance Use Disorder (SUD) treatment licenses, Community Mental Health Center (CMHC) designations, and Community Mental Health clinic (CMHc) designations in the state of Colorado.

The BHE license model provides a “cafeteria-style” license in which an agency holds a single BHE license with different endorsements, allowing the agency to offer various services at multiple locations. This allows flexibility and ultimately will support easier addition of services and locations for the agency to meet the needs of their populations served.

This transition is expected to occur into the early months of 2025.

Agencies are encouraged to review the [Agency Transition Guide](#) to help determine the starting point for your agency during this transition, and are encouraged to bookmark and visit this page frequently, as updated information and resources will be released as they become available.

### Transition support for current providers

Providers that hold a current BHA-issued license and/or designation are invited to book a technical support session focusing on your transition needs.

 [Book a support session](#)

### Q&S Newsletter

Sign up to receive updates, engagement opportunities and resources from the BHA's Quality and Standards division.

 [Sign up today](#)



# Current HCPF Enrollments

## MCR

- Axis Health System
- Centennial Mental Health Center
- Denver Health and Hospital Authority
- Diversus Health
- Gunnison Valley Health
- Health Solutions
- Jefferson Center for Mental Health
- Mind Springs Health
- North Range Behavioral Health
- San Luis Valley Behavioral Health
- Solvista
- SummitStone Health Partners
- Valley-Wide Health Systems
- Your Hope Center

## BHST

- Centennial Mental Health Center (833-591-0454)
- Citadel Security (970-216-4384)
- Delta County Ambulance District (970-250-3531)
- Diversus Health Services (719-635-7000)
- First Response K-9 (719-849-3994)
- Guardian Transport & Security LLC (970-640-5957)
- Health Solutions
- North Range Behavioral Health
- Poudre Valley Health Care, Inc. (970-237-7919)
- SkyRide LLC (720-957-2024)
- UTE Pass Regional Ambulance District (719-687-9262)

# Update HCPF Enrollment

**Congratulations MCR!**

**~40% MCR agencies have completed updated BHA licensing**

**~30% MCR agencies are in process updated BHA licensing**

- Go to HCPF [provider web portal](#)
- Click Provider Maintenance
- Add BHA license
  - HCPF [quick guide](#)
  - if agency has BHA Approval as an Essential Provider, remember to check “essential” and include that BHA Approval Letter

# HCPF SNP Forum

Learn more about HCPF reimbursement for safety net providers

- [HCPF Safety Net Provider Webpage](#)
- Collaborative Safety Net Provider Forum
  - April 26th 10:00am-11:00am [Register in advance](#)

# Thank You and Questions

## BHA Mission:

To co-create a people-first behavioral health system that meets the needs of all people in Colorado

### Carey Boelter

Associate Director Crisis Services, BHA  
[carey.boelter@state.co.us](mailto:carey.boelter@state.co.us)

### Kelly Bowman

988 Enterprise & Crisis Line Program Manager  
[kelly.bowman@state.co.us](mailto:kelly.bowman@state.co.us)

### Marc Condojani

Manager of Crisis Services Colorado, BHA  
[marc.condojani@state.co.us](mailto:marc.condojani@state.co.us)

### Steven Wells

Crisis Program Manager, BHA  
[steven.wells@state.co.us](mailto:steven.wells@state.co.us)

## HCPF Mission:

To improve health care equity, access and outcomes for the people we serve while saving Coloradans money on health care and driving value for Colorado

### Jennifer Holcomb

Behavioral Health Managed Care Section Manager  
& SUD Senior Staff Authority, HCPF  
[jennifer.holcomb@state.co.us](mailto:jennifer.holcomb@state.co.us)

### Meghan Morrissey

Crisis Services Policy Advisor, HCPF  
[meghan.morrissey@state.co.us](mailto:meghan.morrissey@state.co.us)

## CDPHE Mission:

Advancing Colorado's health and protecting the places where we live, learn, work, and play.

### Alexandra Haas

Policy Supervisor of Health Facilities & EMS Division,  
CDPHE  
[alexandra.haas@state.co.us](mailto:alexandra.haas@state.co.us)



**COLORADO**  
Department of Health Care  
Policy & Financing



**COLORADO**  
Behavioral Health  
Administration



**COLORADO**  
Department of Public  
Health & Environment