

Welcome

We are Recording



Avoid sharing protected health information

Use Chat



Please ask questions

Slides



Will be Shared to webpage and via newsletter

Listening by Phone



Press *6 to unmute your line or *9 to raise hand

Closed Captioning



Click the Live Transcript icon at the bottom of your screen

HCPF/BHA/CDPHE Crisis Services Bi-Monthly Technical Assistance Collaborative Meeting

February 22, 2024
11-12:30pm

Agenda

- Welcome and Introductions
- HCPF Crisis Services Provider Enrollment Congratulations
- BHA Updates
 - Crisis Professional Scope of Practice
 - Learning Management System & BHA Crisis Assessment
- Funding Updates
- Data & Reporting in Crisis Services
 - SMART Act 2024
 - BHA Dashboard Update
 - CDPHE Review: BHST Data Requirements
- Licensing
 - Ground Ambulance Licensing
 - Behavioral Health Entity Licensure

Introductions



Meghan Morrissey
Crisis Services
Policy Advisor, HCPF



Jennifer Holcomb
Behavioral Health
Managed Care
Section Manager &
SUD Senior Staff
Authority, HCPF



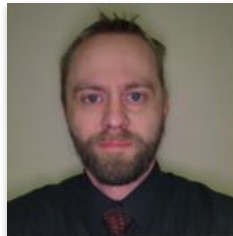
Alexandra Haas
Policy Supervisor
of Health Facilities
& EMS Division,
CDPHE



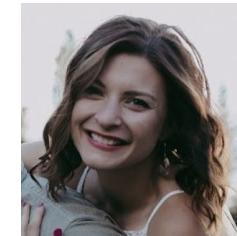
Marc Condojani
Manager of Crisis
Services Colorado,
BHA



Carey Boelter
Associate Director
Crisis Services,
BHA



Steven Wells
Crisis Program
Manager, BHA



Kelly Bowman
988 Enterprise &
Crisis Line Program
Manager, BHA

Current HCPF Enrollments

MCR

- Axis Health System
- Centennial Mental Health Center
- Denver Health and Hospital Authority
- Diversus Health
- Gunnison Valley Health
- Health Solutions
- Jefferson Center for Mental Health
- Mind Springs Health
- North Range Behavioral Health
- San Luis Valley Behavioral Health
- Solvista
- SummitStone Health Partners
- Valley-Wide Health Systems
- Your Hope Center

BHST

- Centennial Mental Health Center (833-591-0454)
- Citadel Security (970-216-4384)
- Delta County Ambulance District (970-250-3531)
- Diversus Health Services (719-635-7000)
- First Response K-9 (719-849-3994)
- Guardian Transport & Security LLC (970-640-5957)
- Health Solutions
- North Range Behavioral Health
- Poudre Valley Health Care, Inc. (970-237-7919)
- SkyRide LLC (720-957-2024)
- UTE Pass Regional Ambulance District (719-687-9262)

BHA Updates

Crisis Professional Scope of Practice

- 1) “Crisis Professional” means any person who has completed the BHA’s Crisis Professional Curriculum training and has received the Crisis Professional training current certificate of completion from the BHA specific to: Crisis Assessment, Management, De-escalation, Safety Planning and all relevant laws and provisions such that training is complete, and the person can lead a crisis response pursuant to the personnel definition of a “Crisis Professional” in BHA rule section 1.3.

- 1) The practice of a Crisis Professional may include, but not limited to:
 - a) Coordination with Colorado Crisis Services/988 dispatch personnel;
 - b) Coordination with Law Enforcement and/or Emergency Medical Services personnel;
 - c) On-site and/or telehealth response to crisis situations;
 - d) Provide de-escalation techniques;
 - e) Perform the BHA approved crisis assessment, in addition to the Columbia Suicide Severity Rating Scale;
 - f) Use of Naloxone or other harm reduction strategies and supplies to address overdose;
 - g) Consultation with Intervening Professionals as defined in Section 27-65-102(20), C.R.S.
 - h) Short-term interventions, stabilization in place;
 - i) Safety planning;
 - j) On-site triage to appropriate treatment modalities;
 - k) Referrals to community resources;
 - l) Follow-Up post crisis intervention;
 - m) Care coordination;

*Available on [HCPF MCR Webpage](#); [Crisis Professional Scope of Practice](#)

BHA LMS

- Crisis Professional Curriculum (CPC)
 - Slide decks are moving along, thanks to all who have reviewed and provided feedback!
 - BHA team working to finalize CEUs and college credit for participating in the CPC.
 - Launch date: Mid March for several courses, final courses to follow prior to summer.
- Crisis Assessment
 - Completed, thanks to our SMEs and advisory committee for review and feedback.
 - Launch date: TBD following release of the CPC Crisis Assessment training course.

Delayed Enforcement

The BHA previously announced a period of “delayed enforcement” to help the provider network familiarize and come into compliance with the new provider rules. During this period of time, adverse action will not be taken against a provider’s Behavioral Health Entity (BHE) license except in cases where health, safety and/or welfare is compromised. This period of delayed enforcement has been extended to allow providers more time to adjust to the updated provider rules, beginning January 1, 2024 and ending on July 1, 2024.

Email cdhs_bharulefeedback@state.co.us with questions.

Funding Updates

ARPA Funds

- Deadlines for ASO reconciliation to BHA
 - steven.wells@state.co.us
- APRA funds guidelines
 - [HCPF Fact Sheet: Supplanting vs Supplementing](#)

Spending Time Frame	Reconciliation Due to BHA for MCR
Q1(July-Sept)	10/30/23
Q2 (Oct-Dec)	1/30/24
Q3 (Jan-Mar)	4/30/24
Q4 (Apr-Jun)	TBD

BHST Billing Updates

Known issues:

- A0425 rate
 - request in progress to update mileage rate to align with other HCPF transportation
- 250 mileage limit on A0425
 - request to CMS in progress

Funding Opportunities

[BHA Funding Opportunities](#)

[EMS Funding Opportunities](#)

[Medicare Rural Hospital Flexibility Program -
Emergency Medical Services Supplement](#)

[National Aging and Disability Transportation Center](#)

[Transportation Safety Foundation Grant Application](#)



COLORADO

Department of Health Care
Policy & Financing

988 Request for Proposal

Jan. 24, 2024

[RFP IBEH 2024000199 Crisis 988 Suicide Prevention Lifeline Network Act](#)

This solicitation seeks a vendor to operate a statewide call center for Colorado Crisis Services and the 988 Suicide & Crisis Lifeline that will receive and respond to Crisis and 988 phone calls, texts and chats.

C.R.S. 27-65-103; C.R.S. 27-64-103

Data & Reporting

SMART Act 2024

The SMART Act, or the State Measurement for Accountable, Responsive and Transparent Government Act, requires state government entities to publicly share annual performance goals.

Available at:

<https://leg.colorado.gov/content/shhs2024asmartact>

BHA Dashboard Update

- Dashboard for Crisis Resolution Teams has been updated for October 2023 with the most current data
- Workgroup with ASOs to clarify data dictionary

CDPHE & BHST

BHST Provider

If you are interested in providing transportation to people in BH Crisis,

STEP 1: Obtain the appropriate licenses and permits from the counties of operation:

- [Secure Transport web page](#) to find county contacts
- [Register a profile with CDPHE](#)

STEP 2: If you would like to receive HCPF funding:

- Complete [provider enrollment](#)
- Learn more via the [Behavioral Health Secure Billing Manual](#)

CDPHE Data Requirements

Data Requirements - 6 CCR 1011-4, Part 6

- Secure Transportation services shall submit... the following data by **March 1** for the following previous calendar year:
 - The total number of transports
 - The total number of adults (18+) served
 - The total number of minors (17 and under) served
 - The type of location where individuals were picked up/dropped off

Data Requirements - 6 CCR 1011-4, Part 6 Cont'd

- Secure Transportation services shall submit... the following data for the following previous calendar year on **March 1**:
- - The total number of individuals who were transported more than one time
 - The total number of transports that the service was declined due to lack of S.T. resources
 - Demographic information (e.g., zip code, totals by location, gender, race & ethnicity)
 - The total number of clients transported who were not on involuntary holds

Secure Transportation Spreadsheet

- CDPHE has a downloadable spreadsheet that can be accessed at <https://cdphe.colorado.gov/emergency-care/air-and-ground-ambulance/behavioral-health-secure-transport>
- This is also the website to access Profiles, the data dictionary, and submit the completed spreadsheet

Submission Process & Data Privacy

To protect client information, data submission must be encrypted prior to sending to the department. To do that, you must complete the following steps:

1. There is a button at the bottom of <https://cdphe.colorado.gov/emergency-care/air-and-ground-ambulance/behavioral-health-secure-transport> entitled “Submit encrypted data”
2. Create a password for your email encryption account
3. Click ‘New Message’ and complete the email as you typically would.
4. Attach the Secure Transportation Spreadsheet from your agency, address email to cdphe.securetransportationdata@state.co.us and click ‘Send’.

Licensing

Ground Ambulance Licensing

Existing law remains in effect through June 30, 2024, and requires counties and cities-and-counties to license and permit ground ambulance services and vehicles through June 30, 2024. Counties' and city-and-counties' continuing exercise of this authority is necessary for two critical reasons:

- Ground ambulance services must be licensed in good standing by the appropriate legal regulatory authority to receive reimbursement for their EMS transport services through June 30, 2024, and
- Ground ambulance agencies that hold a valid county or city-and-county issued license as of June 30, 2024 will be eligible to receive, at no cost, an initial state license and state permit for each ambulance vehicle under the new state licensure program, effective July 1, 2024.

All ground ambulance services must be licensed in good standing by the count[ies] and city-and-count[ies] in which they operate through June 30, 2024.



BHA Licensing



What are “Provider Rules”?

- Provider rules create licenses, designations, and approvals for behavioral health agencies (not individual professionals)
- Some credentials are required to operate a certain kind of business, others are optional to access specific funding sources
- Requirements for providers with the goal of ensuring health, safety, welfare, and quality care for individuals receiving services
- Enforced by Quality & Standards Division at BHA

[Behavioral Health 2 CCR 502-1](#)

[Provider Rules Adopted 11/3/23; Effective 1/1/24](#)

What changed in the Provider Rules?

Effective January 1, 2024:

1. BHA takes over the Behavioral Health Entity (BHE) license from CDPHE. This is a license type for both mental health and substance use disorder providers.
2. Safety net provider approval goes live. This allows providers to participate in the safety net and receive enhanced payment by meeting safety net standards.
3. 27-65 Designation includes new requirements as set out in HB 22-1256.

BHE Base License



Endorsements

Service Type Endorsements

- Outpatient and High Intensity Outpatient
- Residential
- Emergency/Crisis
 - Including Mobile Crisis
- Recovery Supports

Population-Specific Endorsements

- Services for Children and Families
- Gender Responsive Treatment
- Criminal Justice Services
- Involuntary/Emergency Commitment Services for SUD

Endorsements Applicable to Comprehensive Community BH Safety Net Providers

- Outpatient Competency Restoration
- Outreach, Education, and Engagement
- Care Management

Behavioral Health Safety Net Providers

Essential Behavioral Health Safety Net Provider

Provides care coordination and one or more of the following:

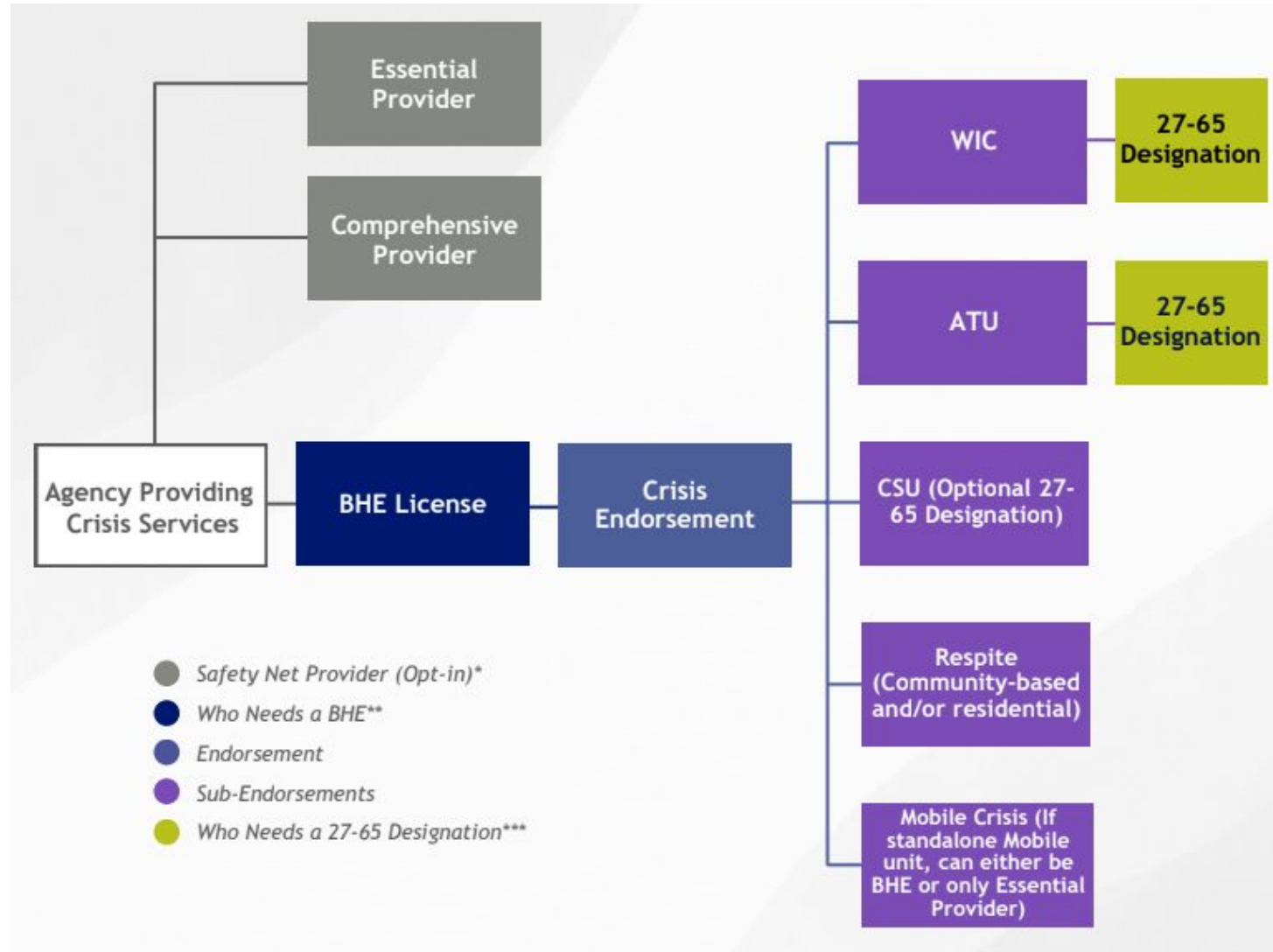
- Emergency/Crisis
- Outpatient
- Intensive Outpatient
- Residential
- Withdrawal Management
- Inpatient
- Integrated Care
- Hospital Alternatives

Comprehensive Community Behavioral Health Provider

Provides care coordination and all of the following:

- Emergency/Crisis
- Outpatient
- Intensive Outpatient
- Care Management
- Outreach, Engagement, Education
- Recovery Supports
- Outpatient Competency Restoration

Agency Providing Crisis Services - BHA Licensing



Schedule a Support Session

<https://bha.colorado.gov/resources/laws-and-rules>

Laws and Rules

Update (Dec. 5, 2023) – The State of Colorado is entering a period of regulatory transition and behavioral health reform.

The Behavioral Health Administration (BHA) is responsible for regulating the provision of behavioral health services in Colorado by developing and monitoring reasonable and proper rules and regulations. In alignment with [House Bill 19-1237](#), [House Bill 22-1278](#) and [House Bill 23-1326](#), BHA is updating its licensing structure and process.

The [State Board of Human Services](#) passed the updated [BHA Provider Rules](#) (adopted Nov. 3, 2023), setting the foundation for new rules and regulations to take effect for behavioral health providers beginning on Jan. 1, 2024.

On and after Jan. 1, 2024, BHA will have the authority to issue Behavioral Health Entity (BHE) licenses to [agencies that qualify as a BHE](#) and will be responsible for the approval of Essential and Comprehensive Providers that elect to participate in the [safety net system](#) to ensure all those in Colorado who need services have access to them.

The authority to issue BHEs will transition to BHA from the Colorado Department of Public Health and Environment (CDPHE) on Jan. 1, 2024, and will replace the existing structure of Substance Use Disorder (SUD) treatment licenses, Community Mental Health Center (CMHC) designations, and Community Mental Health clinic (CMHC) designations in the state of Colorado.

The BHE license model provides a “cafeteria-style” license in which an agency holds a single BHE license with different endorsements, allowing the agency to offer various services at multiple locations. This allows flexibility and ultimately will support easier addition of services and locations for the agency to meet the needs of their populations served.

This transition is expected to occur into the early months of 2025.

Agencies are encouraged to review the [Agency Transition Guide](#) to help determine the starting point for your agency during this transition, and are encouraged to bookmark and visit this page frequently, as updated information and resources will be released as they become available.

Transition support for current providers

Providers that hold a current BHA-issued license and/or designation are invited to book a technical support session focusing on your transition needs.

 [Book a support session](#)

Q&S Newsletter

Sign up to receive updates, engagement opportunities and resources from the BHA's Quality and Standards division.

 [Sign up today](#)



Thank You and Questions

BHA Mission:

To co-create a people-first behavioral health system that meets the needs of all people in Colorado

Carey Boelter

Associate Director Crisis Services, BHA
carey.boelter@state.co.us

Kelly Bowman

988 Enterprise & Crisis Line Program Manager
kelly.bowman@state.co.us

Marc Condojani

Manager of Crisis Services Colorado, BHA
marc.condojani@state.co.us

Steven Wells

Crisis Program Manager, BHA
steven.wells@state.co.us

HCPF Mission:

To improve health care equity, access and outcomes for the people we serve while saving Coloradans money on health care and driving value for Colorado

Jennifer Holcomb

Behavioral Health Managed Care Section Manager
& SUD Senior Staff Authority, HCPF
jennifer.holcomb@state.co.us

Meghan Morrissey

Crisis Services Policy Advisor, HCPF
meghan.morrissey@state.co.us

CDPHE Mission:

Advancing Colorado's health and protecting the places where we live, learn, work, and play.

Alexandra Haas

Policy Supervisor of Health Facilities & EMS Division,
CDPHE
alexandra.haas@state.co.us



COLORADO
Department of Health Care
Policy & Financing



COLORADO
Behavioral Health
Administration



COLORADO
Department of Public
Health & Environment