

CO-SOC Implementation Advisory Committee

Colorado Department of Health Care Policy & Financing (HCPF)



COLORADO
Department of Health Care
Policy & Financing

Acronyms

BHA - Behavioral Health Administration

CANS - Child and Adolescent Needs and Strengths tool

CO-SOC - Colorado System of Care

CSU - Colorado State University

ESA - Enhanced Standardized Assessment

EFFT - Enhanced Functional Family Therapy

HCPF - Colorado Department of Health Care Policy and Financing

EHFW - Enhanced High Fidelity Wraparound

IHBT - Intensive Home Based Treatment

ICC - Intensive Care Coordination

NWIC - National Wraparound Implementation Center

EMST - Enhanced Multisystemic Therapy

PRTF - Psychiatric Residential Treatment Facility

QRTP - Qualified Residential Treatment Program

RAE - Regional Accountable Entity

SOC - System of Care

WCC - Workforce Capacity Center

What is System of Care:

The whole is greater than the sum of parts

Care coordination in Current System



Well intended, but has minimal quality outcomes for children with complex needs

Care coordination in System of Care



Have hands-on and in-depth coordination of intensive treatment and support services
= strong quality outcomes

SOC Philosophy: Core Values

- Family and Youth Driven
- Community-based
- Culturally and Linguistically Competent



SOC Philosophy: Core Principles

- Comprehensive array of services and supports
- Individualized and strength-based services and supports
- Evidence-based and evidence-informed practices
- Trauma-informed
- Least restrictive and natural environment for the Member and family
- Partnerships with the Member and family
- Interagency collaboration
- Care coordination
- Developmentally appropriate services and supports
- Data driven and accountability; and
- Protection of Member and family rights and advocacy.



Objective:

To provide strategic guidance and expertise to the Department of Health Care Policy & Financing (HCPF) to effectively expand and enhance Intensive Behavioral Health Services (IBHS) for children, youth, and young people in Colorado under 21 years of age. The committee aims to ensure that the implementation of intensive in-home and community-based behavioral and mental health services, care coordination, mobile crisis intervention, and stabilization services is culturally relevant, family-centered, and child-driven. This objective includes promoting best practices for service delivery in the most integrated and least restrictive settings, ultimately improving access to quality mental health care for youth diagnosed with mental health or behavioral disorders.



Housekeeping:

This is a membership committee meeting with the public in attendance.

Please keep Microphones on mute until ready to speak.

We will have breaks between agenda items for Public Comment.

Type questions into Q and A or save for public comment time.



COLORADO

Department of Health Care
Policy & Financing

Tri-Chairs

Cristen Bates, Colorado Department of Health Care Policy & Financing

Kelly Causey, Colorado Behavioral Health Administration

Jamie Ulrich, County Department of Human Services

Agenda

- 11am - 11:05am Introduction and November Meeting Minutes Approval - Kelly A.
- 11:05am - 11:20am Announcements
 - Workgroup Update - Stacey D. / Kelly A.
 - CO-SOC Year One Update - Stacey D.
- 11:20am - 11:30am Charter Review and Approval / Attendance Review - Kelly C.
- 11:30am - 12:00pm Questions and Answers from Documentation Review
 - [NWIC Enhanced High Fidelity Wraparound Fact Sheet release](#)
 - [Frequently Asked Questions](#)
 - [Provider Fact Sheet](#)
 - [HCPF LRFI 5 Youth System of Care](#)
 - [IHBT Research Article](#)
 - Q and A
- 12:00pm - 12:15pm - Multisystemic Therapy and Functional Family Therapy Examples - Becky Wyperd
- 12:15 - 12:30pm Public Comment



Roll Call & Meeting Minute Approval



Announcements



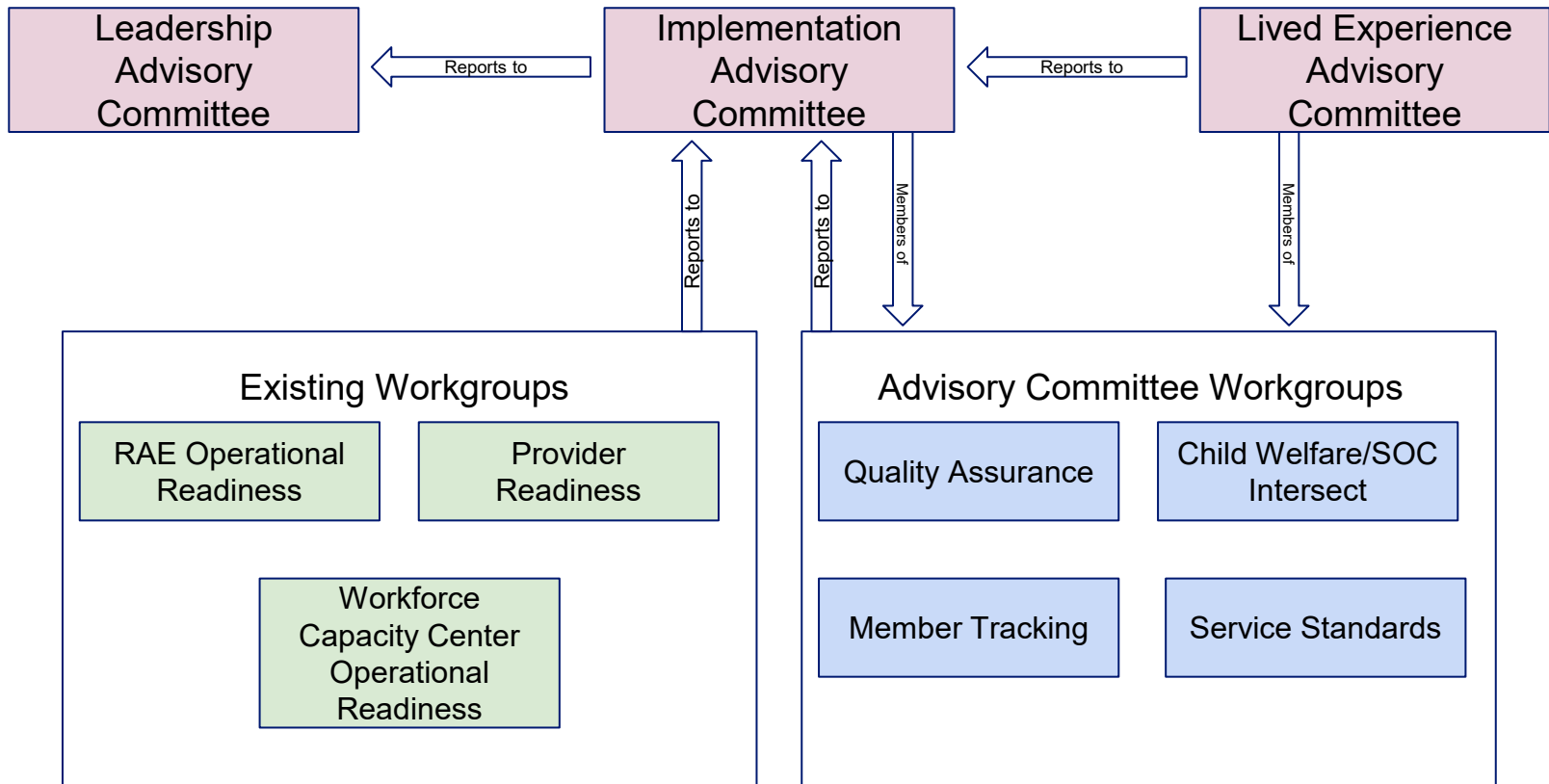
COLORADO

Department of Health Care
Policy & Financing

Workgroup Update

- Service Standards: Start with NWIC EHFWS, then IHBT
 - Tackles policy areas related to service delivery standards and adherence to model fidelity standards.
- Quality Assurance: Start Spring 2026
 - Tackles quality metrics, dashboards, data sharing, etc.
- Member Tracking: Start Winter 2026
 - Tackles areas that are specific to member experience and gaps in the service delivery as experienced by members.
- Child Welfare / SOC Intersect: Start Winter 2026
 - Develops a plan on how the child welfare system and SOC will interact and intersect for agencies and families.
- [Poll to express workgroup interest](#)





Existing CO-SOC
Advisory Committee

Existing workgroup, not open to
advisory committee members

Workgroup, open to Lived Experience and
Implementation advisory committee members



Workgroup Update

- Difference between workgroups and advisory committee meetings
- Variety of engaged stakeholders
- Pass along the call for workgroup members within your network



COLORADO

Department of Health Care
Policy & Financing

CO-SOC year one updates

- The Department of Health Care Policy & Financing (HCPF) is excited to announce that the Colorado System of Care (CO-SOC) is officially serving Medicaid Members.
- Each Regional Accountability Entity has identified and contracted with one at least one Agency for Enhanced High Fidelity Wraparound.
- There are 5 Agencies that will be connected to the Workforce Capacity Center in Cohort One of this work and a formal kick off.
- HCPF expanded the definitions of IHBT in year one beyond EMST and EFFT.



COLORADO

Department of Health Care
Policy & Financing

Charter Review

- Updated to reflect:
 - Medicaid System of Care to Colorado System of Care (CO-SOC)
 - Member and leadership updates
 - Attendance Requirements
- Motion for approval of Charter updates



Q and A Document Review

Documents reviewed:

- [NWIC Enhanced High Fidelity Wraparound Fact Sheet](#)
- [Frequently Asked Questions](#)
- [Provider Fact Sheet](#)
- [HCPF LRFI 5 Youth System of Care](#)
- [IHBT Research Article](#)
- System of Care Quarterly Report: January 2026



COLORADO

Department of Health Care
Policy & Financing

Question 1:

How does the CO SoC implementation interface with the proposed dramatic changes to the CDHS/HCPF service delivery systems - fiscally and programmatically? How will these changes impact Children/Youth High Acuity Behavioral Health service delivery?



Question 2:

The possible utilization of the ACE Medical Home model to facilitate expedited approach to implementation

Client Impact- MST



COLORADO

Department of Health Care
Policy & Financing

Client Impact- FFT



COLORADO

Department of Health Care
Policy & Financing

Public Comment

Thank you!