

# CO-SOC Statewide Leadership Advisory Committee

Colorado Department of Health Care Policy & Financing (HCPF)

# Acronyms

BHA - Behavioral Health Administration

CANS - Child and Adolescent Needs and Strengths tool

CO-SOC - Colorado System of Care

CSU - Colorado State University

ESA - Enhanced Standardized Assessment

EFFT - Enhanced Functional Family Therapy

HCPF - Colorado Department of Health Care Policy and Financing

EHFW - Enhanced High Fidelity Wraparound

IHBT - Intensive Home Based Treatment

ICC - Intensive Care Coordination

NWIC - National Wraparound Implementation Center

EMST - Enhanced Multisystemic Therapy

PRTF - Psychiatric Residential Treatment Facility

QRTP - Qualified Residential Treatment Program

RAE - Regional Accountable Entity

SOC - System of Care

WCC - Workforce Capacity Center

# What is System of Care:

## The whole is greater than the sum of parts

### Care coordination in Current System



Well intended, but has minimal quality outcomes for children with complex needs

### Care coordination in System of Care



Have hands-on and in-depth coordination of intensive treatment and support services  
= strong quality outcomes

# SOC Philosophy: Core Values

- Family and Youth Driven
- Community-based
- Culturally and Linguistically Competent



# SOC Philosophy: Core Principles

- Comprehensive array of services and supports
- Individualized and strength-based services and supports
- Evidence-based and evidence-informed practices
- Trauma-informed
- Least restrictive and natural environment for the Member and family
- Partnerships with the Member and family
- Interagency collaboration
- Care coordination
- Developmentally appropriate services and supports
- Data driven and accountability; and
- Protection of Member and family rights and advocacy.



# Objective:

To provide strategic guidance and expertise to the Department of Health Care Policy & Financing (HCPF) to effectively expand and enhance Intensive Behavioral Health Services (IBHS) for children, youth, and young people in Colorado under 21 years of age. The committee aims to ensure that the implementation of intensive in-home and community-based behavioral and mental health services, care coordination, mobile crisis intervention, and stabilization services is culturally relevant, family-centered, and child-driven. This objective includes promoting best practices for service delivery in the most integrated and least restrictive settings, ultimately improving access to quality mental health care for youth diagnosed with mental health or behavioral disorders.



**COLORADO**

Department of Health Care  
Policy & Financing

# Housekeeping:

This is a membership committee meeting with the public in attendance.

Please keep Microphones on mute until ready to speak.

We will have time at the end of the meeting for Public Comment.

Type questions into Q and A or save for public comment time.



**COLORADO**

Department of Health Care  
Policy & Financing

# Tri-Chairs

Adela Flores-Brennan, Colorado Department of Health Care Policy & Financing

Tamara Pogue, Summit County Commissioner

Guinevere Munib, Lived Experience



# Why does Colorado System of Care matter?



**COLORADO**

Department of Health Care  
Policy & Financing

# Agenda

- Introductions 3:30pm - 3:35pm
- July Meeting Minute Approval 3:35pm - 3:40pm
- Announcements 3:40pm - 3:50pm
  - Leadership Changes - Cristen B.
  - CO-SOC Year One Updates - Stacey D.
  - Charter Updates - Kelly A.
  - Workgroup Opportunity - Stacey D.
- Introduction of IHBT (Intensive Home-based treatment) - Stacey D. 3:50-4:05pm
- Questions and Answers from Documentation Review 4:05pm-4:15pm
  - [NWIC Enhanced High Fidelity Wraparound Fact Sheet release](#)
  - [Frequently Asked Questions](#)
  - [Provider Fact Sheet](#)
  - [HCPF LRFI 5 Youth System of Care](#)
  - [IHBT Research Article](#)
  - [System of Care Quarterly Report](#)
  - Q and A
- Next steps 4:15pm - 4:20pm
- Public Comment 4:20pm - 4:30pm



**COLORADO**

Department of Health Care  
Policy & Financing

# Roll Call & Meeting Minute Approval



**COLORADO**

Department of Health Care  
Policy & Financing

# Announcements



# Leadership Changes



**COLORADO**

Department of Health Care  
Policy & Financing

# Charter Updates

- Name change from Medicaid System of Care to Colorado System of Care
- Leadership changes
- Motion to approve Charter updates



**COLORADO**

Department of Health Care  
Policy & Financing

# CO-SOC year one updates

- The Department of Health Care Policy & Financing (HCPF) is excited to announce that the Colorado System of Care (CO-SOC) is officially serving Medicaid Members.
- Each Regional Accountability Entity has identified and contracted with one at least one Agency for Enhanced High Fidelity Wraparound.
- There are 5 Agencies that will be connected to the Workforce Capacity Center in Cohort One of this work and a formal kick off.
- HCPF expanded the definitions of IHBT in year one beyond EMST and EFFT.

# Joint Budget Committee/ Budget Priorities Update



**COLORADO**

Department of Health Care  
Policy & Financing



# Budgeting for CO-SOC

## Identification Tool

Screen to determine who needs an Enhanced Standardized Assessment

## Enhanced Standardized Assessment

Standardized assessment (w/ CANS) to uniformly determine a child's needs and service type.

## Enhanced Intensive Care Coordination

High Fidelity Wraparound using the NWIC Model

## In-Home Crisis Stabilization Services

Leverage existing mobile crisis and Crisis Resolution Teams

## Intensive Home Based Treatment

Use existing models in Multisystemic Therapy (MST) and Functional Family Therapy (FFT)

## Support Services

Long-term in-home supports such as respite and therapeutic mentoring

## Behavioral Services

Behaviorist e-consult via doc-to-doc consultation from a behavior specialist to treating provider.



# Making Progress

## Past Program

- Outpatient
- Limited intensive behavioral health services and treatment
- Long LOS, OOS Residential



## New Programs

- Enhanced Screening, Assessment
- HFW
- Expanded Intensive Home Based Services



## System of Care

- Increased community based care
- Reduced lengths of stay in residential settings
- Discharge planning supports smooth transitions of care from residential to community and home

# CO-SOC Financing

## Existing Services, forecast budget

- Enhanced Screening and Assessment Tools
- Intensive Care Coordination & High Fidelity Wraparound
- Intensive Home Based Treatment (IHBT)

## Existing Services, Cost Savings

- Policies are driving expanded access to community based services
- Cost per day for CO-SOC \$71
- Cost per day for residential

## New Services, New budget request

- Expanded crisis services statewide
- Additional Intensive Home Based Treatment models
- Consultation and behavioral services

# Questions



**COLORADO**

Department of Health Care  
Policy & Financing

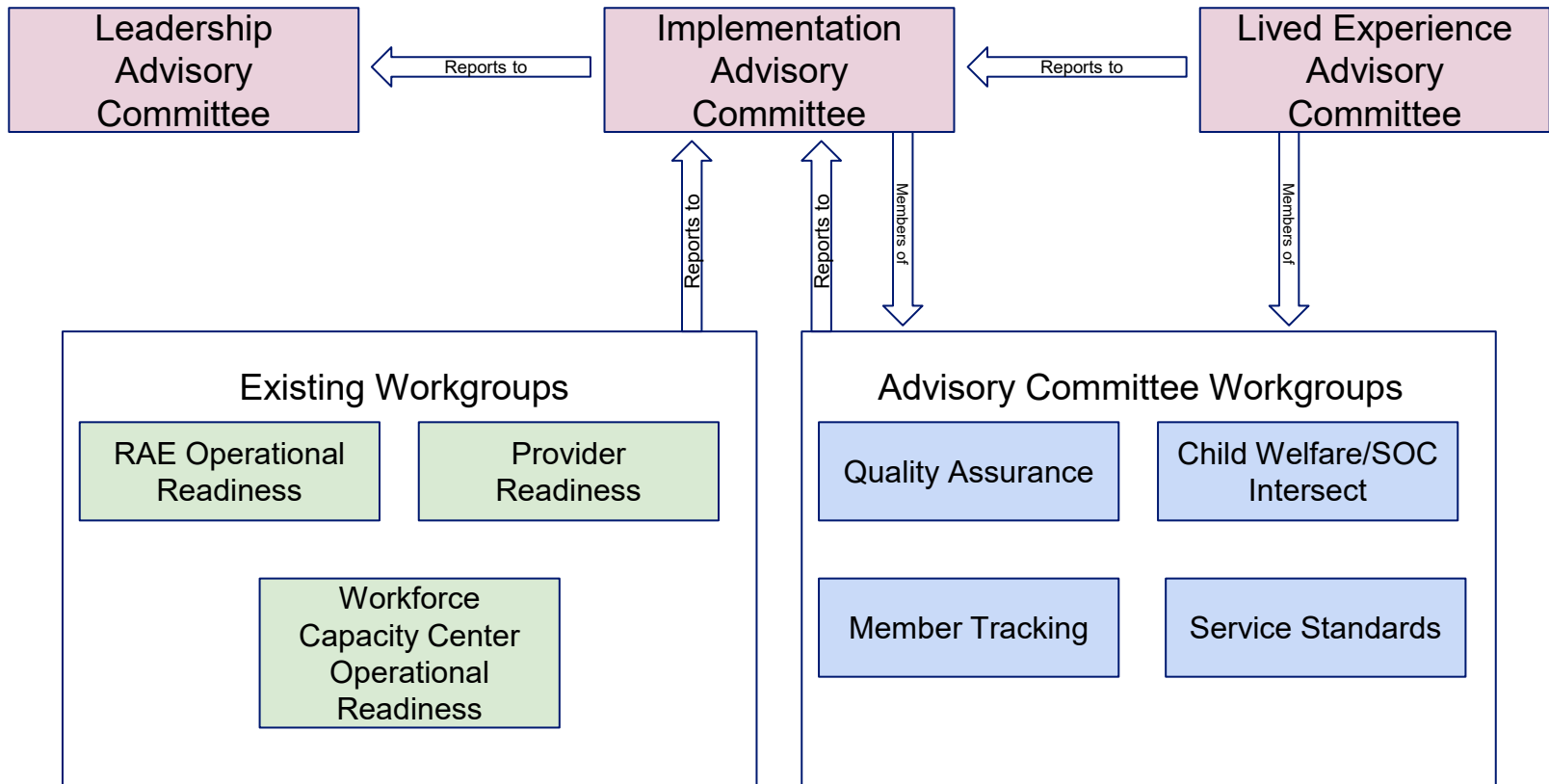
# Workgroup Opportunity

- Service Standards: Start with NWIC EHFWS, then IHBT
  - Tackles policy areas related to service delivery standards and adherence to model fidelity standards.
- Quality Assurance: Start Spring 2026
  - Tackles quality metrics, dashboards, data sharing, etc.
- Member Tracking: Start Winter 2026
  - Tackles areas that are specific to member experience and gaps in the service delivery as experienced by members.
- Child Welfare / SOC Intersect: Start Winter 2026
  - Develops a plan on how the child welfare system and SOC will interact and intersect for agencies and families.
- [Poll to express workgroup interest](#)



# Existing Workgroups

- RAE Operational Readiness
  - Tackles operational readiness for RAEs as sections of the SOC is rolled out, included amendments to contracts.
- Provider Readiness
  - Work with providers and intermediaries on provider expectations and provider experience within SOC.
- Workforce Capacity Center Operational Readiness
  - Work with CSU, BHA, HCPF, and subcontractors of WCC to tackle operational readiness for RAEs as sections of the SOC is rolled out.



Existing CO-SOC  
Advisory Committee

Existing workgroup, not open to  
advisory committee members

Workgroup, open to Lived Experience and  
Implementation advisory committee members



**COLORADO**  
Department of Health Care  
Policy & Financing

# Discussion





# What is IHBT

Intensive Home-Based Treatment (IHBT) is a framework and set of practice standards for delivering intensive, mental health services for children and youth with serious emotional disabilities and their families with an emphasis on family systems/supports. IHBT is provided in the home, school and community where the youth live, with the goal of stabilizing mental health concerns, identifying educational needs and supports, and safely maintaining the youth in the least restrictive, most normative environment.



**COLORADO**

Department of Health Care  
Policy & Financing

# What is an IHBT framework

IHBT is a framework by which the service is delivered with defined Clinical Programing and Clinical Practice Standards. These include such components as:

- Quality supervision
- Commitment to flexibility and accessibility
- Safety planning
- Intensity of intervention
- Outcome and quality monitoring
- Cultural Competence
- Identification of strengths and needs



**COLORADO**

Department of Health Care  
Policy & Financing

# What is IHBT

IHBT is a comprehensive service that offers a range of individual treatment elements integrated into a single coordinated service. These elements typically include:

- crisis response, stabilization, and safety planning;
- psychoeducational skill building with youth;
- skill building with caretakers (parenting and behavior management);
- cognitive and emotional coping with a focus on trauma-informed care;
- family systems therapy; and
- resilience and support-building interventions



# IHBT

HCPF will expand definition of IHBT services in Year One beyond Enhanced Multisystemic Therapy (EMST) and Enhanced Functional Family Therapy (EFFT). HCPF will work with stakeholders to identity an IHBT Framework and Structure specific to Colorado (CO-IHBT)

Anticipated Stakeholder work in early 2026



**COLORADO**

Department of Health Care  
Policy & Financing

# IHBT

- MST and FFT are models of treatment within the IHBT framework
- “Enhanced” recognizes the work under CO-SOC and with the WCC regarding the commitment and fidelity needed to serve children and youth with the highest acuity needs
- Building off of existing provider network for Intensive Home-Based Treatment



# Questions



**COLORADO**

Department of Health Care  
Policy & Financing

# Q and A Document Review

Documents reviewed:

- [NWIC Enhanced High Fidelity Wraparound Fact Sheet](#)
- [Frequently Asked Questions](#)
- [Provider Fact Sheet](#)
- [HCPF LRFI 5 Youth System of Care](#)
- [IHBT Research Article](#)
- [System of Care Quarterly Report: January 2026](#)



# Question 1:

- How will the WCC Workforce Capacity Center Support behavioral health workforce recruitment, retention, and provider expansion, particularly in rural and frontier communities.?
- How will the WCC address these gaps? Current number of youth served in CO-SOC? How are these data collected?
- What are the considerations and timeframe to clarify re. these costs?
- There are other one-time funding requests that would be required for technology enhancements to upgrade provider EHR systems and health information exchange to share client information across the different child serving systems”—anticipated barriers and delays?
- Training of new providers will begin January 2026” Training has begun? How many enrolled? Timeframe for training and credentialing? In-person, remote, hybrid?



**COLORADO**

Department of Health Care  
Policy & Financing



# Next Steps

- Complete [workgroup interest poll](#)
- Review monthly emails and complete document review
- [Submit Q and A](#) to inform agenda development



# Public Comment

# Thank you!