

Trading Partner Testing Packet

Information in this Colorado Medical Assistance Program Trading Partner Testing Packet is provided to trading partners who intend to exchange electronic healthcare transactions with the Colorado Medical Assistance Program.

Colorado Medical Assistance Program Trading Partners

Colorado interChange is a transaction processing system used by the Colorado Medical Assistance Program. All entities that currently exchange data with the Colorado Medical Assistance Program, known as trading partners, are required to register and test for connectivity and Health Insurance Portability and Accountability Act of 1996 (HIPAA) compliance with this system.

To begin exchanging information with the Colorado Medical Assistance Program, all trading partners are required to enroll as a trading partner on the [Provider Web Portal](#).

Upon successful completion of the trading partner enrollment, a trading partner will receive a nine-digit Trading Partner ID (TPID) and instructions on how to set up an account on the Web Portal.

Once the account is set up, trading partners can begin the testing phase for the Colorado Medical Assistance Program.



Testing for Standard Trading Partners

Trading partners are required to follow these steps to become authorized to exchange data with the Colorado Medical Assistance Program:

1. Complete the trading partner enrollment on the [Provider Web Portal](#). At the end of the trading partner enrollment process, the trading partner will be asked to agree to the terms of the Trading Partner Agreement. Read through the Trading Partner Agreement, which can be downloaded.

Agree to the Trading Partner Agreement:

- a) Click the required "Trading Partner Agreement" link.
- b) Select the "I accept" checkbox to acknowledge the electronic signature.
- c) Enter the trading partner name.

Once the trading partner profile has been completed and the Trading Partner Agreement accepted, the trading partner will be assigned a nine-digit Trading Partner ID (TPID).

2. Register as an Electronic Data Interchange (EDI) user by establishing an account on the [Provider Web Portal](#). The TPID is required to set up a secure account prior to exchanging transactions. While creating an EDI user account, agree to the terms of the Trading Partner Electronic Use Agreement. After reading through the Electronic Use Agreement, click the "I Agree" box to agree.
3. Change the environment indicator in interchange control segment 15 (ISA 15) to "T" in the trading partner's claim submission software.
4. Mandatory Testing:
 - If applicable, create and submit 10 test claims for 837D (Health Care Claim: Dental) to test connectivity and HIPAA compliance with Colorado interChange. Refer to the v5010X12 837D Companion Guide on the [Electronic Data Interchange \(EDI\) Support web page](#).
 - If applicable, create and submit 10 test claims for 837I (Health Care Claim: Institutional) to test connectivity and HIPAA compliance with Colorado interChange. Refer to the v5010X12 837I Companion Guide on the [Electronic Data Interchange \(EDI\) Support web page](#).
 - If applicable, create and submit 10 test claims for 837P (Health Care Claim: Professional) to test connectivity and HIPAA compliance with Colorado interChange. Refer to the v5010X12 837P Companion Guide on the [Electronic Data Interchange \(EDI\) Support web page](#).
 - If applicable, test the 270/271 (Health Care Eligibility/Benefit Inquiry and Information Response) batch transaction using 10 members. Refer to the v5010X12 270/271





Companion Guide on the [Electronic Data Interchange \(EDI\) Support web page](#).

- If applicable, test the 276/277 (Health Care Claim Status Request/Response) batch transaction using 10 claim requests. Refer to the v5010X12 276/277 Companion Guide on the [Electronic Data Interchange \(EDI\) Support web page](#).
5. Download the Functional Acknowledgement (999) for the test transactions submitted to the Colorado Medical Assistance Program. The 999 is available within two hours of a successful transmission. If the trading partner does not receive a 999 or a TA1, the trading partner should contact the [Provider Services Call Center](#) with any questions. If the trading partner does not receive a 999 indicating the file was accepted or receives a TA1 Interchange Acknowledgement (TA1) file rejection, the trading partner will not be authorized for Colorado interChange and must retest until an "accepted" 999 is received.

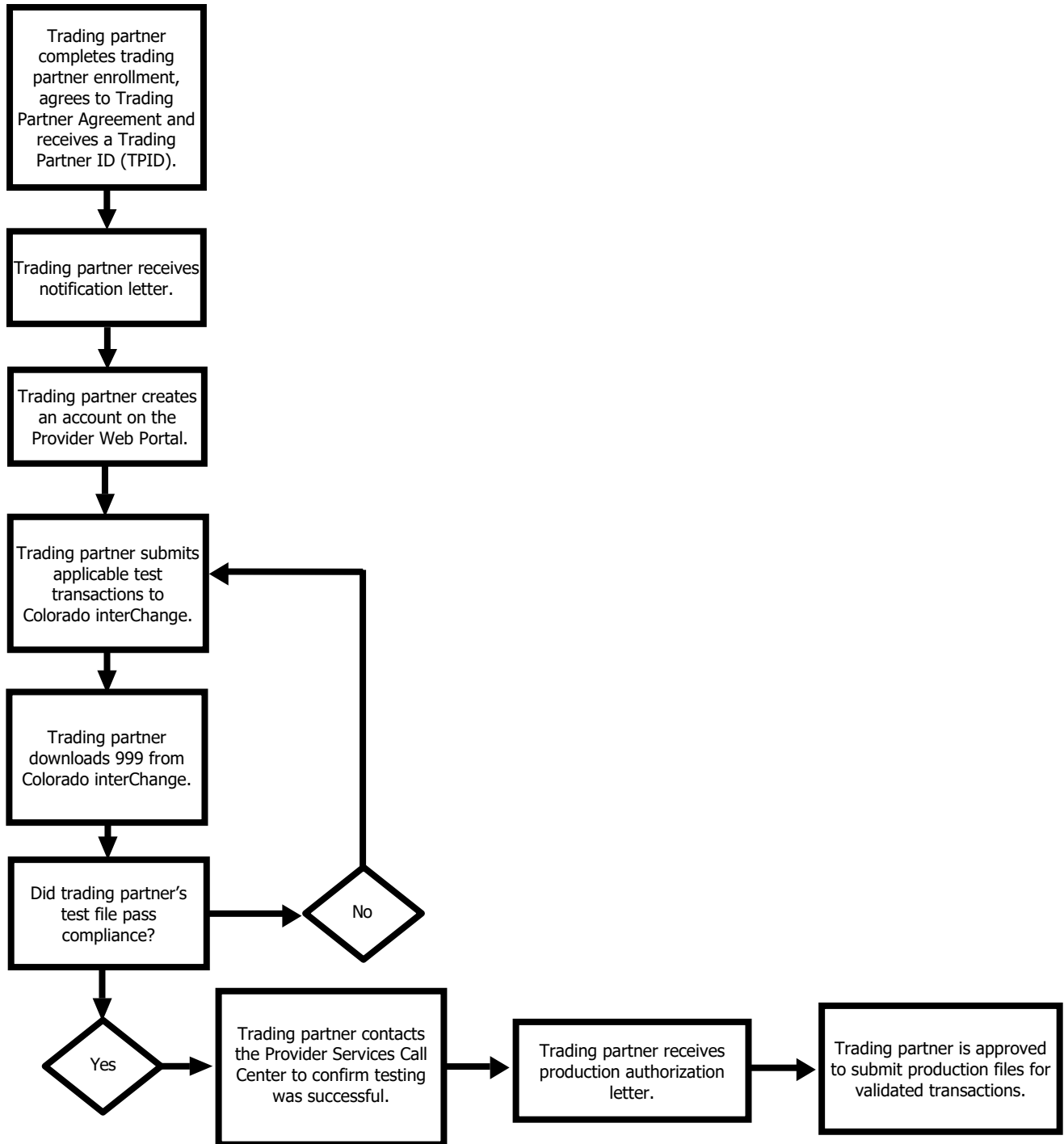
Contact the [Provider Services Call Center](#) to validate that the trading partner has received an "accepted" 999 and can connect successfully to Colorado interChange. Trading partners will receive a production authorization letter notifying them that the transaction sets for which they tested are approved.

6. Once testing is complete and the trading partner has received the production authorization letter, the trading partner must change the environment indicator in Colorado interChange control segment 15 (ISA 15) to "P."





Trading Partner Testing Flowchart





Testing Checklist

Use the following checklist to track completion of the requirements for trading partner testing.

| Complete? | Testing Requirement |
|--|---|
| Documentation Completion | |
| <input type="checkbox"/> | Complete trading partner enrollment and receive a Trading Partner ID (TPID). |
| Registration | |
| <input type="checkbox"/> | Complete EDI user registration by setting up an account on the Provider Web Portal and agreeing to the Trading Partner Agreement. |
| Setup for testing | |
| <input type="checkbox"/> | Change the environment indicator in Colorado interChange control segment 15 (ISA 15) to "T" in the trading partner's submission software. |
| Testing | |
| Submit or receive test files to https://mft.gainwelltechnologies.com/colorado-fts for applicable transactions. Note: SFTP users will need to prefix their user ID with colorado-fts/username. HTTPS users do not need to use prefix. | |
| <input type="checkbox"/> | 005010X279A1 — Health Care Eligibility Benefit Inquiry and Response (270/271) |
| <input type="checkbox"/> | 005010X224A2 — Health Care Claim: Dental (837D) |
| <input type="checkbox"/> | 005010X223A2 — Health Care Claim: Institutional (837I) |
| <input type="checkbox"/> | 005010X222A1 — Health Care Claim: Professional (837P) |
| <input type="checkbox"/> | 005010X212 — Health Care Claim Status Request & Response (276/277) |
| <input type="checkbox"/> | 005010X220A1 — Benefit Enrollment and Maintenance (834) |
| <input type="checkbox"/> | 005010X218 — Payroll Deducted and Other Group Premium Payment for Insurance Products (820) |
| <input type="checkbox"/> | 005010X221A1 — Health Care Claim Payment/Advice Response (835) |
| Acceptance | |
| <input type="checkbox"/> | Download an "accepted" 999 Functional Acknowledgement. |





| Communication | |
|--------------------------|---|
| <input type="checkbox"/> | Contact the Provider Services Call Center to confirm testing was successful. |
| <input type="checkbox"/> | Receive a letter indicating authorization to exchange production data through Colorado interChange. |
| Setup for production | |
| <input type="checkbox"/> | Change the environment indicator in Colorado interChange control segment 15 (ISA 15) to "P" in the trading partner's submission software. |

Frequently Asked Questions

I am a provider submitting through a third-party vendor. Do I need to complete the trading partner profile?

No. Only entities exchanging data directly with the Colorado Medical Assistance Program are required to complete the trading partner enrollment. The third-party vendor, an entity that submits transactions on behalf of the provider, will be required to complete the trading partner enrollment.

I am a third-party (billing service/clearinghouse) vendor who submits directly to the Colorado Medical Assistance Program through my own software. Do I need to complete the trading partner profile?

Yes. Entities exchanging data directly with the Colorado Medical Assistance Program are required to complete the trading partner enrollment.

I am a provider who wishes to receive the 835. Do I need to complete any documentation?

Yes. Providers who wish to receive the 835 are considered trading partners and are required to complete the trading partner enrollment and enroll to receive electronic remittance advice (ERAs) on the [Provider Web Portal](#).

Revised March 2023

